

Supplementary information, Figure S10

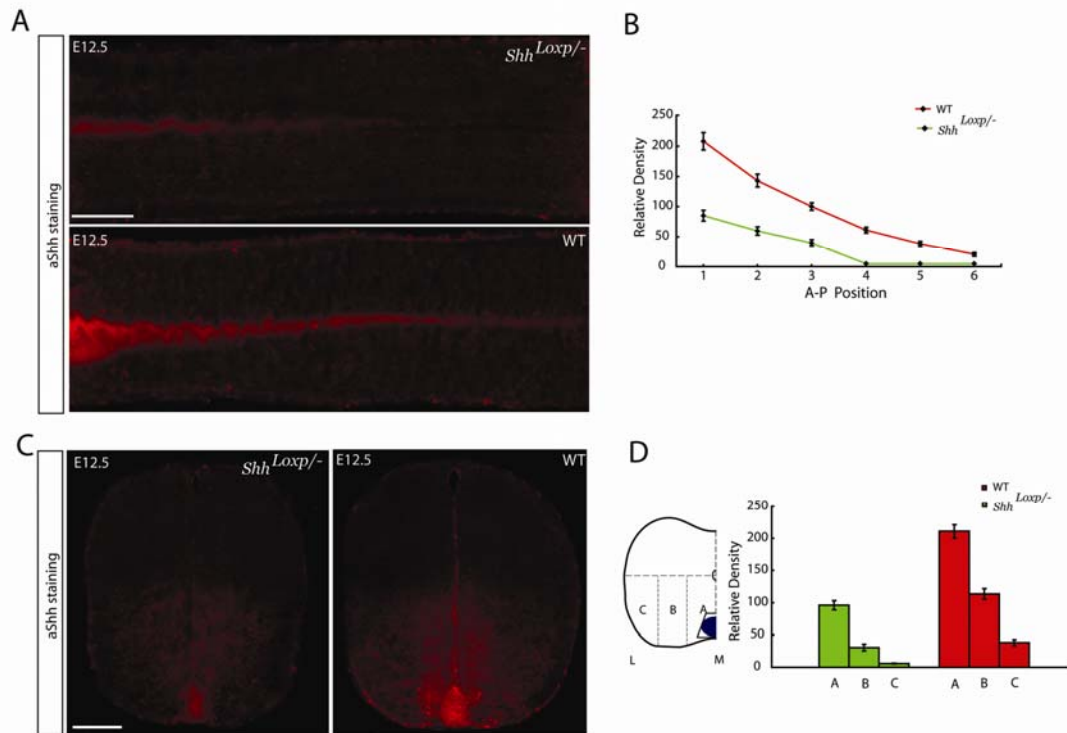


Figure S10 The graded Shh distribution is altered in E12.5 *Shh^{Loxp/-}* spinal cord. **(A)** Immunostaining for Shh showed that the Shh gradient in the A-P direction became shorter and less steep in the spinal cord of E12.5 *Shh^{Loxp/-}* mice in comparison with WT mice. Scale bar: 500 μ m. **(B)** Quantification of positive immunostaining signals for the Shh gradient in the A-P direction in the E12.5 spinal cord of *Shh^{Loxp/-}* and WT mice. **(C)** The absolute concentration of Shh expression in the M-L direction was reduced, but the graded Shh distribution in the M-L direction still present, in the spinal cord of *Shh^{Loxp/-}* mice in comparison with WT mice. Scale bar: 200 μ m. **(D)** Quantification of positive immunostaining signals for the Shh gradient in the M-L direction in the E12.5 spinal cord of *Shh^{Loxp/-}* and WT mice.