

Supplementary information, Figure S14

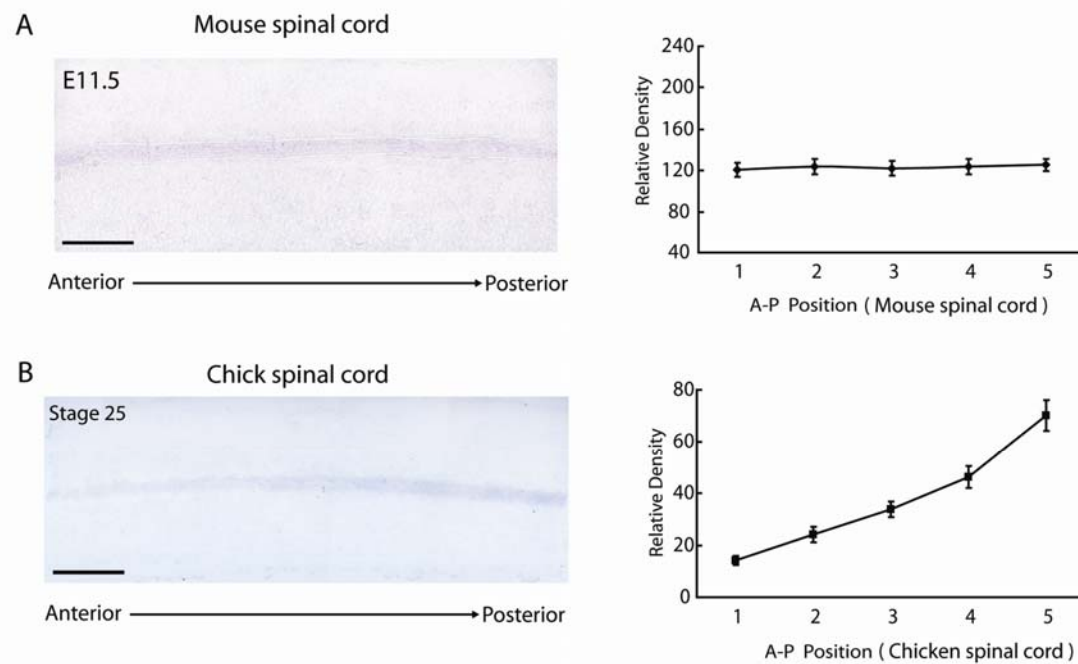


Figure S14 At stage E11.5, the *Shh* gradient is not detected in the mouse spinal cord. **(A)** At stage E11.5, *Shh* mRNA expression was consistently uniform along the A-P axis of the mouse spinal cord. Scale bar: 500 μ m. **(B)** An increasing A-P gradient of *Shh* mRNA was detected at stage 25 in embryonic chicken spinal cords. Scale bar: 500 μ m. The right panel shows quantification of the relative density along the A-P axis. Quantification was conducted to evaluate *Shh* mRNA expression along the A-P axis of E11.5 mouse caudal brainstems and spinal cords and stage 25 chick spinal cords. The relative density of positive signals was measured with Image J software (NIH). The relative density of each point was averaged from at least three different experiments, and statistical analysis was performed using the Student's *t*-test. Results are presented as the mean \pm S.E.M.