

Supplementary information, Figure S2

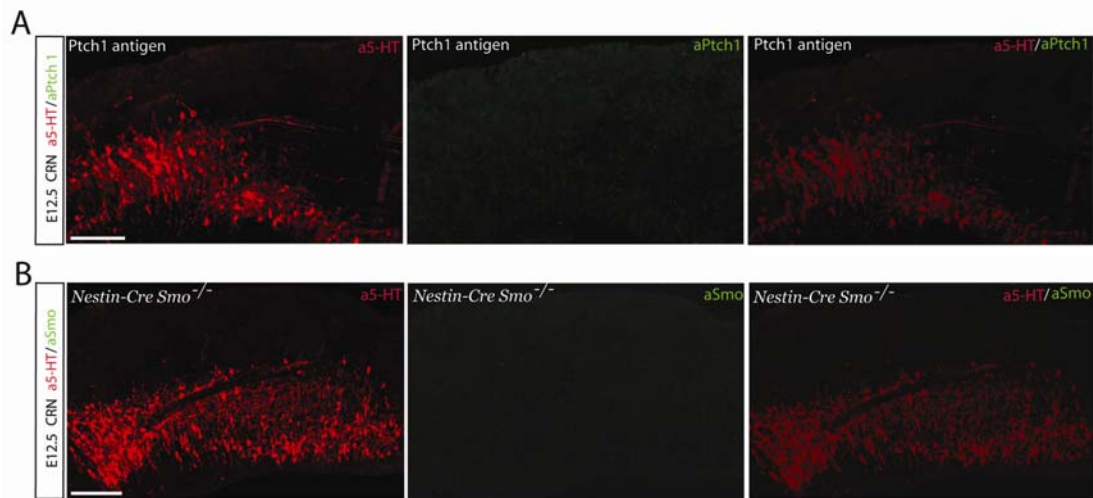


Figure S2 Specificity of Ptch1 and Smo immunostaining in serotonergic neurons of the CRN. Sagittal sections from the brainstem that contained serotonergic neurons of the CRN were cryosectioned and used for co-immunostaining for Smo and 5-HT or Ptch1 and 5-HT. **(A)** The immunoreactive signal for anti-Ptch 1 staining was eliminated by preincubation of Ptch 1 and 5-HT antibodies with purified recombinant Ptch 1 (purified antigen). **(B)** Smo immunoreactivity was not detected on tissue from a *Nestin-Cre; Smo^{-/-}* mouse. Scale bar: 100 μ m.