

Supplementary information, Figure S3

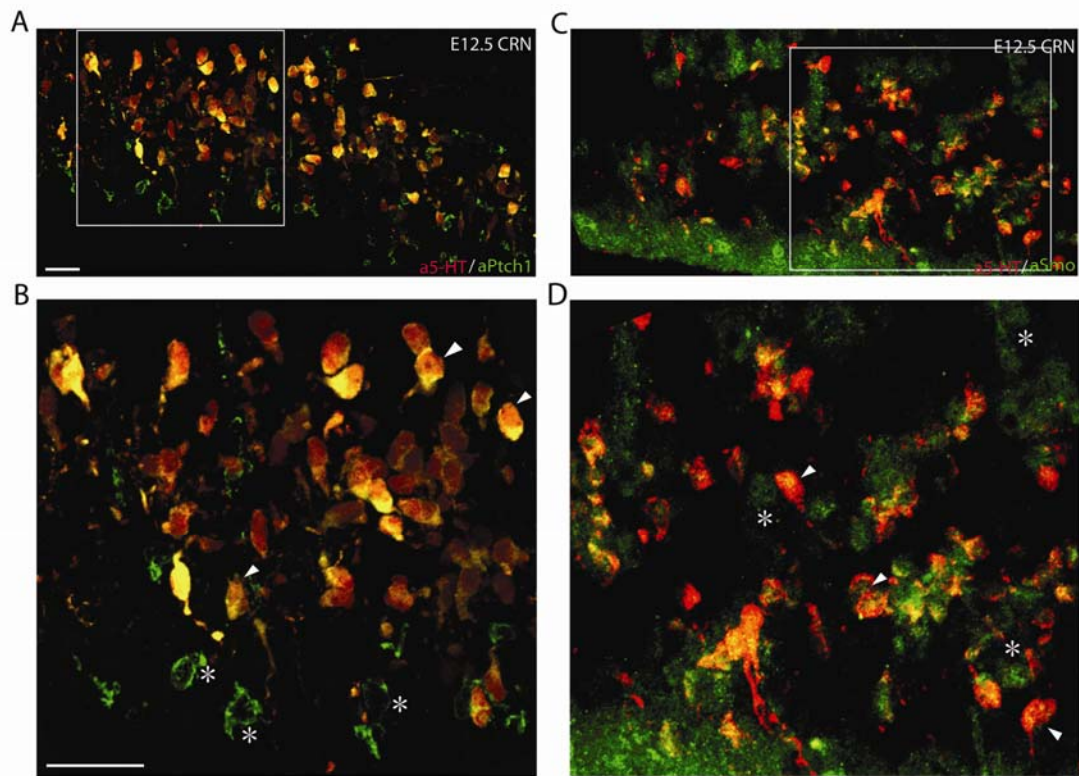


Figure S3 Ptch1 and Smo expression in E12.5 serotonergic CRN neurons is shown in high-magnification images. At stage E12.5, Ptch1 (A) and Smo (C) were expressed in the serotonergic CRN neurons. High-magnification images of selected areas are shown in insets (B, D). White arrowheads indicate CRN neurons stained with anti-5-HT and anti-Ptch 1 or anti-5-HT and anti-Smo. Asterisks mark neurons stained with only Ptch 1 or Smo. Scale bar: 100 μ m.