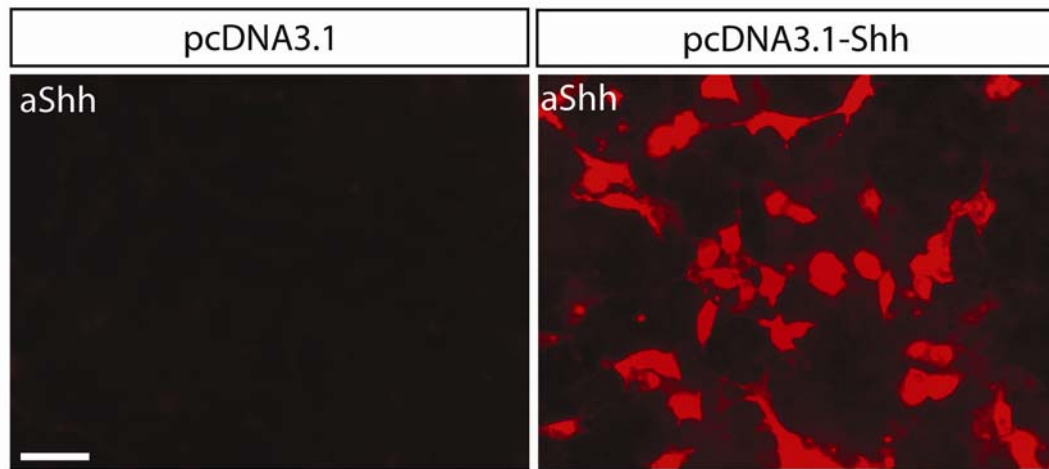


## Supplementary information, Figure S4



**Figure S4** Shh expression in COS1 cells transfected with Shh expression vector. COS1 cells were transfected with an Shh expression construct (pcDNA3.1-Shh) or an empty vector (pcDNA3.1) and cultured overnight. Immunostaining for Shh was conducted to examine the expression of Shh in transfected COS1 cells. Strong Shh expression was detected in COS1 cells transfected with pcDNA3.1-Shh. By comparison, endogenous Shh expression was not detected in COS1 cells transfected with an empty vector (pcDNA3.1). Scale bar: 20  $\mu$ m.