

Supplementary information, Figure S5

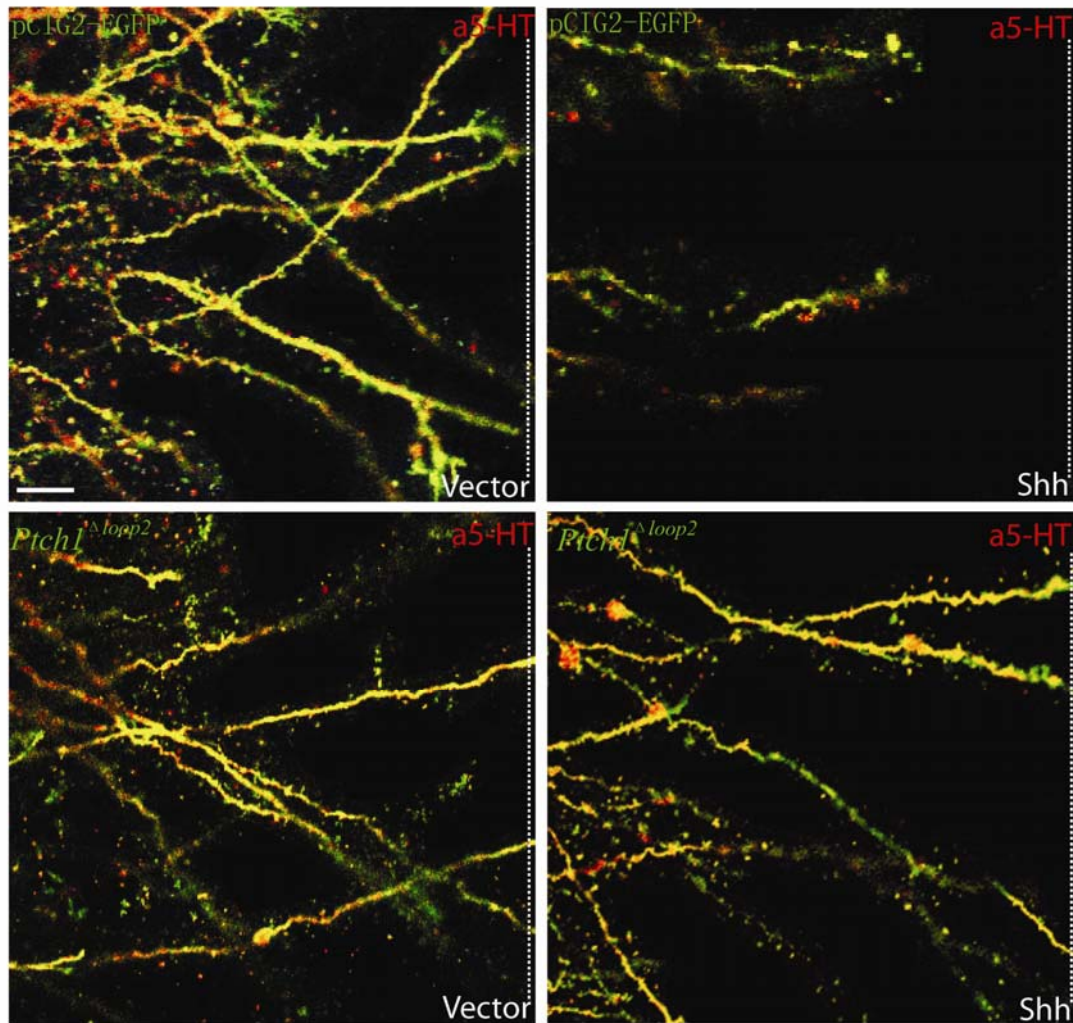


Figure S5 Co-immunostaining for EGFP and 5-HT in the cell aggregate assay is shown in high-magnification images. In the cell aggregate assay (Figure 3C), co-immunostaining for EGFP and 5-HT was conducted to show *Ptch1* ^{Δ loop2} expression in serotonergic RST axons. The EGFP- and 5-HT-immunoreactive axons in different groups are shown in high-magnification images. Dotted lines show the cell aggregates. Scale bar: 200 μ m.