

Supplementary information, Figure S8

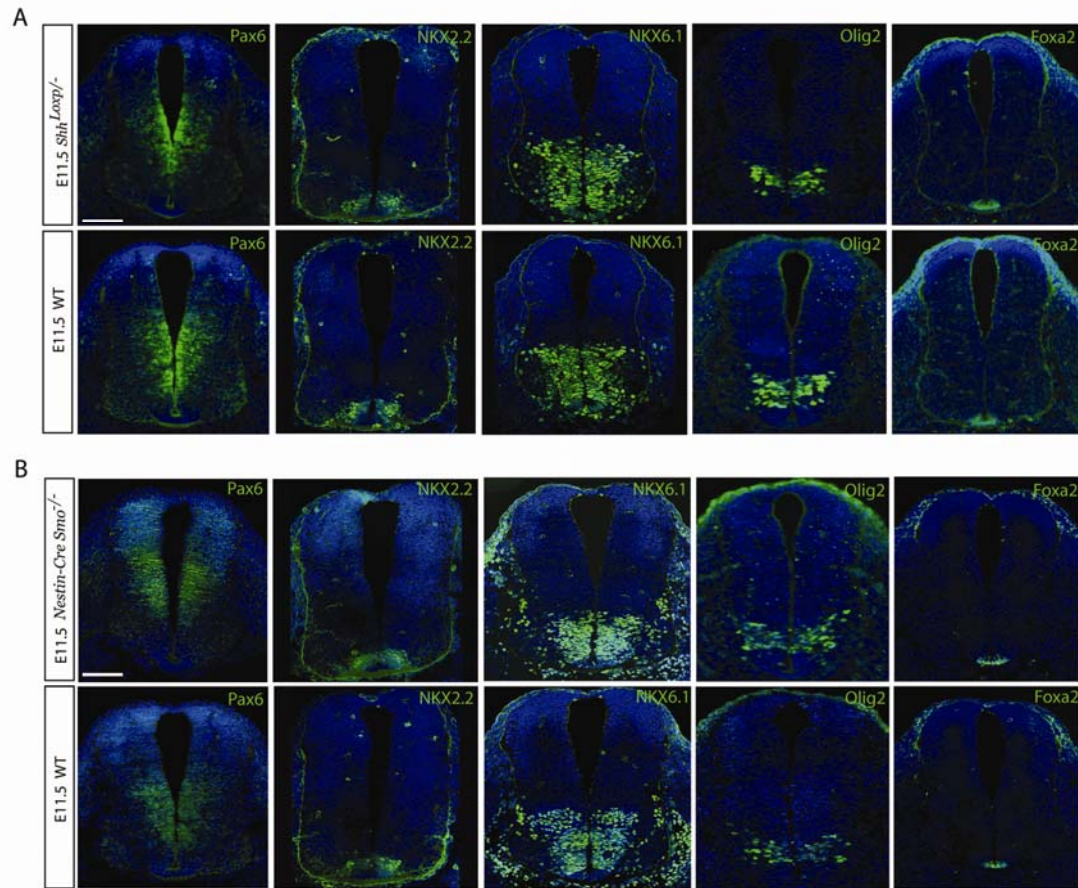


Figure S8 Patterning of the spinal cord is not affected in *Shh^{loxp/-}* hypomorphic mice or *Nestin-Cre; Smo^{-/-}* mice. **(A)** E11.5 spinal cords of *Shh^{loxp/-}* and WT mice were cut into coronal sections, and immunostaining for Pax 6, NKX2.2, NKX6.1, Olig2 and Foxa2 was conducted to analyze the patterning of the spinal cord. **(B)** E11.5 spinal cords of *Nestin-Cre; Smo^{-/-}* and WT mice were analyzed as in **A**. Abnormal patterning of the spinal cord was not detected in *Nestin-Cre; Smo^{-/-}* mice or *Shh^{loxp/-}* hypomorphic mice. Scale bars: 200 μ m.