

Supplementary information, Figure S9

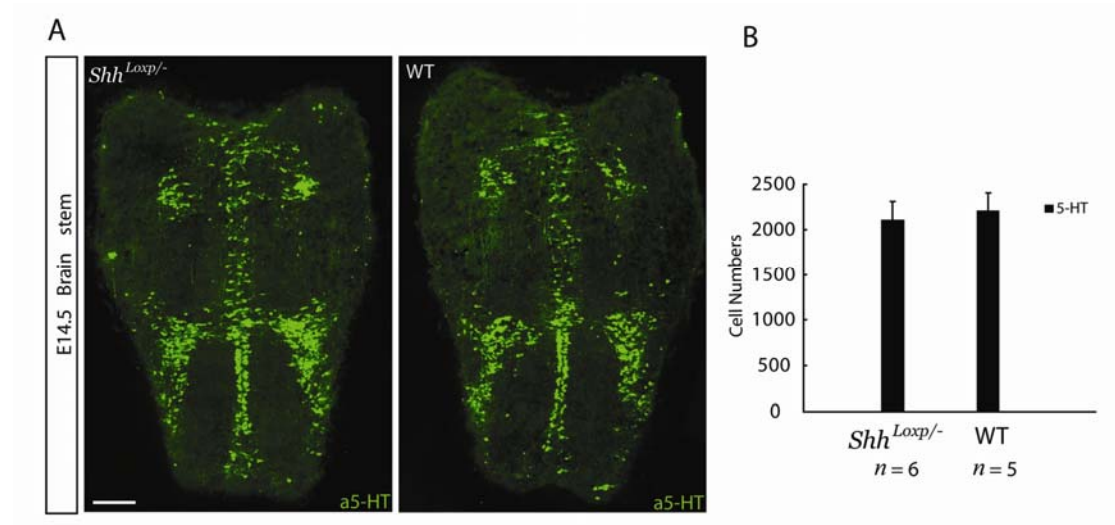


Figure S9 *Shh^{lox/-}* mice do not show a reduction of serotonergic neurons in the brainstem. **(A)** The serotonergic neurons in the E12.5 brainstem were immunostained with anti-5-HT. **(B)** The number of CRN serotonergic neurons in the brainstem of *Shh^{lox/-}* and WT mice were quantified. Data are presented as the mean \pm S.E.M. WT: 2205 ± 203 ; *Shh^{lox/-}* mice: 2098 ± 216 ; scale bar: 100 μ m.