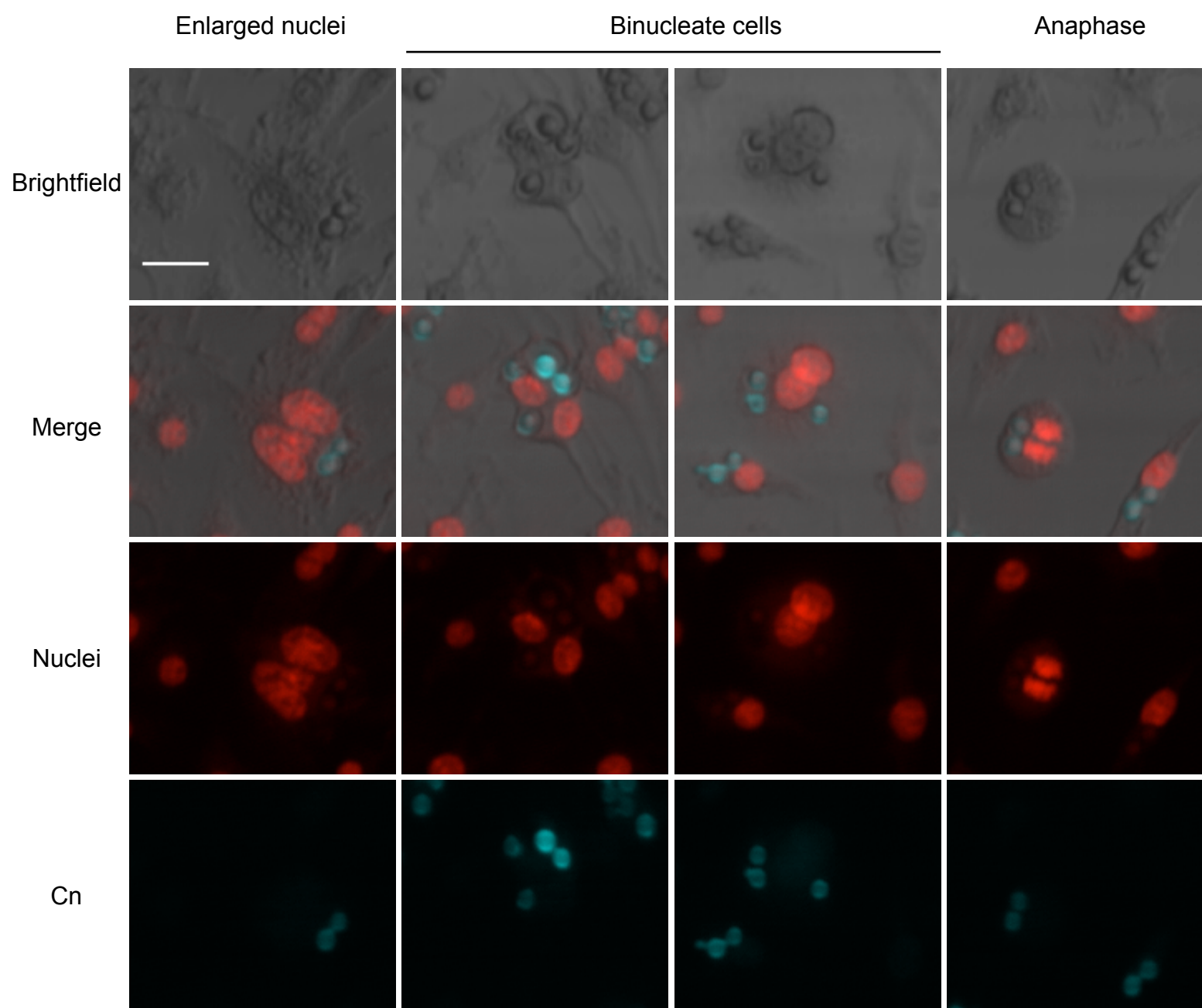


Supplemental Figure 3



Supplemental Figure 3. **Nuclear morphology of BMDM infected with Cn.**

Nuclear morphology of BMDM infected with Cn did not display significant changes from uninfected wells. Binucleate cells and nuclei enlargement were found but those events were rare and could not be quantified above the non infected wells (not shown). Mitotic figures were also observed. Experiments were repeated at least 4 times with triplicate wells for each condition. Original magnification 40x at 0.5  $\mu\text{m}$  resolution. Scale bar represents 20  $\mu\text{m}$ .