

1  
2  
3  
4  
5  
6  
7  
8  
9  
10  
11  
12  
13  
14  
15  
16  
17  
18  
19  
20  
21  
22

**Evidence of Uncultivated Bacteria in the Adult Female Bladder**

A. J. Wolfe<sup>1</sup>, E. Toh<sup>2</sup>, N. Shibata<sup>1</sup>, R. Rong<sup>3</sup>, K. Kenton<sup>1</sup>, M. P. FitzGerald<sup>1</sup>, E. R. Mueller<sup>1</sup>, P. Schreckenberger<sup>1</sup>, Q. Dong<sup>3</sup>, D. E. Nelson<sup>2</sup>, and L. Brubaker<sup>1</sup>

Corresponding Author: Linda Brubaker, MD, MS  
Loyola University Chicago, Stritch School of Medicine  
LBrubaker@lumc.edu

<sup>1</sup> Stritch School of Medicine, Loyola University Chicago, Maywood, IL  
<sup>2</sup>Indiana University, Bloomington, IN  
<sup>3</sup>University of North Texas, Denton, TX

[Supplemental Information]

23 **Supplemental Figure Legends**

24 **Supplemental Figure S1. Culture analysis of patient #7.** The  
25 transurethral catheter sample (TUC), the voided sample (Void), and the PBS-  
26 washed vaginal swab (Vag) were plated on LB or blood agar (BA) plates and  
27 incubated at 37C for 48 h under aerobic or anaerobic conditions.

28 **Results:** The TUC sample was culture-negative. Note that it was PCR-negative at  
29 30 cycles (data not shown). In contrast, the voided sample (Void) and the vaginal  
30 swab (Vag) were both culture-positive and PCR-positive at 30 cycles (data not  
31 shown).

32 **Conclusion:** The voided sample contains cultivated bacteria that the TUC  
33 sample does not.

34

35 **Supplemental Figure S2. Light microscopy of samples from patients**  
36 **#1 (A-B) #3 (C-E) and #6 (F-G).** (A) Patient #1, Voided; (B) Patient #1, TUC;  
37 (C) Patient #3, Voided, (D & E), Patient #3, TUC; (F) Patient #6, Voided; (G)  
38 Patient #6, vaginal swab.

39 **Results:** Bacteria were observed in a culture-negative, PCR-positive TUC sample  
40 (Patient #1). Bacteria were not observed in a culture-negative, PCR-positive TUC  
41 sample (Patient #6). Bacteria were not observed in a culture-negative, PCR-  
42 negative TUC sample (Patient #3, data not shown).

43 In contrast, bacteria were abundant in the voided samples of all three patients  
44 and the vaginal swab of Patient #6. All voided samples and vaginal swabs were  
45 culture-positive and PCR-positive at 30 cycles.

46 **Conclusions:** Bacteria can be observed in a culture-negative, PCR-positive TUC  
47 sample. Voided samples of some patients contain cultivated bacteria that are not  
48 present in the parallel TUC sample.

49

50 **Supplemental Figure S3. Gram stain of TUC sample from culture-**  
51 **negative patient H1254.**

52 **Results:** Obvious Gram-positive (A & B) and Gram-negative (C) bacteria in a  
53 TUC sample that was culture-negative, but PCR-positive.

54 **Conclusion:** Culture-negative samples can contain bacteria.

Figure S1

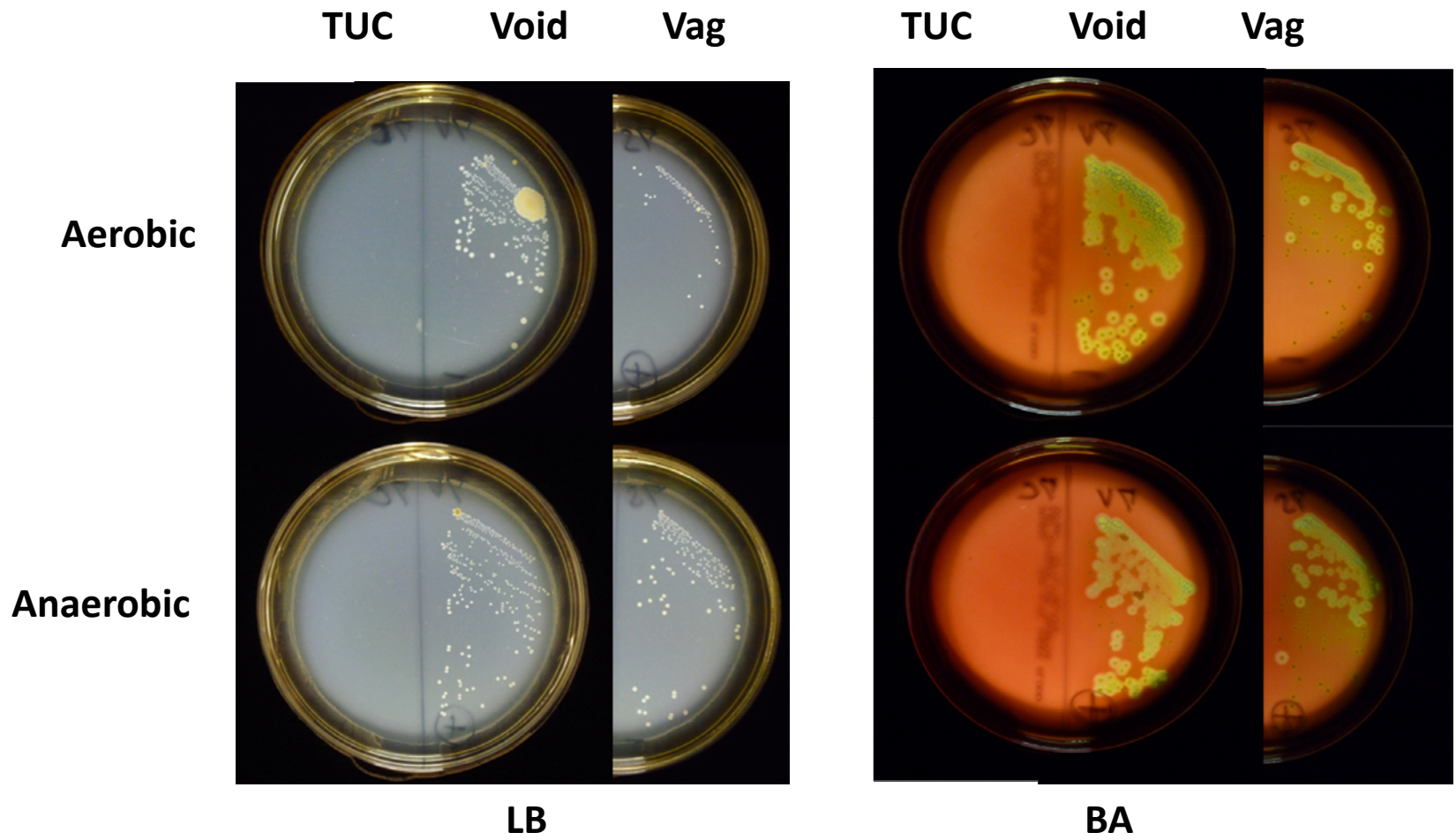


Figure S2

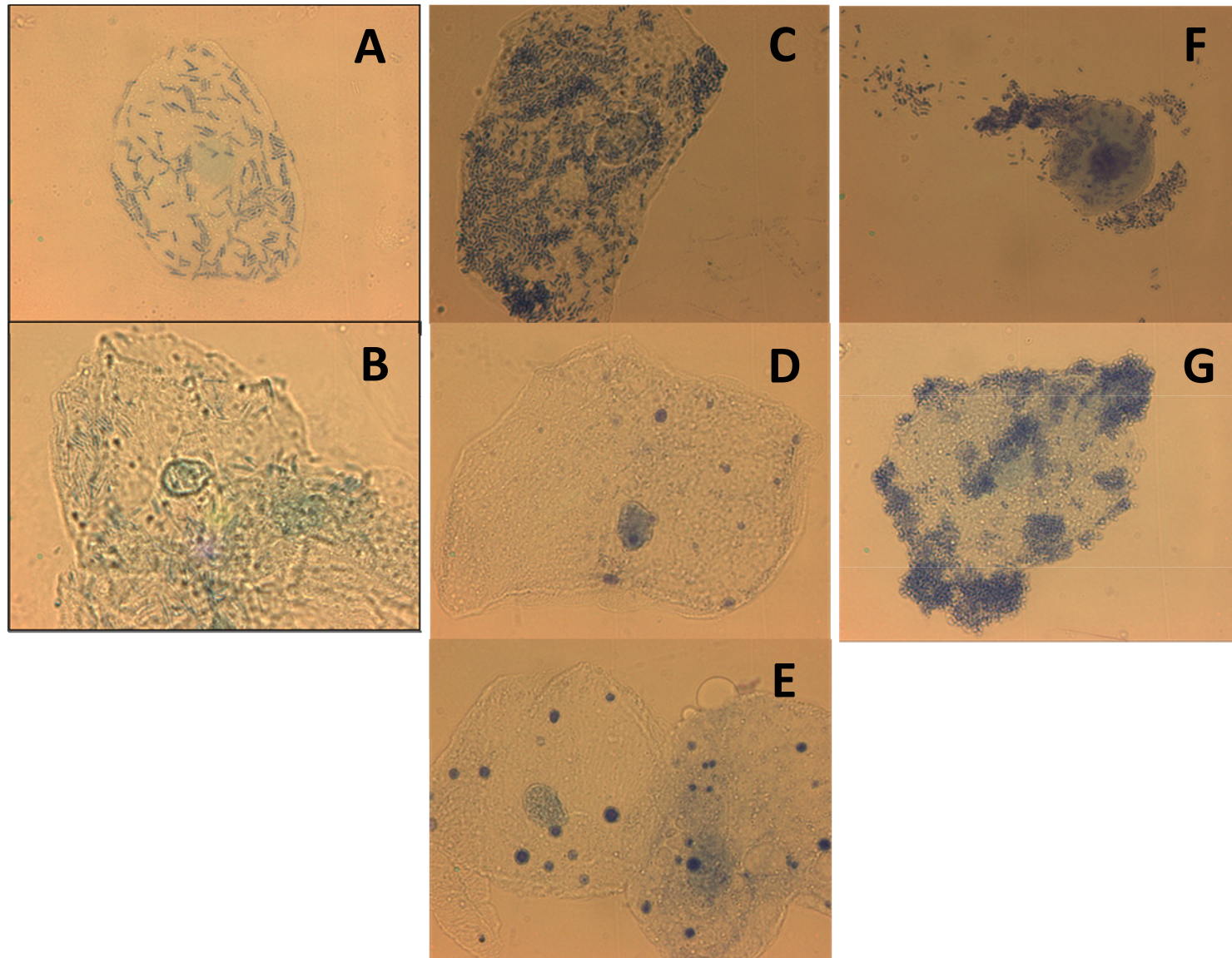


Figure S3

