

Figure S1

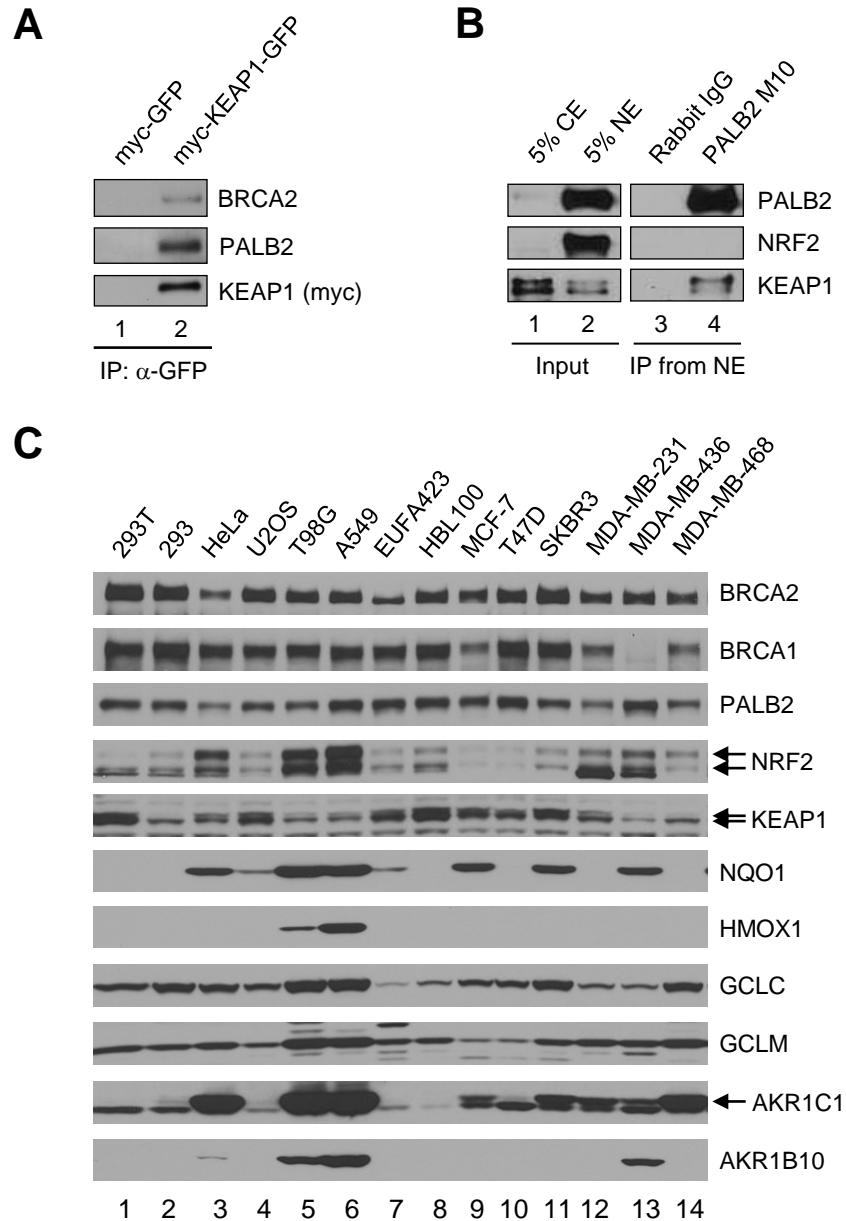


Figure S1. (A) Ectopically expressed KEAP1 interacts with endogenous PALB2 and BRCA2. myc-GFP-tagged KEAP1 was transiently expressed in 293T cells and IPed using an anti-GFP antibody. Proteins in the precipitates were analyzed by Western blotting using anti-BRCA2, anti-PALB2 and anti-myc antibodies, respectively. (B) PALB2 and KEAP1 form complex in the nucleus. U2OS cells were fractionated into cytoplasmic extract (CE) and nucleus extract (NE). NE was precipitated with either control or PALB2 antibodies, and the amount of PALB2, NRF2 and KEAP1 was analyzed by Western blotting. (C) Expression levels of relevant genes in a series of cancer cells as well as a *BRCA2*-deficient FA fibroblast cell line EUFA423 which express truncated BRCA2 proteins. MDA-MB-436 is a *BRCA1*-mutant breast cancer cell line. Total cell lysates were analyzed by Western blotting. NQO1 and HMOX1 antibodies were purchased from Santa Cruz. GCLC, GCLM, AKR1C and AKR1B10 antibodies were purchased from GeneTex.