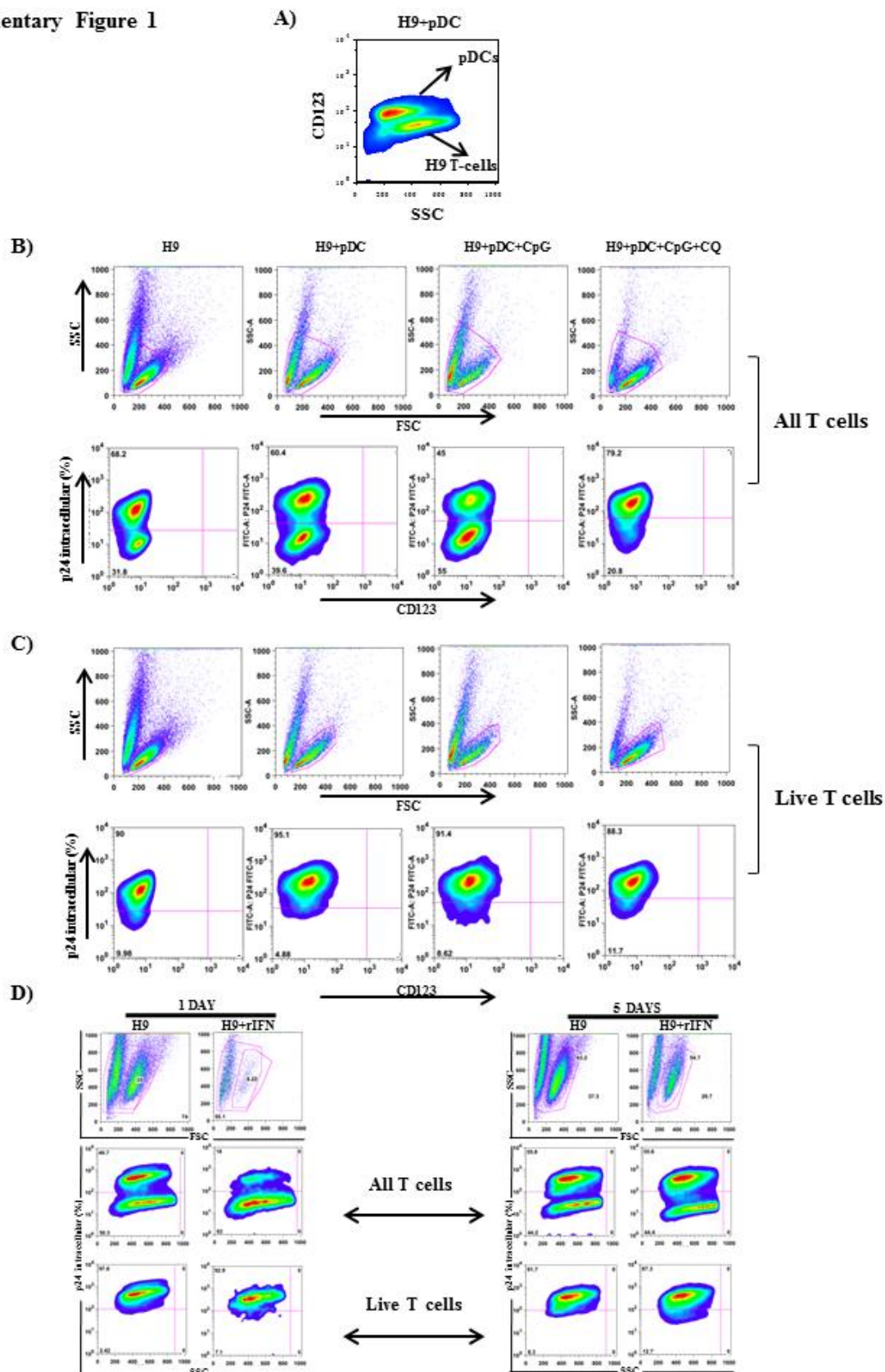


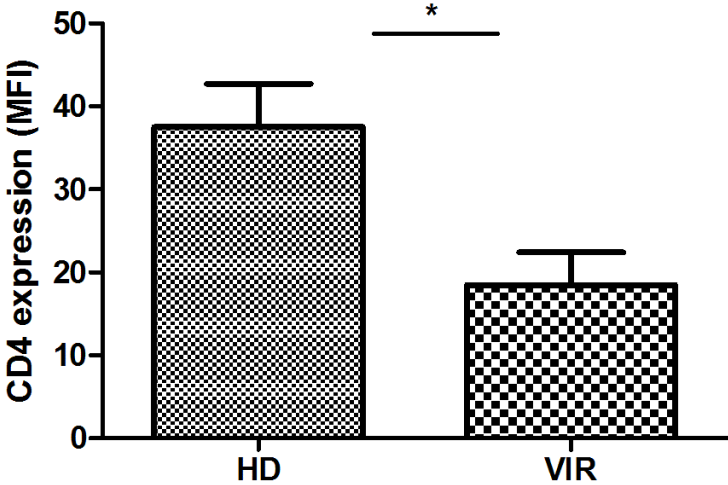
Supplementary Figure 1



### **Supplementary Figure 1. pDCs-mediated p24<sup>+</sup> T cell decreases**

**A)** Cells were discriminated using CD123-SSC parameters. H9 T cells were defined as CD123 negative T cells. **B)** In the suppression experiments. All T cells from the coculture were gated and a reduction of p24<sup>+</sup> T cells was observed in presence of unstimulated and CpG-stimulated pDCs, the CQ abolish completely this effect. **C)** p24<sup>+</sup> T cells were analyzed in cells with a live morphology, based on FSC-SSC appearance. No differences were observed in all the culture conditions. **D)** Recombinant IFN- $\alpha$  implication on p24 reduction. H9 T cells were cultured in presence or not of recombinant IFN- $\alpha$  (10 $\mu$ g/ml), and p24<sup>+</sup> T cells were analyzed after 1 and 5 days of culture. p24 T cells percentages were analyzed in all cells from the culture and compared with T cells with a live morphology.

# Supplementary Figure 2



**Supplementary Figure 2. CD4 expression on pDCs measured by FACS.**

CD4 cell surface expression on pDCs from 7 HD and 7 VIR subjects was quantified by FACS and expressed as mean fluorescence intensity (MFI). Results are presented as mean (standard error of the mean), *p* values were determined using U Mann-Whitney test.