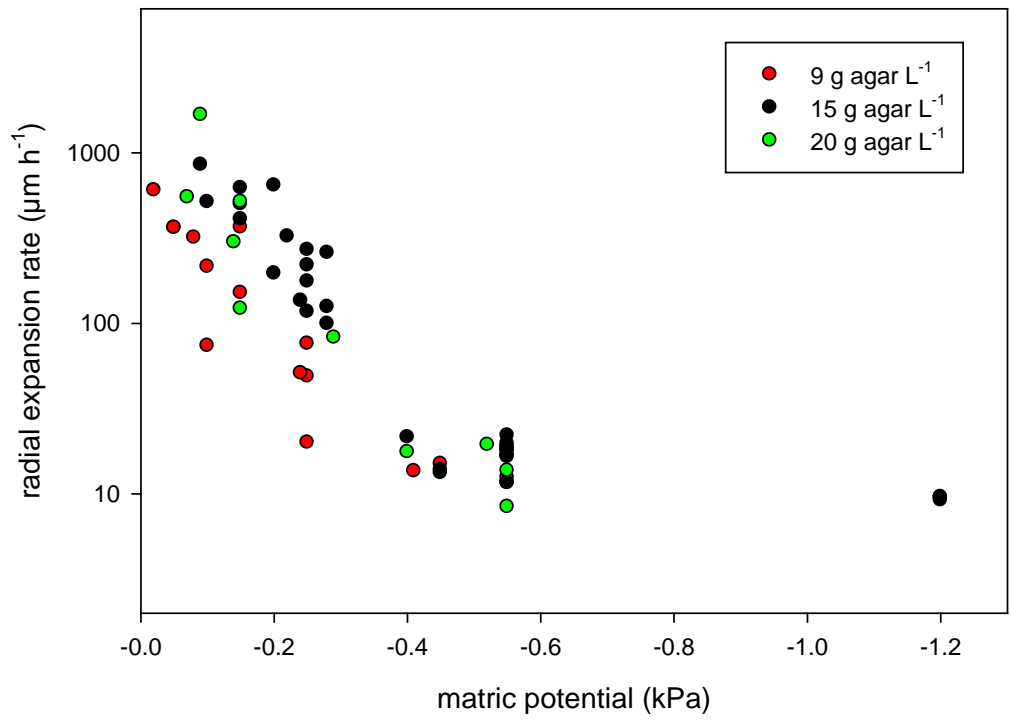


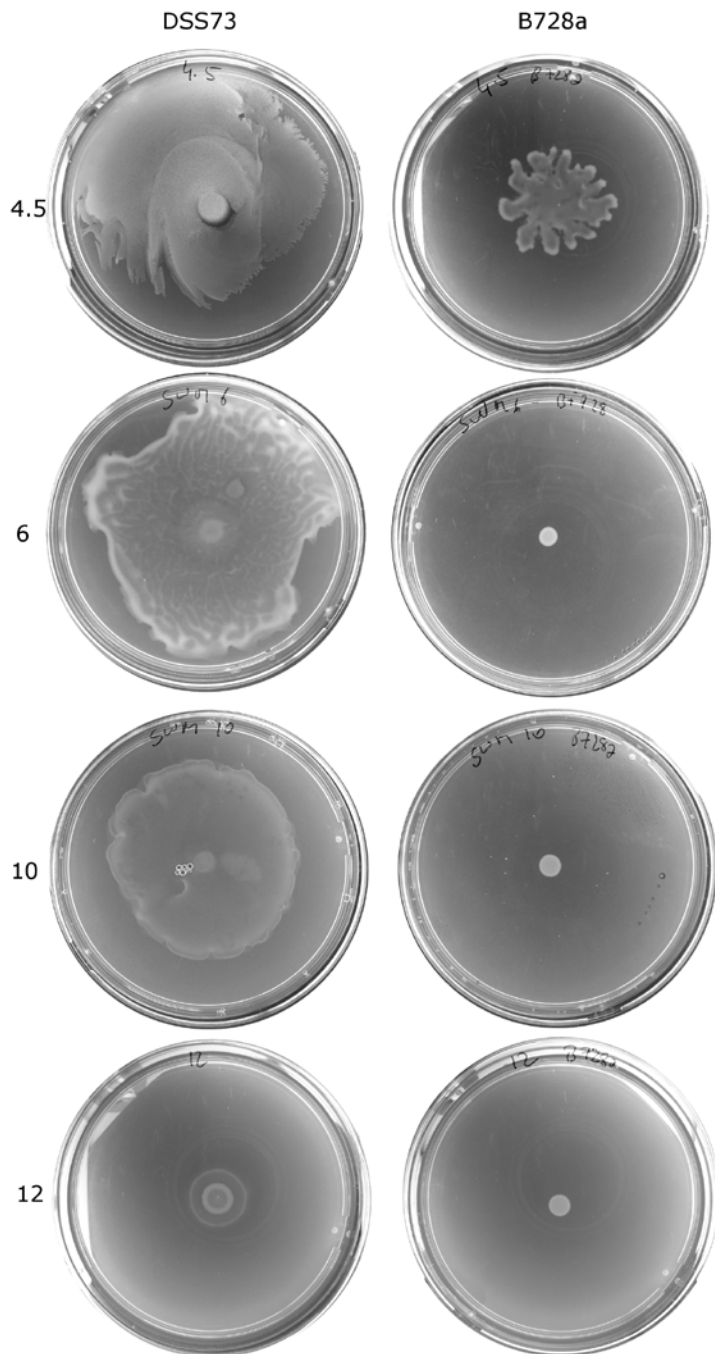
Supplementary Figures :



Supplementary Figure 1. Photograph of the agar-slab PSM system. Matric potential is manipulated by changing the relative elevation of the slab in its container with respect to the air / liquid interface in the medium reservoir.



Supplementary Figure 2. Comparison of DSS73 expansion rate on slabs with different initial agar concentrations.



Supplementary Figure 3.

Spreading of DSS73 (left column) and B728a (right column) after 17h of incubation on swarming plates (9 cm Petri dishes) containing SWM medium solidified with 4.5 to 12 g agar per L. Note that B728a developed swarming on the plates solidified with 6 and 8 g per L upon extended incubation. The contrast of the images has been improved digitally.