

Supplemental Fig. S1

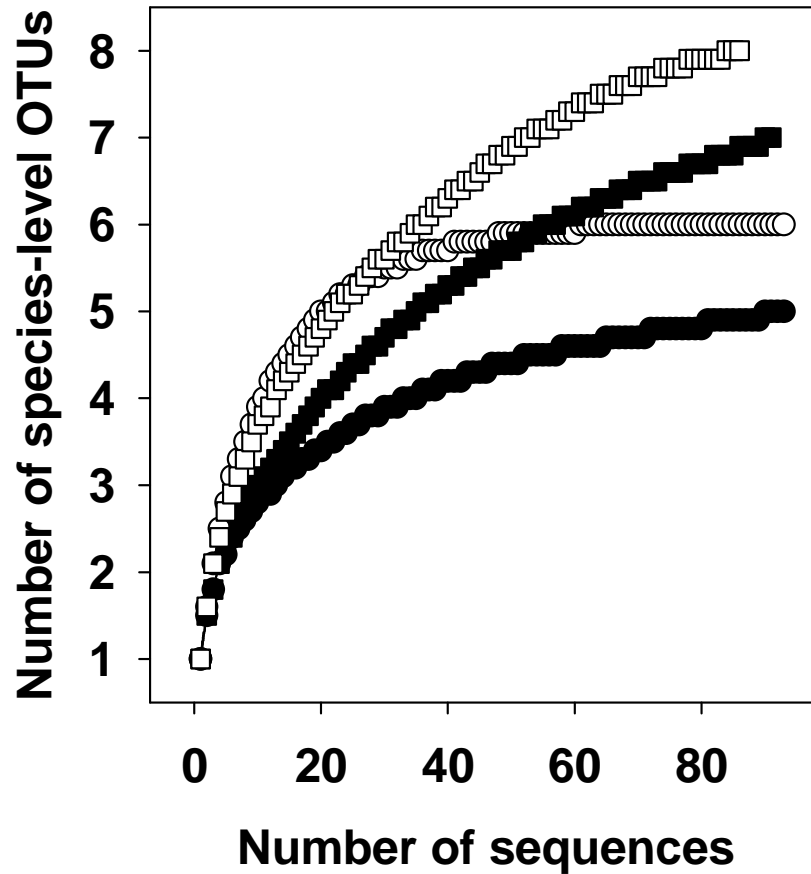


FIG. S1. Rarefaction curves of species-level *mcrA* or *mrtA* OTUs obtained from gut contents of *E. eugeniae* and Substrate 1. Symbols: filled circles, *mcrA* transcript sequences from gut contents; empty circles, *mcrA* or *mrtA* sequences from gut contents; filled squares, *mcrA* transcript sequences from Substrate 1; empty squares, *mcrA* or *mrtA* sequences from Substrate 1.