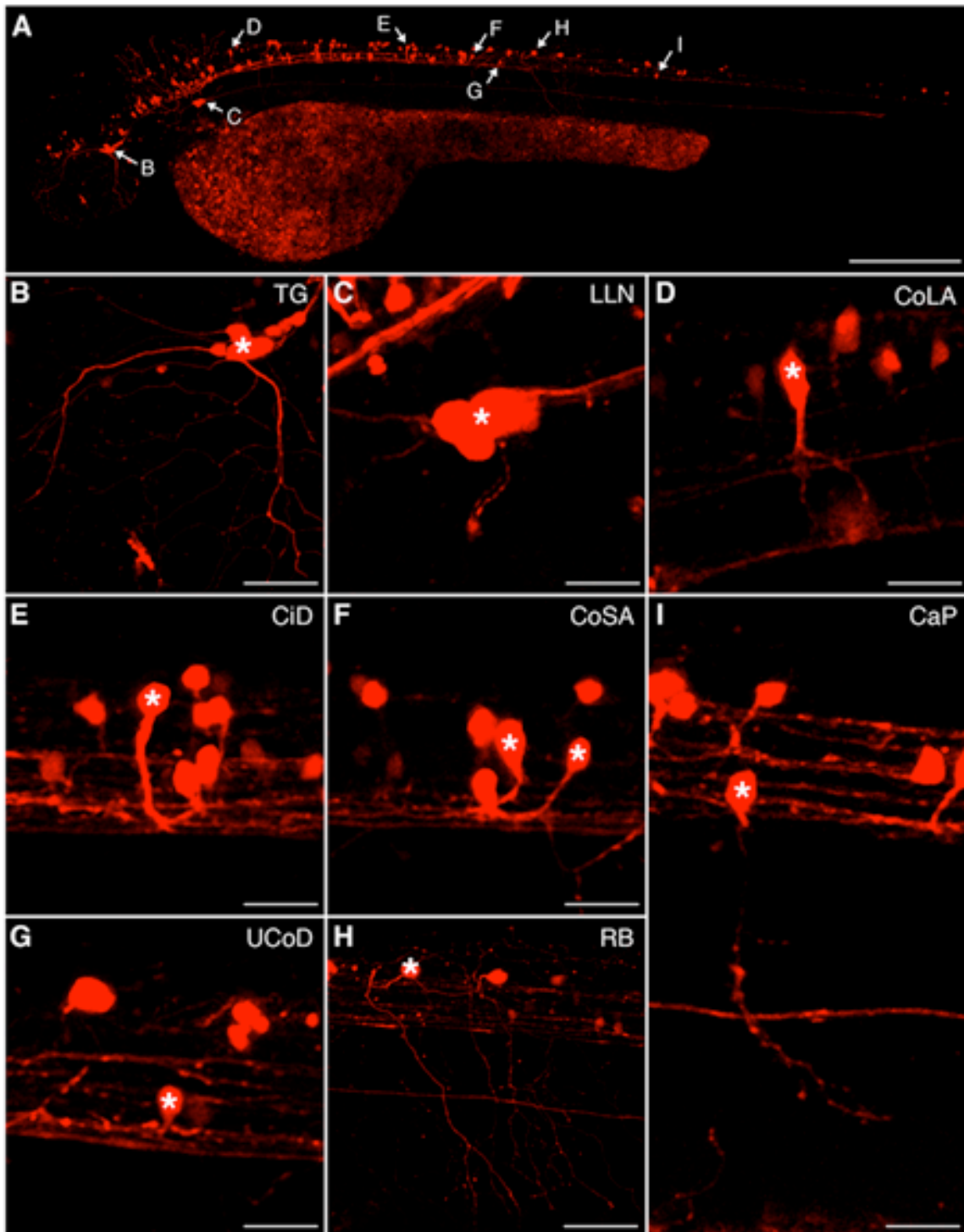


Wright&Ribera/Supplemental Figure Legends

Supplemental Figure 1: The *scn8aa* promoter drives expression of mCherry in specific zebrafish neurons in transient transgenics. (A) 48 hpf embryos injected with the *scn8aa*:mCherry construct at the one-cell stage express mCherry in many different types of neurons, including (B) trigeminal neurons (TG), (C) lateral line neurons (LLN), (D) commissural longitudinal ascending interneurons (CoLA), (E) circumferential descending interneurons (CiD), (F) commissural secondary ascending interneurons (CoSA), (G) unipolar commissural descending interneurons (UCoD), (H) Rohon-Beard cells (RB), and (I) caudal primary motor neurons (CaP). Scale bar: 100 μ m, A; 50 μ m, B; 25 μ m, C, D, E, F, G, I; 60, μ m H.

Supplemental Figure 2: BDNF injection does not alter touch sensitivity. (A) BDNF, NGF, or NT-3 injection at 16 hpf does not alter the touch response of *nav1.6a* morphants at 48 hpf. * $p < 0.001$ versus wildtype; Kruskal-Wallis test; sample size ranged between 23 and 30 embryos. (b) Wildtype embryos injected with a function-blocking anti-BDNF antibody at 48 hpf do not display a reduced touch response at 60 hpf. * $p < 0.001$ versus 1.6mo plus Buffer; Kruskal-Wallis test; sample size ranged between 14 and 20 embryos.

Supplementary Figure 1



Supplementary Figure 2

