

Table S1. Oligonucleotide primers used for RT-PCR.

Protein /gene	Accession #	Forward Primer (5'→3')	Reverse Primer (5'→3')	Prod, bp	Annl °C
β-actin / <i>Actb</i>	NM_007393	caccctgtgctgctcacc	gcacgattccctctcag	328	58
NTPDase2 / <i>Entptd2</i>	NM_009849	agtgaggatgccacagag	gagagcaaccaggagctga	299	63
† PLCβ2 / <i>Plcb2</i>	NM_177568	Pr #1 ctcgcttgggaagttgc	Pr #2 gcattgactgtcatcggt	226	58
		Pr #3 gagcaaatcgccaagatgat	Pr #4 ccttgctgtggtgacctg	163	60
SNAP25 / <i>Snap25</i>	NM_011428	ggcaataatcaggatggagtag	agatttaaccactcccagca	310	58
GAD1 / <i>Gad1</i>	NM_008077	agatagccctgagcgacgag	atggccgatgattctggttc	240	59
† GAD2 / <i>Gad2</i>	NM_008078	Pr #1 aatggtgtttgatggaagc	Pr #2 agggtttgagatgacctgc	217	59
		Pr #3 cattcctgtcctgcctctc	Pr #4T gtgcatcctttgtccatgt	271	59
GABA-B1 / <i>Gabbr1</i>	NM_019439	gaatggcagtctgaagcaca	tcgactcccacacagctaa	273	59
GABA-A α1 / <i>Gabra1</i>	NM_010250	ccaagtctcctctggctca	cggttctatggtcgacttt	261	59
GABA-A α2 / <i>Gabra2</i>	NM_008066	ttgggacggaagagtgtag	catcctgtcgattttgctga	232	59
GABA-A α3 / <i>Gabra3</i>	NM_008067	tctccatgaccacctga	cctggccagattgatagga	281	59
GABA-A α4 / <i>Gabra4</i>	NM_010251	gaagtccagctgctcctgt	tgctgaatggattggactg	229	59
GABA-A α5 / <i>Gabra5</i>	NM_176942	gccctggaagcagctaaaat	cgggacattttgctgatctt	227	59
GABA-A α6 / <i>Gabra6</i>	NM_008068	ctgaaaggcaggcacaact	taagagcaatgggggagaga	221	59
GABA-A β1 / <i>Gabrb1</i>	NM_008069	catgggctgtttgtgttg	acgagtacatgggtgccttg	260	59
† GABA-A β2 / <i>Gabrb2</i>	NM_008070	Pr #1 tatggccctctggaatagc	Pr #2 cccattactgctcggatgt	204	59
		Pr #3 acacaccacagagcatcgtc	Pr #4 caaatttctggagctggtacg	283	59
GABA-A β3 / <i>Gabrb3</i>	NM_008071	gaagaagcttgcggagaaga	tggcattcacatcggttaga	326	59
GABA-A γ1 / <i>Gabrg1</i>	NM_010252	aggcaggaagctgaaaaca	gcaaaagctgtgggaaaaa	255	59
GABA-A γ2 / <i>Gabrg2</i>	NM_177408	atcaatggaagcgcagtct	taggagacctgggagagaga	334	59
GABA-A γ3 / <i>Gabrg3</i>	NM_008074	gccaaccatcaggaagaaaa	agcagcagaagaagctctgg	227	59
† GABA-A δ / <i>Gabrd</i>	NM_008072	Pr #1 atgcattgcccacttcaa	Pr #2 atgggttgagtctggaacg	275	59
		Pr #3 ccaaaatgggacagagagga	Pr #4 atttcagtctgggaccaaag	321	59
† GABA-A π / <i>Gabrp</i>	NM_146017	Pr #1 cctaccaacaccaactgct	Pr #2 acttgcgctggcttcatt	287	59
		Pr #3 cgactgttctgaacgatgga	Pr #4 cagagccatgctgatgaaaa	312	59
GABA-A ε / <i>Gabre</i>	NM_017369	tctcacggcttggacttct	tccagggacactgaggctt	331	59
GABA-A θ / <i>Gabrq</i>	NM_020488	accgctaccaagaagtgtg	ggcagatcactcaggcttc	250	59
GABA-A ρ1 / <i>Gabrr1</i>	NM_008075	tgctgtagagtcccctta	caggtcgtcaccttccat	299	59
GABA-A ρ2 / <i>Gabrr2</i>	NM_008076	cagagtctactgggcatca	ctggcagaatgtggcttct	323	59
GABA-A ρ3 / <i>Gabrr3</i>	BC151105	caactcaacaggaggggaaa	ctcccagggttctctttt	205	59

† Two primer pairs were used for these genes. Primers 1,2 were used for end-point RT-PCR. Primers 3,4 were used only on single cell amplified RNA to improve yield.

Conditions for PCR were 95°C for 5 min, followed by 40 cycles (30 sec each at 94°C, annealing temperature, and 72°C).

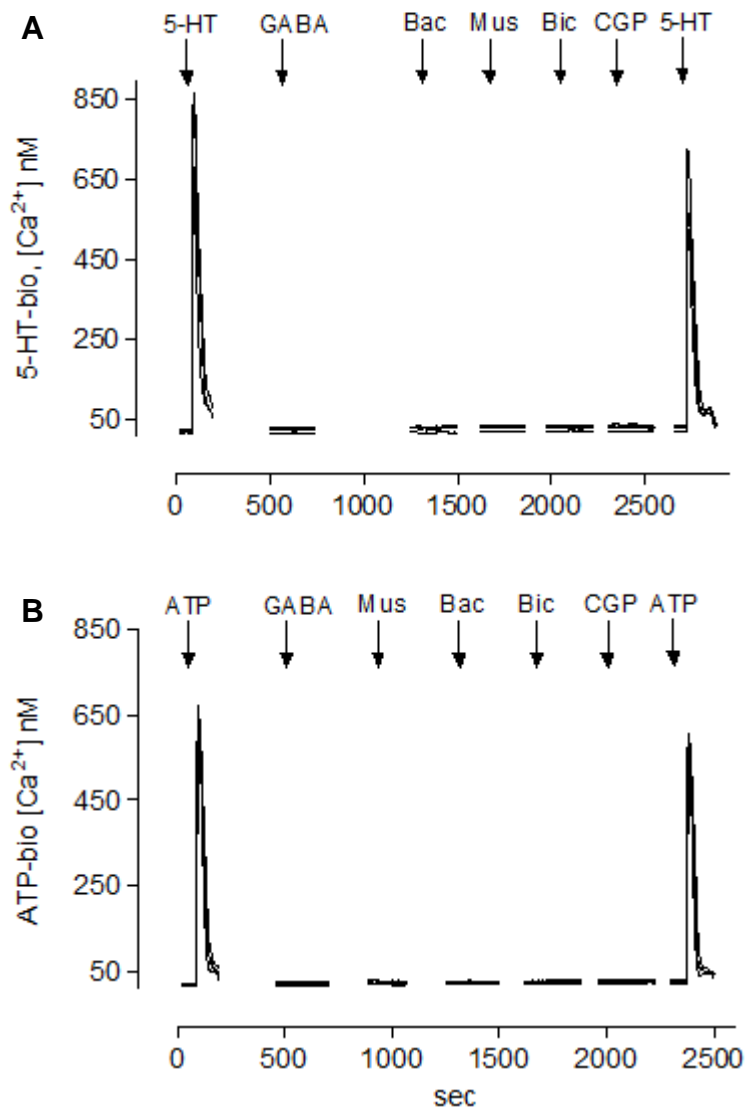


Figure S1

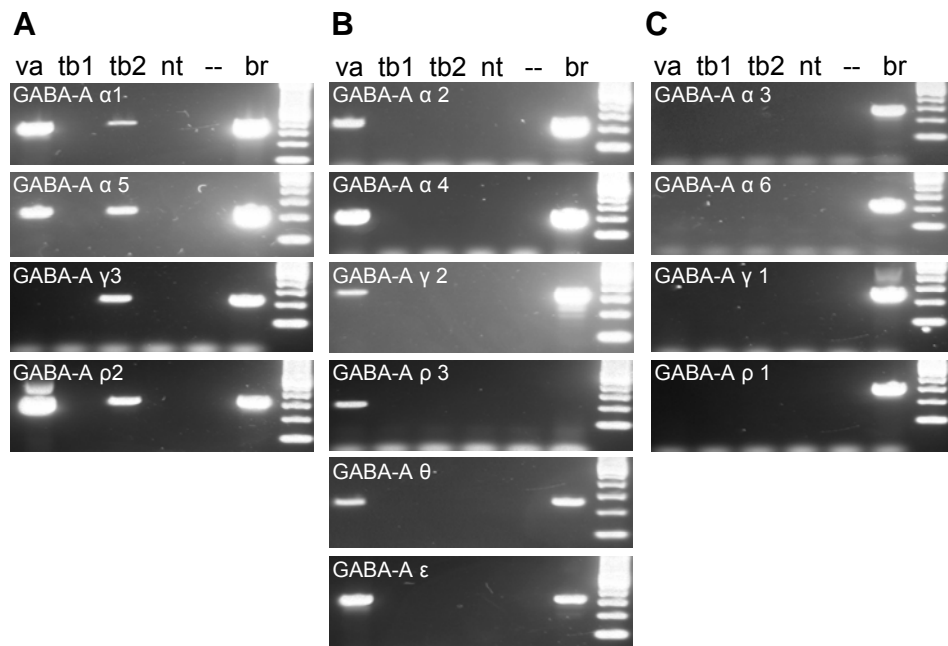


Figure S2

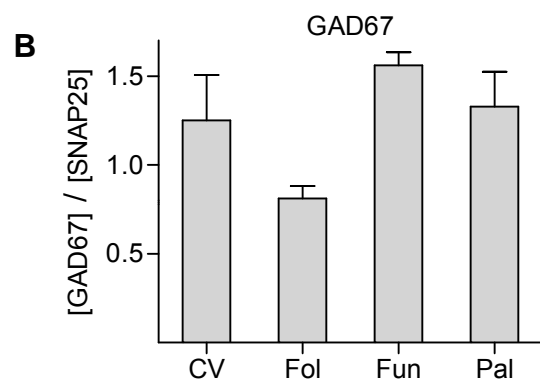
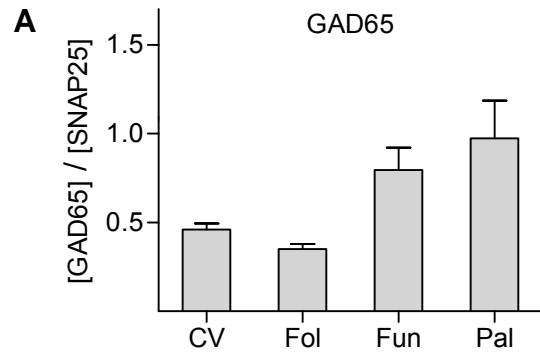


Figure S3

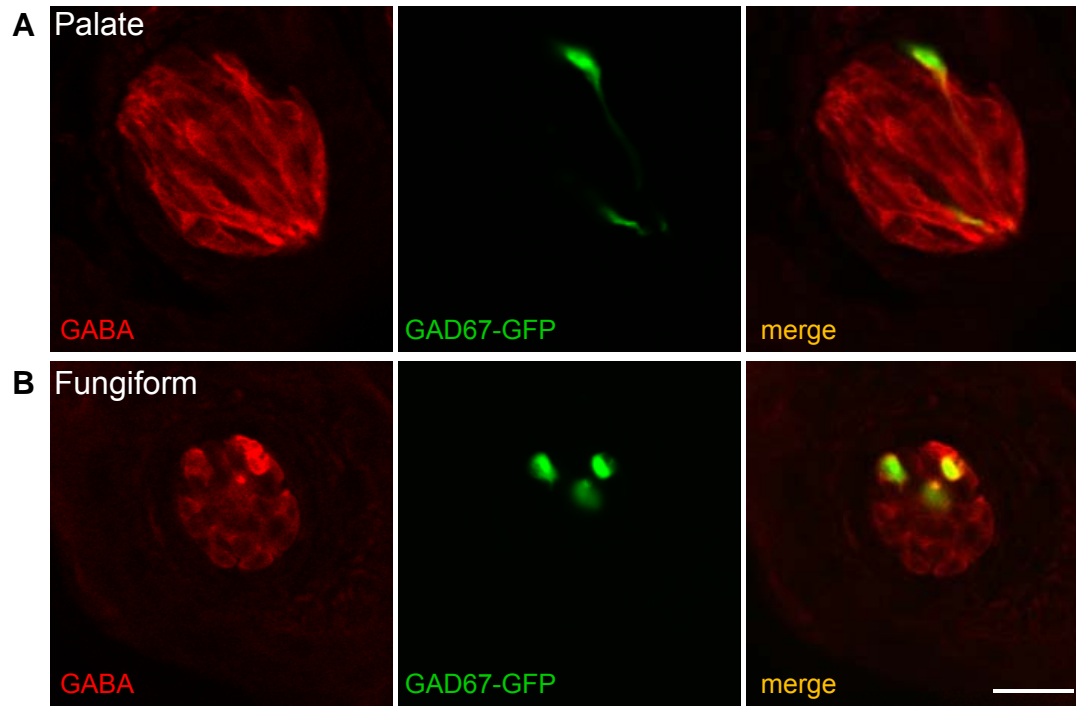


Figure S4