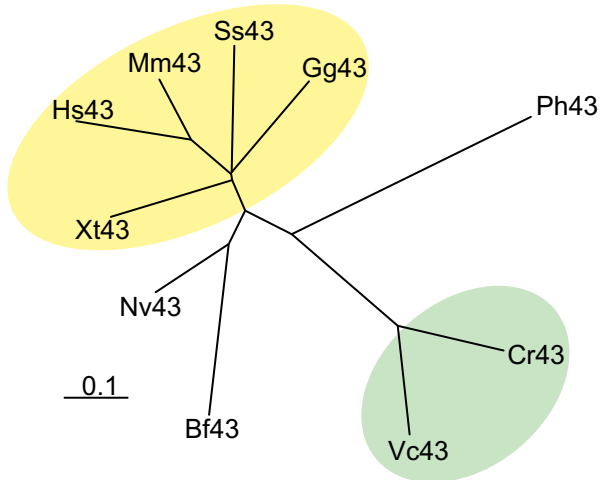
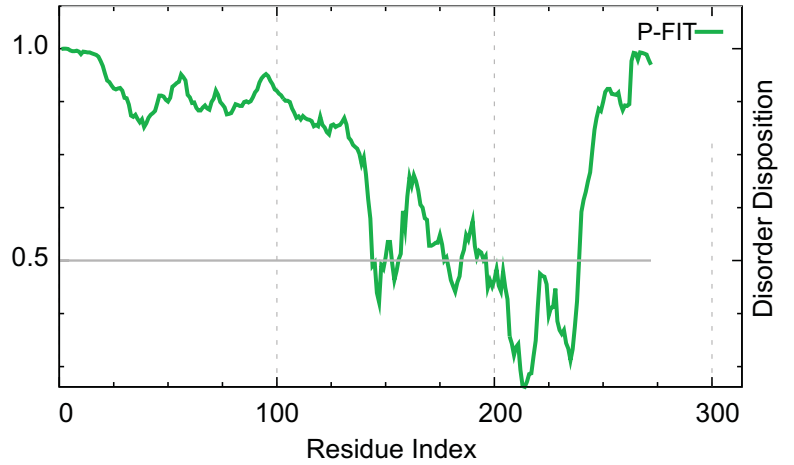


A.**B.****C.**

Cr43	MDDDAPKAAPKAGRRAARTANTWGDSDSAAPEEPQKGGFGLD SG --- FGGGGGS PRGNAFGAEDSAPPKH	66
Vc43	DDDGRRAPKAGRRAARNANSWGDSTSPPEVHKGGFGLDVG --- FGEGLSTAHPSQQGGCNDSDASR	66
Gg43	MEAE-RERAEG --- PRRPGVPRMGRRARQDVFSGESLS ---	34
Ss43	MDDN-LQLGDS --- GVVKNVAKLGRRARLAAEQTSLSLEES --- RH	38
Hs43	MEDL-LDLDEELRYSLATSRAKMGRRAQQESAQAENHLN ---	38
Mm43	MDDL-LDLGEERRRSSATSAGAKMGRRAHQESTQAENYLN ---	38
Xt43	MEDV-LDLGEA --- PSRRSGVKMGRRARASQENQQE ---	32
Bf43	MDGEELDWTTE --- NKPREVRTGRRARAAFAFTLEDSAGGIDDDDIGNDIGGGSSVRDIHASWIMPHSF	66
Ph43	MDFKLKRKSSS --- KRFMKGGLSFFLSPRDSS ---	29
* :		
Cr43	VASTNFAPSGDDEPAPAPSRQRTGDASGDRPS-RGGAPPSRPPPAEILGEDSKKFVGVSRRKQEQQLARGD	135
Vc43	PGPIPPPPS --- DEDACVPSRGRTEVSGERLSGORTNAPS KPAPTELLGEDSKKFVGLSRRKQEQQLARGD	134
Gg43	-RKNSSSASTGEEPPPKPPR-RGGWAVDPVLAPTKSGKK --- HAAEVED --- HRLRQOSQE ---	88
Ss43	VRKSSSSTSMGEVPPPKPAR-RGGWAEETSGS-AKSGRRPA --- VVEDVED --- RRLRPOTPO ---	94
Hs43	-GKNSSLTLTGETSSAKLPRCROGGWAGDSVKA-SNGTOT --- GKQQLDLNACYHKTHHRNLGL ---	97
Mm43	-SKNSSLTQTGEAPPPKPPR-RGGWADDSMKM-AKLGKK --- VSEEMED --- HRLRQONL ---	90
Xt43	-TADARNQPGREGPPKPLR --- QGGWADDSGP-SKSTKR --- MTEDEVED --- SRLKQOSLD ---	84
Bf43	IGSYDNARRDQSPGPPRPSR-RGGWADDTGKE --- KK --- SARLRSDSPPR ---	111
Ph43	--KESNVGASGSHTDLMFSRKKISEWNIENVKP --- DNKSDTIEDN ---	69
* :		
Cr43	DEVSRKNLKYETLITAGVDGIMEIPELEEEGREDLSNIVAEAPKVRTNKVQGMEELED-MHYKLPAMDDR	204
Vc43	DDVSRKNLKYEALITAGFDGIMDIPELEDEGREDLSNVVAAAPKIRTNKVQGMEELED-MHFKLPAMDDR	203
Gg43	---VSSEGGDIPVIPDLEEVQEEEDLAMQVAAPPSVQVNRVLTYPHDLDKDLMKYAAFOTLDG	146
Ss43	---GSDDEGDIPVIPDLEEVQEEEDLTMQVAAPPSIQVNRVMTYRDLNDLDMKYSAFOTLDG	152
Hs43	---ASLEADIPVIPDLEEVQEEEDFVLQVAAPPSIQIKRVMTYRDLNDLDMKYSAIOTLDG	155
Mm43	---MGSDDDDIPVIPDLEEVQEEEDFVLQVASPPSIQVNRVMTYRDLNDLDMKYSAFOTLDG	148
Xt43	---ESDEGEDIPVIPDLEEVQEEEDLALQVASPPSVQVNRVLTYPKDLNDLMRHAAFOTLDG	142
Bf43	---RDSDEDIPVIPDLDVQEEEDMATQIAAPPSLQVNKIATYRELDLDFKQAAFLLD	169
Ph43	---KKDYIDDIPVIPSIDDLCDGLTYEIAKAPLVGVKNIATYKDLNDILQHSAFANFE ---	126
* ** : : : : : * * : : : * * : : :		
Cr43	DIDLKLLTKVLAPEHELVREDDVGVWDHLLFTEVSSELLTEWDVQGE --- REDHLSVP ---	272
Vc43	DIDLKLLTKVLAPEHELVREDDVGVWDHLLFTEVSSELLTEWDVQGE --- DGASGEETSFGKEDIVK ---	267
Gg43	FVDLKLLTKVLAPEHELVREDDVGVWDHLLFTEVSSELLTEWDVQGE --- REDHLSVP ---	201
Ss43	EIDLKLLTKVLAPEHELVREDDVGVWDHLLFTEVSSELLTEWDVQGE --- EQVPLPVL ---	207
Hs43	EIDLKLLTKVLAPEHELVREDDVGVWDHLLFTEVSSELLTEWDVQGE --- KEDPAGQARHT ---	213
Mm43	EIDLKLLTKVLAPEHELVREDDVGVWDHLLFTEVSSELLTEWDVQGE --- KEDPVGPSRYI ---	206
Xt43	DIDLKLLTKVLAPEHELVREDDVGVWDHLLFTEVSSELLTEWDVQGE --- KEDMLKPSPLVS ---	201
Bf43	EIDLKPLAKCLSAETDVLQEDKPDWDRFLFTEVTSELQVEWEAERPK --- EDEPLPMQG ---	226
Ph43	EVNFRLLIKLLHPEEYLNPEPDVAWTRDGLLYELFSKINGRKLSD ---	170