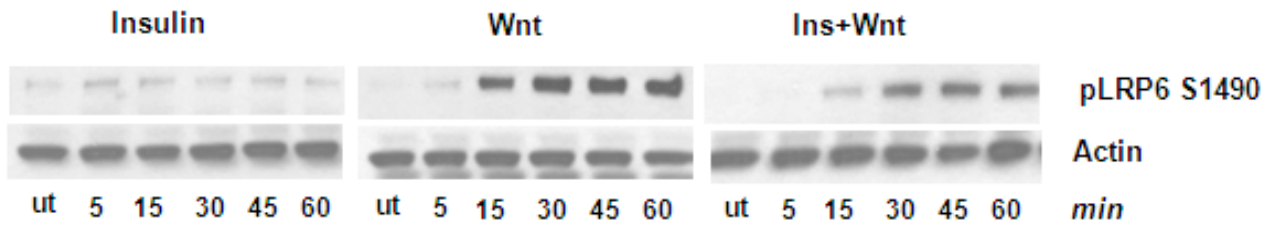


**FIGURE S2**



**FIGURE S2. Combined effects of insulin and wnt3a stimulations on LRP6 serine phosphorylation.**

3T3-L1 preadipocytes were stimulated with either insulin (100 nM), wnt3a (75 ng/ml), or a combination of the two for various time points up to 60 minutes. Total cell extracts were made and used directly for western blot analysis determining the phosphorylation level of LRP6 at serine 1490.