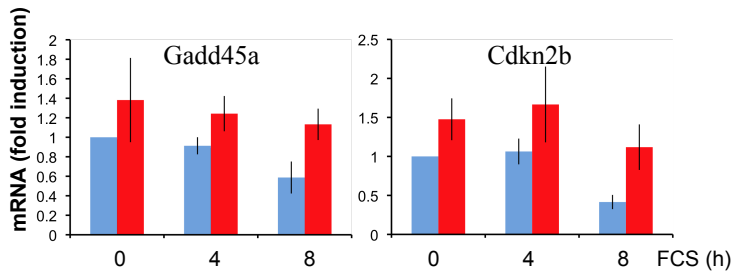
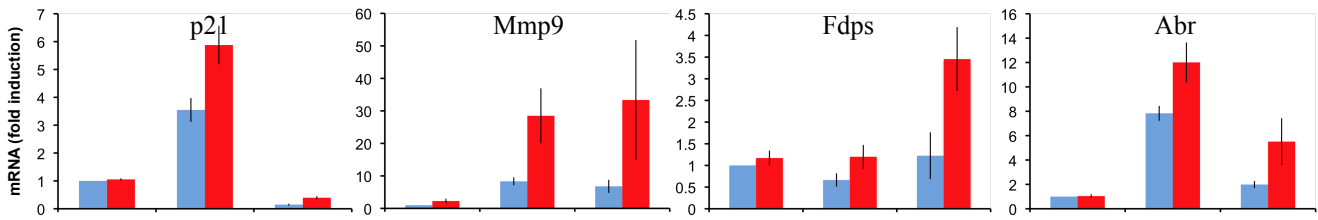


**B** Additional genes tested: repressed by serum ( $P \leq 0,05$ ) and Myc-dependent ( $P \leq 0,05$ )



Myc-dependent super-induction by serum ( $P \leq 0,05$ ) validated by RT-PCR



Myc-dependent super-induction by serum ( $P > 0,05$ ) not validated by RT-PCR

