

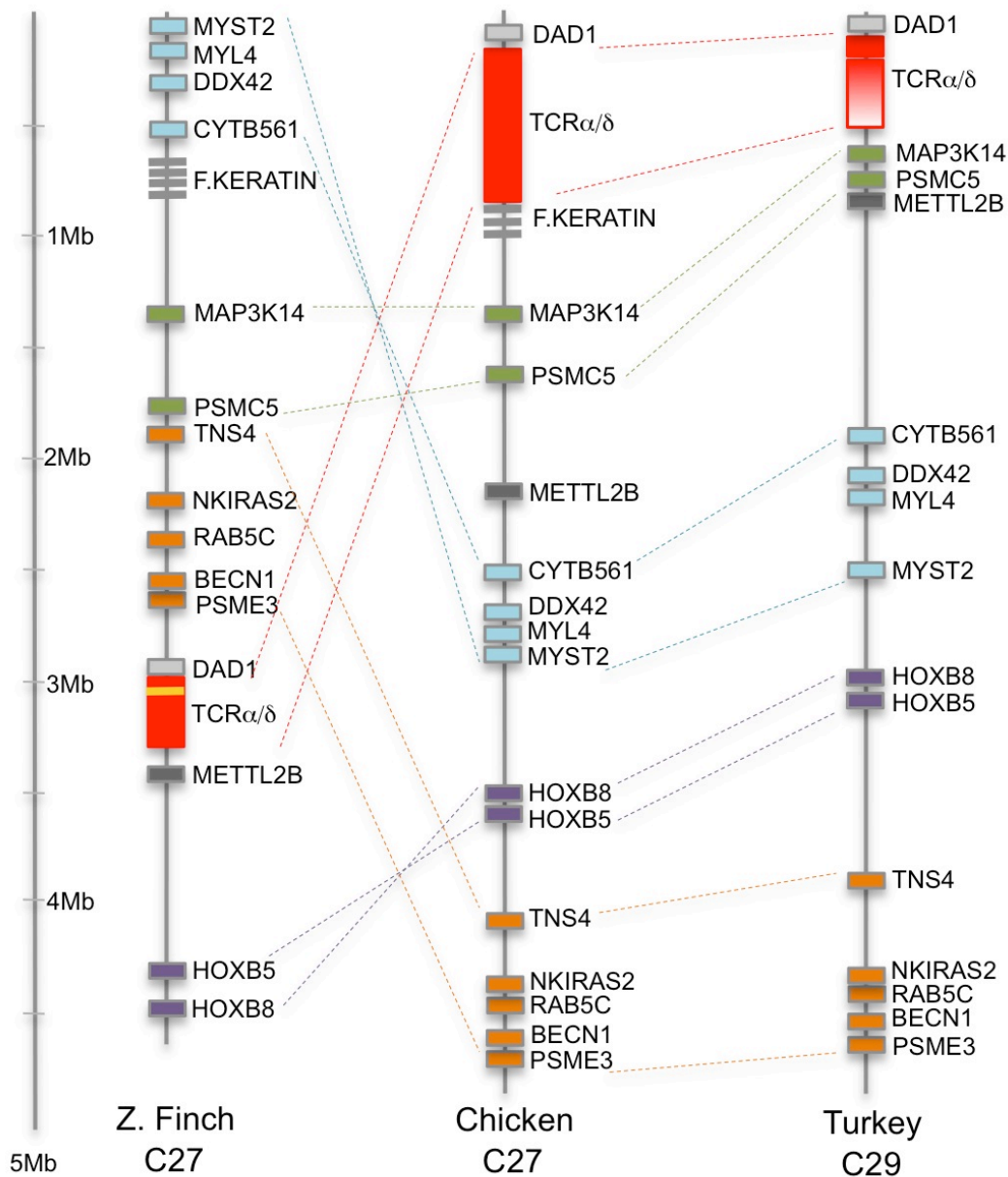
**Supporting Data Table 1. GenBank accession numbers for sequences used in figures 2 and 5.**

**Figure 2**

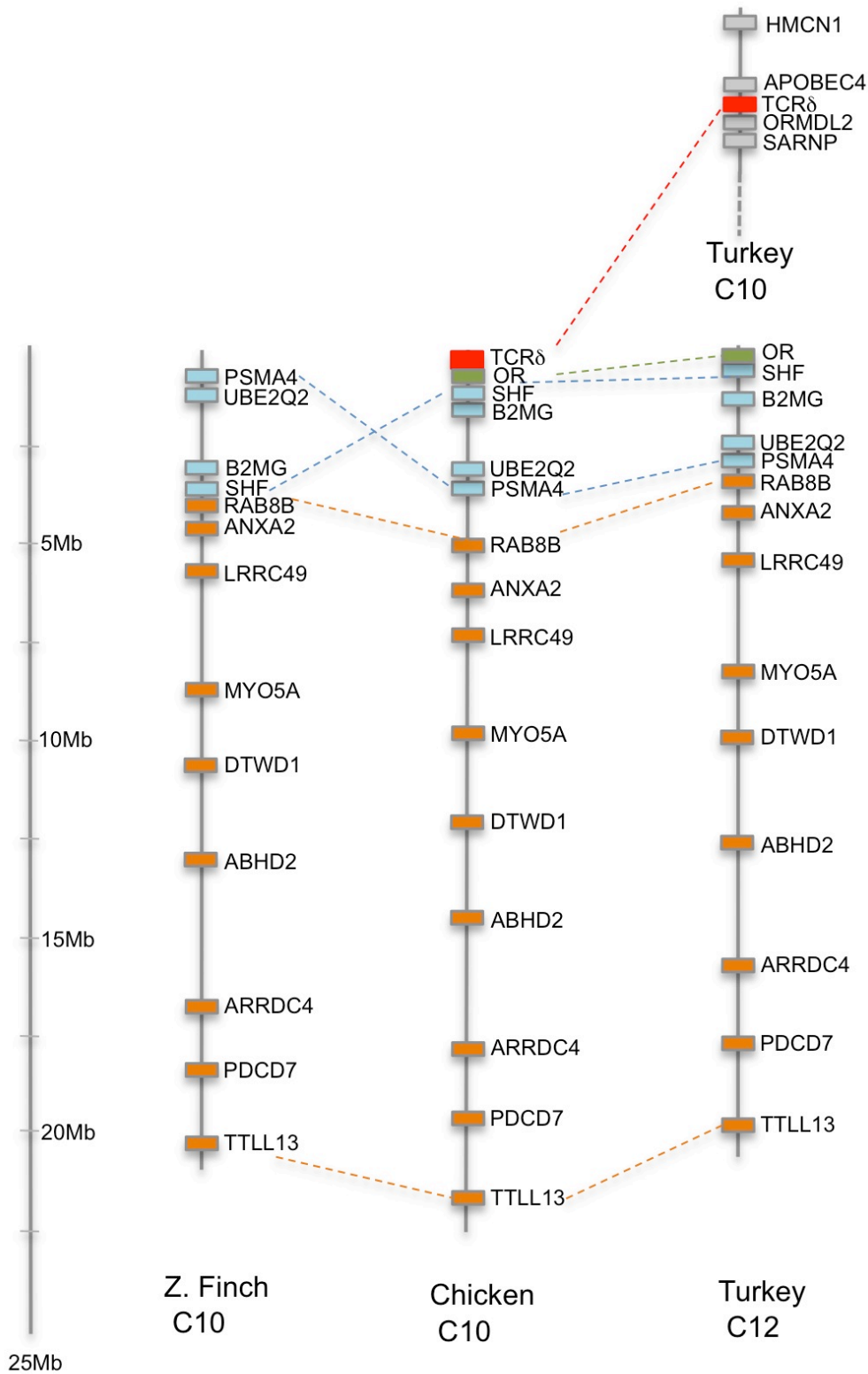
<b>Sequence</b>	<b>GenBank #</b>	<b>Sequence</b>	<b>GenBank #</b>
Human 968	FJ488968	Cow 502	AF015502
Human 147	X64147	Cow 841	AAB68841
Human 714	X05714	Sheep 104	AJ505104
Human 161	AY393161	Sheep 120	AJ505120
Human 199	AF471499	Goat 748	EU344748
Human 547	FM206547	Goat 604	EU182604
Human 668	ACS95668	Llama 297	AM180297
Human 926	AB202926	Llama 575	AY544575
Human 904	AB202904	Llama 133	AY342133
Human 607	BAH04607	Llama 486	AF441486
Sumatran Orangutan 722	CR857722	Camel 173	AJ245173
Olive Baboon 362	AF416362	Camel 669	FN665669
Rhesus monkey 846	DQ437846	Horse 431	DQ125431
Marmoset 359	AF397359	Possum 440	AAT40440
Marmoset 164	AF298164	Possum 442	AAT40442
Rhesus Monkey 968	HM044968	Opossum 113	AF012113
Marmoset 379	AF397379	Chicken 326	M30326
B. flying Fox 169	GQ427169	Chicken 329	M30329
Mouse 821	CH466821	Chicken 324	M30324
Mouse 185	AM262185	Chicken 333	M30333
Mouse 021	M27021	Chicken 327	M30327
Mouse 569	K01569	Chicken 328	M30328
Mouse 491	DQ113491	Chicken 340	M30340
Mouse 508	CAA85508	Frog 255	M27255
Rat 756	AM293756	Frog 681	M24681
Dolphin 195	AJ320195	Frog VHδ5.1	GQ262028
Cow 765	DQ485765	Frog 677	M24677

**Figure 5**

<b>Sequence</b>	<b>GenBank #</b>	<b>Sequence</b>	<b>GenBank #</b>
Human C $\delta$	M21624	Platypus C $\mu$	XP_001516799
Rabbit C $\delta$	D26555	Chicken C $\delta$ 1	Chr 27: 141100
Mouse C $\delta$	M37694	Chicken C $\delta$ 2	Chr 10: 95442
Rat C $\delta$	AF196214	Duck C $\delta$	AF415216
Hedgehog C $\delta$	Scaffold 6439:87631	Turkey C $\delta$ 1	Chr 29: 112003
Dog C $\delta$	XP_849861	Turkey C $\delta$ 2	Chr 10: 2967081
Pig C $\delta$	L21163	Zebra finch C $\delta$ 1	Chr 27: 3021481
Cow C $\delta$	D90420	Zebra finch C $\delta$ 2	Chr 27: 3039847
Sheep C $\delta$	Z12963	Axolotl C $\delta$	AAK33006
Elephant C $\delta$	Scaffold 7499:121555	Frog C $\delta$ 1	DQ022688
Armadillo C $\delta$	Scaffold 60423:42948	Frog C $\delta$ 2	GQ262036
Opossum C $\delta$	XP_001379771	Flounder C $\delta$ 1	AB081562
Opossum C $\mu$	XP_001369282	Horn shark C $\delta$	U22673
Platypus C $\delta$	Contig 588:545318		



**SD Figure 1.** Representation of avian orthologous chromosomes containing the conventional *TCRα/δ* locus in the zebra finch, chicken and turkey. The *TCRα/δ* locus is indicated in red. Conserved blocks of genes are indicated by common colors and connected by dashed lines to illustrate translocations and inversions in these orthologous chromosomes.



**SD Figure 2.** Atypical TCR $\delta$  chromosomal location in the Galliformes. Atypical TCR $\delta$  chromosomal location in the chicken compared to the orthologous chromosomes from turkey and zebra finch. Atypical TCR $\delta$  is indicated in red. Atypical TCR $\delta$  and flanking genes are indicated in partial turkey chromosome 10. Blocks of genes are indicated by common colors as in SD figure 1.