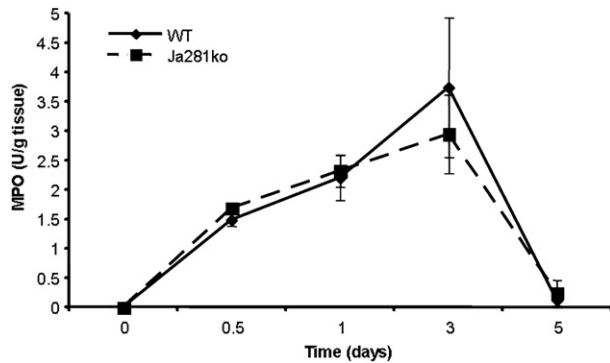


**SUPPLEMENTAL FIG 1.** Wound diameters in wild-type *versus* NKT cell-deficient *Jα281ko* mice. Wild type BALB/c and BALB/c-*Jα281ko* mice were each given four 5 mm dorsal excisional punch wounds. At 1, 3, 5, and 7 d post-injury, mice were re-anesthetized and photographed at a fixed distance. The photographs were then used to measure the diameter of each wound along its longest axis. Diameter measurements (in mm) were confirmed in blinded fashion by two separate investigators. Error bars represent SEM.  $n = 4$  mice per group. \* $P < 0.05$ .



**SUPPLEMENTAL FIG 2.** Wound neutrophil content in wild-type *versus* NKT cell-deficient *Jα281ko* mice. Wild type BALB/c and BALB/c-*Jα281ko* mice were each given six 3 mm dorsal excisional punch wounds. At 12 h and d 1, 3, and 5 post-injury, pelts were collected and wounds were weighed and then snap frozen. Neutrophil content in each wound was determined by myeloperoxidase assay. Skin from an unwounded animal was also analyzed (time 0). Error bars represent SEM.  $n = 4$  mice per group. Similar results were obtained from two separate experiments.

**SUPPLEMENTARY TABLE 1**

**Wound Macrophage Cell Counts in Wild Type *versus* *Jα281ko* Mice**

	WT	<i>Jα281ko</i>
Uninjured	6.88 ± 0.97	5.58 ± 0.97
12 Hour	8.97 ± 0.57	9.57 ± 0.74
Day 1	21.25 ± 1.85	19.25 ± 0.93
Day 3	25.03 ± 0.91	24.85 ± 1.14
Day 5	17.90 ± 0.58	17.83 ± 0.31

Data are represented as the percentage ( $\pm$ SEM) of F4/80+ cells identified by flow cytometric analysis of dermal cell suspensions from groups of animals killed at 12 h and 1, 3, and 5 d post-wounding. Dermal cell suspensions created from the dorsal skin of an uninjured animal were also analyzed.  $n = 4$  animals per group.

**SUPPLEMENTARY TABLE 2**

**Wound Neutrophil Cell Counts in Wild Type *versus* *Jα281ko* Mice**

	WT	<i>Jα281ko</i>
Uninjured	0.64 ± 0.08	0.77 ± 0.24
12 Hour	44.65 ± 3.54	43.03 ± 3.41
Day 1	49.08 ± 1.85	48.18 ± 3.13
Day 3	28.58 ± 2.73	29.20 ± 2.51
Day 5	9.35 ± 4.56	11.67 ± 2.18

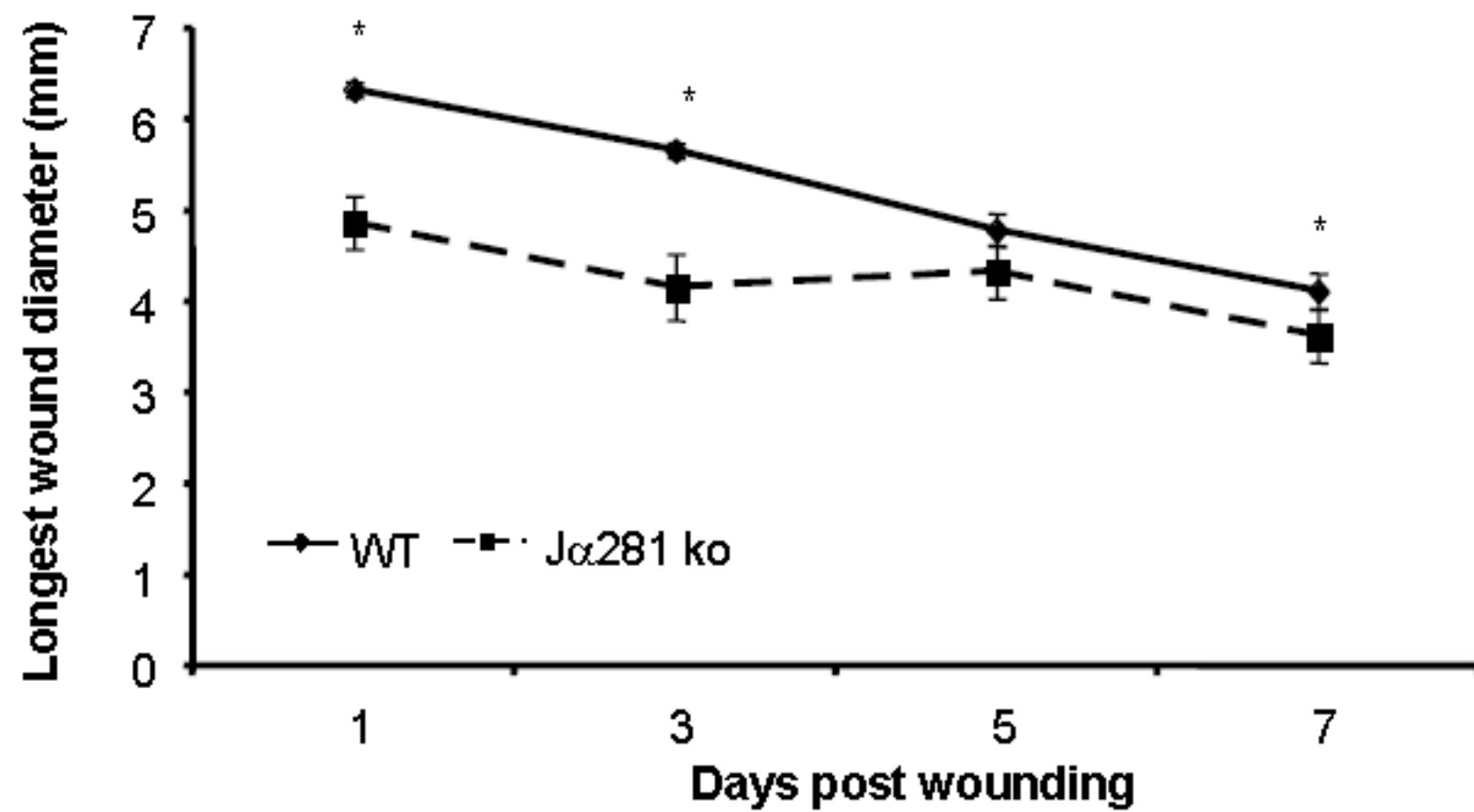
Data are represented as the percentage ( $\pm$ SEM) of Gr-1+ cells identified by flow cytometric analysis of dermal cell suspensions from groups of animals killed at 12 h and 1, 3, and 5 d post-wounding. Dermal cell suspensions created from the dorsal skin of an uninjured animal were also analyzed.  $n = 4$  animals per group.

Type of file: figure

Label: Fig 1

Filename: Suppl Fig 1.tif

Supplemental Figure 1

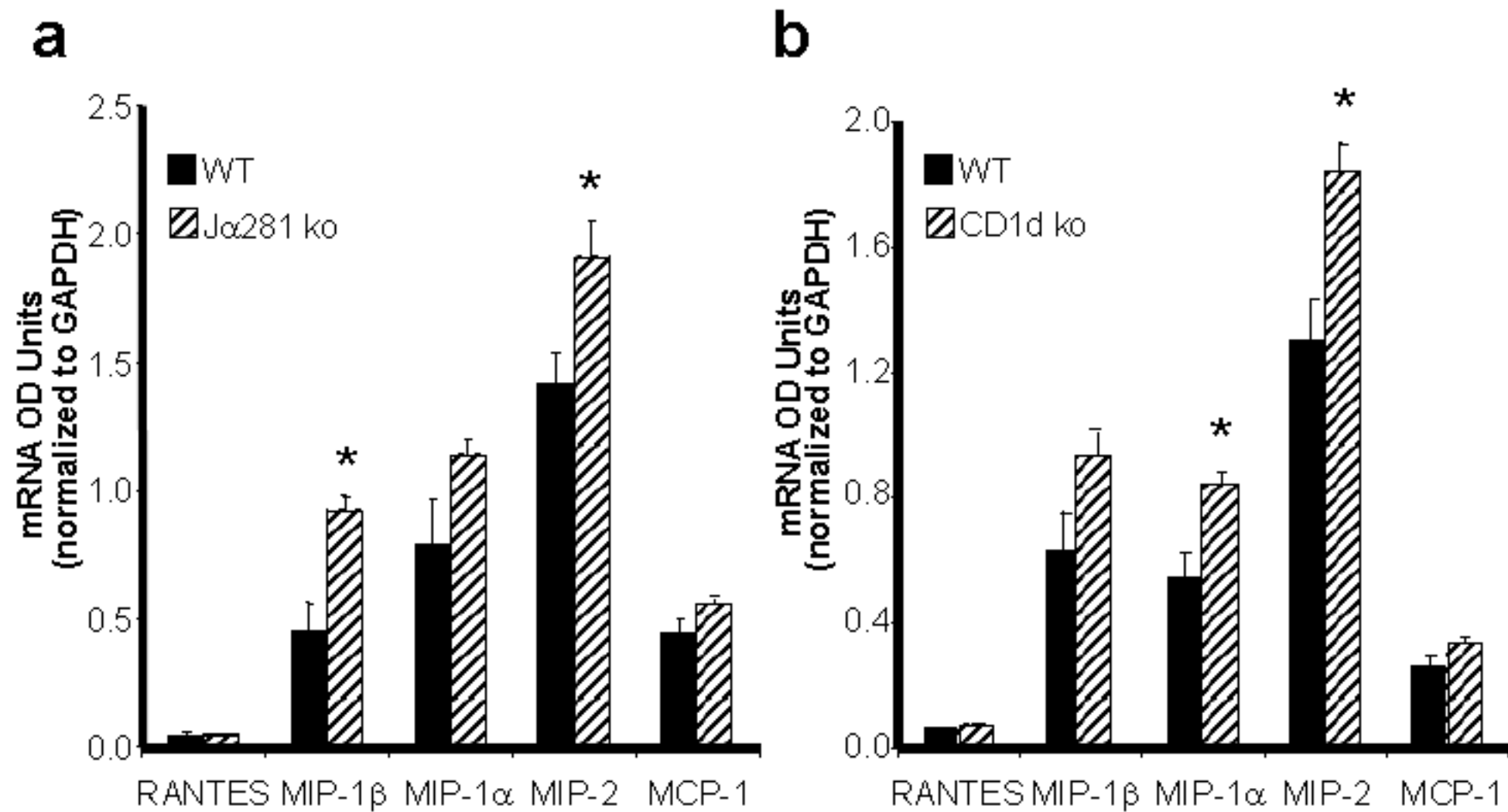


Type of file: figure

Label: Fig 2

Filename: Suppl Fig 2.tif

Supplemental Figure 2

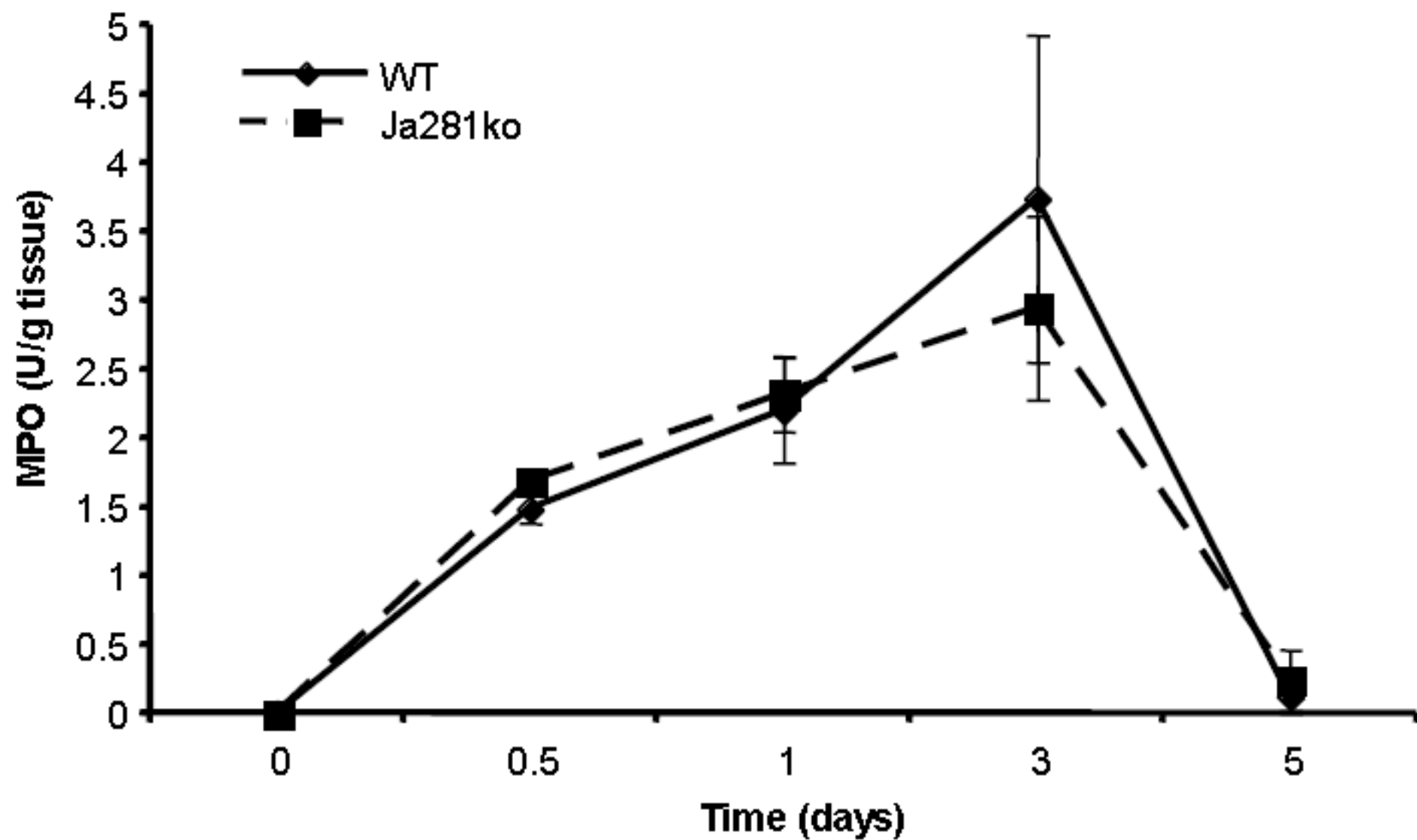


Type of file: figure

Label: Fig 3

Filename: Suppl Fig 3.tif

Supplemental Figure 3



Type of file: table

Label: Table 1

Filename: Supplementary Table 1.doc



**Supplementary Table 1.**  
**Wound macrophage cell counts in wild type versus J $\alpha$ 281ko mice**

	WT	J $\alpha$ 281ko
Uninjured	6.88 $\pm$ 0.97	5.58 $\pm$ 0.97
12 Hour	8.97 $\pm$ 0.57	9.57 $\pm$ 0.74
Day 1	21.25 $\pm$ 1.85	19.25 $\pm$ 0.93
Day 3	25.03 $\pm$ 0.91	24.85 $\pm$ 1.14
Day 5	17.90 $\pm$ 0.58	17.83 $\pm$ 0.31

Data are represented as the percentage ( $\pm$  SEM) of F4/80+ cells identified by flow cytometric analysis of dermal cell suspensions from groups of animals killed at 12 hours and 1, 3, and 5 days post-wounding. Dermal cell suspensions created from the dorsal skin of an uninjured animal were also analyzed. N=4 animals per group.

Type of file: table

Label: Table 2

Filename: Supplementary Table 2.doc

**Supplementary Table 2.****Wound neutrophil cell counts in wild type versus J $\alpha$ 281ko mice**

	WT	J $\alpha$ 281ko
Uninjured	0.64 $\pm$ 0.08	0.77 $\pm$ 0.24
12 Hour	44.65 $\pm$ 3.54	43.03 $\pm$ 3.41
Day 1	49.08 $\pm$ 1.85	48.18 $\pm$ 3.13
Day 3	28.58 $\pm$ 2.73	29.20 $\pm$ 2.51
Day 5	9.35 $\pm$ 4.56	11.67 $\pm$ 2.18

Data are represented as the percentage ( $\pm$  SEM) of Gr-1+ cells identified by flow cytometric analysis of dermal cell suspensions from groups of animals killed at 12 hours and 1, 3, and 5 days post-wounding. Dermal cell suspensions created from the dorsal skin of an uninjured animal were also analyzed. N=4 animals per group.