

Supporting Information

Deegan 10.1073/pnas.1119737109

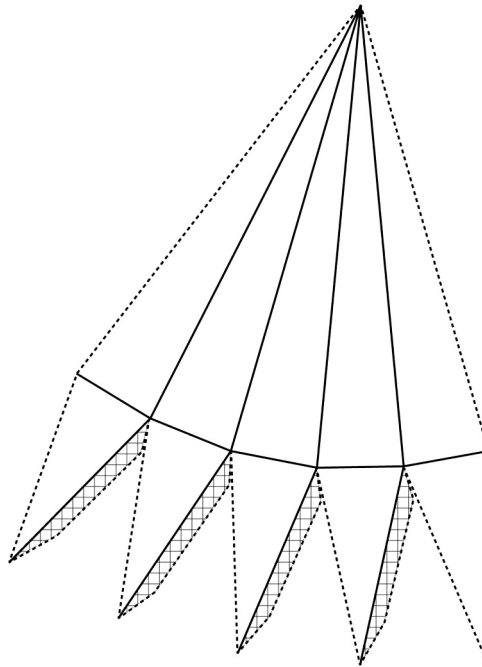
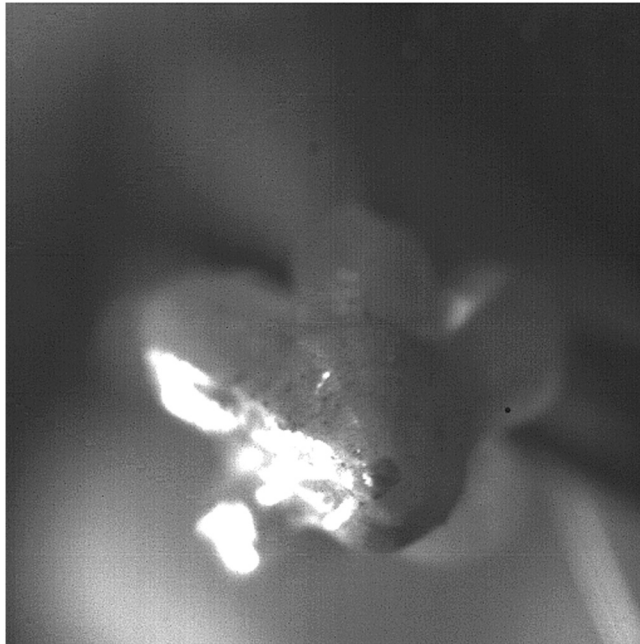


Fig. S1. Paper model for illustrating coupling between valves shown in Fig. S2. Cut along dotted line, crease solid lines, and glue hatched flaps to neighboring triangle.



Movie S2. Creeping crack filmed at 3,100 frames-per second. The film shows a slow moving crack progating down the left seam. When it reaches about 50% of the seam length it initiates an explosive release of the seeds.

[Movie S2 \(AVI\)](#)



Movie S3. Exploding pod filmed from below at 3,800 frames-per second. Note that all the seams open within one frame (263 microseconds).

[Movie S3 \(WMV\)](#)