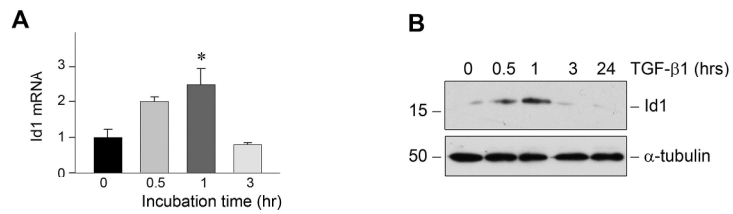


**Supplementary table 1. The sequences of the PCR primer pairs used in this study**

| <b>Gene</b>    | <b>GenBank accession number</b> | <b>Sense</b>               | <b>Anti-sense</b>          | <b>Product size</b> |
|----------------|---------------------------------|----------------------------|----------------------------|---------------------|
| Id1            | NM_010495                       | 5'-catgaacggctgctactcac-3' | 5'-gtgggcccgacttcagactc-3' | 150                 |
| Id3            | NM_008321                       | 5'-actcagcttagccaggtgga-3' | 5'-ggagatcacaagttccggag-3' | 150                 |
| RANTES         | M77747                          | 5'-tgctgctttgcctacctc-3'   | 5'-tgaaccacttcttctctgg-3'  | 150                 |
| TNF- $\alpha$  | NM_013693                       | 5'-tcgtagcaaaccaccaagtg-3' | 5'-cttgaagagaacctgggag-3'  | 150                 |
| Collagen I     | NM_007742                       | 5'-atctcctggtgctgatggac-3' | 5'-accttgttgccaggttcac-3'  | 154                 |
| Collagen III   | NM_009930                       | 5'-aggcaacagtggttctcctg-3' | 5'-gacctcgtgctccagttagc-3' | 149                 |
| $\beta$ -actin | NM_007393                       | 5'-cagctgagagggaaatcgtg-3' | 5'-cgttgccaatagtgatgacc-3' | 150                 |



**Supplementary Figure 1.** TGF- $\beta$ 1 induces Id1 expression in mouse inner medullary collecting duct epithelial cells. Mouse mIMCD-3 cells were incubated with TGF- $\beta$ 1 (2 ng/ml) for various periods of time as indicated. (A) Real-time RT-PCR showed that TGF- $\beta$ 1 induced Id1 mRNA expression. \* $P < 0.05$  ( $n = 3$ ). (B) TGF- $\beta$ 1 induced Id1 protein expression in mIMCD-3 cells as shown by Western blot analyses.

190x113mm (600 x 600 DPI)