

Figure S1: SAXS analysis

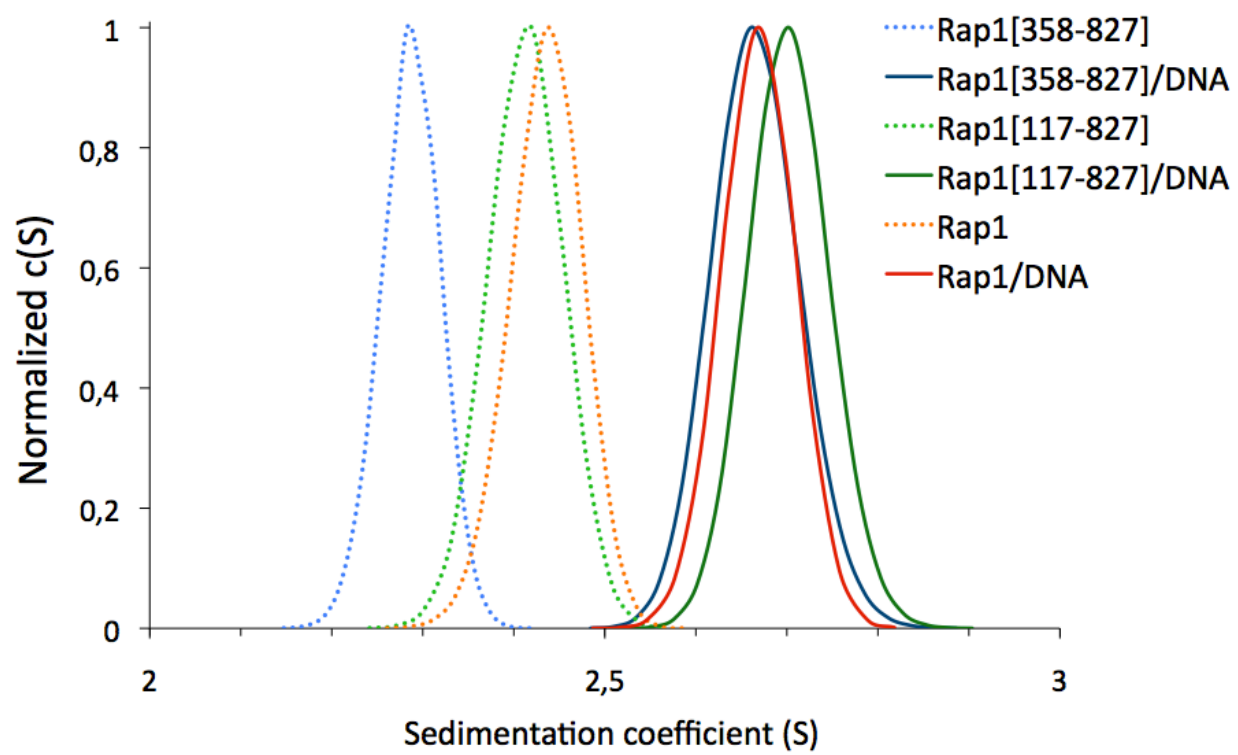


Figure S2 : Analytical Ultracentrifugation Sedimentation

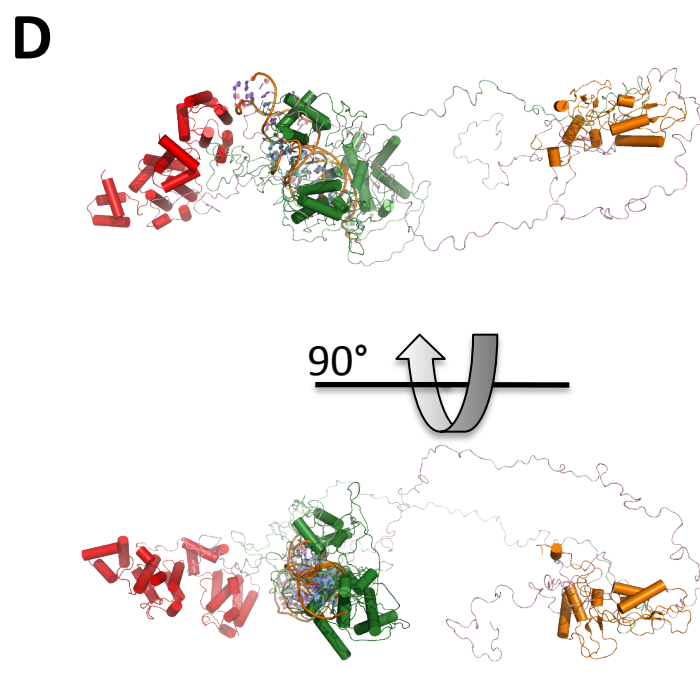
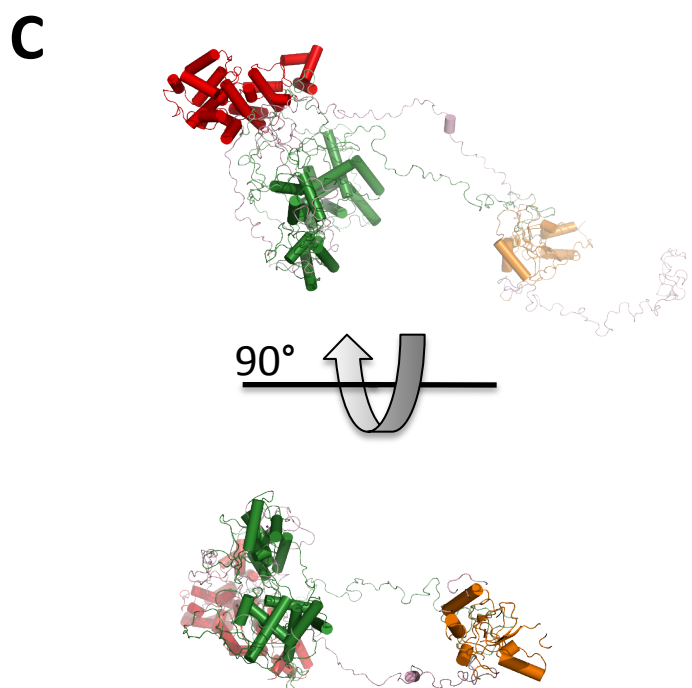
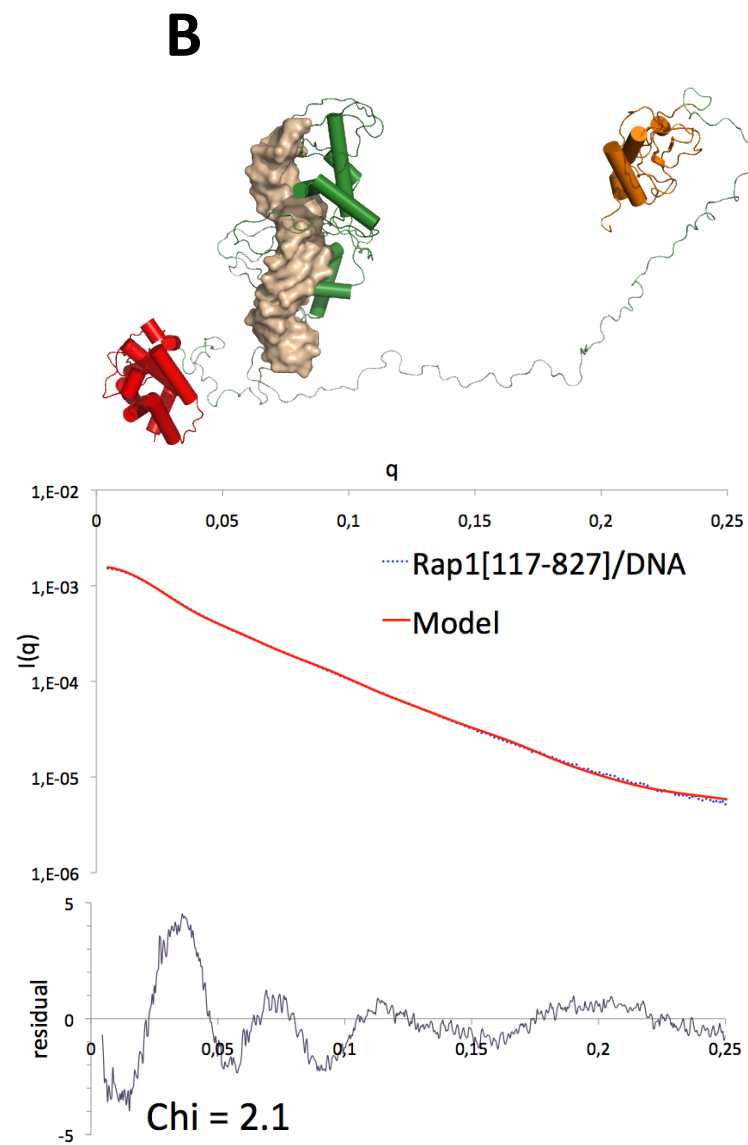
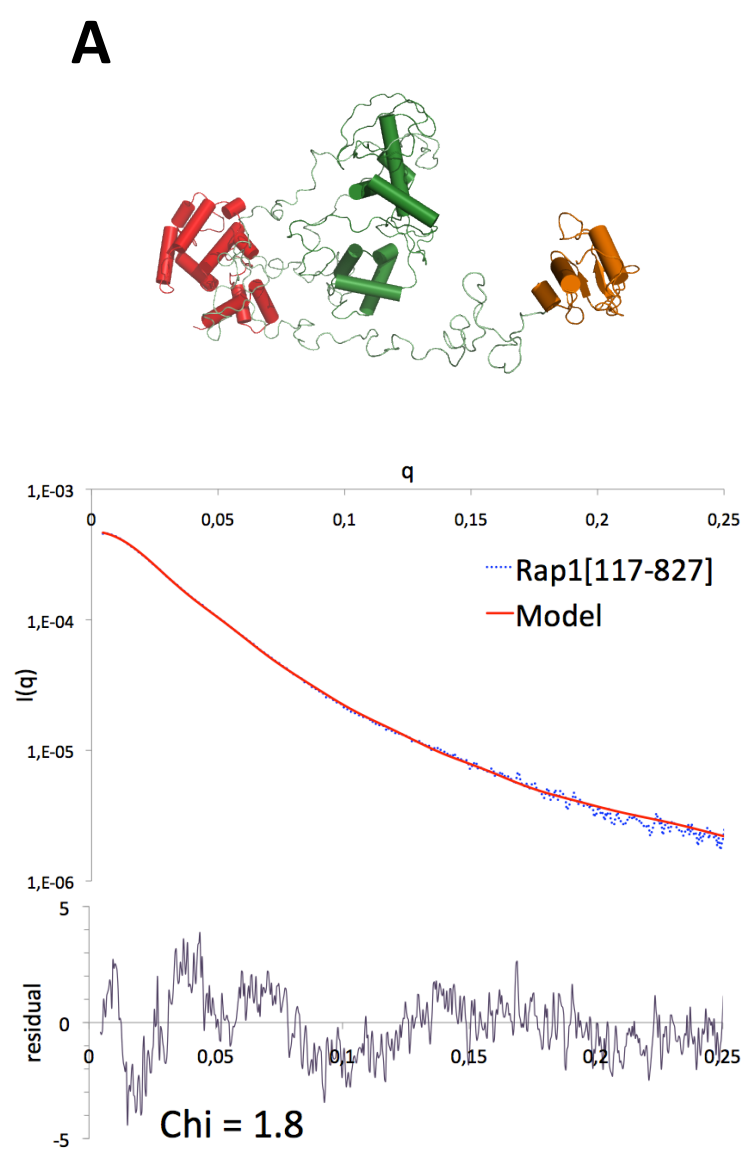


Figure S3: SAXS analysis of intermediate construct Rap1_[117-827]

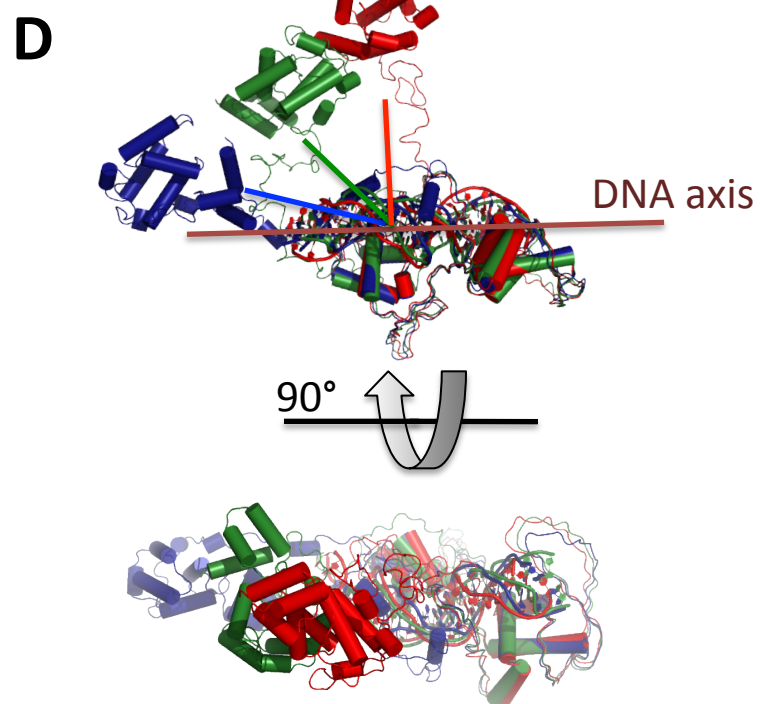
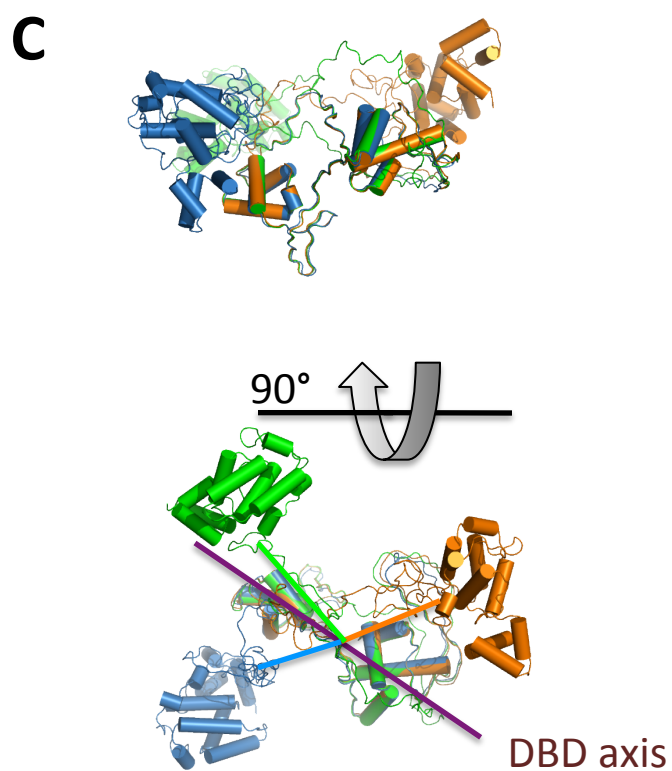
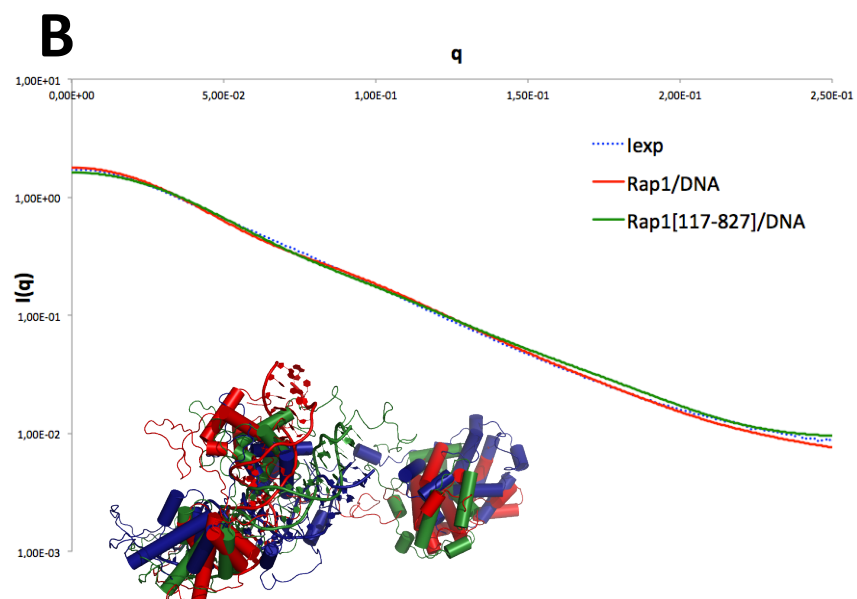
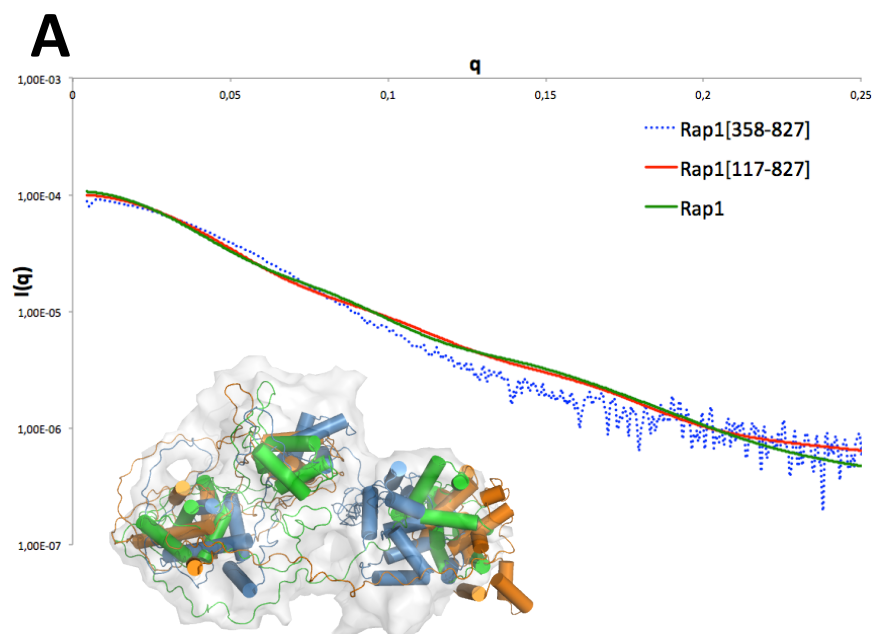


Figure S4 : **Rap1_[358-827]** conformational adjustment

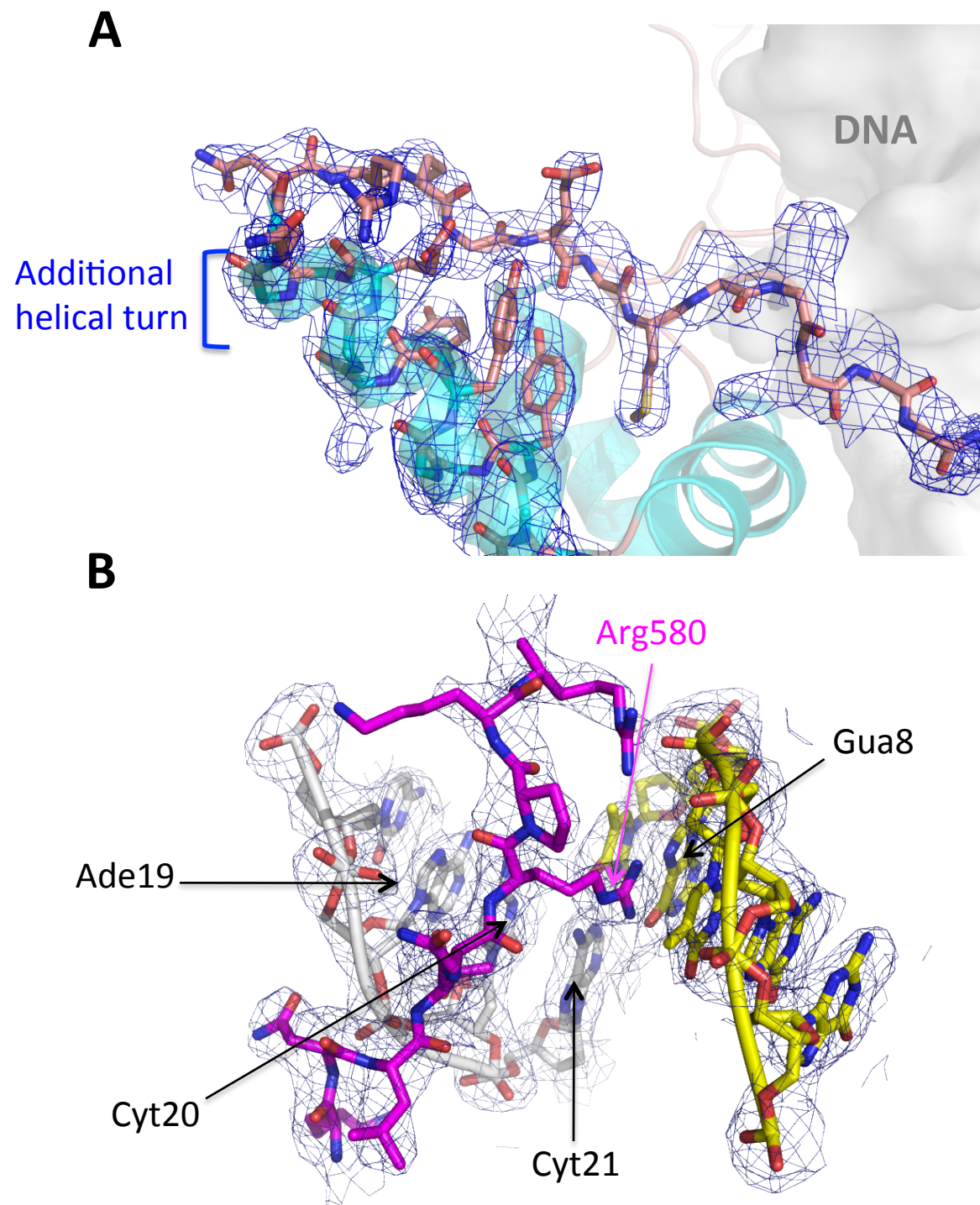


Figure S5: **Crystal structure of Rap1_{DBD}/DNA**

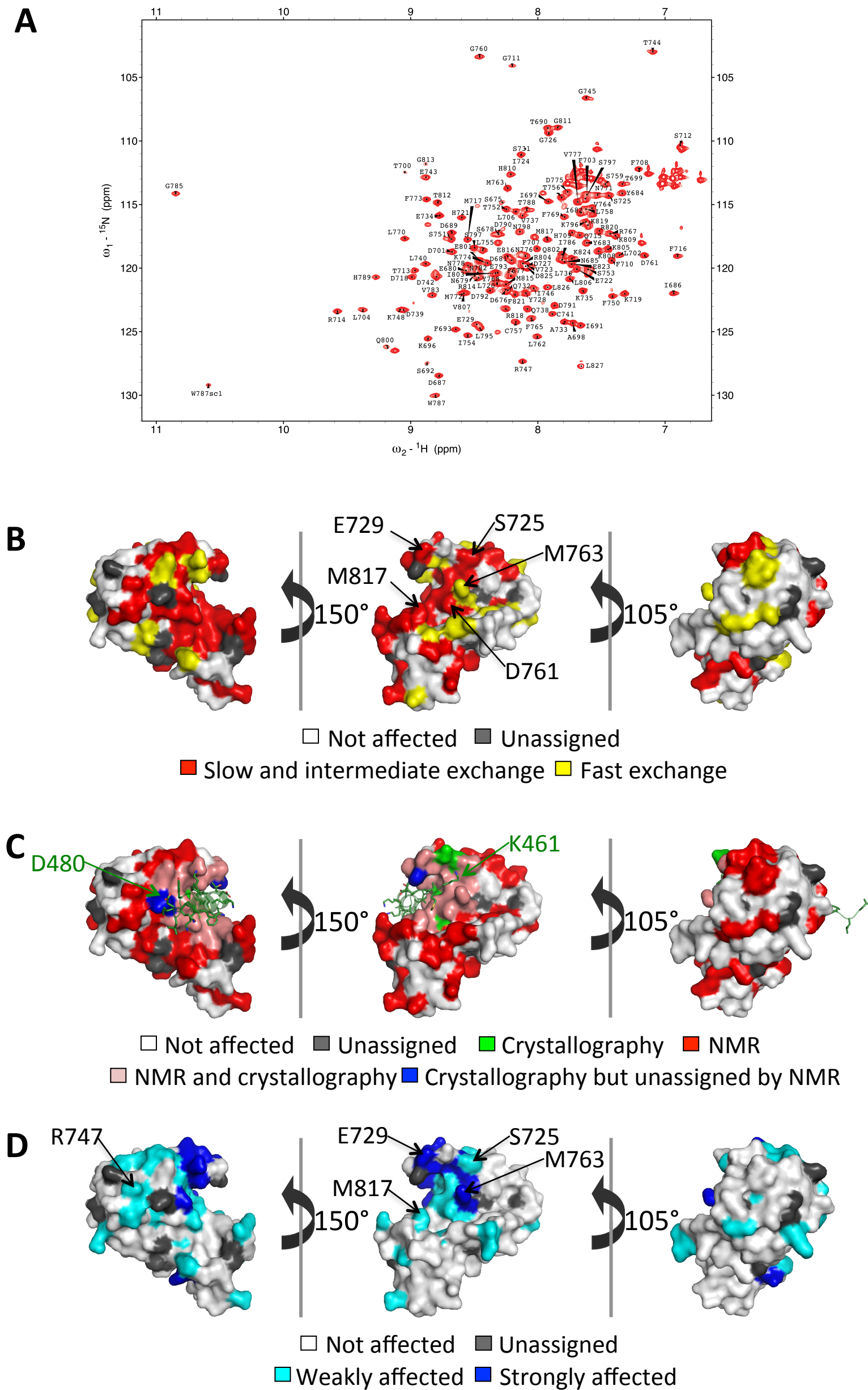
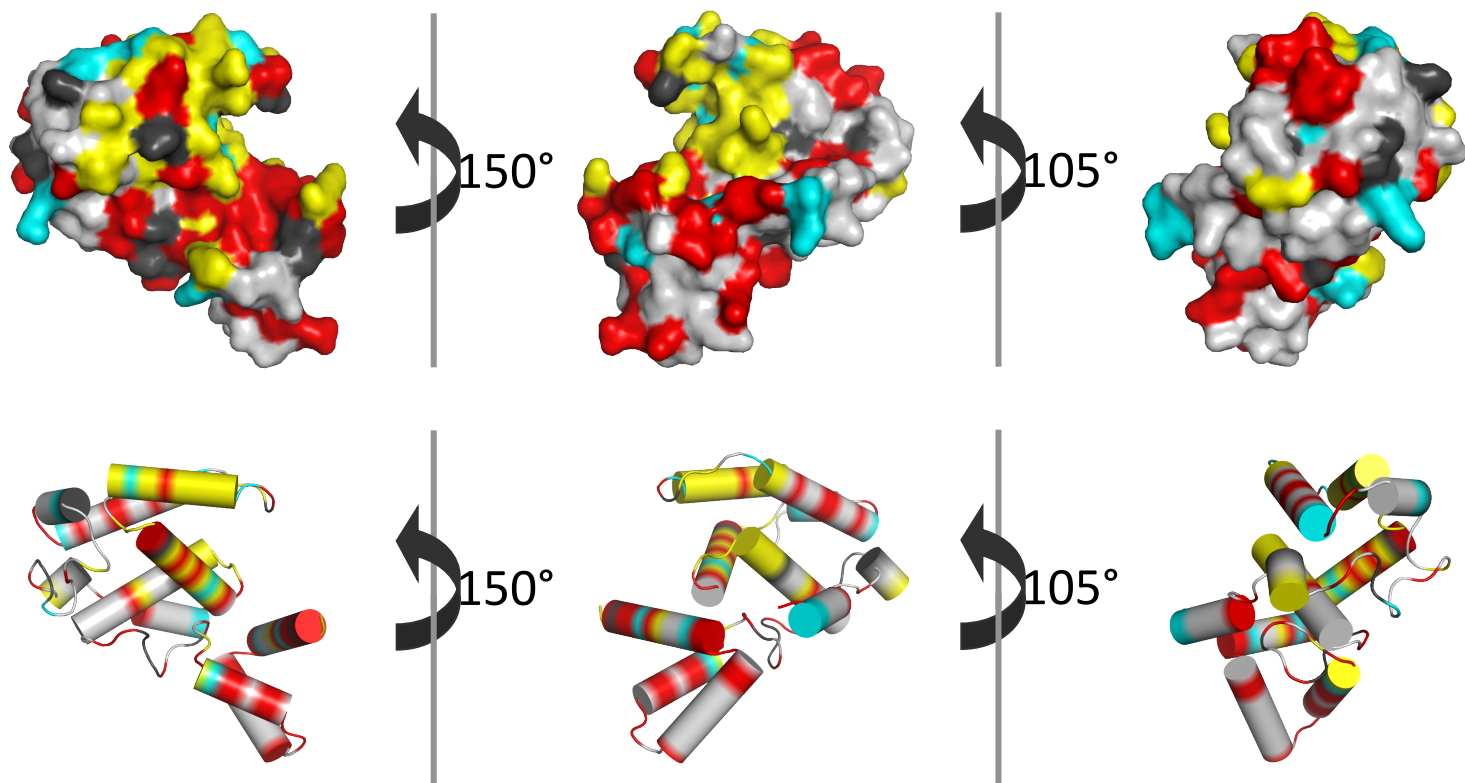


Figure S6 : NMR titration

A

□ Not affected ■ Unassigned ■ Sir3
■ Rif2 ■ Common to Sir3 and Rif2

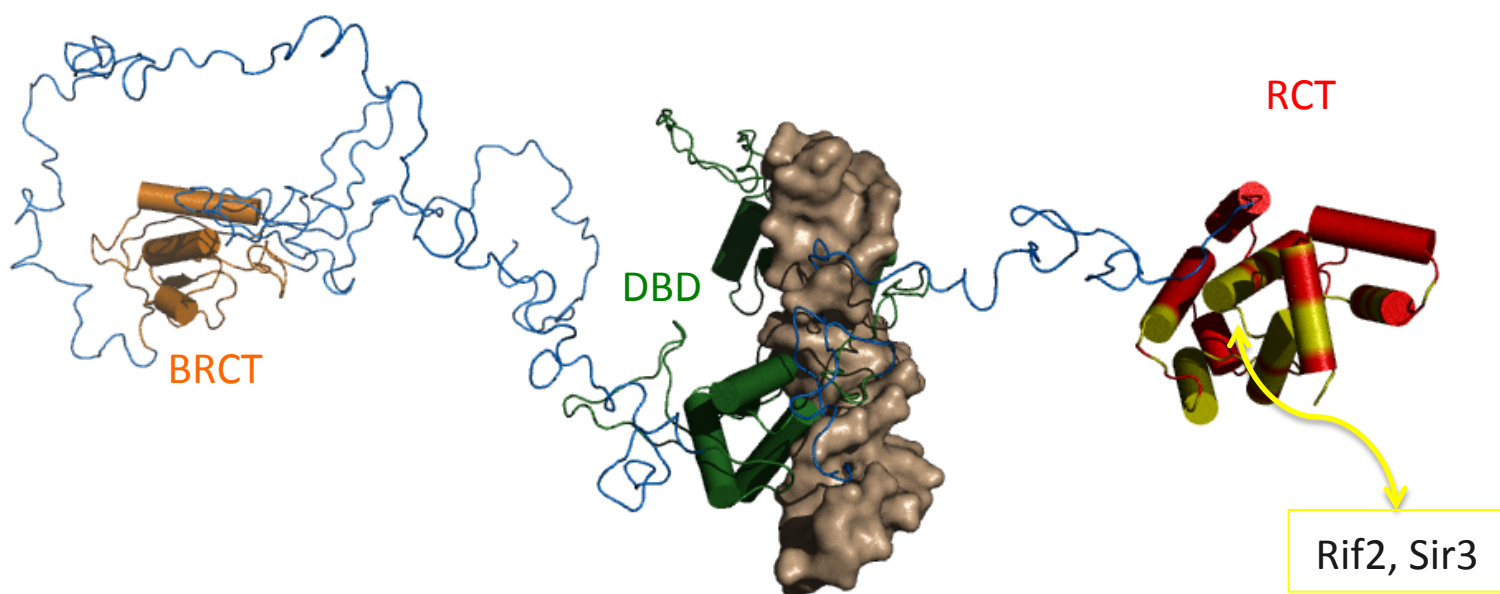
B

Figure S7: Interaction surface of Rap1 RCT domain with Rif2 and Sir3

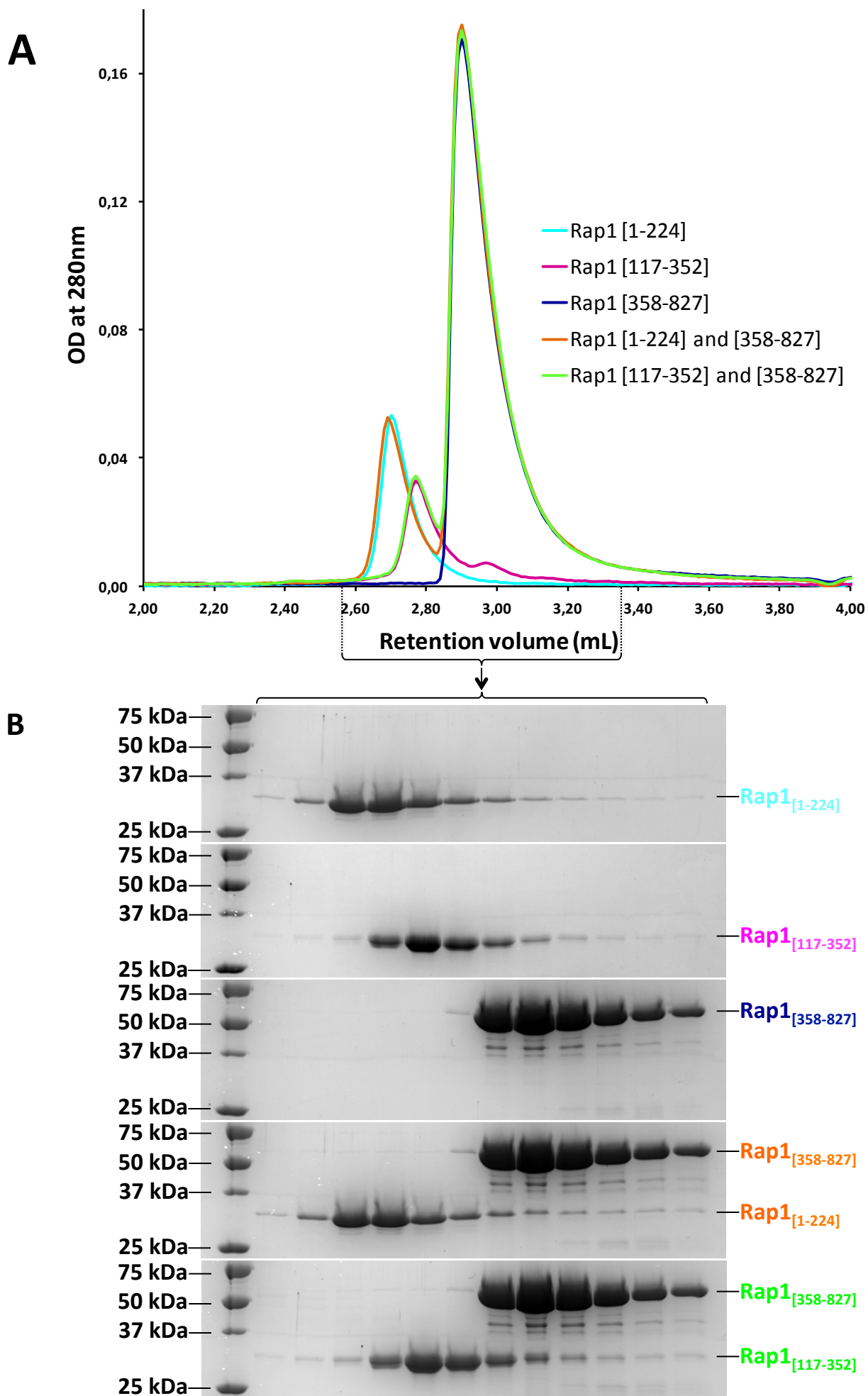


Figure S8: Interaction analysis between Rap1_[358-827] and Rap1_[1-224] or Rap1_[117-352].