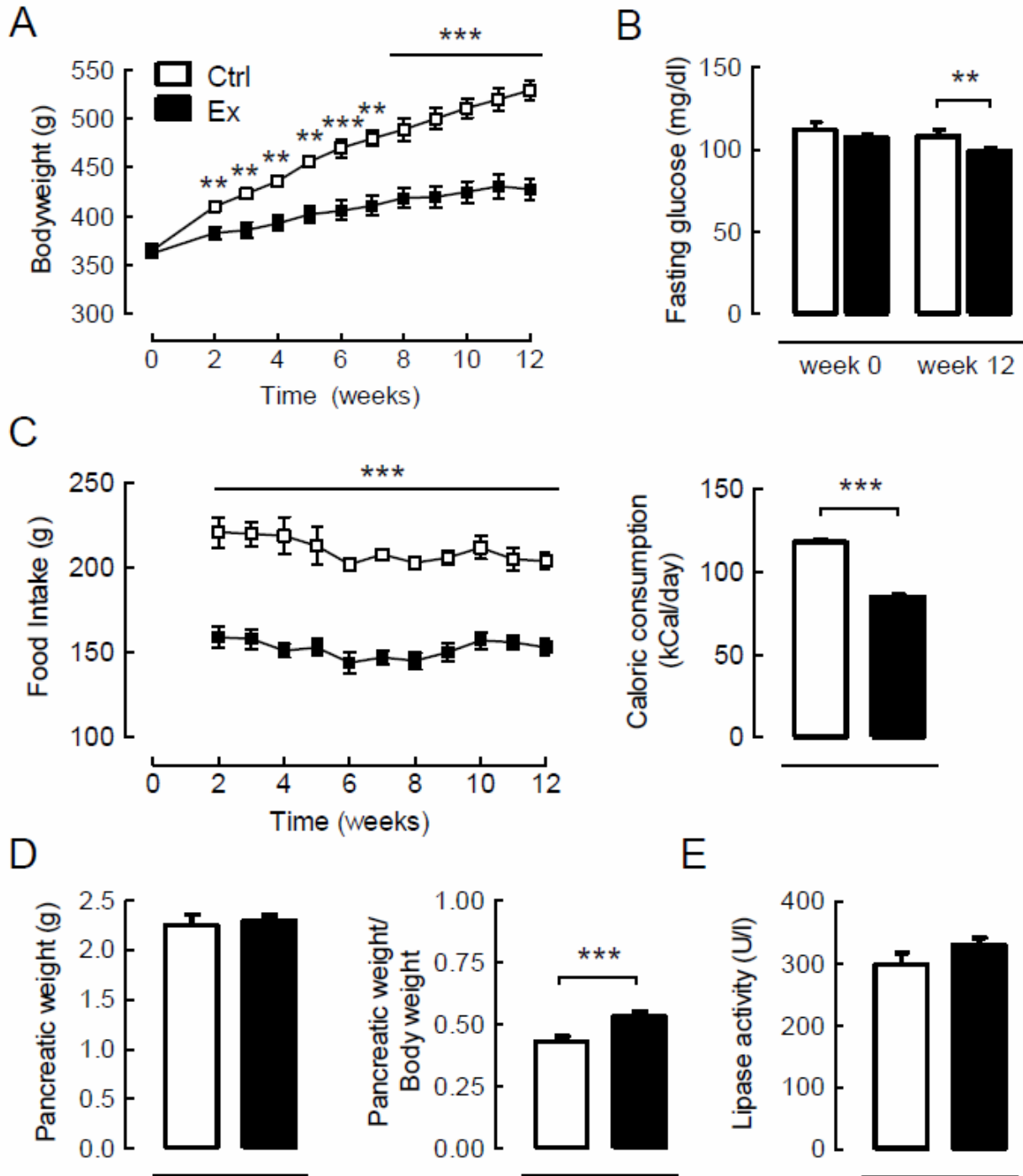


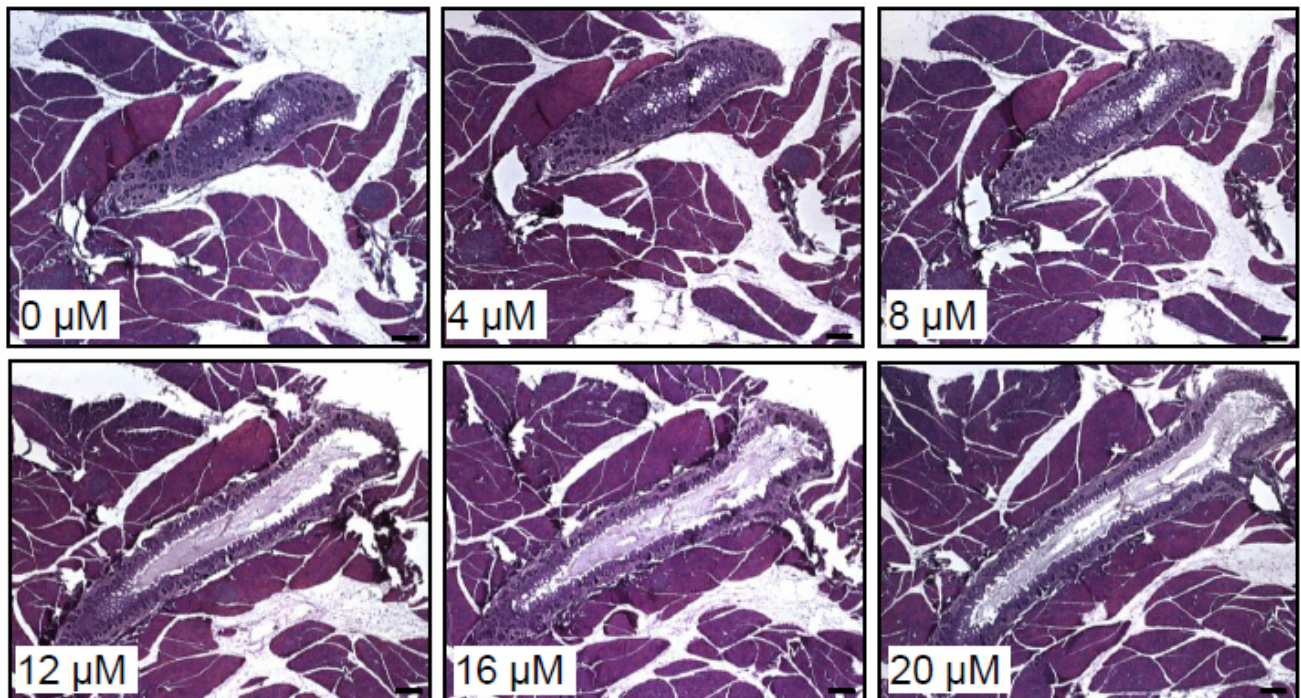
SUPPLEMENTARY DATA

**Supplementary Figure 1.** Metabolic features of control and exendin-4 treated rats. (A) Body weight, (B) fasting plasma glucose, mean daily food intake and (C) mean daily caloric consumption, (D) pancreatic weight as well as (E) plasma lipase activity of control rats (Ctrl) and after 12 weeks treatment with exendin-4 (Ex). \*\* $P < 0.01$ , \*\*\* $p < 0.001$ , data are presented as mean  $\pm$  SE



SUPPLEMENTARY DATA

**Supplementary Figure 2.** Serial sections of a characteristic PDG compartment with chronic GLP-1 stimulation. Serial sections stained for H&E of the PDG compartment of an exendin-4 treated animal. Scale bars = 200  $\mu$ M.



SUPPLEMENTARY DATA

**Supplementary Figure 3.** Metabolic features of control and exendin-4 treated Pdx1-Kras mice.

(A) Body weight, (B) fasting plasma glucose, (C) mean daily food intake, (D) pancreatic weight as well as (E) plasma lipase activity of control Pdx1-Kras mice (Ctrl) and after 12 weeks treatment with exendin-4 (Ex). \* $P < 0.05$ , \*\* $p < 0.01$ , \*\*\* $p < 0.001$ , data are presented as mean  $\pm$  SE

