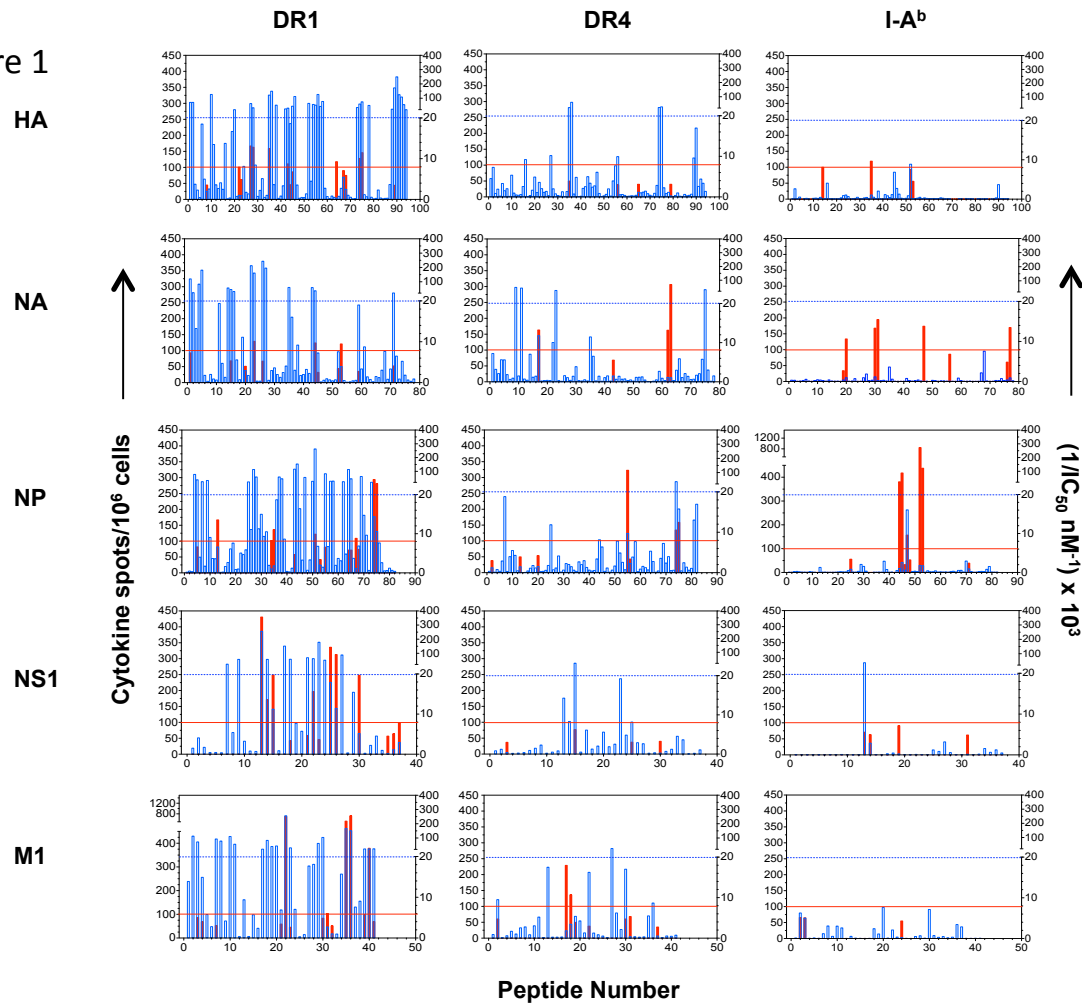


Supplemental Figure 1



Supplemental Figure 1: NetMHCII-2.2:-predicted vs. empirically identified CD4 T cells epitopes

The sequences for HA, NA, NP, NS1, and M1 from Influenza A/New Caledonia/20/99 were collected from the Protein Data Bank and scored by <http://www.cbs.dtu.dk/services/NetMHCII/>. The results from NetMHC2.2 (solid blue lines) were limited to the 17-mer peptides that were tested experimentally. In order to have higher values representing higher scores, we converted the IC_{50} values predicted: $[1/IC_{50} \text{ predicted}] \times 10^3$. Peptides with IC_{50} values lower than 50nM are considered strong binders. The dotted horizontal blue line represents the cut-off between weak and strong binders. The red line shows the peptides that were experimentally found to elicit more than 100 cytokine spots per million CD4 T cells tested.