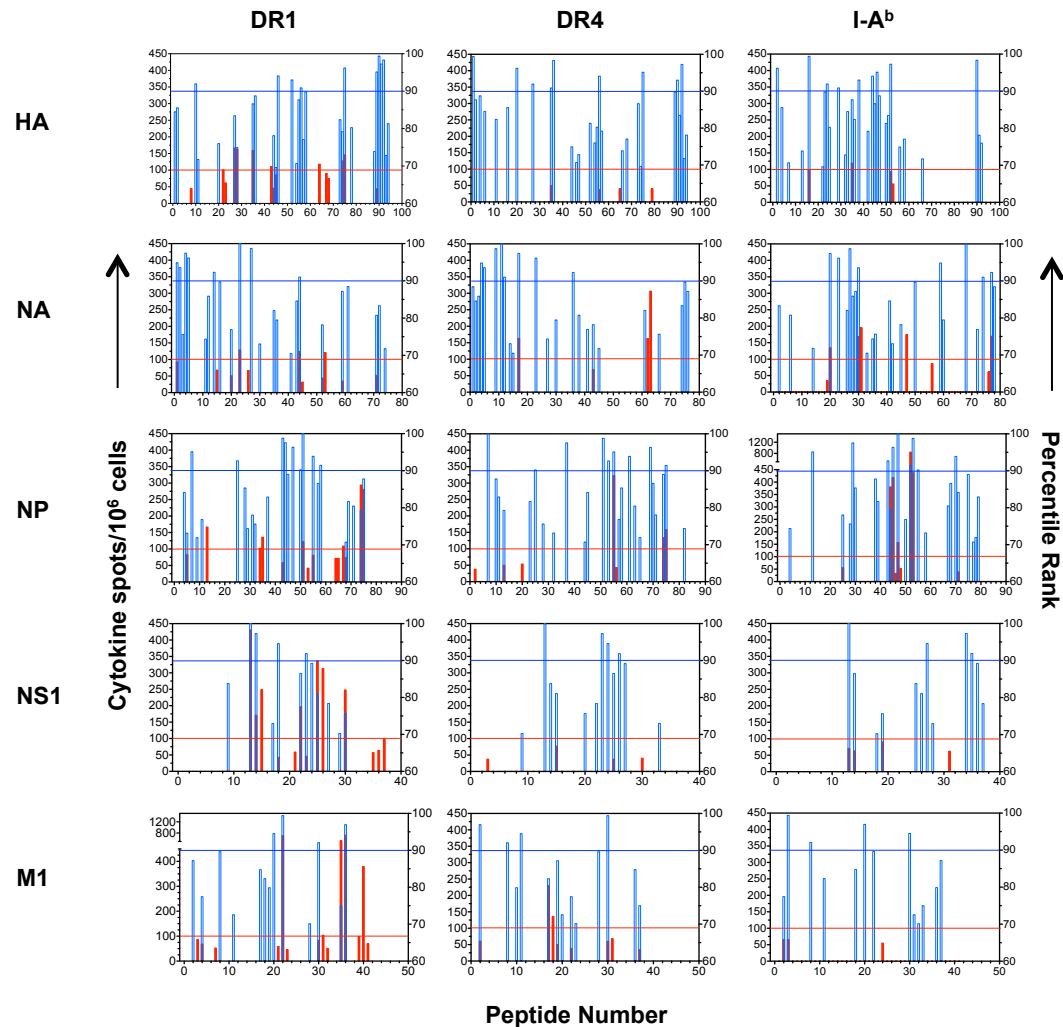


Supplemental Figure 2



Supplemental Figure 2: Consensus-predicted vs. empirically identified CD4 T cells epitopes.

The sequences for HA, NA, NP, NS1, and M1 from Influenza A/New Caledonia/20/99 were collected from the Protein Data Bank and scored by http://tools.immuneepitope.org/analyze/html/mhc_II_binding.html. Consensus restricts the output to only 15-mer peptides. The N-terminus of the predicted peptide was aligned to the experimentally tested 17-mer peptide, and adjusted if necessary to avoid penalizing a peptide for a core at the peptides amino terminus, as described in Materials and Methods The percentile rank represents the relative position of each of the peptides and is shown in blue. The horizontal blue line shows the 10% most top-ranked peptides. Also indicated by the horizontal red line is the cutoff for 100 cytokine-producing cells.