

Transcriptional Hallmarks of Noonan Syndrome and Noonan-Like Syndrome with Loose Anagen Hair in Human Peripheral Blood Cells

G.B. Ferrero, G. Picco, G. Baldassarre, E. Flex, C. Isella, D. Cantarella, D. Corà, N. Chiesa, N. Crescenzo, F. Timeus, G. Merla, L. Mazzanti, G. Zampino, C. Rossi, M. Silengo, M. Tartaglia, E. Medico

Supporting Information

Supp. Methods	3
I. Microarray data processing and filtering	3
a. Scaling, Log ₂ transformation and detection filtering	3
b. Removal of genes correlated with age, sex, or differential leukocyte count.....	3
c. Log ₂ ratio transformation.....	3
II. Microarray data analysis.....	4
a. Selection of genes differentially expressed between controls and mutated groups.....	4
b. Montecarlo simulation for FDR estimation.....	4
c. Weighted average score for full leave-one-out classification analysis.....	4
III. Functional data mining.....	4
a. Functional annotation analysis.....	4
b. Kinase Enrichment analysis.....	4
c. Protein-protein interactions analysis.....	5
d. Binding site analysis and transcriptional circuits	5
Supp. Figures	6
Supp. Figure S1	Error! Bookmark not defined.
Supp. Figure S2	Error! Bookmark not defined.
Supp. Figure S3	Error! Bookmark not defined.
Supp. Figure S4	Error! Bookmark not defined.

Supp. Tables.....	9
Supp. Table S1	Error! Bookmark not defined.
Supp. Table S2A	Error! Bookmark not defined.
Supp. Table S2B.....	Error! Bookmark not defined.
Supp. Table S2C.....	Error! Bookmark not defined.
Supp. Table S2D	Error! Bookmark not defined.
Supp. Table S2E.....	73
Supp. Table S3	Error! Bookmark not defined.
Supp. Table S4A	Error! Bookmark not defined.
Supp. Table S4B.....	Error! Bookmark not defined.
Supp. Table S5	Error! Bookmark not defined.

Supp. Methods

I. Microarray data processing and filtering

a. Scaling, Log₂ transformation and detection filtering.

Cubic spline-normalized probe signals, together with detection p-values, were obtained using the Illumina BeadStudio 3.1 software with background subtraction. To avoid negative values, the fixed amount of 50 was added back to each data point prior to log₂ transformation. Subsequent data filtering and analysis was carried out with Excel (Microsoft). To the 20584 probes analyzed, we applied a statistical filter to select genes with reliable signal detection, selecting genes with a detection value (as provided by BeadStudio) greater than 0.999 in at least 5 samples.

b. Removal of genes correlated with age, sex, or differential leukocyte count.

To filter out genes correlated to basic clinical features, we collected information on gender, age (years), white blood cells and lymphocyte counts for the NS samples presented in the Table below.

ID	01	34	36	40	02	13	05	17	29	11	16	28	08	20	41	56
Gender (1=F, -1=M)	1	-1	1	1	-1	-1	1	1	-1	-1	1	1	1	-1	-1	-1
AGE (yrs.)	7.06	1.23	5.99	12.83	20.92	3.18	16.21	5.66	19.01	36.16	3.01	6.46	4.21	1.85	4.56	1.77
WBC	8.41				9.12	13.7	10.7	8.11	8.67		14.8	6.16	6.78	10.3		
LY%	12.3				29.3	46.3	17.9	32.1	32.9		62.8	43.5	53.3	79.4		

For each detected gene, we calculated the Pearson correlation with each of the four clinical variables. Probes displaying a Pearson correlation higher than 0.5 with any of the clinical variables were removed from subsequent analyses, which left a total of 5605 probes employed for further analysis.

c. Log₂ ratio transformation

For each probe, the log₂ signal in each sample was converted into log₂ ratio against global average expression of that probe in all samples. To avoid distortions due to the different sample sizes (from $n = 5$ for *SHOC2* samples to $n = 21$ for controls), the global average was calculated by first averaging the log₂ signal within each group (CTRL, *PTPN11*, *SOS1* and *SHOC2*) and then by further averaging these four means. The log₂ ratio was then calculated by subtracting log₂ signal of the single sample from the global average.

II. Microarray data analysis

a. Selection of genes differentially expressed between controls and mutated groups.

To be defined as differential between controls and mutated groups, a probe Log_2 ratio signal had to display significance in three basic tests: (i) \log_2 ratio between the means in control and mutated group greater than 0.5 (positive or negative); (ii) independent samples, two-way T-test p-value lower than 0.01; (iii) signal-to-noise ratio greater than 0.5 (positive or negative), according to the formula described by Golub and colleagues (Science 286:531-537, 1999).

b. Montecarlo simulation for FDR estimation.

To estimate the False Discovery Rate, i.e. the fraction of false positives expected for the four signatures described in the main text, 2000 orthogonal random permutations of the samples were performed, whereby for each cycle of permutation the three statistical filters employed for genes selection were re-applied, recording the number of significant probes for each of the four signatures. For each signature, median and mean false positives were then compared with true positives as illustrated in Supp. Table S3.

c. Weighted average score for full leave-one-out classification analysis.

After removing a sample from the dataset and redefining the four signatures, the left-out sample was classified by a weighted average score, obtained by subtracting average \log_2 ratios of probes with higher signal in control samples from average \log_2 ratio of probes with higher signal in mutated samples.

III. Functional data mining

a. Functional annotation analysis

To define functional annotation keyword enrichment in the mutation-specific signatures, we uploaded the lists of Illumina probes belonging to the *PTPN11*, *SOS1* and *SHOC2* signatures on the David Ease web-based annotation tool (<http://david.abcc.ncifcrf.gov/>). Three types of lists were uploaded for each signature: (i) all probes, both up- and down-regulated in mutated samples; (ii) only probes up-regulated in mutated samples; (iii) only probes down-regulated in mutated samples. As a background list, we employed the 5605 probes passing filtering criteria mentioned in the Results section. Subsequently the various lists underwent “Functional Annotation Clustering” analysis, returning Benjamini corrected enrichment p-values for functional clusters. The output of this analysis was filtered to include only results with corrected p-values of less than 0.01.

b. Kinase Enrichment analysis

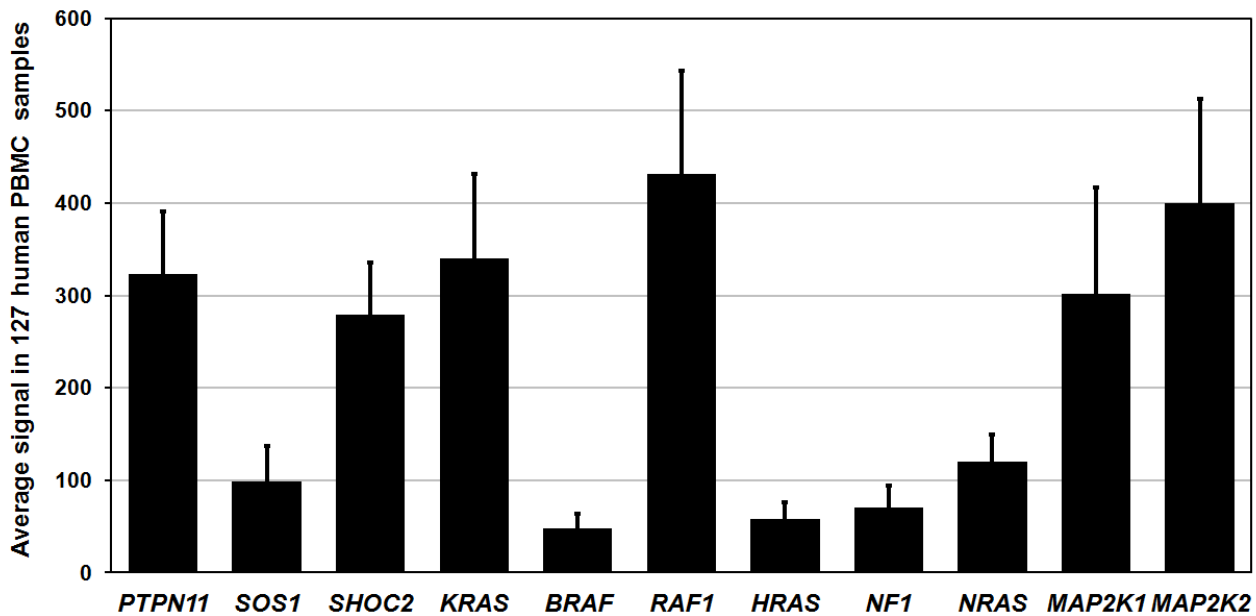
To identify substrates of kinases in the signatures, lists of gene symbols corresponding to Illumina probes of the *PTPN11*, *SOS1* and *SHOC2* signatures were uploaded on the web-based Kinase Enrichment Analysis tool (<http://amp.pharm.mssm.edu/lib/kea.jsp>). The output of this analysis was filtered to include only results with kinase enrichment p-values of less than 0.01.

c. Protein-protein interactions analysis

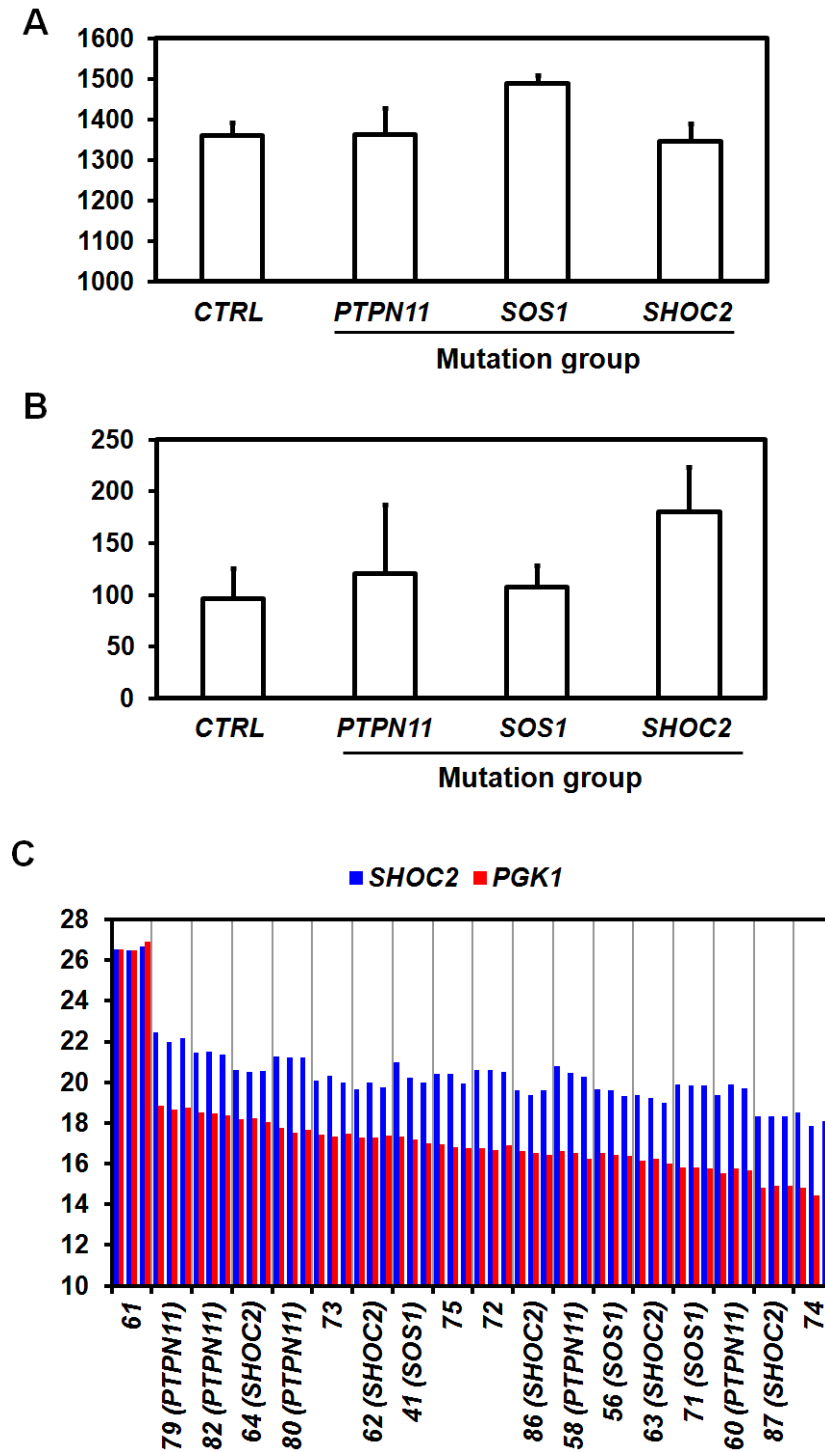
To check the signatures for enrichment in protein-protein interactions, we employed two web-based tools, Gather (<http://gather.genome.duke.edu/>) and Gene2Network (<http://actin.pharm.mssm.edu/genes2networks/>). The first employs data from two large-scale protein-protein interaction studies in humans, and the second integrates multiple small-scale, high-quality protein-protein interaction datasets. Lists of gene symbols corresponding to Illumina probes of the *PTPN11*, *SOS1* and *SHOC2* signatures were uploaded on the two websites and “in silico” protein-protein interaction analysis was performed. To achieve complete independence between the two analyses, Gene2Network analysis was conducted excluding the “Vidal and Stelzl” dataset, which is by default employed by Gather. Additional parameters of Gene2Network analysis were the following: (i) max path length threshold =2; (ii) significance cut-off =3; (iii) max interaction for reference=1; (iv) min reference per interaction=no filter.

d. Binding site analysis and transcriptional circuits

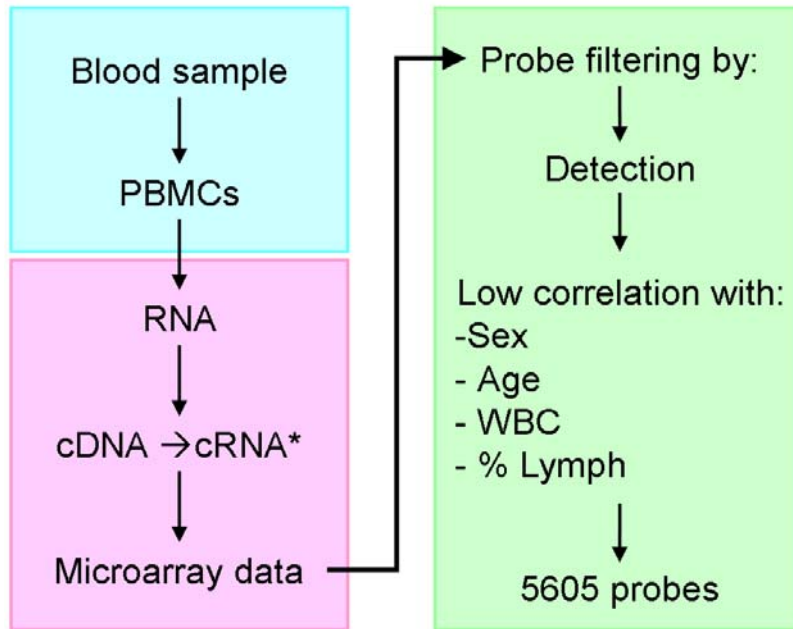
To analyze transcription factor activity, a curated, non-redundant list of transcription factors (TFs) was extracted from the JASPAR CORE database (<http://jaspar.genereg.net/>). This list of TFs was then filtered to maintain only those TFs with available binding site data in the Opossum tool (<http://www.cisreg.ca/cgi-bin/oPOSSUM/opossum>). Eleven of these TFs were found in one or more of the three signatures: *GFII* (*PTPN11* and *SOS1* signatures), *GABPA* (*SOS1* and *SHOC2* signatures), and nine TFs only in the *SHOC2* signature (*CEBPA*, *CREB1*, *ELK1*, *ELK4*, *MAX*, *NR3C1*, *SP1*, *STAT1* and *ZNF395*). For each of these eleven TFs, we verified, if the respective *PTPN11*, *SOS1* or *SHOC2* signature was enriched in genes containing one or more specific TF binding sites. To this aim, we employed the “Custom binding site analysis” of Opossum, uploading lists of gene symbols corresponding to Illumina probes of the *PTPN11*, *SOS1* or *SHOC2* signatures, subdivided in up-regulated and down-regulated in mutated samples. As a background list, we employed the 5605 probes passing filtering criteria mentioned in the Results section. The amount of upstream / downstream sequence was set to (2000/0) and Matrix match threshold to 80%. We considered significant Opossum Z-Scores greater than 5 and p-values lower than 0.05. Putative transcriptional circuits highlighted by Opossum and including a TF and its enriched targets in the same signature were consolidated by a complementary procedure, that involved for each given TF: (i) retrieval, using Opossum, of all genes containing binding sites for that TF (putative targets), in the 5605-gene background list and in the signature(s) containing the TF; (ii) hypergeometric distribution analysis of enrichment of putative target genes in the signature vs. background, with subsequent p-value calculation. Results of both analyses are shown in Supp. Table S5.

Supp. Figures

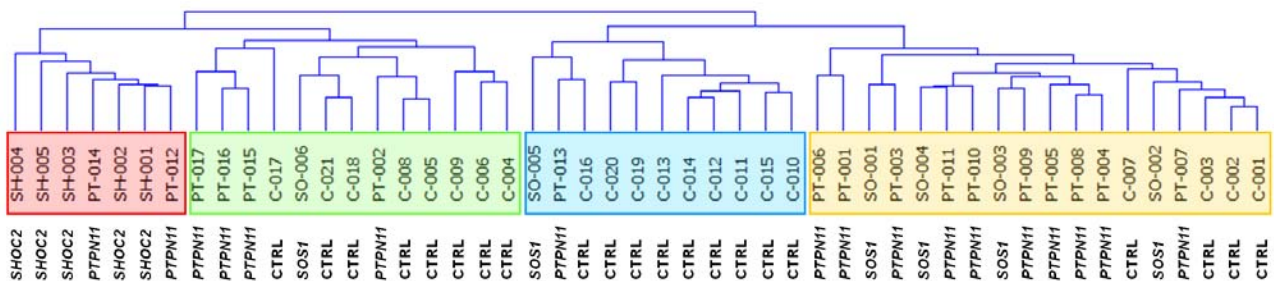
Supp. Figure S1. Expression levels in human PBMCs of RAS/MAPK pathway genes mutated in RASopathies. Histograms represent average expression signal in 127 human PBMC samples (Burczynski et al., *J Mol Diagn.* 2006). *RAF1*, *MAP2K1*, *MAP2K2*, *KRAS*, *SHOC2* and *PTPN11* genes show high level of expression, while *SOS1*, *NF1*, *HRAS* and *BRAF* present lower, but detectable expression values.



Supp. Figure S2. Expression levels in human PBMCs of *PTPN11*, *SOS1* and *SHOC2*. For *PTPN11* and *SOS1* (A, B), histograms represent average expression signal in our 49-sample human PBMC samples profiled with Illumina gene expression arrays. For *SHOC2*, quantitative realtime PCR triplicate Ct values are reported for *SHOC2* and the housekeeper *PGK1* in 18 PBMC samples chosen among controls, NS and NSL-LAH, as indicated.



Supp. Figure S3. Experimental workflow for PBMC purification, expression profiling, and data filtering. The workflow is subdivided in three main parts: blood processing (light blue), RNA extraction and gene expression profiling (pink), and data processing for gene filtering (light green).



Supp. Figure S4. Unsupervised cluster analysis. Hierarchical clustering of PBMC samples from: (i) 21 control subjects (C-001-021), (ii) 17 NS patients with a *PTPN11* mutation (PT-001-017), (iii) 6 NS patients with a *SOS1* mutation (SO-001-006), and (iv) 6 NS/LAH patients with the *SHOC2* c.4A>G mutation (SH-001-005). Four major transcriptional clusters emerge, two of which are clearly enriched in *SHOC2* samples and *PTPN11* + *SOS1* samples, respectively.

Supp. Tables

Supp. Table S1. Genotypes of NS and NS/LAH patients			
Patient ID	Gene	Nucleotide substitution	Amino-acid substitution
PT-001	<i>PTPN11</i>	c.785T>G	p.Leu262Arg
PT-002	<i>PTPN11</i>	c.1508G>A	p.Gly503Glu
PT-003	<i>PTPN11</i>	c.923A>G	p.Asn308Ser
PT-004	<i>PTPN11</i>	c.782T>A	p.Leu261His
PT-005	<i>PTPN11</i>	c.1507G>A	p.Gly503Arg
PT-006	<i>PTPN11</i>	c.782T>A	p.Leu261His
PT-007	<i>PTPN11</i>	c.1510A>G	p.Met504Val
PT-008	<i>PTPN11</i>	c.782T>A	p.Leu261His
PT-009	<i>PTPN11</i>	c.853T>A	p.Phe285Ile
PT-010	<i>PTPN11</i>	c.228G>C	p.Glu76Asp
PT-011	<i>PTPN11</i>	c.181G>A	p.Asp61Asn
PT-012	<i>PTPN11</i>	c.172A>G	p.Asn58Asp
PT-013	<i>PTPN11</i>	c.417G>T	p.Glu139Asp
PT-014	<i>PTPN11</i>	c.1510A>G	p.Met504Val
PT-015	<i>PTPN11</i>	c.922A>G	p.Asn308Asp
PT-016	<i>PTPN11</i>	c.172A>C	p.Asn58His
PT-017	<i>PTPN11</i>	c.188A>G	p.Tyr63Cys
SO-001	<i>SOS1</i>	c.755T>C	p.Ile252Thr

SO-002	<i>SOS1</i>	c.797C>A	p.Thr266Lys
SO-003	<i>SOS1</i>	c.806T>C	p.Met269Thr
SO-004	<i>SOS1</i>	c.806T>C	p.Met269Thr
SO-005	<i>SOS1</i>	c.1654A>G	p.Arg552Gly
SO-006	<i>SOS1</i>	c.1297G>A	p.Glu433Lys
SH-001	<i>SHOC2</i>	c.4A>G	p.Ser2Gly
SH-002	<i>SHOC2</i>	c.4A>G	p.Ser2Gly
SH-003	<i>SHOC2</i>	c.4A>G	p.Ser2Gly
SH-004	<i>SHOC2</i>	c.4A>G	p.Ser2Gly
SH-005	<i>SHOC2</i>	c.4A>G	p.Ser2Gly

GenBank reference sequences:

PTPN11: NM_002834.3; *SOS1*: NM_005633.3; *SHOC2*: NM_007373.3

Nucleotide numbering reflects cDNA numbering with +1 corresponding to the A of the ATG translation initiation codon in the reference sequence.

Supp. Table S2A. NS-NS/LAH signature (125 probes, 124 genes)					
Symbol	TargetID	Accession	L2R Disease/CTRL	ABS SNR Disease/CTRL	T-test p-value Disease vs Control
<i>NCF1</i>	ILMN_136961	NM_000265.1	1.321084166	0.554650871	0.00055653
<i>ECGF1</i>	ILMN_18760	NM_001953.2	1.139301768	0.56287464	0.00044382
<i>CGI-38</i>	ILMN_754	NM_015964.2	1.132573662	0.673556676	0.00002621
<i>FGL2</i>	ILMN_19861	NM_006682.1	1.070279843	0.57143162	0.00028665
<i>RAPGEF1</i>	ILMN_3184	NM_198679.1	0.98206944	0.561509994	0.00105147
<i>GRN</i>	ILMN_18655	NM_002087.2	0.964791405	0.568916029	0.00045024
<i>SASH1</i>	ILMN_22260	NM_015278.3	0.957600681	0.686162499	0.00002612
<i>RP2</i>	ILMN_28618	NM_006915.1	0.90480327	0.791543608	0.00000200
<i>TUBB6</i>	ILMN_26276	NM_032525.1	0.853006817	0.527954118	0.00057275
<i>SLC25A24</i>	ILMN_15753	NM_013386.2	0.837217818	0.860356608	0.00000062
<i>MTMR11</i>	ILMN_137079	NM_181873.1	0.808285699	0.655443175	0.00003297
<i>PFC</i>	ILMN_24742	NM_002621.1	0.791994208	0.504731573	0.00101265
<i>CSF1R</i>	ILMN_24980	NM_005211.2	0.766481286	0.566002268	0.00026247
<i>CYBB</i>	ILMN_13274	NM_000397.2	0.751730075	0.630439746	0.00010382
<i>WARS</i>	ILMN_25430	NM_213646.1	0.749824997	0.533953615	0.00061560
<i>C9orf72</i>	ILMN_9580	NM_145005.3	0.730448006	0.576732623	0.00021012
<i>LOC339745</i>	ILMN_21364	NM_001001664.1	0.725297986	0.847062003	0.00000035
<i>MSR1</i>	ILMN_16779	NM_002445.2	0.709933122	0.527357886	0.00089285
<i>WDR33</i>	ILMN_6704	NM_001006623.1	0.69789313	0.557560131	0.00076950
<i>RB1</i>	ILMN_4636	NM_000321.1	0.688171798	0.609960242	0.00009345
<i>ADAM9</i>	ILMN_922	NM_003816.2	0.673507261	0.559339882	0.00103667
<i>P2RX1</i>	ILMN_1134	NM_002558.2	0.667173036	0.582373311	0.00018210
<i>TBC1D9</i>	ILMN_25527	NM_015130.1	0.661083435	0.533359533	0.00052298
<i>MCTP1</i>	ILMN_2499	NM_001002796.1	0.657310261	0.552273564	0.00037623

VMO1	ILMN_18899	NM_182566.1	0.643428254	0.539386685	0.00102405
EMR1	ILMN_12984	NM_001974.3	0.633183529	0.557693009	0.00036571
PRDX3	ILMN_13029	NM_014098.2	0.626217596	0.616369174	0.00020419
MTSS1	ILMN_7083	NM_014751.2	0.624826288	0.717204372	0.00000989
PECAM1	ILMN_7862	NM_000442.2	0.623438681	0.532080738	0.00072899
SSFA2	ILMN_4525	NM_006751.3	0.605800152	0.545007535	0.00050355
CTDSP1	ILMN_13739	NM_182642.1	0.60301904	0.540296413	0.00043850
MLL3	ILMN_24027	NM_021230.1	0.595752173	0.50418616	0.00094331
ATP6V0A1	ILMN_138088	NM_005177.2	0.56619738	0.618763559	0.00007647
CST6	ILMN_20022	NM_001323.2	0.565753462	0.534088911	0.00194061
DPYSL2	ILMN_9671	NM_001386.4	0.565577205	0.517590614	0.00081030
LOC51136	ILMN_27239	NM_016125.2	0.55785882	0.524110701	0.00070125
SYK	ILMN_8126	NM_003177.3	0.557306354	0.508150751	0.00100071
RNPEP	ILMN_22895	NM_020216.3	0.55610558	0.598623524	0.00016502
ATP6V1A	ILMN_30226	NM_001690.2	0.550949418	0.573954134	0.00026355
MLL3	ILMN_14020	NM_170606.1	0.549391752	0.548625483	0.00041986
QKI	ILMN_4124	NM_206854.1	0.545749725	0.53359302	0.00053097
HLA-DMB	ILMN_2252	NM_002118.3	0.541171517	0.741714584	0.00000443
UTRN	ILMN_15375	NM_007124.1	0.527936565	0.626744433	0.00008486
AGPAT2	ILMN_6967	NM_006412.3	0.526089017	0.537277823	0.00107744
SLC36A1	ILMN_22384	NM_078483.2	0.525363533	0.579074576	0.00018789
WDFY2	ILMN_14243	NM_052950.2	0.51738607	0.949471314	0.00000014
SNX2	ILMN_4948	NM_003100.2	0.511419645	0.645587156	0.00004356
POGZ	ILMN_14081	NM_145796.2	0.509196883	0.614652705	0.00034779
CBR3	ILMN_8256	NM_001236.3	-0.501548372	0.576774225	0.00031293
ACOT4	ILMN_5812	NM_152331.2	-0.506300623	0.501282601	0.00145993
ZNF545	ILMN_15084	NM_133466.1	-0.50676991	0.666747897	0.00004604
ARHGAP10	ILMN_24582	NM_024605.3	-0.507674999	0.658071995	0.00003942
ATXN7L2	ILMN_6796	NM_153340.2	-0.509429145	0.506309516	0.00116308

PIP5K2A	ILMN_6957	NM_005028.3	-0.511620973	0.766986504	0.00000303
BRF2	ILMN_2966	NM_018310.2	-0.513168419	0.573735878	0.00022956
LAX1	ILMN_29004	NM_017773.2	-0.520792925	0.715075083	0.00001090
PTGER4	ILMN_13328	NM_000958.2	-0.532099462	0.562488851	0.00039290
C21orf57	ILMN_21121	NM_058181.1	-0.532614088	0.557683419	0.00039802
CCDC58	ILMN_27140	NM_001017928.2	-0.54006179	0.626422203	0.00008076
ALDOC	ILMN_15767	NM_005165.2	-0.551121983	0.599294042	0.00013341
SDCCAG33	ILMN_138968	NM_005786.3	-0.55159881	0.635549907	0.00012881
FAM84B	ILMN_7137	NM_174911.3	-0.555973314	0.66943369	0.00004156
SLC25A23	ILMN_5925	NM_024103.2	-0.564123021	0.656348275	0.00011161
NPDC1	ILMN_5190	NM_015392.2	-0.566353596	0.51503047	0.00078580
FYN	ILMN_5919	NM_002037.3	-0.570318002	0.644773866	0.00004925
RHOF	ILMN_1762	NM_019034.2	-0.588562031	0.512472435	0.00087113
LCMT2	ILMN_7283	NM_014793.3	-0.59408272	0.676237692	0.00004917
LPHN1	ILMN_12017	NM_014921.3	-0.595977927	0.555516456	0.00060169
ACACB	ILMN_3318	NM_001093.2	-0.60148083	0.647708036	0.00004546
PIM2	ILMN_27932	NM_006875.2	-0.606699437	0.745720347	0.00000688
RASA3	ILMN_19501	NM_007368.2	-0.609728339	0.51866888	0.00084582
CD2	ILMN_6738	NM_001767.2	-0.613600011	0.646691342	0.00006305
MGC17330	ILMN_15026	NM_052880.3	-0.615102387	0.554114679	0.00124969
PITPNC1	ILMN_12660	NM_181671.1	-0.617188651	0.763012992	0.00000348
IL18RAP	ILMN_16084	NM_003853.2	-0.618785163	0.595867225	0.00013053
ABHD14B	ILMN_24812	NM_032750.1	-0.620384302	0.753596144	0.00000525
TNFSF9	ILMN_18030	NM_003811.2	-0.63645865	0.504502625	0.00123920
GFI1	ILMN_30079	NM_005263.2	-0.638218337	0.810063077	0.00000130
ZBTB16	ILMN_11903	NM_006006.4	-0.640383593	0.523059876	0.00068922
STAT4	ILMN_8937	NM_003151.2	-0.642277435	0.741700081	0.00000514
SMPD1	ILMN_8257	NM_001007593.1	-0.648648924	0.538651833	0.00047990
SFXN1	ILMN_16398	NM_022754.4	-0.654170933	0.523626325	0.00080819

TCEA3	ILMN_27218	NM_003196.1	-0.657704996	0.592066255	0.00024669
CD8A	ILMN_2358	NM_001768.4	-0.660860793	0.594696025	0.00014620
PRR7	ILMN_17178	NM_030567.2	-0.665158852	0.536832382	0.00057470
C10orf35	ILMN_13661	NM_145306.1	-0.669357423	0.58713647	0.00016046
PLCG1	ILMN_3773	NM_002660.2	-0.669392435	0.584297133	0.00019981
PAFAH2	ILMN_3410	NM_000437.2	-0.684827426	0.892782604	0.00000055
CACNA2D2	ILMN_15989	NM_001005505.1	-0.686912394	0.613426228	0.00010529
ITK	ILMN_23317	NM_005546.3	-0.690033069	0.704824671	0.00002724
MGAT4A	ILMN_139237	NM_012214.1	-0.701476401	0.588282515	0.00018484
TGFBR3	ILMN_22620	NM_003243.2	-0.708248557	0.697370522	0.00002515
CD3E	ILMN_24240	NM_000733.2	-0.711671939	0.629082883	0.00008905
TKTL1	ILMN_23315	NM_012253.2	-0.727727687	0.605461651	0.00018975
HOXB2	ILMN_137588	NM_002145.2	-0.739430194	0.551939309	0.00033964
ICOS	ILMN_9996	NM_012092.2	-0.745024028	0.513242042	0.00083515
CTLA4	ILMN_138103	NM_005214.2	-0.750478694	0.934673244	0.00000008
PTPRM	ILMN_19957	NM_002845.2	-0.752842383	0.636816195	0.00006099
FHIT	ILMN_15082	NM_002012.1	-0.766674862	0.578811154	0.00046674
TSEN54	ILMN_8569	NM_207346.1	-0.776875745	0.599435131	0.00011930
PDZD4	ILMN_3986	NM_032512.2	-0.777079223	0.603890033	0.00011783
ELA1	ILMN_24603	NM_001971.4	-0.778277484	0.725031145	0.00000665
CD5	ILMN_29547	NM_014207.2	-0.780011452	0.501385904	0.00123187
FLT3LG	ILMN_4754	NM_001459.2	-0.786977344	0.672271482	0.00002435
PPP2R2B	ILMN_1007	NM_181676.1	-0.790685672	0.615737601	0.00012564
TARP	ILMN_25716	NM_001003799.1	-0.793277751	0.64274719	0.00006665
BCL9L	ILMN_27555	NM_182557.1	-0.808789234	0.554059637	0.00032290
SOCS1	ILMN_3038	NM_003745.1	-0.825203535	0.502522482	0.00114042
CCDC65	ILMN_22276	NM_033124.2	-0.826315503	0.575384317	0.00020769
BAMBI	ILMN_8469	NM_012342.2	-0.828451265	0.502263163	0.00097632
PLEKHB1	ILMN_2859	NM_021200.1	-0.840020952	0.839629344	0.00000093

<i>C6orf105</i>	ILMN_10287	NM_032744.1	-0.840919329	0.664422571	0.00003018
<i>KSP37</i>	ILMN_16684	NM_031950.2	-0.842708345	0.681807509	0.00002272
<i>GZMH</i>	ILMN_10239	NM_033423.2	-0.845233571	0.527411198	0.00086217
<i>ADRB2</i>	ILMN_2022	NM_000024.3	-0.86626972	0.847589262	0.00000084
<i>MAL</i>	ILMN_3411	NM_002371.2	-0.877719549	0.925808311	0.00000027
<i>CITED4</i>	ILMN_15271	NM_133467.2	-0.880279922	0.765096915	0.00000907
<i>PTGDS</i>	ILMN_19248	NM_000954.5	-0.885287037	0.505533305	0.00172082
<i>AKR1C3</i>	ILMN_11871	NM_003739.4	-0.93749951	0.627865296	0.00008072
<i>H2AFX</i>	ILMN_23585	NM_002105.2	-0.942415472	0.813438146	0.00000080
<i>FEZ1</i>	ILMN_28992	NM_005103.3	-1.016084362	0.763414541	0.00000304
<i>ZNF683</i>	ILMN_2307	NM_173574.1	-1.017805442	0.562264358	0.00032947
<i>IL23A</i>	ILMN_20797	NM_016584.2	-1.054966924	0.588923763	0.00017724
<i>GPLY</i>	ILMN_13145	NM_012483.1	-1.061532661	0.821905939	0.00000159
<i>BATF</i>	ILMN_3307	NM_006399.2	-1.12180425	0.519569456	0.00075257

Supp. Table S2B. <i>PTPN11</i> signature (225 probes, 223 genes)					
Symbol	TargetID	Accession	L2R Disease/CTRL	ABS SNR Disease/CTRL	T-test p- value Disease vs Control
<i>HCA112</i>	ILMN_24990	NM_018487.2	1.640572025	0.46899836	0.00045873
<i>EMP1</i>	ILMN_25097	NM_001423.1	1.573890651	0.30682888	0.00314480
<i>TNFRSF12A</i>	ILMN_11654	NM_016639.1	1.471344009	0.327517025	0.00230098
<i>RAPGEF1</i>	ILMN_3184	NM_198679.1	1.350848899	0.561509994	0.00002477
<i>CGI-38</i>	ILMN_754	NM_015964.2	1.26429885	0.673556676	0.00001957
<i>EGR2</i>	ILMN_10721	NM_000399.2	1.25189554	0.216246616	0.00078760
<i>ECGF1</i>	ILMN_18760	NM_001953.2	1.227244131	0.56287464	0.00025184
<i>VASH1</i>	ILMN_4905	NM_014909.2	1.187049881	0.436937865	0.00009345
<i>NCF1</i>	ILMN_136961	NM_000265.1	1.183170469	0.554650871	0.00215972
<i>C1QA</i>	ILMN_138176	NM_015991.1	1.174230265	0.460228509	0.00038154
<i>LILRA5</i>	ILMN_13562	NM_181986.1	1.157891702	0.495486116	0.00025816
<i>FGL2</i>	ILMN_19861	NM_006682.1	1.117058744	0.57143162	0.00016718
<i>HBEGF</i>	ILMN_13020	NM_001945.1	1.103141795	0.251961923	0.00140005
<i>OSCAR</i>	ILMN_3784	NM_130771.2	1.064976797	0.450026773	0.00017363
<i>PTRF</i>	ILMN_22301	NM_012232.2	1.049816639	0.426525135	0.00301579
<i>CD300LB</i>	ILMN_22665	NM_174892.1	1.029237831	0.417482967	0.00014046
<i>NP</i>	ILMN_18063	NM_000270.1	1.004914876	0.450327209	0.00137933
<i>BTBD14A</i>	ILMN_10561	NM_144653.3	0.977900069	0.497255735	0.00000093
<i>SERPINE1</i>	ILMN_6244	NM_000602.1	0.976345257	0.398119074	0.00471708
<i>GRN</i>	ILMN_18655	NM_002087.2	0.971879492	0.568916029	0.00009629
<i>SASH1</i>	ILMN_22260	NM_015278.3	0.968150053	0.686162499	0.00002487
<i>TUBB6</i>	ILMN_26276	NM_032525.1	0.957340349	0.527954118	0.00134300

WARS	ILMN_25430	NM_213646.1	0.928591613	0.533953615	0.00019458
RP2	ILMN_28618	NM_006915.1	0.917224311	0.791543608	0.00000945
C9orf72	ILMN_9580	NM_145005.3	0.913617277	0.576732623	0.00002725
ALDH3B1	ILMN_26797	NM_001030010.1	0.901692076	0.482841759	0.00018900
ADAM9	ILMN_922	NM_003816.2	0.893136784	0.559339882	0.00015938
LOC401233	ILMN_17894	NM_001013680.1	0.892889063	0.394707704	0.00145884
MTMR11	ILMN_137079	NM_181873.1	0.883969064	0.655443175	0.00006313
MSR1	ILMN_16779	NM_002445.2	0.883563599	0.527357886	0.00094744
CSF1R	ILMN_24980	NM_005211.2	0.864191294	0.566002268	0.00038381
PFC	ILMN_24742	NM_002621.1	0.845059664	0.504731573	0.00056782
UNQ3033	ILMN_29051	NM_198481.1	0.837564175	0.313324062	0.00308231
CYBB	ILMN_13274	NM_000397.2	0.832261527	0.630439746	0.00001732
P2RX1	ILMN_1134	NM_002558.2	0.830035069	0.582373311	0.00009607
WDR33	ILMN_6704	NM_001006623.1	0.816852502	0.557560131	0.00038434
CST6	ILMN_20022	NM_001323.2	0.807324519	0.534088911	0.00007649
ZNF503	ILMN_2048	NM_032772.3	0.805381467	0.432169646	0.00091319
LIMS1	ILMN_11207	NM_004987.3	0.800923571	0.336151079	0.00198880
VMO1	ILMN_18899	NM_182566.1	0.785342972	0.539386685	0.00027633
ANKDD1A	ILMN_6117	NM_182703.2	0.781657454	0.356691847	0.00079619
CAMK1	ILMN_21373	NM_003656.3	0.759144587	0.492115675	0.00061577
APLP2	ILMN_19935	NM_001642.1	0.752003991	0.455656335	0.00215605
ZDHHC1	ILMN_29630	NM_013304.1	0.751814563	0.488268233	0.00134316
SLC25A24	ILMN_15753	NM_013386.2	0.74510769	0.860356608	0.00000472
IL1RAP	ILMN_8626	NM_134470.2	0.728393523	0.398730293	0.00112381
IGSF6	ILMN_7979	NM_005849.1	0.722354415	0.404621481	0.00184215
MLL3	ILMN_24027	NM_021230.1	0.707646583	0.50418616	0.00089322
SSFA2	ILMN_4525	NM_006751.3	0.704568057	0.545007535	0.00009856
LOC339745	ILMN_21364	NM_001001664.1	0.700391983	0.847062003	0.00001529
QKI	ILMN_4124	NM_206854.1	0.691646151	0.53359302	0.00016360

PLEKHQ1	ILMN_25713	NM_025201.3	0.68445947	0.381013076	0.00203275
TGM2	ILMN_8134	NM_198951.1	0.682066115	0.417835214	0.00021976
ARRDC4	ILMN_11014	NM_183376.1	0.672533706	0.417237908	0.00456098
FGR	ILMN_21930	NM_005248.1	0.669375621	0.466533807	0.00161083
RGS12	ILMN_15717	NM_002926.2	0.667379422	0.456153285	0.00063938
RNPEP	ILMN_22895	NM_020216.3	0.666137061	0.598623524	0.00000576
SH2D3C	ILMN_8703	NM_170600.1	0.665808955	0.403944385	0.00567878
SYK	ILMN_8126	NM_003177.3	0.6626873	0.508150751	0.00016720
ATP6V0A1	ILMN_138088	NM_005177.2	0.652003802	0.618763559	0.00017335
KIAA0513	ILMN_21473	NM_014732.2	0.646910539	0.482625046	0.00007375
POGZ	ILMN_14081	NM_145796.2	0.638240534	0.614652705	0.00002428
MCTP1	ILMN_2499	NM_001002796.1	0.631772234	0.552273564	0.00088773
GBGT1	ILMN_18833	NM_021996.3	0.621287266	0.423734301	0.00332459
EMR1	ILMN_12984	NM_001974.3	0.619543816	0.557693009	0.00157518
CTSS	ILMN_13149	NM_004079.3	0.61862623	0.483715093	0.00125229
RB1	ILMN_4636	NM_000321.1	0.613674119	0.609960242	0.00277011
DAPK1	ILMN_138506	NM_004938.1	0.611697486	0.442825305	0.00275467
PECAM1	ILMN_7862	NM_000442.2	0.60917983	0.532080738	0.00082461
DPYSL2	ILMN_9671	NM_001386.4	0.598054115	0.517590614	0.00082555
BCL2L2	ILMN_9171	NM_004050.2	0.595693337	0.618322489	0.00002477
NAPSA	ILMN_12115	NM_004851.1	0.589618584	0.280978366	0.00392265
PFKFB2	ILMN_12195	NM_006212.2	0.58781744	0.527917721	0.00022229
AP1S2	ILMN_3812	NM_003916.3	0.586783759	0.488969433	0.00197668
SIPA1L1	ILMN_3802	NM_015556.1	0.586288021	0.240962801	0.00379876
HSBP1	ILMN_3025	NM_001537.2	0.583504819	1.028093735	0.00000000
GM2A	ILMN_8836	NM_000405.3	0.581321147	0.336407175	0.00381796
MLL3	ILMN_14020	NM_170606.1	0.581109919	0.548625483	0.00087683
PARP14	ILMN_28517	NM_017554.1	0.576341503	0.437357265	0.00125215
SLC36A1	ILMN_22384	NM_078483.2	0.569195789	0.579074576	0.00078930

<i>IL15</i>	ILMN_16803	NM_172174.1	0.564822943	0.431587521	0.00418995
<i>CTDSP1</i>	ILMN_13739	NM_182642.1	0.561848041	0.540296413	0.00535669
<i>ATP6V1A</i>	ILMN_30226	NM_001690.2	0.55307366	0.573954134	0.00042831
<i>MGC33692</i>	ILMN_17332	NM_001001794.1	0.551155723	0.452553135	0.00013551
<i>PRDX3</i>	ILMN_13029	NM_014098.2	0.549182004	0.616369174	0.00026009
<i>PHCA</i>	ILMN_3836	NM_018367.3	0.545298912	0.513985519	0.00048863
<i>GNS</i>	ILMN_6937	NM_002076.2	0.54005597	0.702188774	0.00000296
<i>UTRN</i>	ILMN_15375	NM_007124.1	0.537147127	0.626744433	0.00057966
<i>FAM65A</i>	ILMN_17641	NM_024519.2	0.533570053	0.520527473	0.00007999
<i>MTSS1</i>	ILMN_7083	NM_014751.2	0.528607408	0.717204372	0.00086115
<i>WDR41</i>	ILMN_28575	NM_018268.2	0.526931841	0.420502405	0.00262646
<i>PSRC2</i>	ILMN_139272	NM_144982.3	0.522449121	0.532229639	0.00143090
<i>WDFY2</i>	ILMN_14243	NM_052950.2	0.522160857	0.949471314	0.00000051
<i>HLA-DMB</i>	ILMN_2252	NM_002118.3	0.521835548	0.741714584	0.00015061
<i>LYL1</i>	ILMN_18317	NM_005583.3	0.510433643	0.450602912	0.00217954
<i>BCKDK</i>	ILMN_13829	NM_005881.1	0.506453376	0.42032352	0.00081655
<i>RAPH1</i>	ILMN_7647	NM_025252.3	0.501989973	0.498454201	0.00010081
<i>STAT5A</i>	ILMN_10520	NM_003152.2	-0.500670735	0.435370699	0.00157763
<i>PHF20</i>	ILMN_20893	NM_016436.3	-0.503987875	0.498824041	0.00341753
<i>GALM</i>	ILMN_10698	NM_138801.1	-0.504181622	0.359664965	0.00069713
<i>F8A1</i>	ILMN_23293	NM_012151.3	-0.507798082	0.491539841	0.00083689
<i>NCK2</i>	ILMN_8369	NM_003581.2	-0.51108628	0.586738229	0.00008988
<i>NUCB2</i>	ILMN_23510	NM_005013.1	-0.511382323	0.40932896	0.00212353
<i>C21orf57</i>	ILMN_21121	NM_058181.1	-0.512831996	0.557683419	0.00314669
<i>TERF2</i>	ILMN_21134	NM_005652.2	-0.513847741	0.330032666	0.00011668
<i>ALDOC</i>	ILMN_15767	NM_005165.2	-0.516607321	0.599294042	0.00077976
<i>PIP5K2A</i>	ILMN_6957	NM_005028.3	-0.517743119	0.766986504	0.00000226
<i>CCNB1IP1</i>	ILMN_16420	NM_021178.2	-0.518250647	0.8164184	0.00000075
<i>MLLT11</i>	ILMN_21397	NM_006818.3	-0.518730151	0.456654026	0.00009982

DNAJB9	ILMN_14354	NM_012328.1	-0.520897603	0.409938084	0.00286409
IL32	ILMN_3781	NM_001012632.1	-0.522542869	0.44597114	0.00295954
C10orf58	ILMN_17906	NM_032333.2	-0.529379401	0.490332648	0.00003745
ACTR8	ILMN_13548	NM_022899.3	-0.529602637	0.57196257	0.00006576
FTS	ILMN_9667	NM_022476.2	-0.537860477	0.34369181	0.00399328
C10orf104	ILMN_7723	NM_173473.2	-0.538052773	0.406663671	0.00136886
FLJ38451	ILMN_19229	NM_175872.3	-0.538937665	0.495254186	0.00114409
ZNF545	ILMN_15084	NM_133466.1	-0.550666864	0.666747897	0.00002844
FYN	ILMN_5919	NM_002037.3	-0.551294472	0.644773866	0.00023300
C9orf30	ILMN_15668	NM_080655.1	-0.551461916	0.564346926	0.00012317
PTPN4	ILMN_29562	NM_002830.2	-0.552003607	0.518687009	0.00005066
LOC81558	ILMN_29450	NM_030802.2	-0.555552873	0.386435279	0.00176926
ARHGAP10	ILMN_24582	NM_024605.3	-0.555899324	0.658071995	0.00024664
RNF144	ILMN_15740	NM_014746.2	-0.558532274	0.398131551	0.00229456
PRAF1	ILMN_2978	NM_022490.1	-0.558972433	0.701645712	0.00001024
NDFIP2	ILMN_23410	NM_019080.1	-0.564231612	0.273391931	0.00514154
HAPLN3	ILMN_19816	NM_178232.2	-0.565399962	0.479939961	0.00441729
CCDC58	ILMN_27140	NM_001017928.2	-0.568494148	0.626422203	0.00010018
TPST2	ILMN_13248	NM_001008566.1	-0.568686202	0.407049282	0.00051135
RAB7L1	ILMN_27192	NM_003929.1	-0.576039588	0.826731839	0.00000008
LAX1	ILMN_29004	NM_017773.2	-0.576809737	0.715075083	0.00000556
TUBE1	ILMN_7563	NM_016262.3	-0.579367228	0.372958665	0.00033726
SFXN1	ILMN_16398	NM_022754.4	-0.58091346	0.523626325	0.00185844
ACACB	ILMN_3318	NM_001093.2	-0.582496141	0.647708036	0.00095975
TBCC	ILMN_25053	NM_003192.1	-0.585662135	0.47986098	0.00022676
CBR3	ILMN_8256	NM_001236.3	-0.587778543	0.576774225	0.00006243
SATB1	ILMN_6836	NM_002971.2	-0.59024576	0.491733379	0.00029065
MGC17330	ILMN_15026	NM_052880.3	-0.592236188	0.554114679	0.00105096
VIPR1	ILMN_27565	NM_004624.2	-0.593070326	0.451776741	0.00062580

<i>NPDC1</i>	ILMN_5190	NM_015392.2	-0.593493903	0.51503047	0.00186892
<i>AGMAT</i>	ILMN_24467	NM_024758.3	-0.595396271	0.460747866	0.00275354
<i>ZNF184</i>	ILMN_22535	NM_007149.1	-0.597689887	0.368618408	0.00486717
<i>PRR7</i>	ILMN_17178	NM_030567.2	-0.604413556	0.536832382	0.00286203
<i>SMPD1</i>	ILMN_8257	NM_001007593.1	-0.604949755	0.538651833	0.00161182
<i>BRF2</i>	ILMN_2966	NM_018310.2	-0.606067504	0.573735878	0.00010726
<i>PTGER4</i>	ILMN_13328	NM_000958.2	-0.606450332	0.562488851	0.00001934
<i>FEZ1</i>	ILMN_419	NM_022549.2	-0.609292102	0.457577683	0.00682154
<i>SDCCAG33</i>	ILMN_138968	NM_005786.3	-0.614368954	0.635549907	0.00001713
<i>DPP4</i>	ILMN_20248	NM_001935.3	-0.618288342	0.45091084	0.00176525
<i>PNRC1</i>	ILMN_24710	NM_006813.1	-0.628831373	0.489596307	0.00111420
<i>FLJ20152</i>	ILMN_139301	NM_019000.2	-0.634230056	0.456511434	0.00109561
<i>MAN1C1</i>	ILMN_12633	NM_020379.1	-0.635341768	0.48916714	0.00048381
<i>SOX8</i>	ILMN_30180	NM_014587.2	-0.638937302	0.457483381	0.00089229
<i>CACNA2D2</i>	ILMN_15989	NM_001005505.1	-0.647755763	0.613426228	0.00134567
<i>DNAJB1</i>	ILMN_19740	NM_006145.1	-0.647877454	0.474267591	0.00101160
<i>TXK</i>	ILMN_19719	NM_003328.1	-0.649402059	0.355423427	0.00273011
<i>PKIA</i>	ILMN_4343	NM_006823.2	-0.651907566	0.461906271	0.00001972
<i>ZBTB16</i>	ILMN_11903	NM_006006.4	-0.654391514	0.523059876	0.00196632
<i>HSPA8</i>	ILMN_14829	NM_153201.1	-0.659647107	0.627352179	0.00000291
<i>LEF1</i>	ILMN_30265	NM_016269.2	-0.664492864	0.374513301	0.00142701
<i>ABHD14B</i>	ILMN_24812	NM_032750.1	-0.667660274	0.753596144	0.00000440
<i>RPL14</i>	ILMN_138835	NM_003973.2	-0.671818838	0.42344653	0.00348419
<i>PITPNC1</i>	ILMN_12660	NM_181671.1	-0.675741411	0.763012992	0.00000200
<i>LPHN1</i>	ILMN_12017	NM_014921.3	-0.680224127	0.555516456	0.00003588
<i>MGAT4A</i>	ILMN_139237	NM_012214.1	-0.686439815	0.588282515	0.00020394
<i>GIMAP7</i>	ILMN_2211	NM_153236.3	-0.688384375	0.309418302	0.00108814
<i>GFI1</i>	ILMN_30079	NM_005263.2	-0.688429664	0.810063077	0.00000287
<i>STAT4</i>	ILMN_8937	NM_003151.2	-0.69335148	0.741700081	0.00001454

TGFBR3	ILMN_22620	NM_003243.2	-0.695968502	0.697370522	0.00024601
NAP1L5	ILMN_5355	NM_153757.1	-0.696281078	0.482970013	0.00118408
TRAT1	ILMN_24557	NM_016388.2	-0.701865172	0.431978638	0.00022583
PIM2	ILMN_27932	NM_006875.2	-0.705939469	0.745720347	0.00000049
MGC15763	ILMN_137229	NM_138381.1	-0.707467198	0.452639641	0.00160886
LCMT2	ILMN_7283	NM_014793.3	-0.708548025	0.676237692	0.00000198
PLCG1	ILMN_3773	NM_002660.2	-0.713682121	0.584297133	0.00056091
IL18RAP	ILMN_16084	NM_003853.2	-0.715943068	0.595867225	0.00016263
CD5	ILMN_29547	NM_014207.2	-0.719666211	0.501385904	0.00212931
FAM84B	ILMN_7137	NM_174911.3	-0.72095523	0.66943369	0.00000022
NCR3	ILMN_19702	NM_147130.1	-0.724076246	0.486364877	0.00400738
TSEN54	ILMN_8569	NM_207346.1	-0.727498633	0.599435131	0.00170913
FLT3LG	ILMN_4754	NM_001459.2	-0.727594431	0.672271482	0.00038973
TKTL1	ILMN_23315	NM_012253.2	-0.727847582	0.605461651	0.00069483
CTLA4	ILMN_138103	NM_005214.2	-0.738130072	0.934673244	0.00000139
SOCS1	ILMN_3038	NM_003745.1	-0.739455522	0.502522482	0.00313209
ELA1	ILMN_24603	NM_001971.4	-0.744576877	0.725031145	0.00029205
CD8A	ILMN_2358	NM_001768.4	-0.744678001	0.594696025	0.00026942
ITK	ILMN_23317	NM_005546.3	-0.745007112	0.704824671	0.00008908
TCEA3	ILMN_27218	NM_003196.1	-0.750750252	0.592066255	0.00023655
ICOS	ILMN_9996	NM_012092.2	-0.75237042	0.513242042	0.00046944
KLRG1	ILMN_12613	NM_005810.3	-0.774039085	0.254607132	0.00294923
AXIN2	ILMN_26857	NM_004655.2	-0.805082477	0.436443044	0.00158082
BCL9L	ILMN_27555	NM_182557.1	-0.807656854	0.554059637	0.00141276
CD248	ILMN_25766	NM_020404.2	-0.812370151	0.463357687	0.00238338
FHIT	ILMN_15082	NM_002012.1	-0.820857634	0.578811154	0.00019084
C10orf35	ILMN_13661	NM_145306.1	-0.828257411	0.58713647	0.00010833
GPR171	ILMN_21194	NM_013308.2	-0.832290597	0.331305728	0.00290693
PTPRM	ILMN_19957	NM_002845.2	-0.832917155	0.636816195	0.00008494

CD2	ILMN_6738	NM_001767.2	-0.840438326	0.646691342	0.00000117
PDZD4	ILMN_3986	NM_032512.2	-0.86138807	0.603890033	0.00013770
BAMBI	ILMN_8469	NM_012342.2	-0.871810097	0.502263163	0.00294778
PLEKHB1	ILMN_2859	NM_021200.1	-0.878172562	0.839629344	0.00000692
HOXB2	ILMN_137588	NM_002145.2	-0.884877446	0.551939309	0.00030257
PAFAH2	ILMN_3410	NM_000437.2	-0.8943644	0.892782604	0.00000000
MAL	ILMN_3411	NM_002371.2	-0.895921565	0.925808311	0.00000271
SERPINE2	ILMN_1946	NM_006216.2	-0.904483902	0.45419718	0.00008303
C6orf105	ILMN_10287	NM_032744.1	-0.909531884	0.664422571	0.00002912
CD3E	ILMN_24240	NM_000733.2	-0.93235239	0.629082883	0.00000614
CD69	ILMN_13491	NM_001781.1	-0.942527846	0.457624176	0.00064713
PTGDS	ILMN_19248	NM_000954.5	-0.946494867	0.505533305	0.00175037
GIMAP5	ILMN_27010	NM_018384.3	-0.953022963	0.419538221	0.00201391
HSPA1B	ILMN_25549	NM_005346.3	-0.953328978	0.212241703	0.00269290
PPP2R2B	ILMN_1007	NM_181676.1	-0.965173716	0.615737601	0.00006002
EOMES	ILMN_19998	NM_005442.2	-0.968337892	0.470291119	0.00028010
H2AFX	ILMN_23585	NM_002105.2	-0.97692086	0.813438146	0.00000330
GZMH	ILMN_10239	NM_033423.2	-0.98083047	0.527411198	0.00060255
CITED4	ILMN_15271	NM_133467.2	-0.984893442	0.765096915	0.00000350
CCDC65	ILMN_22276	NM_033124.2	-0.990896676	0.575384317	0.00024815
KSP37	ILMN_16684	NM_031950.2	-0.999642264	0.681807509	0.00001688
ZNF683	ILMN_2307	NM_173574.1	-1.032728562	0.562264358	0.00193259
TARP	ILMN_25716	NM_001003799.1	-1.051625612	0.64274719	0.00000020
ADRB2	ILMN_2022	NM_000024.3	-1.055053118	0.847589262	0.00000011
FEZ1	ILMN_28992	NM_005103.3	-1.127136623	0.763414541	0.00001994
GNLY	ILMN_13145	NM_012483.1	-1.148412672	0.821905939	0.00000141
BATF	ILMN_3307	NM_006399.2	-1.174102973	0.519569456	0.00332655
AKR1C3	ILMN_11871	NM_003739.4	-1.189643568	0.627865296	0.00000337
IL23A	ILMN_20797	NM_016584.2	-1.232537149	0.588923763	0.00009415

**Supp. Table S2C. *SOS1* signature
(75 probes, 73 genes)**

Symbol	TargetID	Accession	L2R Disease/CTRL	ABS SNR Disease/CTRL	T-test p-value Disease vs Control
<i>RALGPS2</i>	ILMN_701	NM_018037.1	0.887552664	0.448616072	0.00161622
<i>PHF20L1</i>	ILMN_25591	NM_032205.2	0.886871298	0.381517999	0.00038379
<i>KLHL24</i>	ILMN_26914	NM_017644.3	0.789824755	0.505242446	0.00002312
<i>EIF2AK3</i>	ILMN_26832	NM_004836.3	0.785432084	0.046890124	0.00339153
<i>PTBP2</i>	ILMN_556	NM_021190.1	0.779793993	0.183024136	0.00664570
<i>MTMR6</i>	ILMN_29967	NM_004685.2	0.777000277	0.232481964	0.00177702
<i>ZNF529</i>	ILMN_24517	NM_020951.1	0.768697038	0.137110056	0.00000472
<i>CHD7</i>	ILMN_29669	NM_017780.2	0.763311195	0.053506036	0.00053082
<i>WDR33</i>	ILMN_6704	NM_001006623.1	0.762698764	0.557560131	0.00884851
<i>KIAA0776</i>	ILMN_26630	NM_015323.2	0.732036421	0.464464474	0.00038782
<i>SFRS12</i>	ILMN_8967	NM_139168.1	0.731518633	0.184442106	0.00041407
<i>RUNDC2A</i>	ILMN_705	NM_032167.1	0.721018309	0.284472895	0.00366201
<i>GABPA</i>	ILMN_28392	NM_002040.2	0.704789114	0.592919139	0.00187652
<i>RICTOR</i>	ILMN_2994	NM_152756.3	0.691392413	0.120805648	0.00227054
<i>MTSS1</i>	ILMN_7083	NM_014751.2	0.682974828	0.717204372	0.00112968
<i>IFT57</i>	ILMN_21390	NM_018010.2	0.675190082	0.229633029	0.00070011
<i>ADAM9</i>	ILMN_922	NM_003816.2	0.666180851	0.559339882	0.00378554
<i>FAM76B</i>	ILMN_22478	NM_144664.3	0.66576136	0.23771187	0.00010042
<i>N4BP2</i>	ILMN_7118	NM_018177.2	0.655425286	0.033654735	0.00172032
<i>RRM2B</i>	ILMN_11053	NM_015713.3	0.646273865	0.346860048	0.00848695
<i>PFKFB2</i>	ILMN_12195	NM_006212.2	0.617236289	0.527917721	0.00735058
<i>ZNF238</i>	ILMN_5128	NM_205768.1	0.610480963	0.060455926	0.00135583
<i>KLHL2</i>	ILMN_24870	NM_007246.2	0.604165553	0.60291658	0.00161532

YTHDC2	ILMN_23803	NM_022828.2	0.59555144	0.496064684	0.00614677
POGZ	ILMN_14081	NM_145796.2	0.583319511	0.614652705	0.00282129
GMFB	ILMN_14672	NM_004124.2	0.581168767	0.529244679	0.00157471
OTUD6B	ILMN_22397	NM_016023.2	0.56912336	0.304742464	0.00025795
REV3L	ILMN_17913	NM_002912.1	0.554148355	0.157091571	0.00791183
APRIN	ILMN_20213	NM_015032.1	0.554085012	0.273969544	0.00094423
FBXL3	ILMN_4998	NM_012158.1	0.551660242	0.218317691	0.00013307
STIL	ILMN_13235	NM_003035.1	0.545234399	0.287286475	0.00068769
TMEM41B	ILMN_8205	NM_015012.1	0.522333116	0.303516321	0.00269601
CST6	ILMN_20022	NM_001323.2	0.511932826	0.534088911	0.00921454
GOLT1B	ILMN_5124	NM_016072.2	0.510560422	0.202116925	0.00346801
FUT8	ILMN_9754	NM_178154.1	0.505064035	0.08981082	0.00698557
NKTR	ILMN_23378	NM_005385.3	0.50434282	0.294652457	0.00811464
C6orf125	ILMN_21424	NM_032340.1	-0.511492388	0.101057435	0.00762676
MRPL34	ILMN_5839	NM_023937.2	-0.511956713	0.348464173	0.00321254
HSPA8	ILMN_14829	NM_153201.1	-0.512721673	0.627352179	0.00056648
CD2	ILMN_6738	NM_001767.2	-0.522321422	0.646691342	0.00917697
DOK2	ILMN_137779	NM_201349.1	-0.523050722	0.190787501	0.00805286
STIP1	ILMN_28761	NM_006819.1	-0.525327079	0.124331572	0.00095539
OAZ2	ILMN_28141	NM_002537.1	-0.53824496	0.092826187	0.00356120
LOC84661	ILMN_18534	NM_032574.2	-0.548863028	0.216935995	0.00012449
ACD	ILMN_5907	NM_022914.1	-0.553579904	0.602229848	0.00137820
LAX1	ILMN_29004	NM_017773.2	-0.55474973	0.715075083	0.00188353
IL27RA	ILMN_9407	NM_004843.2	-0.562860221	0.10261292	0.00878351
ARHGAP10	ILMN_24582	NM_024605.3	-0.563466431	0.658071995	0.00152804
TNFSF12	ILMN_24599	NM_003809.2	-0.56770749	0.022913821	0.00272199
PRUNE	ILMN_27601	NM_021222.1	-0.586301157	0.552904262	0.00028104
CTLA4	ILMN_138103	NM_005214.2	-0.597555801	0.934673244	0.00243881
LOC340061	ILMN_18797	NM_198282.1	-0.598431803	0.147162724	0.00052177

MAF	ILMN_15072	NM_005360.3	-0.62329548	0.565299503	0.00302416
PIP5K2A	ILMN_6957	NM_005028.3	-0.62350074	0.766986504	0.00205711
PSTPIP1	ILMN_28119	NM_003978.2	-0.631863194	0.361537535	0.00139096
ACACB	ILMN_3318	NM_001093.2	-0.6348178	0.647708036	0.00745327
TRAFD1	ILMN_21539	NM_006700.1	-0.637847522	0.124969592	0.00050092
F8A1	ILMN_23293	NM_012151.3	-0.654659866	0.491539841	0.00294327
CD300A	ILMN_20704	NM_007261.2	-0.655556789	0.004475384	0.00771681
GFI1	ILMN_30079	NM_005263.2	-0.657538415	0.810063077	0.00106955
DNAJB6	ILMN_7651	NM_058246.3	-0.657540414	0.136315949	0.00094113
CD244	ILMN_7885	NM_016382.2	-0.678423036	0.064757497	0.00103571
GALM	ILMN_10698	NM_138801.1	-0.681834064	0.359664965	0.00008995
TPST2	ILMN_13248	NM_001008566.1	-0.769125088	0.407049282	0.00239127
ASCL2	ILMN_18051	NM_005170.2	-0.772775101	0.106077588	0.00417781
GPLY	ILMN_13145	NM_012483.1	-0.875999817	0.821905939	0.00579909
LOC442535	ILMN_16993	NM_001013738.1	-0.889737645	0.275652692	0.00467506
GLRX	ILMN_22606	NM_002064.1	-0.890483179	0.052715708	0.00059598
APOBEC3G	ILMN_15884	NM_021822.1	-0.893364866	0.380714828	0.00376115
ADRB2	ILMN_2022	NM_000024.3	-0.915472812	0.847589262	0.00010301
ELA1	ILMN_24603	NM_001971.4	-0.916899993	0.725031145	0.00159014
TARP	ILMN_25716	NM_001003799.1	-1.030821564	0.64274719	0.00032237
EOMES	ILMN_19998	NM_005442.2	-1.172206716	0.470291119	0.00070222

**Supp. Table S2D. *SHOC2* signature
(1407 probes, 1394 genes)**

Symbol	TargetID	Accession	L2R Disease/CTRL	ABS SNR Disease/CTRL	T-test p- value Disease vs Control
<i>P2RY13</i>	ILMN_9350	NM_176894.1	3.230795638	2.030205509	0.00001198
<i>NCF1</i>	ILMN_136961	NM_000265.1	3.004866306	2.360147597	0.00000080
<i>MS4A6A</i>	ILMN_2009	NM_022349.2	2.944993248	1.909673758	0.00004979
<i>PDK4</i>	ILMN_23211	NM_002612.2	2.917049119	1.36453749	0.00000847
<i>SLC25A20</i>	ILMN_29792	NM_000387.3	2.777594697	1.901681385	0.00000428
<i>TRIM5</i>	ILMN_760	NM_033034.1	2.561102611	1.686441216	0.00002655
<i>CD79B</i>	ILMN_139125	NM_000626.1	2.55830839	1.080894212	0.00048045
<i>TNFSF10</i>	ILMN_22827	NM_003810.2	2.430831207	1.68313466	0.00000525
<i>LTF</i>	ILMN_20816	NM_002343.2	2.415277282	1.137858007	0.00008957
<i>MARCH1</i>	ILMN_30212	NM_017923.2	2.400620779	1.559775716	0.00003376
<i>PSMB8</i>	ILMN_12139	NM_148919.3	2.372593273	1.806981162	0.00002239
<i>HSPA1A</i>	ILMN_6623	NM_005345.4	2.346566122	1.635865024	0.00041219
<i>FGL2</i>	ILMN_19861	NM_006682.1	2.268977886	1.920709435	0.00000936
<i>VNN1</i>	ILMN_14011	NM_004666.1	2.257784258	1.193513682	0.00016922
<i>ARHGAP30</i>	ILMN_15952	NM_001025598.1	2.255861969	1.586025349	0.00002175
<i>GCA</i>	ILMN_25626	NM_012198.2	2.197907204	1.703770495	0.00007464
<i>OAS1</i>	ILMN_2958	NM_016816.2	2.160455366	1.034754352	0.00009705
<i>SNAP23</i>	ILMN_29211	NM_003825.2	2.159463633	2.375349613	0.00000160
<i>NFE2</i>	ILMN_5749	NM_006163.1	2.125813345	1.404932233	0.00024891
<i>FLJ33641</i>	ILMN_2666	NM_152687.1	2.117646439	1.355499921	0.00005480
<i>CD1D</i>	ILMN_926	NM_001766.2	2.115842557	1.398556308	0.00035065
<i>CLEC12A</i>	ILMN_24114	NM_201625.1	2.106645106	1.864408376	0.00000426
<i>ECGF1</i>	ILMN_18760	NM_001953.2	2.044651326	1.166814773	0.00008155

<i>GRN</i>	ILMN_18655	NM_002087.2	2.03746384	1.669620931	0.00000234
<i>TLR5</i>	ILMN_18399	NM_003268.3	2.030218218	1.458223711	0.00023624
<i>C4orf18</i>	ILMN_657	NM_016613.4	2.002013059	1.060512331	0.00086947
<i>TSCOT</i>	ILMN_10869	NM_033051.2	1.977658192	1.470729682	0.00000801
<i>FZD2</i>	ILMN_12499	NM_001466.2	1.970187777	1.39558521	0.00004423
<i>AIM2</i>	ILMN_10231	NM_004833.1	1.952499983	1.452545483	0.00021779
<i>IDH1</i>	ILMN_14217	NM_005896.2	1.939463119	2.996203368	0.00000001
<i>CX3CR1</i>	ILMN_8593	NM_001337.3	1.935125349	1.317200409	0.00084901
<i>GIMAP4</i>	ILMN_26906	NM_018326.2	1.891877366	1.236698351	0.00013957
<i>SASH1</i>	ILMN_22260	NM_015278.3	1.869888573	1.605883404	0.00000252
<i>OPN3</i>	ILMN_26329	NM_001030012.1	1.869768692	1.815957077	0.00000269
<i>MS4A6A</i>	ILMN_1889	NM_152851.1	1.85318862	1.571238152	0.00006337
<i>EVA1</i>	ILMN_23335	NM_005797.2	1.845981029	1.278843117	0.00143771
<i>NYD-SP21</i>	ILMN_8529	NM_032597.2	1.83140234	1.405564479	0.00001489
<i>CACNA2D3</i>	ILMN_1908	NM_018398.2	1.829719711	1.168758985	0.00099030
<i>MS4A3</i>	ILMN_12025	NM_006138.4	1.81966477	1.178663506	0.00024345
<i>MOSC1</i>	ILMN_12517	NM_022746.2	1.80056635	1.08435644	0.00199068
<i>ARFIP1</i>	ILMN_15855	NM_014447.2	1.797399489	1.367232965	0.00009893
<i>RNASE6</i>	ILMN_14848	NM_005615.2	1.790511733	1.572275665	0.00000278
<i>C14orf106</i>	ILMN_5745	NM_018353.3	1.777748886	1.422897874	0.00001448
<i>CEBPA</i>	ILMN_27029	NM_004364.2	1.714680868	1.690296094	0.00004032
<i>GIYD2</i>	ILMN_25461	NM_178044.1	1.710230986	1.724065013	0.00000013
<i>SEPX1</i>	ILMN_7309	NM_016332.2	1.693931767	1.463290318	0.00024722
<i>MOSPD2</i>	ILMN_28307	NM_152581.1	1.686127391	1.195339716	0.00096150
<i>CPNE8</i>	ILMN_20089	NM_153634.2	1.676253065	1.272978087	0.00015784
<i>CGI-38</i>	ILMN_754	NM_015964.2	1.670439728	1.419306976	0.00022466
<i>FAM26B</i>	ILMN_19907	NM_015916.3	1.667037179	1.502766599	0.00009401
<i>CD1A</i>	ILMN_21799	NM_001763.1	1.654779216	1.541206072	0.00002028
<i>ASGR1</i>	ILMN_17580	NM_001671.2	1.642663186	1.127094292	0.00205181
<i>SLIC1</i>	ILMN_511	NM_182854.1	1.636866235	2.299482343	0.00000086
<i>RTN1</i>	ILMN_5569	NM_206857.1	1.630076214	0.889419362	0.00527996

<i>APAF1</i>	ILMN_886	NM_181869.1	1.618807555	1.254949416	0.00092721
<i>M6PR</i>	ILMN_1682	NM_002355.2	1.618699365	1.266933529	0.00292618
<i>CD33</i>	ILMN_24441	NM_001772.2	1.617540554	1.279741937	0.00041582
<i>SLC25A24</i>	ILMN_15753	NM_013386.2	1.615632189	2.428121735	0.00000001
<i>CDK5RAP3</i>	ILMN_11403	NM_176095.1	1.615563142	1.296025136	0.00057345
<i>C10orf26</i>	ILMN_28562	NM_017787.3	1.595433956	1.558311538	0.00006121
<i>FN5</i>	ILMN_9654	NM_020179.1	1.593991929	1.803744426	0.00000975
<i>CYSLTR1</i>	ILMN_6966	NM_006639.2	1.584931332	1.485848853	0.00001350
<i>GPR177</i>	ILMN_2573	NM_001002292.1	1.562854266	1.082985034	0.00014765
<i>NPL</i>	ILMN_25291	NM_030769.1	1.562676534	1.43823841	0.00002591
<i>VPS35</i>	ILMN_21093	NM_018206.3	1.558138081	1.255233608	0.00041318
<i>CARD9</i>	ILMN_22365	NM_052813.2	1.55061094	0.937118385	0.00505249
<i>CASP1</i>	ILMN_10621	NM_033294.2	1.544866623	1.590869349	0.00000234
<i>SAMD9L</i>	ILMN_27133	NM_152703.2	1.536758823	1.039672893	0.00453992
<i>PRDX3</i>	ILMN_13029	NM_014098.2	1.530538083	2.621818437	0.00000001
<i>LILRA5</i>	ILMN_13562	NM_181986.1	1.528860757	0.798056866	0.00158893
<i>OSCAR</i>	ILMN_3784	NM_130771.2	1.518568683	1.005731609	0.00099353
<i>PFC</i>	ILMN_24742	NM_002621.1	1.501891159	1.020923486	0.00072327
<i>PARP9</i>	ILMN_12926	NM_031458.1	1.501029114	1.241277617	0.00003846
<i>SNX27</i>	ILMN_17828	NM_030918.5	1.498350472	1.290904726	0.00039031
<i>PRAM1</i>	ILMN_14804	NM_032152.3	1.495831227	0.983108985	0.00085923
<i>STK3</i>	ILMN_26935	NM_006281.1	1.487965795	1.169490975	0.00043491
<i>AP1S2</i>	ILMN_3812	NM_003916.3	1.481318788	1.497126236	0.00001992
<i>LACTB2</i>	ILMN_18082	NM_016027.1	1.478527427	0.919008169	0.00279394
<i>TUBB</i>	ILMN_23399	NM_178014.2	1.468843269	1.281248771	0.00012956
<i>CAMK1</i>	ILMN_21373	NM_003656.3	1.465942141	1.328031684	0.00004837
<i>TLR10</i>	ILMN_6615	NM_030956.2	1.465748435	0.652237676	0.00819716
<i>RAB37</i>	ILMN_8592	NM_001006638.1	1.459212098	1.176481542	0.00100970
<i>CYBRD1</i>	ILMN_4649	NM_024843.2	1.458125986	1.268588969	0.00052254
<i>ANP32C</i>	ILMN_11992	NM_012403.1	1.453611232	0.954665537	0.00066597
<i>NAGK</i>	ILMN_4544	NM_017567.2	1.451197882	1.58243748	0.00000213

<i>TMEM55A</i>	ILMN_7212	NM_018710.1	1.444584606	0.878598912	0.00771716
<i>CEPT1</i>	ILMN_14637	NM_006090.3	1.444163158	2.02435451	0.00000063
<i>PECAM1</i>	ILMN_7862	NM_000442.2	1.438004735	1.83143722	0.00000478
<i>CD74</i>	ILMN_21963	NM_001025159.1	1.434686147	0.972479846	0.00394973
<i>LOC201895</i>	ILMN_6140	NM_174921.1	1.431649983	1.617044642	0.00005280
<i>WDR68</i>	ILMN_17716	NM_005828.2	1.429422312	1.385745393	0.00028199
<i>METTL3</i>	ILMN_13907	NM_019852.2	1.42548153	0.91222508	0.00603552
<i>LSM12</i>	ILMN_1510	NM_152344.1	1.421361357	1.494939354	0.00046771
<i>RAB10</i>	ILMN_21971	NM_016131.2	1.417506897	1.724175804	0.00004435
<i>RAB27A</i>	ILMN_26122	NM_004580.3	1.415857452	2.439981834	0.00000007
<i>PAK1</i>	ILMN_3895	NM_002576.3	1.415428263	1.303528125	0.00000166
<i>CYBB</i>	ILMN_13274	NM_000397.2	1.408817731	1.339757578	0.00001259
<i>GLCE</i>	ILMN_19408	NM_015554.1	1.404828092	1.161063267	0.00063160
<i>DAPK1</i>	ILMN_138506	NM_004938.1	1.383669259	1.109733929	0.00016452
<i>S100Z</i>	ILMN_16143	NM_130772.1	1.382269138	0.991665875	0.00036217
<i>STX7</i>	ILMN_23974	NM_003569.1	1.38222876	1.653208921	0.00002049
<i>RNF135</i>	ILMN_26639	NM_032322.3	1.38208812	1.298243602	0.00018183
<i>GOLPH3L</i>	ILMN_29707	NM_018178.3	1.370986633	1.36453176	0.00063959
<i>TST</i>	ILMN_24453	NM_003312.4	1.369690016	1.136440543	0.00095333
<i>SNX10</i>	ILMN_21992	NM_013322.2	1.367198902	1.206295261	0.00011743
<i>ZNF537</i>	ILMN_19320	NM_020856.1	1.364283648	0.983156622	0.00049673
<i>DPYD</i>	ILMN_19002	NM_000110.2	1.360575553	1.221184847	0.00020880
<i>THOC3</i>	ILMN_17969	NM_032361.1	1.337370852	1.296516098	0.00010001
<i>JAK2</i>	ILMN_12566	NM_004972.2	1.336837147	1.157759338	0.00107764
<i>CBR4</i>	ILMN_15505	NM_032783.3	1.331554916	0.924736371	0.00572523
<i>C6orf150</i>	ILMN_18812	NM_138441.1	1.328798487	1.273871485	0.00029292
<i>CNN2</i>	ILMN_26898	NM_004368.2	1.328259599	0.862321574	0.00400179
<i>FGR</i>	ILMN_21930	NM_005248.1	1.327363076	1.39145794	0.00019357
<i>CHN2</i>	ILMN_16218	NM_004067.1	1.324958877	1.614430996	0.00000029
<i>AMICA1</i>	ILMN_14597	NM_153206.1	1.319782187	1.08065251	0.00325652
<i>ZFP106</i>	ILMN_6305	NM_022473.1	1.319592806	1.607493451	0.00000090

<i>IGSF6</i>	ILMN_7979	NM_005849.1	1.319368591	1.188636367	0.00037148
<i>AP1S1</i>	ILMN_21653	NM_001283.2	1.318735553	1.576995383	0.00001459
<i>MCTP1</i>	ILMN_2499	NM_001002796.1	1.315723721	1.202471994	0.00013997
<i>ALDH3B1</i>	ILMN_26797	NM_001030010.1	1.312159263	0.893300708	0.00194706
<i>NFE2L3</i>	ILMN_21009	NM_004289.5	1.308752905	1.300277296	0.00001069
<i>MDM4</i>	ILMN_137381	NM_002393.1	1.297256916	1.26641401	0.00155630
<i>RP2</i>	ILMN_28618	NM_006915.1	1.294332883	1.424661662	0.00003362
<i>SLC35A1</i>	ILMN_23284	NM_006416.2	1.290268239	1.163704098	0.00047859
<i>KIAA1598</i>	ILMN_4741	NM_018330.3	1.288926615	0.849412435	0.00370318
<i>IL10RB</i>	ILMN_26097	NM_000628.3	1.287949998	1.719776558	0.00000093
<i>HNRPK</i>	ILMN_16515	NM_031263.1	1.282519412	1.010295796	0.00375171
<i>NUDT16</i>	ILMN_16023	NM_152395.1	1.281298901	1.154766657	0.00007469
<i>SLC35B3</i>	ILMN_20545	NM_015948.2	1.278877271	1.051639038	0.00421060
<i>LAT2</i>	ILMN_137018	NM_022040.2	1.275195973	1.42216122	0.00000064
<i>ZNF467</i>	ILMN_11856	NM_207336.1	1.270946259	0.848454305	0.00395545
<i>SIRPB1</i>	ILMN_12074	NM_006065.1	1.270200218	1.037567054	0.00175406
<i>TUBA3</i>	ILMN_1089	NM_006009.2	1.267592173	1.335001342	0.00049465
<i>IMPA2</i>	ILMN_19881	NM_014214.1	1.265450116	1.022773847	0.00125011
<i>FLJ11151</i>	ILMN_19186	NM_018340.1	1.261665971	0.765786817	0.00229595
<i>ZDHHC1</i>	ILMN_29630	NM_013304.1	1.261345131	1.08082457	0.00052442
<i>MLKL</i>	ILMN_25241	NM_152649.1	1.253941489	1.285259718	0.00022319
<i>SLC35A5</i>	ILMN_26894	NM_017945.2	1.252447978	1.715944373	0.00001005
<i>CRLF3</i>	ILMN_22668	NM_015986.2	1.248375429	1.206829585	0.00060933
<i>LOC387921</i>	ILMN_1273	NM_001017370.1	1.244008484	1.120913984	0.00296565
<i>PPP1CA</i>	ILMN_26836	NM_002708.3	1.243778007	1.055486121	0.00011791
<i>SH2D3C</i>	ILMN_8703	NM_170600.1	1.243559889	1.020589358	0.00398947
<i>AGPAT2</i>	ILMN_6967	NM_006412.3	1.241156729	1.437884834	0.00000131
<i>PYCARD</i>	ILMN_1146	NM_145183.1	1.238338965	1.182704229	0.00014653
<i>OXR1</i>	ILMN_16599	NM_181354.3	1.233515739	0.943498189	0.00535975
<i>LOC90693</i>	ILMN_24365	NM_138771.2	1.228511696	1.070906703	0.00065741
<i>EMR1</i>	ILMN_12984	NM_001974.3	1.228478331	1.205910733	0.00011219

<i>ATG7</i>	ILMN_17242	NM_006395.1	1.226054413	1.111371355	0.00154238
<i>HSD17B4</i>	ILMN_23623	NM_000414.1	1.224568967	1.201685613	0.00127922
<i>APLP2</i>	ILMN_19935	NM_001642.1	1.221058814	0.783961377	0.00495608
<i>LYST</i>	ILMN_22965	NM_000081.2	1.220189239	0.990799094	0.00387086
<i>FKBP1A</i>	ILMN_29213	NM_054014.1	1.216668016	1.266978955	0.00058410
<i>TCHP</i>	ILMN_2569	NM_032300.2	1.214228384	0.967657406	0.00841717
<i>PTPN6</i>	ILMN_9886	NM_080549.2	1.213176953	1.147626146	0.00039216
<i>ABHD3</i>	ILMN_4359	NM_138340.3	1.21305899	1.376526741	0.00032576
<i>HS1BP3</i>	ILMN_1874	NM_022460.3	1.210718089	1.58016919	0.00000566
<i>YIPF4</i>	ILMN_16255	NM_032312.2	1.209690086	1.346340866	0.00002704
<i>MTMR11</i>	ILMN_137079	NM_181873.1	1.202420707	1.348571747	0.00095883
<i>TPARL</i>	ILMN_13352	NM_018475.2	1.200728921	1.062854741	0.00112553
<i>TRIM5</i>	ILMN_29177	NM_033092.1	1.19730344	2.098332255	0.00000187
<i>CSF1R</i>	ILMN_24980	NM_005211.2	1.193143878	1.081173199	0.00499259
<i>SLC44A1</i>	ILMN_22168	NM_022109.2	1.191671935	1.6856574	0.00002035
<i>PCMT1</i>	ILMN_26580	NM_005389.1	1.19084514	1.252373441	0.00023097
<i>C5orf14</i>	ILMN_16829	NM_024715.2	1.190668971	1.20283815	0.00007608
<i>GIT2</i>	ILMN_14647	NM_139201.1	1.190219346	2.052595042	0.00000291
<i>KIAA0513</i>	ILMN_21473	NM_014732.2	1.174748258	1.266650575	0.00002434
<i>FAF1</i>	ILMN_25532	NM_007051.2	1.174568781	1.118849274	0.00281882
<i>TSPAN3</i>	ILMN_10474	NM_005724.4	1.168225827	0.729580845	0.00438404
<i>TFCP2</i>	ILMN_22607	NM_005653.3	1.167647033	1.658661194	0.00005819
<i>TMLHE</i>	ILMN_29460	NM_018196.1	1.16485678	2.051181476	0.00000234
<i>SDHA</i>	ILMN_22058	NM_004168.1	1.161938606	1.022608707	0.00073498
<i>C14orf147</i>	ILMN_22701	NM_138288.2	1.160650505	1.112768537	0.00023392
<i>ATP6V1A</i>	ILMN_30226	NM_001690.2	1.15746526	1.754474554	0.00001328
<i>LTA4H</i>	ILMN_10760	NM_000895.1	1.153598722	1.390108277	0.00003130
<i>GIMAP2</i>	ILMN_20526	NM_015660.2	1.149577817	0.965671268	0.00193203
<i>ME2</i>	ILMN_2202	NM_002396.3	1.147878625	1.509287926	0.00002005
<i>GLB1</i>	ILMN_23626	NM_000404.1	1.146797283	1.690013295	0.00000041
<i>KIAA0859</i>	ILMN_17670	NM_015935.4	1.144598554	0.837769761	0.00626361

HHEX	ILMN_137681	NM_002729.2	1.141884003	0.693529229	0.00647935
IL15	ILMN_16803	NM_172174.1	1.139875458	0.999399656	0.00054676
NUPL2	ILMN_2154	NM_007342.1	1.139731191	1.168744344	0.00024463
ACADM	ILMN_16589	NM_000016.2	1.13890795	0.924374337	0.00767478
DHRS4	ILMN_10152	NM_021004.2	1.137404903	1.634207884	0.00000856
GLRX	ILMN_22606	NM_002064.1	1.133988741	1.803719876	0.00005402
HIATL1	ILMN_445	NM_032558.1	1.128469227	1.556990239	0.00000072
STAT1	ILMN_29640	NM_007315.2	1.128402116	1.08223707	0.00124515
RB1	ILMN_4636	NM_000321.1	1.124836729	1.187181876	0.00086606
BTK	ILMN_28021	NM_000061.1	1.122372599	1.306551293	0.00018635
GBGT1	ILMN_18833	NM_021996.3	1.120301613	1.09684158	0.00144302
MDFIC	ILMN_21649	NM_199072.2	1.120203591	1.15768588	0.00176315
EVI2B	ILMN_26505	NM_006495.2	1.114183272	1.318566703	0.00003204
ATP6V1D	ILMN_26737	NM_015994.2	1.113501319	2.043668244	0.00000211
TRAPPC6B	ILMN_28066	NM_177452.2	1.113453002	1.012610594	0.00117111
DYNC1I2	ILMN_26959	NM_001378.1	1.113242907	1.315746836	0.00011227
CAT	ILMN_13962	NM_001752.2	1.110401051	1.241457245	0.00015781
SAP18	ILMN_27996	NM_005870.3	1.110157199	1.287921816	0.00045564
RASSF4	ILMN_1013	NM_178145.1	1.106395735	0.702632647	0.00971813
TIPRL	ILMN_13476	NM_152902.3	1.105926761	0.735464056	0.00753054
GNAQ	ILMN_18320	NM_002072.2	1.102538482	1.09049864	0.00052488
GART	ILMN_19282	NM_175085.1	1.100182823	1.860993741	0.00000013
RNUT1	ILMN_3859	NM_005701.2	1.098669993	1.252489255	0.00000760
RSHL2	ILMN_20992	NM_031924.3	1.098121903	1.201616713	0.00061853
STAT1	ILMN_11054	NM_139266.1	1.092967271	1.242374651	0.00019968
LOC147804	ILMN_772	NM_001010856.1	1.09060459	0.93550762	0.00192963
GBP1	ILMN_28413	NM_002053.1	1.088077859	0.818098264	0.00455937
P2RY5	ILMN_1003	NM_005767.3	1.084060495	0.944354401	0.00168605
TSNAX	ILMN_9331	NM_005999.2	1.083748338	0.920206882	0.00344845
MSRB2	ILMN_1402	NM_012228.2	1.082512282	1.138598039	0.00026016
MAX	ILMN_1660	NM_197957.2	1.080956724	1.359650229	0.00089655

<i>DHRS4L2</i>	ILMN_18916	NM_198083.1	1.0803122	1.833092933	0.00000279
<i>CD300A</i>	ILMN_20704	NM_007261.2	1.077905816	1.233438261	0.00011805
<i>HPS3</i>	ILMN_27156	NM_032383.3	1.077756305	1.166700056	0.00026715
<i>Kua-UEV</i>	ILMN_20084	NM_199203.1	1.077210942	0.890045394	0.00418034
<i>VRK2</i>	ILMN_12895	NM_006296.3	1.071093578	1.273308121	0.00006664
<i>PIGF</i>	ILMN_5303	NM_173074.1	1.069955594	1.32315317	0.00196465
<i>KIAA0907</i>	ILMN_6810	NM_014949.2	1.068392034	0.773879851	0.00546443
<i>ITGA4</i>	ILMN_20825	NM_000885.4	1.064564534	1.296599118	0.00066087
<i>C14orf100</i>	ILMN_2292	NM_016475.2	1.062074722	1.549919473	0.00005950
<i>C20orf55</i>	ILMN_7928	NM_031424.3	1.061601137	1.584276472	0.00005688
<i>FLJ30655</i>	ILMN_19208	NM_144643.1	1.060282183	0.876173172	0.00111608
<i>PEX11B</i>	ILMN_20603	NM_003846.1	1.06008193	1.153357146	0.00010047
<i>RTN3</i>	ILMN_20331	NM_006054.2	1.057527171	1.028960785	0.00040536
<i>TRPM4</i>	ILMN_23519	NM_017636.2	1.05591347	0.961545232	0.00029359
<i>RHOT1</i>	ILMN_7051	NM_001033568.1	1.053669109	1.180698251	0.00005482
<i>STX10</i>	ILMN_14838	NM_003765.1	1.052249524	1.128504094	0.00001413
<i>COMMD10</i>	ILMN_12276	NM_016144.2	1.050382398	1.495031129	0.00001106
<i>CD1C</i>	ILMN_25152	NM_001765.1	1.048258496	0.887735273	0.00455867
<i>CTSS</i>	ILMN_13149	NM_004079.3	1.045734735	0.82615845	0.00252149
<i>WARS</i>	ILMN_25430	NM_213646.1	1.04496961	1.189056087	0.00237587
<i>KCNK6</i>	ILMN_26070	NM_004823.1	1.044519702	1.771355806	0.00000007
<i>RGS19</i>	ILMN_137691	NM_005873.1	1.043344803	1.22908987	0.00190992
<i>TRADD</i>	ILMN_27933	NM_003789.2	1.04251768	1.262244624	0.00001350
<i>CTDSP1</i>	ILMN_13739	NM_182642.1	1.041515241	0.971166874	0.00278989
<i>CHCHD4</i>	ILMN_27470	NM_144636.1	1.040667368	1.271820439	0.00115294
<i>DPYSL2</i>	ILMN_9671	NM_001386.4	1.040441672	1.184566634	0.00043079
<i>OSBPL11</i>	ILMN_21883	NM_022776.3	1.040366673	0.902785221	0.00280335
<i>PPID</i>	ILMN_7536	NM_005038.2	1.040245336	0.920803978	0.00114088
<i>KLRG1</i>	ILMN_12613	NM_005810.3	1.031994693	0.951340998	0.00551552
<i>TNRC5</i>	ILMN_25587	NM_006586.2	1.031678935	1.226161091	0.00013477
<i>C1orf25</i>	ILMN_6315	NM_030934.3	1.029790058	0.922590503	0.00311092

<i>BTN3A3</i>	ILMN_20620	NM_006994.3	1.02955062	0.986674751	0.00505231
<i>HMGCL</i>	ILMN_18301	NM_000191.2	1.028869289	0.988156967	0.00145224
<i>RNASEL</i>	ILMN_25186	NM_021133.2	1.028462688	0.908939728	0.00343962
<i>THRAP3</i>	ILMN_5104	NM_005119.2	1.027723448	1.15862836	0.00424330
<i>ERICH1</i>	ILMN_15474	NM_207332.1	1.02729451	1.505330849	0.00008397
<i>SETD3</i>	ILMN_27724	NM_199123.1	1.026914874	1.847519372	0.00000848
<i>LOC339745</i>	ILMN_21364	NM_001001664.1	1.025194	1.043785199	0.00044059
<i>SYK</i>	ILMN_8126	NM_003177.3	1.02306596	1.069140141	0.00058954
<i>LYPLAL1</i>	ILMN_25005	NM_138794.1	1.021749864	1.274393317	0.00017061
<i>CXorf38</i>	ILMN_24514	NM_144970.1	1.018860976	0.993458358	0.00153043
<i>MFSD1</i>	ILMN_29705	NM_022736.1	1.016547521	0.960614309	0.00809506
<i>COG5</i>	ILMN_10374	NM_006348.2	1.014274311	0.882601775	0.00214891
<i>CTSC</i>	ILMN_14007	NM_001814.2	1.01344871	1.853389446	0.00000125
<i>ARSD</i>	ILMN_23258	NM_001669.2	1.013248964	1.084414068	0.00009669
<i>C10orf78</i>	ILMN_1251	NM_145247.4	1.009571689	0.988084592	0.00097754
<i>IHPK2</i>	ILMN_4437	NM_001005911.1	1.00704733	0.951288743	0.00714339
<i>MGST2</i>	ILMN_8759	NM_002413.3	1.006871413	0.89556421	0.00323860
<i>PQLC3</i>	ILMN_138926	NM_152391.2	1.006106122	1.472969297	0.00001380
<i>APIP</i>	ILMN_15379	NM_015957.1	1.004926744	1.433668335	0.00000145
<i>FES</i>	ILMN_27340	NM_002005.2	1.002838995	1.0193433	0.00138719
<i>LOC51136</i>	ILMN_27239	NM_016125.2	1.002029878	1.193124036	0.00048848
<i>C1orf162</i>	ILMN_19455	NM_174896.2	0.99955481	1.402962342	0.00028599
<i>LOC441268</i>	ILMN_18016	NM_001013725.1	0.996288768	1.130499126	0.00002006
<i>GCNT1</i>	ILMN_28747	NM_001490.3	0.995457433	0.869013003	0.00381332
<i>ARL6IP6</i>	ILMN_11477	NM_152522.2	0.994288632	1.477088131	0.00001328
<i>OAZ2</i>	ILMN_28141	NM_002537.1	0.994156749	1.166412733	0.00001391
<i>FLJ40142</i>	ILMN_5279	NM_207435.1	0.993492071	1.165314596	0.00045441
<i>SP1</i>	ILMN_23737	NM_138473.2	0.993032055	1.260719548	0.00015175
<i>ATG3</i>	ILMN_18856	NM_022488.3	0.988228041	1.916410319	0.00000002
<i>LYL1</i>	ILMN_18317	NM_005583.3	0.987845869	1.06009773	0.00044087
<i>ASPHD2</i>	ILMN_16388	NM_020437.3	0.984948065	1.845832042	0.00000932

<i>DTYMK</i>	ILMN_13450	NM_012145.2	0.984864928	1.210032184	0.00035093
<i>PIGV</i>	ILMN_3048	NM_017837.2	0.978814247	0.991495087	0.00284743
<i>PROSC</i>	ILMN_23472	NM_007198.2	0.977585431	1.202805016	0.00047291
<i>CIDEB</i>	ILMN_11569	NM_014430.1	0.977506182	1.25429654	0.00018715
<i>SIRPB2</i>	ILMN_26592	NM_018556.2	0.977420368	0.697565081	0.00999559
<i>C20orf155</i>	ILMN_14031	NM_019095.3	0.976876389	1.396760216	0.00013889
<i>C3orf1</i>	ILMN_7612	NM_016589.3	0.973048163	1.328604302	0.00090971
<i>NAGA</i>	ILMN_21273	NM_000262.1	0.972941111	0.743299601	0.00545547
<i>NUP214</i>	ILMN_29992	NM_005085.2	0.972928088	1.043626148	0.00010851
<i>MTPN</i>	ILMN_28124	NM_145808.1	0.967281848	1.009440702	0.00033972
<i>SUCLA2</i>	ILMN_5448	NM_003850.1	0.966750454	1.204571152	0.00003408
<i>RNF14</i>	ILMN_4655	NM_004290.3	0.965790647	1.08994806	0.00023317
<i>SPCS3</i>	ILMN_14718	NM_021928.1	0.965416591	1.255510062	0.00001553
<i>IL17R</i>	ILMN_19124	NM_014339.3	0.964912628	0.686029738	0.00622337
<i>C7orf24</i>	ILMN_2391	NM_024051.2	0.962521409	1.580715796	0.00000269
<i>ATP8B4</i>	ILMN_20882	NM_024837.2	0.960699332	1.080063592	0.00398716
<i>GENTB2</i>	ILMN_8806	NM_012287.3	0.960173513	0.856922854	0.00407885
<i>ETNK1</i>	ILMN_137282	NM_018638.3	0.960101883	1.078610828	0.00061539
<i>C8orf70</i>	ILMN_13979	NM_016010.1	0.957844064	0.932397929	0.00250075
<i>SLC33A1</i>	ILMN_18559	NM_004733.2	0.95284096	0.836978907	0.00891011
<i>MINPP1</i>	ILMN_29353	NM_004897.2	0.952445582	0.841313401	0.00437668
<i>FLJ32028</i>	ILMN_2086	NM_152680.1	0.951166051	1.157097549	0.00059476
<i>TMEM69</i>	ILMN_22324	NM_016486.2	0.94461557	1.735210786	0.00000014
<i>TCEA1</i>	ILMN_15877	NM_006756.2	0.943962517	1.032769437	0.00032666
<i>ZFYVE21</i>	ILMN_1317	NM_024071.2	0.939951758	1.266235738	0.00060070
<i>C1GALT1C1</i>	ILMN_14223	NM_001011551.1	0.939682644	1.268820331	0.00042353
<i>MRPL18</i>	ILMN_14120	NM_014161.2	0.939047175	1.211864841	0.00003859
<i>COMMD8</i>	ILMN_16165	NM_017845.2	0.938884957	1.211204735	0.00004943
<i>SUOX</i>	ILMN_25326	NM_001032386.1	0.938099751	1.116839515	0.00021507
<i>SEC23IP</i>	ILMN_7522	NM_007190.2	0.935305956	1.050976614	0.00162119
<i>SLC27A3</i>	ILMN_820	NM_024330.1	0.929556446	1.03995997	0.00420275

<i>TRFP</i>	ILMN_10817	NM_004275.3	0.927887255	1.031529777	0.00025827
<i>RAB24</i>	ILMN_21668	NM_130781.1	0.925882602	1.376496871	0.00034727
<i>ARRB1</i>	ILMN_7318	NM_004041.3	0.925483191	1.287394226	0.00045584
<i>OMA1</i>	ILMN_29719	NM_145243.3	0.923738733	1.043094562	0.00683567
<i>MGC39633</i>	ILMN_25725	NM_152549.1	0.922176038	0.766026212	0.00863450
<i>NIF3L1</i>	ILMN_20423	NM_021824.2	0.921438655	0.937519896	0.00512003
<i>SPTLC1</i>	ILMN_10107	NM_006415.2	0.920711882	1.135911491	0.00084213
<i>RAB28</i>	ILMN_13007	NM_001017979.1	0.920578297	0.870380016	0.00570634
<i>ICAM2</i>	ILMN_12334	NM_000873.2	0.918459715	1.379872474	0.00003721
<i>BET1</i>	ILMN_137098	NM_005868.3	0.915908909	1.015505469	0.00049841
<i>DPAGT1</i>	ILMN_10306	NM_001382.2	0.914750765	1.37671312	0.00026551
<i>MAPK1</i>	ILMN_1351	NM_138957.2	0.912944589	1.973641533	0.00000218
<i>CREB1</i>	ILMN_4653	NM_004379.2	0.912153152	1.289898949	0.00000751
<i>FLJ11806</i>	ILMN_22941	NM_024824.3	0.907043224	0.872607897	0.00251841
<i>GBP4</i>	ILMN_2749	NM_052941.2	0.906318346	0.884424018	0.00165022
<i>UBE1C</i>	ILMN_22726	NM_198197.1	0.906055038	1.312237849	0.00001150
<i>HTATIP2</i>	ILMN_16008	NM_006410.3	0.90509346	0.948238591	0.00323868
<i>DNCL1</i>	ILMN_137049	NM_003746.1	0.904688718	1.039220175	0.00434549
<i>ATG16L2</i>	ILMN_16649	NM_033388.1	0.904500406	0.687753427	0.00455909
<i>RAB28</i>	ILMN_23100	NM_004249.1	0.904454284	1.247203021	0.00004258
<i>SDHD</i>	ILMN_6353	NM_003002.1	0.903802405	0.915922902	0.00148158
<i>CMAS</i>	ILMN_21201	NM_018686.3	0.901806436	1.556521592	0.00002760
<i>SLC39A3</i>	ILMN_27676	NM_144564.4	0.899190336	1.175928733	0.00003123
<i>GALK1</i>	ILMN_18040	NM_000154.1	0.896328132	1.079109296	0.00381481
<i>TMEM60</i>	ILMN_19683	NM_032936.2	0.896262347	1.461391638	0.00006428
<i>AHNAK</i>	ILMN_28759	NM_001620.1	0.893847691	0.663070451	0.00502640
<i>SNX5</i>	ILMN_3880	NM_014426.2	0.89245185	0.888484828	0.00978382
<i>TMED10</i>	ILMN_4416	NM_006827.4	0.888532499	1.15987317	0.00373153
<i>MDM1</i>	ILMN_12153	NM_017440.2	0.885584244	1.052871085	0.00008682
<i>LOC129531</i>	ILMN_27516	NM_138798.1	0.884116434	1.128519561	0.00309031
<i>MTSS1</i>	ILMN_7083	NM_014751.2	0.882192231	0.971455139	0.00044650

<i>FLJ20534</i>	ILMN_9467	NM_017867.1	0.881491211	1.247739397	0.00032511
<i>NACA</i>	ILMN_17162	NM_005594.2	0.879209492	1.329963923	0.00013907
<i>GDI2</i>	ILMN_15402	NM_001494.2	0.876874596	1.421630896	0.00008006
<i>SNX2</i>	ILMN_4948	NM_003100.2	0.876247823	0.935068996	0.00051003
<i>ARRDC1</i>	ILMN_11748	NM_152285.2	0.875635011	1.073875983	0.00011921
<i>ARV1</i>	ILMN_5909	NM_022786.1	0.874609136	0.896227084	0.00931000
<i>THAP1</i>	ILMN_15754	NM_018105.2	0.871272902	0.976199365	0.00181390
<i>REEP5</i>	ILMN_21319	NM_005669.3	0.871021946	0.904693424	0.00161578
<i>PHCA</i>	ILMN_3836	NM_018367.3	0.866524089	1.002767545	0.00079992
<i>VAMP4</i>	ILMN_139375	NM_003762.2	0.865903861	1.174684728	0.00141188
<i>RAB7</i>	ILMN_30038	NM_004637.5	0.861414853	1.222343087	0.00108071
<i>COQ5</i>	ILMN_6126	NM_032314.2	0.859134948	0.991809815	0.00432292
<i>TKT</i>	ILMN_2726	NM_001064.1	0.859005488	0.916255715	0.00097002
<i>MDS025</i>	ILMN_6208	NM_021825.3	0.858810512	0.793814684	0.00814564
<i>WDR40A</i>	ILMN_29238	NM_015397.1	0.857153805	0.981080156	0.00634603
<i>NOMO1</i>	ILMN_22691	NM_014287.3	0.856327308	1.032285196	0.00044624
<i>PLAC8</i>	ILMN_17809	NM_016619.1	0.853759799	0.772570372	0.00784848
<i>UNC50</i>	ILMN_19045	NM_014044.4	0.853303767	1.843345515	0.00000260
<i>TM9SF1</i>	ILMN_1371	NM_001014842.1	0.852681312	1.044733631	0.00020166
<i>THEM2</i>	ILMN_27212	NM_018473.2	0.852676742	1.164355119	0.00142445
<i>TRIP4</i>	ILMN_10213	NM_016213.3	0.849722307	1.77715718	0.00000087
<i>MGC15875</i>	ILMN_28180	NM_153373.1	0.848075084	0.773122313	0.00731177
<i>CLK3</i>	ILMN_1044	NM_003992.1	0.845775564	0.958931247	0.00082384
<i>CORO1A</i>	ILMN_6768	NM_007074.2	0.844780702	1.132107408	0.00013626
<i>CRIP1</i>	ILMN_12903	NM_014171.3	0.844040876	1.202882939	0.00161066
<i>SDFR1</i>	ILMN_138444	NM_012428.1	0.842592487	0.771466242	0.00266393
<i>ATP6VOE</i>	ILMN_8923	NM_003945.3	0.841844604	1.529777909	0.00000753
<i>TMCO3</i>	ILMN_19218	NM_017905.3	0.838962707	1.176980562	0.00451413
<i>SNAP29</i>	ILMN_20709	NM_004782.2	0.836938792	1.255622288	0.00003215
<i>NCK1</i>	ILMN_13975	NM_006153.3	0.833950007	0.911191822	0.00105238
<i>SNX1</i>	ILMN_924	NM_003099.3	0.832963832	0.778505884	0.00455591

<i>PRKAR1A</i>	ILMN_18925	NM_002734.3	0.832024455	1.26445346	0.00085621
<i>HLA-DPA1</i>	ILMN_13606	NM_033554.2	0.830818992	1.198741802	0.00006353
<i>FKBP1A</i>	ILMN_1290	NM_000801.2	0.82816191	1.376397268	0.00068549
<i>CHKB</i>	ILMN_1067	NM_005198.3	0.827517927	1.035599235	0.00183007
<i>MGC16385</i>	ILMN_5329	NM_145039.2	0.8274803	0.794442997	0.00790513
<i>ARPC4</i>	ILMN_24112	NM_001024959.1	0.82741729	1.300843186	0.00000283
<i>C21orf33</i>	ILMN_28752	NM_004649.4	0.821418828	0.990826614	0.00317030
<i>TES</i>	ILMN_17251	NM_015641.2	0.819022224	0.734094965	0.00560739
<i>STT3A</i>	ILMN_17585	NM_152713.2	0.816670936	1.287957745	0.00003264
<i>TMEM126B</i>	ILMN_18826	NM_018480.2	0.813364425	1.16222445	0.00148392
<i>NDUFAF1</i>	ILMN_13182	NM_016013.2	0.810438154	1.268624194	0.00045587
<i>WRB</i>	ILMN_12263	NM_004627.2	0.809280188	1.063669514	0.00039734
<i>C17orf62</i>	ILMN_12733	NM_001033046.1	0.808445826	0.873210482	0.00057408
<i>LOC339344</i>	ILMN_6535	NM_001012643.2	0.80801784	0.88574801	0.00770728
<i>UTRN</i>	ILMN_15375	NM_007124.1	0.806804848	1.062976949	0.00038025
<i>YIF1B</i>	ILMN_10933	NM_001031731.1	0.805625909	0.827041041	0.00081460
<i>WDR23</i>	ILMN_11121	NM_025230.3	0.80464906	0.713414493	0.00387877
<i>CG018</i>	ILMN_24274	NM_052818.1	0.804367155	1.004875505	0.00158518
<i>CCDC5</i>	ILMN_18943	NM_138443.2	0.803601045	0.811374754	0.00126376
<i>MAP3K3</i>	ILMN_426	NM_203351.1	0.801573187	0.933775478	0.00008829
<i>PAQR4</i>	ILMN_20105	NM_152341.2	0.80144963	0.85738589	0.00700293
<i>RBM4</i>	ILMN_11057	NM_002896.1	0.800689376	1.000393552	0.00852204
<i>FLJ10260</i>	ILMN_454	NM_018042.2	0.799519136	1.101275589	0.00004981
<i>C14orf159</i>	ILMN_22928	NM_024952.4	0.79931973	1.070855583	0.00137924
<i>CRYZL1</i>	ILMN_5113	NM_005111.5	0.797728559	1.206417193	0.00010391
<i>COQ9</i>	ILMN_16451	NM_020312.1	0.795958206	1.041376851	0.00209683
<i>PCK2</i>	ILMN_2603	NM_004563.2	0.793276194	0.970467923	0.00068396
<i>EXOSC3</i>	ILMN_9043	NM_016042.2	0.790073504	1.066489341	0.00024318
<i>RER1</i>	ILMN_16490	NM_007033.2	0.788900128	1.091279047	0.00011252
<i>TM9SF1</i>	ILMN_1249	NM_006405.5	0.788259179	1.468086787	0.00004208
<i>ACN9</i>	ILMN_6296	NM_020186.1	0.787176157	0.883990806	0.00311959

<i>CTSO</i>	ILMN_22132	NM_001334.2	0.786911991	0.842038184	0.00148380
<i>DHRS8</i>	ILMN_12219	NM_016245.2	0.784360455	0.788762086	0.00171737
<i>MRPL30</i>	ILMN_137901	NM_145212.1	0.783716628	0.777905407	0.00207844
<i>BANF1</i>	ILMN_13154	NM_003860.2	0.781911821	0.91109998	0.00759135
<i>C10orf6</i>	ILMN_24540	NM_018121.2	0.78063571	0.697345556	0.00689460
<i>HLA-F</i>	ILMN_3012	NM_018950.1	0.778737753	0.931623998	0.00211549
<i>C7orf28B</i>	ILMN_8655	NM_198097.1	0.777924185	0.933647594	0.00693097
<i>KIAA0152</i>	ILMN_24410	NM_014730.2	0.777856443	0.76897219	0.00436356
<i>DSCR1</i>	ILMN_3292	NM_203417.1	0.776155691	0.909602389	0.00619489
<i>UBE2G1</i>	ILMN_4331	NM_003342.4	0.776077148	1.539756439	0.00012246
<i>AKR1A1</i>	ILMN_18164	NM_006066.2	0.775609482	1.438402297	0.00003774
<i>RNPEP</i>	ILMN_22895	NM_020216.3	0.773848693	0.798178296	0.00210507
<i>PDCD10</i>	ILMN_26567	NM_145859.1	0.773529175	0.734718047	0.00444282
<i>TIA1</i>	ILMN_29910	NM_022173.1	0.771619932	1.012734353	0.00088562
<i>C17orf40</i>	ILMN_18247	NM_018428.2	0.770526096	1.085875486	0.00034219
<i>GABPA</i>	ILMN_28392	NM_002040.2	0.769932318	0.918905978	0.00099307
<i>TADA3L</i>	ILMN_7198	NM_006354.2	0.76569954	1.159110327	0.00058551
<i>GNPAT</i>	ILMN_15390	NM_014236.1	0.765579192	1.098910095	0.00028603
<i>IIP45</i>	ILMN_12607	NM_001025374.1	0.763584039	1.107873404	0.00010382
<i>PSMA5</i>	ILMN_15259	NM_002790.2	0.762135923	1.581564317	0.00011433
<i>SUMF1</i>	ILMN_15497	NM_182760.2	0.759267277	0.823262053	0.00496238
<i>PDCD8</i>	ILMN_20381	NM_004208.2	0.757914227	1.319956996	0.00015773
<i>SCO1</i>	ILMN_14321	NM_004589.1	0.757545888	1.364663218	0.00000441
<i>DUSP18</i>	ILMN_9044	NM_152511.3	0.756268314	0.953020427	0.00032814
<i>RAB24</i>	ILMN_25731	NM_001031677.1	0.754549224	0.988549939	0.00110535
<i>DUSP3</i>	ILMN_14523	NM_004090.2	0.753530167	0.950437848	0.00581700
<i>EPS15</i>	ILMN_8810	NM_001981.2	0.752852195	0.971791525	0.00324139
<i>CCDC53</i>	ILMN_25394	NM_016053.1	0.752132981	1.108722086	0.00761538
<i>RHBDD1</i>	ILMN_13013	NM_032276.2	0.749264488	1.440263385	0.00014650
<i>UTP14A</i>	ILMN_3222	NM_006649.2	0.746978261	0.722920018	0.00572518
<i>APOL3</i>	ILMN_8572	NM_030644.1	0.745532666	0.774795383	0.00253167

AHCYL1	ILMN_21551	NM_006621.3	0.743721598	1.182785059	0.00012557
D15Wsu75e	ILMN_13640	NM_015704.1	0.743698121	1.437551529	0.00004606
FAM45A	ILMN_28113	NM_207009.2	0.739449537	0.80784723	0.00076796
WDR58	ILMN_25260	NM_024339.2	0.739211399	0.855804331	0.00209070
LMBRD1	ILMN_6684	NM_018368.2	0.737434728	1.633121026	0.00000048
GMPR2	ILMN_15872	NM_001002002.1	0.736748124	1.047904062	0.00098527
ACTL6A	ILMN_3186	NM_177989.1	0.736251612	0.955844795	0.00063734
TP53I3	ILMN_2007	NM_147184.1	0.735509717	0.697604939	0.00877149
BRD8	ILMN_10431	NM_183359.1	0.735297102	0.808354111	0.00087882
LIPT1	ILMN_5728	NM_145197.1	0.734857538	0.949720387	0.00015131
TMBIM4	ILMN_22938	NM_016056.1	0.734512096	1.354611683	0.00113048
RSU1	ILMN_21628	NM_012425.3	0.734466102	0.776631195	0.00791837
HLA-DMB	ILMN_2252	NM_002118.3	0.73405362	1.234805982	0.00059628
C14orf142	ILMN_28666	NM_032490.3	0.731225916	1.03362714	0.00244109
BCKDK	ILMN_13829	NM_005881.1	0.729788087	0.823487241	0.00620961
ARHGAP25	ILMN_1674	NM_001007231.1	0.728785554	1.031541589	0.00812840
NDUFB5	ILMN_20286	NM_002492.2	0.727040149	0.978032175	0.00114697
GEMIN6	ILMN_23187	NM_024775.9	0.726343401	0.982878344	0.00246154
ATP6V0A1	ILMN_138088	NM_005177.2	0.725439284	1.1407963	0.00647840
GLT25D1	ILMN_15022	NM_024656.2	0.725314591	1.067096598	0.00025548
BCL2L2	ILMN_9171	NM_004050.2	0.724745898	1.030677194	0.00170958
YIPF6	ILMN_8545	NM_173834.2	0.724660912	1.28290882	0.00004430
WDR71	ILMN_13656	NM_025155.1	0.724614947	1.053661809	0.00164536
GNS	ILMN_6937	NM_002076.2	0.723930284	1.641619517	0.00011972
P2RX7	ILMN_26570	NM_002562.4	0.718844427	0.869779162	0.00359117
C2orf18	ILMN_138677	NM_017877.2	0.716007244	0.736293165	0.00574343
TTL	ILMN_14027	NM_153712.3	0.715465204	1.444770368	0.00007258
FRAT1	ILMN_29787	NM_181355.1	0.714693512	0.885429679	0.00187052
HTLF	ILMN_10159	NM_002158.2	0.711836675	0.847706272	0.00958303
MT	ILMN_5185	NM_173467.3	0.71124282	1.539123007	0.00000114
SELL	ILMN_6951	NM_000655.2	0.709452209	0.745836628	0.00525236

<i>OSTF1</i>	ILMN_30131	NM_012383.3	0.707754417	2.255587056	0.00000318
<i>NARS</i>	ILMN_6062	NM_004539.2	0.706148703	0.738215334	0.00558703
<i>PIGM</i>	ILMN_19117	NM_145167.1	0.705962924	0.835125048	0.00054362
<i>PANK2</i>	ILMN_137507	NM_153640.1	0.705179063	1.272416067	0.00005978
<i>NOD9</i>	ILMN_16473	NM_024618.2	0.705010782	0.955293557	0.00679340
<i>SLC36A1</i>	ILMN_22384	NM_078483.2	0.701269954	1.12297335	0.00552217
<i>LYSMD2</i>	ILMN_19682	NM_153374.1	0.699845822	1.003581606	0.00039068
<i>NUP37</i>	ILMN_4147	NM_024057.2	0.69729722	1.115484685	0.00107876
<i>WDFY2</i>	ILMN_14243	NM_052950.2	0.696920753	1.270865789	0.00000365
<i>MAT2B</i>	ILMN_18923	NM_013283.3	0.694070182	0.921791826	0.00150174
<i>GSR</i>	ILMN_14467	NM_000637.2	0.693682753	1.446611933	0.00002356
<i>ING1</i>	ILMN_2492	NM_198219.1	0.691970285	1.062073688	0.00034920
<i>UBE2L6</i>	ILMN_7531	NM_004223.3	0.690995994	1.221401827	0.00442322
<i>DUSP22</i>	ILMN_15436	NM_020185.3	0.689864834	1.207246339	0.00007646
<i>DERA</i>	ILMN_16833	NM_015954.1	0.688508854	0.82267023	0.00331905
<i>FLJ39370</i>	ILMN_18245	NM_152400.1	0.68769568	0.751426804	0.00347573
<i>CNDP2</i>	ILMN_4139	NM_018235.1	0.687168603	1.093880054	0.00422201
<i>DNTTIP1</i>	ILMN_17783	NM_052951.2	0.683667693	0.854101583	0.00079144
<i>PSMB9</i>	ILMN_12611	NM_002800.4	0.67953923	0.73246271	0.00985021
<i>FAM96A</i>	ILMN_13416	NM_032231.4	0.675960026	1.07088344	0.00104755
<i>COP57A</i>	ILMN_13902	NM_016319.1	0.675795633	1.141314182	0.00345432
<i>COMT</i>	ILMN_2463	NM_000754.2	0.675541976	0.859080355	0.00648443
<i>SPAST</i>	ILMN_15461	NM_199436.1	0.67529387	0.997006821	0.00142484
<i>RNF34</i>	ILMN_16571	NM_025126.2	0.673203274	0.704105246	0.00841035
<i>YIPF1</i>	ILMN_19321	NM_018982.3	0.670580284	2.072819422	0.00000023
<i>NEDD8</i>	ILMN_21274	NM_006156.1	0.669855809	0.674729549	0.00308767
<i>MINA</i>	ILMN_18661	NM_153182.1	0.668899752	1.787534969	0.00001651
<i>MGC40405</i>	ILMN_1247	NM_152789.1	0.66835355	0.65432264	0.00533856
<i>STX12</i>	ILMN_18776	NM_177424.1	0.667206523	0.672081087	0.00821280
<i>VPS41</i>	ILMN_2386	NM_014396.2	0.665669394	1.039923735	0.00131977
<i>C14orf133</i>	ILMN_19051	NM_022067.2	0.66448481	1.064551011	0.00005755

ALDH3A2	ILMN_15293	NM_001031806.1	0.663494351	1.225806952	0.00114718
PHKB	ILMN_18544	NM_001031835.1	0.663202945	0.828357174	0.00199503
PINK1	ILMN_27027	NM_032409.1	0.663117176	1.392356599	0.00017973
FLJ33814	ILMN_21814	NM_173510.1	0.662289635	0.786509978	0.00310654
PCCA	ILMN_6045	NM_000282.2	0.662170417	0.875641136	0.00671001
PYCR2	ILMN_18209	NM_013328.2	0.662158353	0.778688542	0.00586486
CPSF2	ILMN_12041	NM_017437.1	0.661956716	0.678957119	0.00474164
UBE2E2	ILMN_29196	NM_152653.1	0.6614415	1.189101101	0.00016503
TAF12	ILMN_3797	NM_005644.2	0.661208219	1.538640535	0.00001332
SLC25A1	ILMN_28181	NM_005984.1	0.659489816	0.636752915	0.00404682
SEC11L1	ILMN_12976	NM_014300.2	0.65876876	1.279650634	0.00001105
DNAJB6	ILMN_7651	NM_058246.3	0.655667179	1.054957112	0.00048058
KLHL8	ILMN_19798	NM_020803.3	0.654892324	0.9023516	0.00179519
ACO1	ILMN_9544	NM_002197.1	0.653596004	1.252199889	0.00025310
GTF2H3	ILMN_9713	NM_001516.3	0.652562825	0.762186527	0.00523155
LSM10	ILMN_14450	NM_032881.1	0.652247983	0.934453562	0.00090340
NAG8	ILMN_21136	NM_014411.2	0.651659684	0.654467349	0.00549902
ATP5F1	ILMN_138139	NM_001688.3	0.650324011	1.6471075	0.00000221
NSF	ILMN_23282	NM_006178.1	0.649787429	0.966754147	0.00150748
C14orf129	ILMN_7725	NM_016472.3	0.649488365	0.845576993	0.00222523
C7orf11	ILMN_20229	NM_138701.1	0.648424024	1.030461324	0.00188419
RAB4A	ILMN_14453	NM_004578.2	0.645974184	1.119336929	0.00016381
PAPSS1	ILMN_6621	NM_005443.4	0.644433151	1.089439803	0.00684807
RAB8A	ILMN_8881	NM_005370.4	0.643908926	2.486726255	0.00000007
SFT2D1	ILMN_5727	NM_145169.1	0.643517185	1.381139093	0.00017387
C5orf15	ILMN_23157	NM_020199.1	0.641504014	1.369919922	0.00000815
STIP1	ILMN_28761	NM_006819.1	0.639747132	0.914075119	0.00037943
TRIM22	ILMN_532	NM_006074.2	0.639603182	1.16001109	0.00076658
CD84	ILMN_16790	NM_003874.1	0.637727242	0.674191429	0.00524555
CCT7	ILMN_22959	NM_006429.2	0.630546718	1.001568609	0.00117525
TXNDC	ILMN_13849	NM_030755.3	0.629887162	0.839765388	0.00214526

GALM	ILMN_10698	NM_138801.1	0.629606832	1.079055934	0.00020824
AP3B1	ILMN_4527	NM_003664.3	0.628411492	0.774722262	0.00530390
YBX1	ILMN_2951	NM_004559.2	0.626746918	0.799211438	0.00576257
CPOX	ILMN_28523	NM_000097.4	0.62547916	0.888055102	0.00258340
SNTB1	ILMN_23979	NM_021021.2	0.625010436	0.894065332	0.00935770
VPS72	ILMN_17901	NM_005997.1	0.62278748	1.26711063	0.00030014
ATP6V0D1	ILMN_139373	NM_004691.3	0.62147397	0.730172626	0.00229783
SUMF2	ILMN_9757	NM_015411.1	0.617287604	0.874405945	0.00843465
MR1	ILMN_10108	NM_001531.1	0.615780365	0.968113548	0.00993067
TRAFD1	ILMN_21539	NM_006700.1	0.613875843	0.571258077	0.00960467
HK1	ILMN_23877	NM_033500.1	0.612449234	1.011322954	0.00092195
P4HA1	ILMN_8003	NM_000917.2	0.611236652	0.72707231	0.00625872
FLJ14466	ILMN_29870	NM_032790.2	0.61089811	0.830612766	0.00172031
PSMD4	ILMN_137384	NM_002810.1	0.610740993	0.757697935	0.00101724
C10orf61	ILMN_24822	NM_001013840.1	0.610458973	1.081393619	0.00013008
FKBP4	ILMN_9429	NM_002014.2	0.609790605	0.822235317	0.00292538
CDK2AP1	ILMN_19522	NM_004642.2	0.608899789	0.746051772	0.00607617
PBX3	ILMN_23493	NM_006195.4	0.608542479	1.042523333	0.00033834
CCNC	ILMN_11667	NM_005190.3	0.60615937	0.773035605	0.00270549
PRCP	ILMN_2019	NM_199418.1	0.605288708	1.075108698	0.00129425
GBE1	ILMN_2925	NM_000158.1	0.605174564	1.414871406	0.00066951
LRCH3	ILMN_14018	NM_032773.2	0.603643585	0.813171638	0.00619821
POLR2E	ILMN_21511	NM_002695.2	0.603012311	0.990775486	0.00027094
PGM2	ILMN_6226	NM_018290.2	0.601475444	0.722208068	0.00527047
NCOA4	ILMN_24328	NM_005437.1	0.600193396	1.108888989	0.00054757
CD37	ILMN_20101	NM_001774.1	0.600048449	0.728222604	0.00438458
GGPS1	ILMN_137664	NM_004837.2	0.599117516	0.84254707	0.00184079
CCT6A	ILMN_3686	NM_001009186.1	0.598843562	0.840343858	0.00148873
HP1BP3	ILMN_29502	NM_016287.2	0.598707576	0.947341533	0.00169712
TRA16	ILMN_20587	NM_176880.4	0.598636525	0.823603103	0.00530158
ETFA	ILMN_138729	NM_000126.1	0.597849505	1.12408418	0.00015177

VAMP5	ILMN_20179	NM_006634.2	0.597238144	0.71886071	0.00463721
TSEN34	ILMN_5948	NM_024075.1	0.597201061	1.116530396	0.00036174
C9orf23	ILMN_3926	NM_148178.1	0.595942735	0.846713274	0.00534341
ACAT1	ILMN_29522	NM_000019.2	0.594932008	0.719532236	0.00305532
MRPL48	ILMN_24933	NM_016055.4	0.594853628	1.268606525	0.00031550
GOSR2	ILMN_4229	NM_054022.2	0.593957326	1.346384331	0.00004694
PSME2	ILMN_19572	NM_002818.2	0.591841903	1.139840032	0.00020595
TMEM77	ILMN_30117	NM_178454.2	0.591390405	0.901345416	0.00467419
PSMC6	ILMN_3800	NM_002806.2	0.584372895	0.861482699	0.00052608
CBX1	ILMN_6262	NM_006807.3	0.575442923	1.182977034	0.00251133
FLJ13614	ILMN_12182	NM_139076.1	0.575017217	0.696881716	0.00797877
C9orf19	ILMN_12810	NM_022343.2	0.574894314	1.050523704	0.00532794
CDA08	ILMN_10328	NM_030790.2	0.574488481	0.835644003	0.00224865
LOC84661	ILMN_18534	NM_032574.2	0.569701867	0.981231913	0.00016403
BCCIP	ILMN_26223	NM_016567.2	0.569086006	0.844403344	0.00325171
NFYC	ILMN_5936	NM_014223.2	0.568640405	0.868762425	0.00404212
MRE11A	ILMN_6718	NM_005590.3	0.568494718	1.529673741	0.00001696
OSBPL1A	ILMN_662	NM_018030.3	0.568215143	0.926351958	0.00047778
LOC340061	ILMN_18797	NM_198282.1	0.567618043	0.689243491	0.00474147
BCKDHA	ILMN_13270	NM_000709.2	0.566591781	1.179166285	0.00005504
VBP1	ILMN_9083	NM_003372.4	0.565843822	1.066690264	0.00041695
TERF2	ILMN_21134	NM_005652.2	0.564508109	0.831878711	0.00245700
C2orf7	ILMN_24250	NM_032319.1	0.563716251	1.367309251	0.00042654
CEP63	ILMN_1690	NM_025180.2	0.558482462	0.742866444	0.00729568
OACT5	ILMN_22717	NM_005768.5	0.557772544	1.167585684	0.00017228
ARF3	ILMN_6605	NM_001659.1	0.556975803	0.902342007	0.00136220
SLC38A6	ILMN_7226	NM_153811.1	0.556810899	0.810893343	0.00283712
PFN1	ILMN_2354	NM_005022.2	0.556212216	0.840582789	0.00181308
MANEA	ILMN_6991	NM_024641.2	0.555690029	0.765970605	0.00902237
ALG8	ILMN_24209	NM_001007027.1	0.551946917	0.739794606	0.00810565
TMEM14C	ILMN_12206	NM_016462.2	0.551640294	0.959306211	0.00374177

<i>PXMP4</i>	ILMN_4808	NM_007238.3	0.549666885	0.885829412	0.00252578
<i>ACTR10</i>	ILMN_18205	NM_018477.1	0.548316623	1.387712534	0.00001911
<i>C11orf17</i>	ILMN_9655	NM_020642.2	0.547234077	0.980450203	0.00333597
<i>ACTR2</i>	ILMN_2152	NM_001005386.1	0.546355357	0.812154576	0.00608161
<i>RSNL2</i>	ILMN_17216	NM_024692.3	0.545946152	0.829756456	0.00805801
<i>COPZ1</i>	ILMN_4037	NM_016057.1	0.545520981	0.799296562	0.00395313
<i>CAPNS1</i>	ILMN_6617	NM_001003962.1	0.54537447	0.669326948	0.00573710
<i>STUB1</i>	ILMN_22822	NM_005861.2	0.542125275	0.698526637	0.00491662
<i>PSMB5</i>	ILMN_29312	NM_002797.2	0.541998408	1.055086186	0.00029673
<i>DYM</i>	ILMN_6843	NM_017653.2	0.541041599	0.9654535	0.00428592
<i>AGPS</i>	ILMN_138634	NM_003659.1	0.540726523	1.18173707	0.00074260
<i>CLCN3</i>	ILMN_15279	NM_001829.2	0.540459483	0.692590724	0.00838864
<i>ARL5</i>	ILMN_137185	NM_012097.2	0.539235483	0.946302784	0.00202584
<i>C4orf13</i>	ILMN_11413	NM_001029998.1	0.538921014	1.019956729	0.00184603
<i>CD244</i>	ILMN_7885	NM_016382.2	0.537414131	0.706077057	0.00822767
<i>MRPS28</i>	ILMN_16611	NM_014018.2	0.533530893	0.932362259	0.00474327
<i>SCCPDH</i>	ILMN_30353	NM_016002.2	0.53299596	0.874953099	0.00267603
<i>CSNK1A1</i>	ILMN_24977	NM_001892.4	0.532411953	0.950426926	0.00968292
<i>VPS29</i>	ILMN_14188	NM_016226.2	0.529279832	1.141988392	0.00123260
<i>C10orf7</i>	ILMN_11650	NM_006023.1	0.529032709	1.472693353	0.00005202
<i>INPP5B</i>	ILMN_6646	NM_005540.1	0.528913697	0.676301308	0.00964580
<i>ZMPSTE24</i>	ILMN_13713	NM_005857.2	0.526380447	0.915873674	0.00174190
<i>GALNT4</i>	ILMN_15303	NM_003774.3	0.52596861	0.692989685	0.00942236
<i>GOLGA5</i>	ILMN_20157	NM_005113.2	0.52402571	0.855780518	0.00358645
<i>GLE1L</i>	ILMN_19199	NM_001003722.1	0.522235331	0.816909203	0.00632145
<i>OGFOD1</i>	ILMN_16561	NM_001031707.1	0.518441492	0.794727583	0.00303007
<i>RBM18</i>	ILMN_8277	NM_033117.2	0.51592074	1.116793418	0.00560431
<i>NS4ATP2</i>	ILMN_18384	NM_024632.3	0.515324206	0.691190711	0.00994818
<i>PDCD6</i>	ILMN_15265	NM_013232.2	0.514233262	1.102864386	0.00112019
<i>GABARAPL2</i>	ILMN_9805	NM_007285.6	0.513667927	1.671080501	0.00019022
<i>BTF3L4</i>	ILMN_3105	NM_152265.1	0.513640416	1.15768482	0.00001829

WIBG	ILMN_19902	NM_032345.1	0.513365324	0.802261004	0.00264002
NFE2L1	ILMN_13955	NM_003204.1	0.513152066	0.91593502	0.00041556
C7orf28A	ILMN_2087	NM_015622.5	0.509415546	0.604216727	0.00817957
C15orf17	ILMN_13536	NM_020447.2	0.507043484	1.129601563	0.00279722
TPK1	ILMN_6467	NM_022445.2	0.507032195	0.967616723	0.00125616
RHOA	ILMN_6247	NM_001664.2	0.506140959	0.748492876	0.00098190
WAS	ILMN_1668	NM_000377.1	0.504612066	1.161072475	0.00088430
LOC285636	ILMN_8228	NM_175921.4	0.503547058	0.796804283	0.00655570
TMCO1	ILMN_8084	NM_019026.2	0.502782404	0.920191132	0.00070381
TM2D1	ILMN_9063	NM_032027.2	0.502048373	0.925561389	0.00162488
RCN1	ILMN_8159	NM_002901.1	0.501933318	0.87855392	0.00039560
SFRS2	ILMN_26358	NM_003016.2	-0.501101485	0.751488215	0.00771185
NCLN	ILMN_29505	NM_020170.3	-0.50139972	1.156881313	0.00344346
MTMR2	ILMN_24002	NM_201281.1	-0.501808986	0.965612981	0.00278489
OSBPL7	ILMN_4611	NM_145798.2	-0.506236884	0.692412796	0.00713701
RIPK5	ILMN_1333	NM_199462.1	-0.506241651	1.10939465	0.00094333
ELK1	ILMN_14942	NM_005229.2	-0.506595063	1.06771036	0.00253708
ILKAP	ILMN_12973	NM_030768.2	-0.507099782	1.203991038	0.00132750
FBL	ILMN_14351	NM_001436.2	-0.508152926	0.93084529	0.00616627
RAFTLIN	ILMN_29470	NM_015150.1	-0.509860651	0.691386978	0.00867436
FEM1A	ILMN_2838	NM_018708.1	-0.51131736	0.952052307	0.00125013
PSCD2	ILMN_16003	NM_017457.3	-0.511819719	0.700114811	0.00583446
CCDC16	ILMN_23839	NM_052857.2	-0.512078285	1.0515164	0.00018637
RPL37	ILMN_138392	NM_000997.3	-0.512921504	1.018252708	0.00011698
WDR19	ILMN_11749	NM_025132.3	-0.513291141	0.791396744	0.00223438
ZCCHC3	ILMN_28604	NM_033089.6	-0.51345165	1.029007424	0.00137729
COG1	ILMN_137022	NM_018714.1	-0.513593241	0.857290291	0.00279936
MXD4	ILMN_26701	NM_006454.2	-0.513605477	0.955769313	0.00302540
WBP1	ILMN_20957	NM_012477.2	-0.514893469	0.923870702	0.00079940
LIMD2	ILMN_25849	NM_030576.2	-0.515598945	0.917797589	0.00442454
ZFYVE20	ILMN_15619	NM_022340.2	-0.517706349	1.009276209	0.00012700

<i>MRPL2</i>	ILMN_4811	NM_015950.3	-0.518147351	1.087524189	0.00269727
<i>EDG4</i>	ILMN_4660	NM_004720.4	-0.518490806	0.84209368	0.00080746
<i>RINT-1</i>	ILMN_23747	NM_021930.3	-0.51926901	0.819352789	0.00654352
<i>COX6C</i>	ILMN_6419	NM_004374.2	-0.519912949	0.799991141	0.00073464
<i>2'-PDE</i>	ILMN_16583	NM_177966.4	-0.521811264	1.020236026	0.00115644
<i>SIAHBP1</i>	ILMN_14897	NM_014281.3	-0.521985439	1.165205236	0.00404616
<i>FLJ13149</i>	ILMN_10466	NM_021826.4	-0.522670012	0.899495902	0.00365177
<i>RPA3</i>	ILMN_29134	NM_002947.3	-0.523175111	0.784664531	0.00127759
<i>FLJ20186</i>	ILMN_2786	NM_017702.2	-0.525049178	0.640859744	0.00639750
<i>C14orf156</i>	ILMN_6302	NM_031210.3	-0.525876549	0.695348323	0.00156890
<i>YARS</i>	ILMN_13503	NM_003680.2	-0.526900543	0.781042911	0.00307002
<i>C10orf28</i>	ILMN_989	NM_014472.3	-0.528865117	0.666665125	0.00893320
<i>GNL3</i>	ILMN_18645	NM_014366.4	-0.529243563	1.027555574	0.00638245
<i>CIRH1A</i>	ILMN_2574	NM_032830.1	-0.52990755	1.010140713	0.00537304
<i>C14orf43</i>	ILMN_22813	NM_194278.2	-0.530803886	0.832143247	0.00164632
<i>PRPS1</i>	ILMN_6887	NM_002764.2	-0.531046429	1.110198744	0.00014613
<i>PUSL1</i>	ILMN_8805	NM_153339.1	-0.53137201	0.983409622	0.00171481
<i>PARP6</i>	ILMN_5118	NM_020213.1	-0.532217352	1.786552893	0.00004720
<i>NIFUN</i>	ILMN_1909	NM_014301.2	-0.532831492	0.855300668	0.00545087
<i>EDEM1</i>	ILMN_9408	NM_014674.1	-0.534159313	0.899573452	0.00834955
<i>RPL23A</i>	ILMN_137509	NM_000984.4	-0.534879307	1.085682379	0.00146829
<i>CCNB1IP1</i>	ILMN_16420	NM_021178.2	-0.534921378	1.211904411	0.00007463
<i>BMS1L</i>	ILMN_4307	NM_014753.2	-0.535113173	0.735214469	0.00860805
<i>MRPS24</i>	ILMN_17184	NM_032014.1	-0.535266097	0.647342605	0.00313202
<i>ZCCHC11</i>	ILMN_4936	NM_001009881.1	-0.53789923	0.680978374	0.00392385
<i>GLCCI1</i>	ILMN_22544	NM_138426.1	-0.538041773	0.782651606	0.00866811
<i>ZNF211</i>	ILMN_8413	NM_006385.2	-0.538417821	0.939940258	0.00064505
<i>TIMM22</i>	ILMN_29380	NM_013337.2	-0.541037298	0.849931579	0.00247792
<i>SLC41A3</i>	ILMN_19829	NM_001008485.1	-0.541342697	0.866825731	0.00238013
<i>SSSCA1</i>	ILMN_7443	NM_006396.1	-0.542120495	0.791636209	0.00711843
<i>NUP205</i>	ILMN_11753	NM_015135.1	-0.542554722	0.903764833	0.00077945

<i>IFT122</i>	ILMN_21045	NM_018262.2	-0.54286388	1.090504474	0.00207521
<i>LOC113444</i>	ILMN_15613	NM_138428.2	-0.544285305	0.982416486	0.00067315
<i>DNAJB6</i>	ILMN_26714	NM_005494.2	-0.545564895	0.793932289	0.00764188
<i>SLC25A17</i>	ILMN_21822	NM_006358.2	-0.545698652	0.777571931	0.00476313
<i>ZNF350</i>	ILMN_20125	NM_021632.3	-0.550047933	0.783806276	0.00107854
<i>RRAS2</i>	ILMN_30083	NM_012250.3	-0.550217999	0.683428196	0.00715362
<i>ARHGAP4</i>	ILMN_2811	NM_001666.2	-0.551004947	0.785065836	0.00558225
<i>PHLPPL</i>	ILMN_10066	NM_015020.2	-0.553043887	0.955468838	0.00637876
<i>NOL8</i>	ILMN_25734	NM_017948.4	-0.553410288	0.6366454	0.00843367
<i>CHD6</i>	ILMN_28663	NM_032221.3	-0.553971876	1.023392347	0.00198387
<i>CERK</i>	ILMN_2275	NM_182661.1	-0.555520585	0.893010898	0.00316698
<i>NEIL2</i>	ILMN_11540	NM_145043.1	-0.555531793	0.732799123	0.00484798
<i>ASCC3</i>	ILMN_5802	NM_022091.3	-0.555810381	1.059056206	0.00552599
<i>HECA</i>	ILMN_3008	NM_016217.2	-0.556347682	0.858807643	0.00114314
<i>TNRC6B</i>	ILMN_901	NM_001024843.1	-0.556756071	0.808217912	0.00212181
<i>ATP5I</i>	ILMN_14284	NM_007100.2	-0.558678699	0.581710782	0.00508938
<i>NIP7</i>	ILMN_28300	NM_016101.3	-0.559420708	0.931442207	0.00178296
<i>SSR4</i>	ILMN_3302	NM_006280.1	-0.560086611	0.812498017	0.00075741
<i>KCTD9</i>	ILMN_1204	NM_017634.2	-0.56103139	0.901177541	0.00096362
<i>C8orf38</i>	ILMN_13088	NM_152416.1	-0.561399528	0.986388729	0.00117088
<i>UBN1</i>	ILMN_15680	NM_016936.2	-0.561640796	1.047767493	0.00032824
<i>LOC91689</i>	ILMN_9476	NM_033318.3	-0.562517452	1.023424687	0.00103510
<i>C9orf156</i>	ILMN_12842	NM_016481.2	-0.563566234	0.721816847	0.00861659
<i>HPS1</i>	ILMN_2724	NM_182639.1	-0.564267898	0.809408141	0.00092401
<i>POLR2I</i>	ILMN_17223	NM_006233.4	-0.564447269	0.610663494	0.00922027
<i>IMMP2L</i>	ILMN_30049	NM_032549.1	-0.564730086	0.802043738	0.00460118
<i>LOC168850</i>	ILMN_24570	NM_176814.3	-0.56555576	0.788592126	0.00749700
<i>DDA1</i>	ILMN_29105	NM_024050.4	-0.565916143	0.900027059	0.00038974
<i>MED9</i>	ILMN_19228	NM_018019.2	-0.569409453	0.708003815	0.00188291
<i>WDR75</i>	ILMN_14393	NM_032168.1	-0.5700052	0.7651042	0.00359337
<i>MRPL11</i>	ILMN_1149	NM_016050.2	-0.570694775	0.865336827	0.00253789

<i>LRP5L</i>	ILMN_650	NM_182492.1	-0.571430915	0.921914449	0.00039107
<i>PIK4CB</i>	ILMN_21393	NM_002651.1	-0.571689076	0.741826102	0.00464515
<i>KRT10</i>	ILMN_1890	NM_000421.2	-0.572172093	0.728055479	0.00436014
<i>ZNF263</i>	ILMN_13327	NM_005741.3	-0.575435129	0.969416741	0.00028422
<i>BCL2</i>	ILMN_3868	NM_000633.2	-0.575548572	0.844473447	0.00325378
<i>PIGT</i>	ILMN_19969	NM_015937.2	-0.576433969	1.161501121	0.00048774
<i>INOC1</i>	ILMN_5093	NM_032196.3	-0.576917795	0.755514595	0.00583012
<i>SFRS12</i>	ILMN_8967	NM_139168.1	-0.580161358	0.658939464	0.00926378
<i>IXL</i>	ILMN_10710	NM_017592.1	-0.580304926	0.950420241	0.00014253
<i>C14orf138</i>	ILMN_29130	NM_024558.1	-0.582713642	0.960895284	0.00335093
<i>SFRS8</i>	ILMN_9797	NM_004592.2	-0.585074071	1.347585696	0.00022540
<i>SYNCRIP</i>	ILMN_28470	NM_006372.3	-0.585172097	1.087116066	0.00311096
<i>RPS19BP1</i>	ILMN_8107	NM_194326.2	-0.585338721	0.845933847	0.00365128
<i>MAP4K5</i>	ILMN_10246	NM_006575.3	-0.58540163	0.829097844	0.00757634
<i>SUV420H1</i>	ILMN_29861	NM_016028.4	-0.58748649	1.378314577	0.00035114
<i>C1orf35</i>	ILMN_28904	NM_024319.2	-0.587897505	0.957215804	0.00130979
<i>ZBTB20</i>	ILMN_27339	NM_015642.2	-0.588916852	0.772194348	0.00270763
<i>GATS</i>	ILMN_18755	NM_178831.4	-0.589908263	0.711683709	0.00449993
<i>PMPCA</i>	ILMN_21420	NM_015160.1	-0.590865296	1.347090479	0.00013962
<i>DDX27</i>	ILMN_20732	NM_017895.6	-0.590934524	0.712906638	0.00573165
<i>KPNA4</i>	ILMN_21107	NM_002268.3	-0.591097414	0.764231033	0.00709542
<i>LRIG2</i>	ILMN_7215	NM_014813.1	-0.591763549	1.000300389	0.00098919
<i>ADNP</i>	ILMN_19803	NM_181442.1	-0.593035819	1.062015792	0.00007631
<i>ZDHHC5</i>	ILMN_28354	NM_015457.2	-0.594136352	0.973921694	0.00091996
<i>BAP1</i>	ILMN_17024	NM_004656.2	-0.594422282	1.015586606	0.00133679
<i>TATDN2</i>	ILMN_8206	NM_014760.2	-0.594767207	1.201800357	0.00004238
<i>AZIN1</i>	ILMN_4825	NM_015878.4	-0.595459472	0.919861629	0.00489867
<i>RPS6KB1</i>	ILMN_1872	NM_003161.2	-0.595631327	1.004764715	0.00628176
<i>AZI1</i>	ILMN_3856	NM_014984.1	-0.596227296	1.182177661	0.00048784
<i>LRRC8A</i>	ILMN_18635	NM_019594.2	-0.596405887	0.885748941	0.00277366
<i>RBM13</i>	ILMN_18111	NM_032509.2	-0.596437358	0.973597748	0.00014306

<i>ZNF26</i>	ILMN_3233	NM_019591.2	-0.59830862	0.853992606	0.00339823
<i>KDELC2</i>	ILMN_23677	NM_153705.2	-0.600616412	1.052805945	0.00022644
<i>KIAA1530</i>	ILMN_958	NM_020894.1	-0.602437968	1.261110975	0.00010936
<i>FAU</i>	ILMN_3073	NM_001997.3	-0.602457622	1.036010219	0.00001407
<i>C8orf33</i>	ILMN_15901	NM_023080.1	-0.603252646	1.414514982	0.00026532
<i>SEMA4D</i>	ILMN_24615	NM_006378.2	-0.603394443	0.861269484	0.00139078
<i>DKFZp761I2123</i>	ILMN_4684	NM_031449.3	-0.604000476	0.903562568	0.00721373
<i>KIAA1542</i>	ILMN_22314	NM_020901.1	-0.604016318	0.830834961	0.00079312
<i>NARF</i>	ILMN_138328	NM_031968.1	-0.60417202	0.883103921	0.00757037
<i>CRAMP1L</i>	ILMN_12672	NM_020825.2	-0.604341887	1.164221816	0.00019481
<i>RASA2</i>	ILMN_15489	NM_006506.2	-0.605237893	0.88103833	0.00727633
<i>IL12A</i>	ILMN_28240	NM_000882.2	-0.605767267	0.706673327	0.00764865
<i>RNPEPL1</i>	ILMN_18851	NM_018226.3	-0.605977149	0.907204305	0.00144612
<i>C3orf19</i>	ILMN_13337	NM_016474.3	-0.606982737	0.935698555	0.00150798
<i>TSSC4</i>	ILMN_17177	NM_005706.2	-0.607164855	1.028524623	0.00063006
<i>DOCK10</i>	ILMN_15188	NM_014689.1	-0.610185033	0.927657427	0.00070649
<i>QRICH1</i>	ILMN_22436	NM_017730.2	-0.611913915	1.527494986	0.00015097
<i>ZNF622</i>	ILMN_1143	NM_033414.2	-0.613218062	1.414248597	0.00002261
<i>ZNF416</i>	ILMN_13535	NM_017879.1	-0.613628233	0.700755649	0.00915879
<i>PDRG1</i>	ILMN_20546	NM_030815.2	-0.614441842	1.064193414	0.00435025
<i>C20orf3</i>	ILMN_2205	NM_020531.2	-0.614571123	0.768684462	0.00967519
<i>ZNF529</i>	ILMN_24517	NM_020951.1	-0.614692228	0.785446095	0.00106414
<i>TP53I13</i>	ILMN_23391	NM_138349.2	-0.616381148	0.729544257	0.00769178
<i>MBTPS1</i>	ILMN_5443	NM_201268.1	-0.617123097	0.888166037	0.00240723
<i>TROVE2</i>	ILMN_4319	NM_004600.3	-0.617753128	0.673186701	0.00774056
<i>TUBGCP5</i>	ILMN_25939	NM_052903.2	-0.617898874	0.889360861	0.00042017
<i>MRPL55</i>	ILMN_467	NM_181464.1	-0.618983592	0.811107318	0.00119417
<i>CUL2</i>	ILMN_26940	NM_003591.2	-0.61974505	1.127957039	0.00054435
<i>ZNF76</i>	ILMN_6486	NM_003427.3	-0.620226015	1.171212418	0.00092501
<i>C4orf9</i>	ILMN_10925	NM_003703.1	-0.620535032	1.215629606	0.00038208
<i>KIAA1958</i>	ILMN_17353	NM_133465.1	-0.621349152	0.972702081	0.00872690

<i>TAF1C</i>	ILMN_4122	NM_139353.1	-0.622990892	1.445562625	0.00002040
<i>IDS</i>	ILMN_2023	NM_000202.2	-0.62329983	0.900843185	0.00072718
<i>PRAF1</i>	ILMN_2978	NM_022490.1	-0.623820785	1.032997273	0.00096113
<i>C20orf29</i>	ILMN_7561	NM_018347.1	-0.624761404	1.125534915	0.00062872
<i>GATAD2A</i>	ILMN_1801	NM_017660.2	-0.625589049	1.147481763	0.00011571
<i>ACACB</i>	ILMN_3318	NM_001093.2	-0.626024408	1.038757802	0.00759206
<i>ARHGDI1</i>	ILMN_15874	NM_004309.3	-0.628056706	0.95971498	0.00078607
<i>RBKS</i>	ILMN_21205	NM_022128.1	-0.629280777	1.243196703	0.00029184
<i>GMEB1</i>	ILMN_14071	NM_006582.2	-0.630458154	1.010146742	0.00544840
<i>KIAA0179</i>	ILMN_14288	NM_015056.1	-0.631285034	0.926908086	0.00071174
<i>C17orf48</i>	ILMN_6506	NM_020233.3	-0.631507612	1.435374244	0.00003101
<i>HNRPL</i>	ILMN_5928	NM_001533.2	-0.631636976	0.705438767	0.00325831
<i>PTPN1</i>	ILMN_5417	NM_002827.2	-0.633813993	0.776627472	0.00670939
<i>IRF2BP1</i>	ILMN_6522	NM_015649.1	-0.635292951	0.890038121	0.00457907
<i>WBSCR22</i>	ILMN_26330	NM_017528.2	-0.636188587	0.878022756	0.00081436
<i>LOC91431</i>	ILMN_26207	NM_138698.2	-0.63820878	0.657348609	0.00926809
<i>PAQR3</i>	ILMN_20371	NM_177453.2	-0.640215369	0.683823498	0.00569143
<i>HSF2</i>	ILMN_3760	NM_004506.2	-0.640864075	0.758861543	0.00229860
<i>GUK1</i>	ILMN_18191	NM_000858.4	-0.640890663	1.421767573	0.00002100
<i>BRF2</i>	ILMN_2966	NM_018310.2	-0.641792347	0.712970641	0.00941033
<i>LOC440348</i>	ILMN_12371	NM_001018059.1	-0.643288377	0.836871612	0.00364941
<i>PRRT3</i>	ILMN_19313	NM_207351.2	-0.644537989	0.90258133	0.00073831
<i>H1FX</i>	ILMN_26614	NM_006026.2	-0.645743275	0.726455223	0.00562703
<i>HSPA5</i>	ILMN_16546	NM_005347.2	-0.645854429	1.044504608	0.00076007
<i>USP7</i>	ILMN_3791	NM_003470.1	-0.645861103	0.765032434	0.00861637
<i>RAGE</i>	ILMN_5109	NM_014226.1	-0.646248862	0.816833521	0.00096010
<i>HEAB</i>	ILMN_17235	NM_006831.1	-0.647356002	0.95592989	0.00728557
<i>CCDC59</i>	ILMN_12564	NM_014167.1	-0.649844073	0.844038281	0.00199060
<i>UBE2B</i>	ILMN_19013	NM_003337.2	-0.650171493	0.856337935	0.00054149
<i>TMEM1</i>	ILMN_9744	NM_003274.3	-0.650272701	1.006083249	0.00003470
<i>CXXC5</i>	ILMN_10449	NM_016463.5	-0.650664893	0.600426859	0.00854733

<i>SRRM1</i>	ILMN_2484	NM_005839.2	-0.650793883	1.344938502	0.00013658
<i>SFRS3</i>	ILMN_29649	NM_003017.3	-0.653578545	0.999498208	0.00997300
<i>PDCL3</i>	ILMN_30010	NM_024065.3	-0.654245679	0.941531099	0.00056039
<i>PRR3</i>	ILMN_21022	NM_025263.1	-0.654275478	1.237039594	0.00302803
<i>BTAF1</i>	ILMN_8616	NM_003972.2	-0.655041764	2.000675247	0.00000148
<i>LAS1L</i>	ILMN_10798	NM_031206.2	-0.655593111	1.230989934	0.00176207
<i>SLC6A16</i>	ILMN_10688	NM_014037.2	-0.656717923	0.83343565	0.00328586
<i>PIM2</i>	ILMN_27932	NM_006875.2	-0.657356732	0.93398096	0.00120534
<i>KIAA1600</i>	ILMN_8082	NM_020940.2	-0.657609423	0.858231585	0.00665377
<i>EXOSC2</i>	ILMN_11049	NM_014285.4	-0.658469055	0.89439764	0.00137281
<i>C6orf149</i>	ILMN_18141	NM_020408.3	-0.658551633	0.968041299	0.00207399
<i>NUDT16L1</i>	ILMN_20270	NM_032349.2	-0.658754939	1.000965634	0.00011280
<i>PQLC1</i>	ILMN_5626	NM_025078.3	-0.658826711	1.46688705	0.00003286
<i>TMC6</i>	ILMN_19035	NM_007267.5	-0.659317538	0.988841774	0.00146505
<i>SH3BP4</i>	ILMN_138674	NM_014521.1	-0.659423978	1.080747687	0.00307405
<i>C21orf66</i>	ILMN_15558	NM_013329.2	-0.660169817	1.360744855	0.00011543
<i>RPL26</i>	ILMN_139337	NM_000987.2	-0.660388215	0.838265035	0.00102103
<i>JMJD2B</i>	ILMN_2379	NM_015015.1	-0.660517636	0.764706358	0.00767484
<i>ZNF431</i>	ILMN_7008	NM_133473.1	-0.660741637	0.982149669	0.00093699
<i>DGCR14</i>	ILMN_694	NM_022719.1	-0.661198685	0.947293749	0.00241510
<i>TEF</i>	ILMN_7440	NM_003216.2	-0.66136378	1.177478992	0.00011265
<i>POLE</i>	ILMN_18431	NM_006231.2	-0.662672826	0.871053439	0.00362261
<i>CRKRS</i>	ILMN_9786	NM_016507.1	-0.663155806	1.024487964	0.00038030
<i>LMNB2</i>	ILMN_24712	NM_032737.2	-0.663422716	0.819620917	0.00522630
<i>PPAN</i>	ILMN_25948	NM_020230.4	-0.663459334	0.811996002	0.00656122
<i>TRAF6</i>	ILMN_8846	NM_004620.2	-0.664832171	1.183856973	0.00145782
<i>ZNF238</i>	ILMN_5128	NM_205768.1	-0.66538502	1.063282	0.00121218
<i>DIP13B</i>	ILMN_139404	NM_018171.2	-0.665918599	0.816448496	0.00182992
<i>C1orf122</i>	ILMN_26311	NM_198446.1	-0.667704514	0.758544159	0.00554261
<i>WDR79</i>	ILMN_1814	NM_018081.1	-0.66887631	1.103656742	0.00682748
<i>ZNF75A</i>	ILMN_3468	NM_153028.1	-0.668953048	0.77004373	0.00387346

EBPL	ILMN_18169	NM_032565.1	-0.669087401	0.948622616	0.00047601
SUV39H1	ILMN_6133	NM_003173.1	-0.670194855	0.975895869	0.00028897
MORC4	ILMN_5233	NM_024657.2	-0.670720191	1.081812244	0.00034502
RHOT2	ILMN_21353	NM_138769.1	-0.67287188	0.718635543	0.00588322
LSM5	ILMN_17896	NM_012322.1	-0.673056964	1.1919698	0.00001152
ZNF35	ILMN_15315	NM_003420.2	-0.676575556	1.219238883	0.00088914
IHPK1	ILMN_1661	NM_153273.3	-0.677703526	0.844737234	0.00342912
NOLA1	ILMN_137056	NM_032993.1	-0.677952037	1.201625866	0.00010415
ZNF545	ILMN_15084	NM_133466.1	-0.678360671	0.857507765	0.00077872
SCMH1	ILMN_5778	NM_001031694.1	-0.678476927	1.088681731	0.00117579
XPO4	ILMN_11492	NM_022459.3	-0.678501648	1.075202138	0.00048775
CCDC69	ILMN_12667	NM_015621.2	-0.680078881	0.782969982	0.00618847
CALM1	ILMN_137303	NM_006888.2	-0.680552658	0.845807834	0.00246513
C21orf57	ILMN_21121	NM_058181.1	-0.683310928	0.78631219	0.00469043
RANBP3	ILMN_27457	NM_003624.1	-0.683827258	0.90891312	0.00063720
ZNF142	ILMN_11618	NM_005081.2	-0.684025915	1.286496115	0.00001617
CBLL1	ILMN_24021	NM_024814.1	-0.68419063	0.883478823	0.00615600
OTUD5	ILMN_8231	NM_017602.2	-0.684681416	0.824341727	0.00517850
C14orf4	ILMN_23475	NM_024496.2	-0.684736533	1.011836565	0.00048207
PP2447	ILMN_25172	NM_025204.2	-0.684755437	1.569550738	0.00005516
USP14	ILMN_137727	NM_005151.2	-0.684905707	0.865550813	0.00568072
SEC61B	ILMN_446	NM_006808.2	-0.687486258	0.670776632	0.00406423
RNF126	ILMN_5287	NM_194460.1	-0.68765419	1.014174257	0.00203408
OFD1	ILMN_10088	NM_003611.1	-0.687787909	0.825117046	0.00356926
RENT1	ILMN_138046	NM_002911.2	-0.687855528	0.699664811	0.00739681
ZNF17	ILMN_13772	NM_006959.1	-0.688040083	0.670592008	0.00734045
UBR1	ILMN_137462	NM_174916.1	-0.688734037	1.016853169	0.00193488
LTBP4	ILMN_21051	NM_003573.1	-0.690128055	0.744259013	0.00665099
DNMT3A	ILMN_26218	NM_175630.1	-0.690260033	1.570643653	0.00000747
GNL1	ILMN_3133	NM_005275.2	-0.691657668	1.02612133	0.00132046
ARID3B	ILMN_4032	NM_006465.1	-0.691793692	0.977354302	0.00033123

<i>LEPROTL1</i>	ILMN_4515	NM_015344.1	-0.691937884	0.806940218	0.00299727
<i>GRPEL1</i>	ILMN_7749	NM_025196.2	-0.692082354	1.001336975	0.00070527
<i>CSG1cA-T</i>	ILMN_21838	NM_019015.1	-0.694221557	1.127669784	0.00026213
<i>GCC1</i>	ILMN_21168	NM_024523.5	-0.6951262	1.366586368	0.00003783
<i>RAD23B</i>	ILMN_19346	NM_002874.3	-0.695226728	1.102097779	0.00406715
<i>LOC93081</i>	ILMN_8559	NM_138779.2	-0.695301754	0.760850692	0.00280824
<i>FLJ10374</i>	ILMN_3627	NM_018074.3	-0.695464213	1.079974637	0.00457030
<i>C17orf53</i>	ILMN_17950	NM_024032.2	-0.696635685	1.255525354	0.00366275
<i>NCK2</i>	ILMN_8369	NM_003581.2	-0.696808439	0.886780127	0.00135857
<i>C20orf52</i>	ILMN_15797	NM_080748.1	-0.699212306	0.622463785	0.00379560
<i>MLF1IP</i>	ILMN_16700	NM_024629.2	-0.699384768	0.862592142	0.00813547
<i>ZNF549</i>	ILMN_12970	NM_153263.1	-0.699401199	0.741164155	0.00389691
<i>CLYBL</i>	ILMN_27821	NM_206808.1	-0.699524111	1.250909264	0.00053328
<i>ZNF136</i>	ILMN_7813	NM_003437.2	-0.700419265	0.833346179	0.00189626
<i>STXBP5</i>	ILMN_3767	NM_139244.2	-0.704314781	1.232465712	0.00019410
<i>ALG9</i>	ILMN_22873	NM_024740.1	-0.70462799	0.927910229	0.00503792
<i>ZNF426</i>	ILMN_13082	NM_024106.1	-0.705339858	0.961994526	0.00367733
<i>DENND4C</i>	ILMN_2455	NM_017925.3	-0.705529703	1.146949146	0.00115710
<i>EIF1</i>	ILMN_3037	NM_005801.3	-0.70553125	0.947529023	0.00032097
<i>KLHL21</i>	ILMN_14418	NM_014851.2	-0.706027126	0.898564478	0.00204385
<i>ANK3</i>	ILMN_2714	NM_001149.2	-0.706311526	0.911010591	0.00141958
<i>MPP6</i>	ILMN_28432	NM_016447.2	-0.707177805	0.740970318	0.00083022
<i>CCL28</i>	ILMN_1615	NM_019846.3	-0.708252508	1.273210594	0.00046153
<i>SNTA1</i>	ILMN_4031	NM_003098.2	-0.708334717	0.978312341	0.00055783
<i>TARBP1</i>	ILMN_14414	NM_005646.2	-0.709611231	0.976054013	0.00211269
<i>JARID1A</i>	ILMN_12150	NM_005056.1	-0.711271184	1.01467053	0.00143321
<i>C20orf149</i>	ILMN_21879	NM_024299.2	-0.711320456	0.814646204	0.00387198
<i>PILRB</i>	ILMN_1984	NM_175047.2	-0.712138848	0.731016965	0.00355462
<i>TERF1</i>	ILMN_11986	NM_017489.1	-0.712178428	0.990225787	0.00113241
<i>MSI2</i>	ILMN_525	NM_138962.2	-0.712606214	1.035281345	0.00176819
<i>MRPS18A</i>	ILMN_2508	NM_018135.2	-0.714481425	1.271085307	0.00053144

<i>C3orf39</i>	ILMN_2070	NM_032806.4	-0.714496822	1.136707686	0.00013448
<i>PCSK5</i>	ILMN_6597	NM_006200.2	-0.715939114	1.036876117	0.00035864
<i>DPP9</i>	ILMN_26244	NM_139159.3	-0.716419901	0.912894052	0.00060259
<i>EDD1</i>	ILMN_11309	NM_015902.4	-0.716696292	2.001580199	0.00003324
<i>C16orf7</i>	ILMN_693	NM_004913.1	-0.717368103	0.922793072	0.00483044
<i>SLC2A4RG</i>	ILMN_11640	NM_020062.3	-0.717939345	0.844967139	0.00210980
<i>SBF1</i>	ILMN_22729	NM_002972.1	-0.719573729	0.872216344	0.00261564
<i>N4BP2</i>	ILMN_7118	NM_018177.2	-0.720407286	0.643502768	0.00329044
<i>CCNK</i>	ILMN_4502	NM_003858.2	-0.72058077	1.458689467	0.00010225
<i>EHD1</i>	ILMN_17263	NM_006795.2	-0.720719364	0.766609451	0.00483019
<i>BANP</i>	ILMN_8638	NM_079837.1	-0.722372231	0.865374603	0.00546821
<i>TNIP2</i>	ILMN_6730	NM_024309.2	-0.72274032	1.019287814	0.00361216
<i>ZNF274</i>	ILMN_6185	NM_016324.2	-0.723234244	1.165667625	0.00001985
<i>STAT5B</i>	ILMN_16004	NM_012448.3	-0.724319615	0.858281253	0.00926193
<i>ASB6</i>	ILMN_13316	NM_177999.1	-0.72611613	0.921960087	0.00553967
<i>NY-SAR-48</i>	ILMN_2230	NM_001011699.1	-0.727033786	1.317919304	0.00086801
<i>U2AF1L3</i>	ILMN_8757	NM_144987.1	-0.72871967	1.092424247	0.00016495
<i>CEBPZ</i>	ILMN_10421	NM_005760.2	-0.72887728	0.967945932	0.00257282
<i>SNRPA1</i>	ILMN_1523	NM_003090.2	-0.729357658	1.157672317	0.00072721
<i>ZNF593</i>	ILMN_20499	NM_015871.2	-0.729711215	0.870749371	0.00144956
<i>DLNB14</i>	ILMN_6803	NM_198489.1	-0.7305056	1.233687869	0.00130973
<i>ACOT4</i>	ILMN_5812	NM_152331.2	-0.730543719	0.709395594	0.00449761
<i>PARC</i>	ILMN_14183	NM_015089.2	-0.730864807	0.732382684	0.00622436
<i>AYTL2</i>	ILMN_15076	NM_024830.3	-0.731746218	1.019606414	0.00177154
<i>MLL4</i>	ILMN_28047	NM_014727.1	-0.732461775	0.926478158	0.00075914
<i>ABCF1</i>	ILMN_6938	NM_001090.2	-0.732508988	1.080306669	0.00095497
<i>ATG9A</i>	ILMN_24497	NM_024085.2	-0.733386266	0.893550371	0.00569509
<i>C1orf33</i>	ILMN_1930	NM_016183.2	-0.735053733	1.273787628	0.00058830
<i>PLEKHG4</i>	ILMN_11658	NM_015432.2	-0.735675634	0.781101106	0.00809126
<i>CYLD</i>	ILMN_28818	NM_015247.1	-0.735700277	0.925754857	0.00099722
<i>ACRC</i>	ILMN_21976	NM_052957.2	-0.736674197	0.993429353	0.00204543

<i>UXT</i>	ILMN_2795	NM_004182.2	-0.736776229	1.01746461	0.00008724
<i>MYH3</i>	ILMN_20953	NM_002470.1	-0.737874135	1.01897372	0.00311632
<i>DDX39</i>	ILMN_19976	NM_005804.2	-0.738861267	1.494534945	0.00001645
<i>PRKCA</i>	ILMN_24085	NM_002737.2	-0.74026775	1.830687543	0.00002155
<i>LOC55565</i>	ILMN_22894	NM_017530.1	-0.740330872	1.103927452	0.00127144
<i>PARP15</i>	ILMN_3312	NM_152615.1	-0.740519502	0.59182088	0.00922714
<i>UBE2J1</i>	ILMN_12301	NM_016021.2	-0.741117847	1.006081046	0.00022877
<i>LCMT2</i>	ILMN_7283	NM_014793.3	-0.74274383	0.744741119	0.00146696
<i>bA16L21.2.1</i>	ILMN_13855	NM_001015882.1	-0.742794207	0.714961107	0.00950935
<i>ELL</i>	ILMN_23957	NM_006532.2	-0.742801328	0.941853782	0.00238549
<i>NARG1</i>	ILMN_16240	NM_057175.3	-0.743022897	0.99023172	0.00691777
<i>NELF</i>	ILMN_28709	NM_015537.3	-0.743522541	0.667130343	0.00722468
<i>FOXP1</i>	ILMN_20586	NM_032682.4	-0.744323801	1.338638759	0.00012440
<i>KBTBD2</i>	ILMN_2507	NM_015483.1	-0.745628316	1.151680836	0.00011902
<i>HMGCS1</i>	ILMN_18980	NM_002130.4	-0.748106632	1.188287026	0.00046412
<i>TAF5L</i>	ILMN_6872	NM_014409.3	-0.749085176	0.868547839	0.00092389
<i>RNF138</i>	ILMN_587	NM_016271.3	-0.752277852	1.235057135	0.00009252
<i>EID3</i>	ILMN_22737	NM_001008394.1	-0.753211703	0.983834177	0.00177572
<i>BTBD6</i>	ILMN_28665	NM_033271.1	-0.753404502	1.357730493	0.00020193
<i>ELK4</i>	ILMN_16457	NM_021795.2	-0.755005589	0.67188118	0.00715763
<i>TPST1</i>	ILMN_2477	NM_003596.2	-0.755507792	1.228445923	0.00011312
<i>RG9MTD1</i>	ILMN_26970	NM_017819.1	-0.756251186	0.997215873	0.00046399
<i>HYPE</i>	ILMN_24815	NM_007076.2	-0.756371069	1.076873012	0.00190176
<i>SNX26</i>	ILMN_12508	NM_052948.2	-0.758065079	0.8931702	0.00074244
<i>CAMK1G</i>	ILMN_28359	NM_020439.2	-0.758706082	0.831151411	0.00712541
<i>TOPORS</i>	ILMN_20252	NM_005802.2	-0.759046826	1.053204205	0.00024076
<i>PRSS15</i>	ILMN_5804	NM_004793.2	-0.759266614	0.907428592	0.00120227
<i>TUBA1</i>	ILMN_20363	NM_006000.1	-0.760742973	0.712101421	0.00570485
<i>RPL37A</i>	ILMN_137134	NM_000998.3	-0.760816832	0.867875221	0.00096298
<i>MADD</i>	ILMN_9428	NM_130471.1	-0.763259324	0.924374443	0.00427367
<i>MIF</i>	ILMN_26688	NM_002415.1	-0.763324033	0.748772869	0.00266627

<i>UBE2O</i>	ILMN_17049	NM_022066.2	-0.763507156	1.161334399	0.00644586
<i>FLJ44216</i>	ILMN_16903	NM_198567.1	-0.764370213	0.90170466	0.00705292
<i>RBJ</i>	ILMN_30155	NM_016544.1	-0.76469689	0.978556237	0.00239779
<i>STAT4</i>	ILMN_8937	NM_003151.2	-0.765414901	0.907546517	0.00158587
<i>ELK4</i>	ILMN_7899	NM_001973.2	-0.765582106	1.085812566	0.00565791
<i>YPEL5</i>	ILMN_8828	NM_016061.1	-0.765651622	0.877344177	0.00894663
<i>ZNF548</i>	ILMN_16141	NM_152909.2	-0.766023955	0.9212858	0.00022428
<i>VPS11</i>	ILMN_13229	NM_021729.4	-0.766315738	1.106426752	0.00010581
<i>SAV1</i>	ILMN_15731	NM_021818.2	-0.767096079	0.888541282	0.00128585
<i>ZNF447</i>	ILMN_16020	NM_023926.3	-0.768713349	0.826659263	0.00080815
<i>EYA3</i>	ILMN_23590	NM_172098.1	-0.769040512	0.942443665	0.00038469
<i>MESDC1</i>	ILMN_18570	NM_022566.1	-0.770159479	1.08221592	0.00685104
<i>EML4</i>	ILMN_21821	NM_019063.2	-0.771210818	0.785648246	0.00704352
<i>RBM12</i>	ILMN_3104	NM_006047.4	-0.773445395	1.256818095	0.00004835
<i>SUPT3H</i>	ILMN_4557	NM_003599.1	-0.775989516	0.790995011	0.00654034
<i>PELO</i>	ILMN_19741	NM_015946.4	-0.777913817	0.828611002	0.00586600
<i>C17orf63</i>	ILMN_5219	NM_018182.1	-0.779026498	1.527509018	0.00000522
<i>NFKBIA</i>	ILMN_6745	NM_020529.1	-0.780491608	0.650591266	0.00530786
<i>SLC20A2</i>	ILMN_29659	NM_006749.3	-0.782979975	1.033443966	0.00285246
<i>TDP1</i>	ILMN_12296	NM_018319.3	-0.783501996	1.750778225	0.00003375
<i>ZBTB25</i>	ILMN_7193	NM_006977.2	-0.783772367	1.293682365	0.00001214
<i>TRAPPC6A</i>	ILMN_1174	NM_024108.1	-0.783976007	0.952296907	0.00066233
<i>PPIE</i>	ILMN_13734	NM_203456.1	-0.784546972	0.738368064	0.00695734
<i>RAD54L2</i>	ILMN_30244	NM_015106.1	-0.785402093	1.01822683	0.00082883
<i>DKFZp434K1815</i>	ILMN_12314	NM_152892.1	-0.786393593	1.017330098	0.00076794
<i>SFI1</i>	ILMN_23938	NM_014775.2	-0.786495819	1.077617495	0.00192246
<i>GPATC4</i>	ILMN_839	NM_182679.1	-0.787986184	1.138781761	0.00084221
<i>SKIV2L</i>	ILMN_646	NM_006929.4	-0.789248907	1.727502765	0.00001265
<i>LUZP1</i>	ILMN_2667	NM_033631.2	-0.796097071	0.967871182	0.00268820
<i>MNT</i>	ILMN_21283	NM_020310.2	-0.7978727	1.20884313	0.00070966
<i>BRPF3</i>	ILMN_8164	NM_015695.1	-0.798153286	1.272715574	0.00000760

<i>PRDM4</i>	ILMN_1579	NM_012406.3	-0.79826194	1.253362778	0.00020244
<i>NFKBIZ</i>	ILMN_16362	NM_001005474.1	-0.800584648	0.745885878	0.00925134
<i>STAG3</i>	ILMN_28713	NM_012447.2	-0.801293102	0.803248924	0.00395595
<i>SFPQ</i>	ILMN_5703	NM_005066.1	-0.802153677	0.928784898	0.00036238
<i>TWISTNB</i>	ILMN_24604	NM_001002926.1	-0.802196716	1.019362059	0.00157788
<i>CITED4</i>	ILMN_15271	NM_133467.2	-0.803333157	0.992074124	0.00086738
<i>DOCK9</i>	ILMN_12914	NM_015296.1	-0.805523629	1.147821312	0.00005151
<i>CTRL</i>	ILMN_21415	NM_001907.1	-0.806071732	0.807620012	0.00331623
<i>UBXD4</i>	ILMN_23019	NM_181713.3	-0.807345562	0.860528095	0.00123436
<i>RALGDS</i>	ILMN_9432	NM_006266.2	-0.807833401	0.996741813	0.00054221
<i>DKFZp686L1814</i>	ILMN_26192	NM_194282.1	-0.808475893	1.037713738	0.00023363
<i>PXN</i>	ILMN_14932	NM_002859.1	-0.809403238	0.809655666	0.00041816
<i>C9orf28</i>	ILMN_20760	NM_033446.1	-0.809751743	0.803182923	0.00936620
<i>IL4R</i>	ILMN_17789	NM_000418.2	-0.810302045	0.973385568	0.00071234
<i>RPL13</i>	ILMN_2271	NM_033251.1	-0.810746203	1.137734142	0.00006465
<i>TXNDC11</i>	ILMN_17937	NM_015914.5	-0.810961885	1.01531958	0.00912042
<i>ZXDB</i>	ILMN_4827	NM_007157.3	-0.812239002	1.025037862	0.00016710
<i>ABCB1</i>	ILMN_7395	NM_000927.3	-0.813841941	0.830184605	0.00187186
<i>SLC10A3</i>	ILMN_4203	NM_019848.2	-0.814201516	0.77976641	0.00419819
<i>GFPT1</i>	ILMN_5797	NM_002056.1	-0.815838939	1.010349776	0.00913416
<i>YAF2</i>	ILMN_19509	NM_001012424.1	-0.817039087	1.544588783	0.00007635
<i>CRTC2</i>	ILMN_28825	NM_181715.1	-0.819154628	1.149987942	0.00102618
<i>GSPT1</i>	ILMN_5039	NM_002094.1	-0.819395045	1.123312625	0.00198255
<i>FLJ31204</i>	ILMN_14285	NM_174912.2	-0.82136343	1.204204377	0.00070829
<i>POMT1</i>	ILMN_18145	NM_007171.2	-0.821400025	0.961685443	0.00626720
<i>FLJ38964</i>	ILMN_22580	NM_173527.1	-0.821475189	1.096974111	0.00212659
<i>TBC1D15</i>	ILMN_20610	NM_022771.3	-0.821648635	1.158524645	0.00067360
<i>AXIN1</i>	ILMN_6274	NM_181050.1	-0.822583751	0.790015272	0.00511492
<i>FKBP11</i>	ILMN_14765	NM_016594.1	-0.823000352	0.74672709	0.00267008
<i>KIAA0961</i>	ILMN_26156	NM_014898.1	-0.824726521	1.080504235	0.00146065
<i>PLEKHG2</i>	ILMN_4000	NM_022835.1	-0.825611045	1.267875781	0.00079500

<i>C20orf11</i>	ILMN_27220	NM_017896.2	-0.827007513	1.128744745	0.00003984
<i>PIAS2</i>	ILMN_11074	NM_173206.2	-0.830152143	1.456467935	0.00131011
<i>RUNX3</i>	ILMN_16236	NM_004350.1	-0.830408072	1.178110719	0.00021931
<i>RAPGEF6</i>	ILMN_6036	NM_016340.3	-0.830860715	0.719502179	0.00450501
<i>HPS4</i>	ILMN_5996	NM_152843.1	-0.831101249	1.850462398	0.00002616
<i>ATP2C1</i>	ILMN_16216	NM_014382.2	-0.8314472	1.496804384	0.00032372
<i>MPP5</i>	ILMN_21733	NM_022474.2	-0.831785694	1.231105814	0.00021771
<i>EBI2</i>	ILMN_5986	NM_004951.3	-0.832449329	0.736312502	0.00715280
<i>CCDC58</i>	ILMN_27140	NM_001017928.2	-0.833159452	1.090267998	0.00039098
<i>ZNF101</i>	ILMN_10157	NM_033204.2	-0.835053726	0.883406529	0.00125971
<i>CCDC45</i>	ILMN_24620	NM_138363.1	-0.83514053	1.715922417	0.00000317
<i>DGKD</i>	ILMN_2079	NM_152879.2	-0.837081703	1.214349576	0.00006287
<i>JUND</i>	ILMN_29325	NM_005354.2	-0.839529854	1.44576351	0.00000068
<i>CALR</i>	ILMN_18909	NM_004343.2	-0.840122952	0.980075778	0.00025069
<i>ASNS</i>	ILMN_14195	NM_133436.1	-0.840850315	1.139496001	0.00001648
<i>IPO4</i>	ILMN_26191	NM_024658.3	-0.841511864	1.222419638	0.00002488
<i>MOAP1</i>	ILMN_10935	NM_022151.4	-0.841645123	1.343199607	0.00008726
<i>MGC40579</i>	ILMN_6451	NM_152776.1	-0.842645626	0.934865684	0.00247629
<i>ERCC5</i>	ILMN_13388	NM_000123.2	-0.843937201	1.129758717	0.00031986
<i>CIB1</i>	ILMN_11794	NM_006384.2	-0.844079627	1.058491226	0.00150153
<i>C14orf169</i>	ILMN_4108	NM_024644.1	-0.845960892	1.269502867	0.00002600
<i>ALDOC</i>	ILMN_15767	NM_005165.2	-0.845999485	1.06749991	0.00086194
<i>LOC56902</i>	ILMN_26243	NM_020143.2	-0.846100126	0.754187475	0.00240439
<i>RRM1</i>	ILMN_14789	NM_001033.2	-0.846190811	0.88356385	0.00601741
<i>C14orf32</i>	ILMN_24999	NM_144578.2	-0.8467791	1.110496493	0.00648758
<i>ZNF484</i>	ILMN_2513	NM_031486.1	-0.847260349	0.983148562	0.00087595
<i>DNAJB2</i>	ILMN_137328	NM_006736.4	-0.847437659	1.454772657	0.00000649
<i>SBDS</i>	ILMN_15766	NM_016038.2	-0.847947777	0.599100733	0.00910234
<i>LITAF</i>	ILMN_7898	NM_004862.2	-0.848079954	1.064922674	0.00250002
<i>SNRK</i>	ILMN_5234	NM_017719.3	-0.849034935	1.225928527	0.00032831
<i>DPP4</i>	ILMN_20248	NM_001935.3	-0.849217133	0.77184925	0.00411250

<i>TFRC</i>	ILMN_12909	NM_003234.1	-0.84942199	1.14393614	0.00014138
<i>CACNA2D2</i>	ILMN_15989	NM_001005505.1	-0.849869058	0.79755057	0.00438546
<i>MAP6D1</i>	ILMN_7455	NM_024871.1	-0.85096354	1.037983445	0.00367303
<i>MGC4728</i>	ILMN_1981	NM_198542.1	-0.851368338	1.04653516	0.00004789
<i>HSPC176</i>	ILMN_26849	NM_016209.1	-0.852041704	1.178838591	0.00001505
<i>DNAJB1</i>	ILMN_19740	NM_006145.1	-0.852508634	0.85068799	0.00581678
<i>COCH</i>	ILMN_7401	NM_004086.1	-0.853301185	1.006291485	0.00224105
<i>ST6GALNAC4</i>	ILMN_137977	NM_175040.1	-0.854315521	1.779605121	0.00000418
<i>FOXP1</i>	ILMN_21389	NM_001012505.1	-0.854606153	1.423320073	0.00019417
<i>ZNF324</i>	ILMN_29920	NM_014347.1	-0.856946591	0.781397595	0.00557212
<i>RPS7</i>	ILMN_10275	NM_001011.3	-0.856988557	0.802701927	0.00150351
<i>ZBED4</i>	ILMN_8641	NM_014838.1	-0.859713393	1.523638248	0.00003818
<i>ZFP42</i>	ILMN_137432	NM_174900.2	-0.859725141	1.19719526	0.00295165
<i>POLR1C</i>	ILMN_26638	NM_203290.1	-0.860212976	1.192204871	0.00013691
<i>GARNL1</i>	ILMN_2823	NM_194301.2	-0.861956735	1.353019331	0.00032433
<i>LANCL2</i>	ILMN_920	NM_018697.3	-0.862500848	1.173455357	0.00105055
<i>TPM2</i>	ILMN_22618	NM_213674.1	-0.862570029	0.757707188	0.00573649
<i>LGMM</i>	ILMN_20242	NM_005606.5	-0.863810044	0.698299435	0.00748695
<i>RAB11FIP3</i>	ILMN_7754	NM_014700.2	-0.864253745	1.039540889	0.00011007
<i>PWP2H</i>	ILMN_28098	NM_005049.2	-0.864825833	1.15514266	0.00041590
<i>JAM3</i>	ILMN_25295	NM_032801.3	-0.866648014	0.642975938	0.00684587
<i>SRRM2</i>	ILMN_21088	NM_016333.2	-0.866980414	0.656284143	0.00615188
<i>CHD1</i>	ILMN_27142	NM_001270.2	-0.867782711	0.915916348	0.00428004
<i>DRD3</i>	ILMN_137372	NM_033663.2	-0.868703905	0.749723692	0.00579986
<i>ASCC3L1</i>	ILMN_18834	NM_014014.2	-0.868807333	1.377643623	0.00001703
<i>MGMT</i>	ILMN_18705	NM_002412.2	-0.869575292	0.843019505	0.00366941
<i>NFKBIB</i>	ILMN_8370	NM_001001716.1	-0.871643725	1.022728781	0.00128423
<i>TCP11L2</i>	ILMN_21615	NM_152772.1	-0.872360842	0.87759018	0.00602482
<i>MARCH6</i>	ILMN_2629	NM_005885.2	-0.874989813	0.996225291	0.00361251
<i>NARG1L</i>	ILMN_9228	NM_018527.2	-0.875950484	1.25430275	0.00011058
<i>FYN</i>	ILMN_5919	NM_002037.3	-0.877027664	1.138050737	0.00037810

ZNF250	ILMN_25690	NM_021061.1	-0.877490052	0.971425594	0.00079302
SESN3	ILMN_11604	NM_144665.2	-0.879944442	1.134947842	0.00164548
RIMS3	ILMN_21581	NM_014747.2	-0.886401668	1.720794738	0.00002887
SNX25	ILMN_8556	NM_031953.2	-0.886699432	1.255349214	0.00001795
JARID1B	ILMN_14812	NM_006618.3	-0.886935531	1.409279841	0.00008858
PITPNC1	ILMN_12660	NM_181671.1	-0.888673165	1.417624087	0.00006531
B4GALT1	ILMN_20711	NM_001497.2	-0.888931145	0.715047063	0.00673477
POLS	ILMN_866	NM_006999.3	-0.890007455	1.414254344	0.00001205
SLC22A17	ILMN_10076	NM_016609.3	-0.891041878	0.812773625	0.00232667
CABLES2	ILMN_28000	NM_031215.1	-0.891745112	1.363327575	0.00049764
PTPRM	ILMN_19957	NM_002845.2	-0.892112842	1.097184571	0.00293499
ABHD14B	ILMN_24812	NM_032750.1	-0.892326662	1.44224977	0.00004053
EBP	ILMN_12837	NM_006579.1	-0.896139529	0.795734565	0.00203677
PLCG1	ILMN_3773	NM_002660.2	-0.896364198	0.806098446	0.00364560
MGC11257	ILMN_22349	NM_032350.3	-0.898197114	1.023241639	0.00025317
THUMPD2	ILMN_25512	NM_025264.2	-0.90015255	1.328191704	0.00000093
CD28	ILMN_5437	NM_006139.1	-0.901792636	0.970867535	0.00007722
NUP155	ILMN_1051	NM_004298.2	-0.904508354	1.137552613	0.00027759
MASTL	ILMN_7073	NM_032844.1	-0.906272759	1.009884304	0.00188459
VIL2	ILMN_2940	NM_003379.3	-0.90719828	0.809621514	0.00631678
CDR2	ILMN_10283	NM_001802.1	-0.907555245	0.920461232	0.00017280
AHCTF1	ILMN_28711	NM_015446.3	-0.907937518	1.662012186	0.00005143
ITK	ILMN_23317	NM_005546.3	-0.909896826	0.956548738	0.00023181
NDST2	ILMN_21220	NM_003635.2	-0.910459655	1.365135533	0.00022155
ZNF317	ILMN_22884	NM_020933.2	-0.910607633	1.561177388	0.00000864
PAG1	ILMN_20316	NM_018440.3	-0.914077327	1.177056311	0.00039575
SLC25A26	ILMN_21381	NM_173471.1	-0.914244004	1.329568646	0.00099660
CIC	ILMN_14588	NM_015125.2	-0.914603265	0.98731765	0.00130412
PELP1	ILMN_15422	NM_014389.1	-0.91485887	1.461682055	0.00004063
KIAA1285	ILMN_8883	NM_015694.1	-0.916008576	0.757897482	0.00508342
LOC130074	ILMN_26225	NM_00100993.1	-0.916194238	1.275412306	0.00013399

<i>HSPC023</i>	ILMN_24668	NM_014047.1	-0.917531536	1.085247037	0.00017209
<i>PPRC1</i>	ILMN_10445	NM_015062.3	-0.918683753	1.44933188	0.00000951
<i>TGIF2</i>	ILMN_25134	NM_021809.4	-0.919181739	1.070845819	0.00620873
<i>PPARD</i>	ILMN_139271	NM_006238.2	-0.922036255	0.949581608	0.00400146
<i>CHCHD6</i>	ILMN_19685	NM_032343.1	-0.922760945	1.685898574	0.00001234
<i>RPL41</i>	ILMN_5276	NM_021104.1	-0.927604921	0.939022696	0.00014426
<i>FAM100B</i>	ILMN_22874	NM_182565.2	-0.927975076	1.381430879	0.00001068
<i>C9orf111</i>	ILMN_22221	NM_152286.2	-0.928190875	1.062704382	0.00034302
<i>EDG1</i>	ILMN_138993	NM_001400.2	-0.929786795	0.705014559	0.00565600
<i>RCL1</i>	ILMN_18208	NM_005772.2	-0.930738874	1.023725888	0.00021865
<i>LMBR1L</i>	ILMN_27914	NM_018113.1	-0.931048642	1.503486864	0.00025559
<i>ZNF551</i>	ILMN_4569	NM_138347.2	-0.932518582	1.640473641	0.00001422
<i>TOE1</i>	ILMN_11173	NM_025077.2	-0.934242822	1.467344759	0.00010122
<i>PSME4</i>	ILMN_10890	NM_014614.1	-0.934832764	1.295787201	0.00025690
<i>ZBTB16</i>	ILMN_11903	NM_006006.4	-0.935257759	0.713736086	0.00683700
<i>DXYS155E</i>	ILMN_26209	NM_005088.2	-0.937911248	1.224959495	0.00023307
<i>LONRF1</i>	ILMN_138605	NM_152271.2	-0.937927017	0.870537082	0.00948435
<i>FLJ39779</i>	ILMN_12781	NM_207442.1	-0.939277125	0.927670032	0.00924437
<i>LSG1</i>	ILMN_6416	NM_018385.1	-0.94456847	0.979257112	0.00061345
<i>MYL5</i>	ILMN_21416	NM_002477.1	-0.945374141	1.293359335	0.00008484
<i>AHI1</i>	ILMN_23469	NM_017651.3	-0.945865402	1.319394148	0.00013258
<i>TIGA1</i>	ILMN_2113	NM_053000.1	-0.948258709	1.60679229	0.00000074
<i>ZNF707</i>	ILMN_20149	NM_173831.2	-0.951346105	1.340592694	0.00053180
<i>CDC37L1</i>	ILMN_559	NM_017913.2	-0.954095558	1.157427303	0.00047442
<i>ERN1</i>	ILMN_20244	NM_152461.2	-0.954332751	0.889607391	0.00034558
<i>DHRS3</i>	ILMN_12432	NM_004753.4	-0.954439327	1.353544551	0.00003756
<i>WRN</i>	ILMN_3783	NM_000553.2	-0.954452783	1.021016836	0.00116067
<i>URG4</i>	ILMN_13027	NM_017920.2	-0.95589912	1.422396175	0.00007026
<i>SMURF1</i>	ILMN_10493	NM_181349.1	-0.95594376	0.879615015	0.00245662
<i>HES6</i>	ILMN_4854	NM_018645.3	-0.95725005	0.633823723	0.00695471
<i>USF2</i>	ILMN_6055	NM_207291.1	-0.959901269	1.066664218	0.00035373

<i>HIVEP2</i>	ILMN_21520	NM_006734.2	-0.960694265	1.07910833	0.00266549
<i>CLASP1</i>	ILMN_14659	NM_015282.1	-0.961804572	1.602890635	0.00000137
<i>ZNF395</i>	ILMN_17231	NM_018660.2	-0.962316466	1.309008827	0.00003382
<i>PHF17</i>	ILMN_1535	NM_024900.2	-0.963425077	1.235639669	0.00006684
<i>NR1H2</i>	ILMN_137460	NM_007121.2	-0.965620392	1.016136008	0.00208002
<i>MGC26885</i>	ILMN_6572	NM_152339.2	-0.965624618	0.755387041	0.00213942
<i>DUSP14</i>	ILMN_9561	NM_007026.1	-0.96879883	1.261528702	0.00012174
<i>ZFP91</i>	ILMN_4526	NM_170768.1	-0.972236704	0.893726582	0.00243123
<i>MAX</i>	ILMN_19642	NM_145114.1	-0.972555189	0.706014867	0.00664976
<i>RLF</i>	ILMN_14015	NM_012421.1	-0.973603494	1.250131376	0.00126026
<i>PTGER4</i>	ILMN_13328	NM_000958.2	-0.974694545	0.840103103	0.00052976
<i>H2AFV</i>	ILMN_29030	NM_138635.2	-0.975093302	0.871705932	0.00441653
<i>JMJD1A</i>	ILMN_25544	NM_018433.3	-0.975719199	1.672444208	0.00000036
<i>CTLA4</i>	ILMN_138103	NM_005214.2	-0.975971478	1.185608797	0.00002484
<i>MGC3020</i>	ILMN_29369	NM_024048.2	-0.97855089	0.708809095	0.00778758
<i>PLXDC1</i>	ILMN_8865	NM_020405.3	-0.981718421	1.136980201	0.00048398
<i>EIF5A2</i>	ILMN_4591	NM_020390.5	-0.983175786	1.370404889	0.00006957
<i>POLR3E</i>	ILMN_12465	NM_018119.2	-0.983687344	1.022719891	0.00225480
<i>C14orf102</i>	ILMN_22111	NM_017970.2	-0.983885026	0.923757623	0.00012445
<i>SLC3A2</i>	ILMN_7086	NM_001012661.1	-0.984338149	1.129641218	0.00042718
<i>SOX8</i>	ILMN_30180	NM_014587.2	-0.984450805	0.837242057	0.00251059
<i>PDZD8</i>	ILMN_28006	NM_173791.2	-0.987766685	1.056312215	0.00391212
<i>GNLY</i>	ILMN_13145	NM_012483.1	-0.988780036	0.682561583	0.00361821
<i>KLHL15</i>	ILMN_4687	NM_030624.1	-0.991874786	0.87533629	0.00164519
<i>SREBF1</i>	ILMN_21143	NM_004176.3	-0.993698671	1.055990247	0.00040999
<i>STARD5</i>	ILMN_18773	NM_181900.2	-0.99655088	1.272232835	0.00057152
<i>NAT6</i>	ILMN_29898	NM_012191.2	-0.996896062	1.52838856	0.00000474
<i>RNMT</i>	ILMN_23400	NM_003799.1	-0.999891612	0.895566178	0.00800594
<i>RAPGEF1</i>	ILMN_2480	NM_005312.2	-1.000315423	1.638795745	0.00000591
<i>DNAH1</i>	ILMN_7494	NM_015512.3	-1.001506589	1.481165705	0.00001576
<i>KIAA1875</i>	ILMN_5826	NM_032529.1	-1.001629269	1.062064033	0.00062761

<i>DIP2A</i>	ILMN_26238	NM_206890.1	-1.003609357	1.096616183	0.00024842
<i>ILF3</i>	ILMN_3208	NM_012218.2	-1.004941901	1.13215569	0.00011859
<i>ODC1</i>	ILMN_21065	NM_002539.1	-1.011380594	1.419153265	0.00019692
<i>SCNN1D</i>	ILMN_8248	NM_002978.2	-1.011891425	1.535756779	0.00001507
<i>hCAP-H2</i>	ILMN_12341	NM_152299.1	-1.012825824	1.353763367	0.00005147
<i>DDX24</i>	ILMN_10146	NM_020414.3	-1.013524336	1.062762256	0.00240995
<i>REXO1</i>	ILMN_20923	NM_020695.2	-1.016680475	1.407635807	0.00002962
<i>NOP5/NOP58</i>	ILMN_4530	NM_015934.3	-1.018736595	1.147467699	0.00023180
<i>ABL1</i>	ILMN_22641	NM_007313.2	-1.018830246	1.330932128	0.00048762
<i>SLC11A2</i>	ILMN_10129	NM_000617.1	-1.019608873	1.246218549	0.00040787
<i>FLJ20309</i>	ILMN_19726	NM_017759.2	-1.020911214	0.942698875	0.00971642
<i>SERPINF1</i>	ILMN_19076	NM_002615.4	-1.021431387	1.036808834	0.00072847
<i>BCDIN3</i>	ILMN_8017	NM_019606.4	-1.022041487	1.291557277	0.00000739
<i>FBXO11</i>	ILMN_25889	NM_018693.2	-1.022222638	1.37168029	0.00002258
<i>COBLL1</i>	ILMN_12678	NM_014900.3	-1.022816897	0.832426581	0.00145449
<i>ARMC5</i>	ILMN_5121	NM_024742.1	-1.028127871	1.39228155	0.00008707
<i>MRPL54</i>	ILMN_1467	NM_172251.1	-1.029024922	0.906380196	0.00022165
<i>SNIP1</i>	ILMN_9410	NM_024700.2	-1.030911731	1.060761685	0.00006829
<i>Rgr</i>	ILMN_28738	NM_153615.1	-1.034056441	1.003839655	0.00013352
<i>STIM2</i>	ILMN_15073	NM_020860.1	-1.035049116	1.505310421	0.00000717
<i>TCEA3</i>	ILMN_27218	NM_003196.1	-1.036935308	1.127944699	0.00016303
<i>ZBTB32</i>	ILMN_2617	NM_014383.1	-1.037514656	1.188535314	0.00063147
<i>SPTY2D1</i>	ILMN_1945	NM_194285.2	-1.038141646	1.175704959	0.00631444
<i>ANKRD39</i>	ILMN_23002	NM_016466.4	-1.038769229	1.128394344	0.00022143
<i>ZCCHC14</i>	ILMN_138708	NM_015144.1	-1.040336024	1.291139581	0.00034769
<i>INADL</i>	ILMN_3904	NM_176878.1	-1.040993021	1.70357126	0.00000101
<i>ZBTB4</i>	ILMN_5011	NM_020899.2	-1.042333959	2.031811569	0.00000000
<i>C20orf7</i>	ILMN_137958	NM_024120.2	-1.045765733	1.57133193	0.00000698
<i>C1orf69</i>	ILMN_10199	NM_001010867.1	-1.048307962	1.041440424	0.00247324
<i>SLC9A8</i>	ILMN_27475	NM_015266.1	-1.049442878	0.779587623	0.00630261
<i>PHGDH</i>	ILMN_5800	NM_006623.2	-1.051702862	0.758381948	0.00287671

ZBTB5	ILMN_9696	NM_014872.1	-1.051925083	1.084009802	0.00020125
SLC25A23	ILMN_5925	NM_024103.2	-1.052611559	1.331925841	0.00000234
SDCCAG33	ILMN_138968	NM_005786.3	-1.053667943	1.43026202	0.00000293
CENTD1	ILMN_4742	NM_015230.2	-1.055518062	1.14550194	0.00194764
NR3C1	ILMN_21266	NM_001018077.1	-1.056201278	1.244978969	0.00045002
IDI1	ILMN_20349	NM_004508.2	-1.056483224	1.15471556	0.00161248
CRY2	ILMN_2356	NM_021117.1	-1.056792523	1.695128921	0.00001890
AP3M2	ILMN_568	NM_006803.2	-1.059707152	0.793326683	0.00120162
FLJ22531	ILMN_1491	NM_024650.2	-1.062235578	1.084659578	0.00022721
AXIN2	ILMN_26857	NM_004655.2	-1.063024843	0.656651343	0.00432164
CDH23	ILMN_16568	NM_022124.2	-1.069963463	1.525466254	0.00033029
POFUT2	ILMN_24199	NM_133635.3	-1.072201453	1.263952694	0.00028523
SLC29A2	ILMN_26468	NM_001532.2	-1.074548495	1.110901088	0.00003703
SUPV3L1	ILMN_23318	NM_003171.2	-1.075228735	1.666073917	0.00002209
TP53BP2	ILMN_9205	NM_001031685.1	-1.078450208	1.196004171	0.00093875
PIGA	ILMN_4309	NM_020472.1	-1.079728767	0.950416392	0.00209788
HOOK1	ILMN_4311	NM_015888.3	-1.083236126	0.928616441	0.00128459
TRIM39	ILMN_8004	NM_172016.1	-1.083346862	1.564079883	0.00003575
ZNF10	ILMN_24152	NM_015394.4	-1.084199045	1.15199778	0.00100454
TGFBR3	ILMN_22620	NM_003243.2	-1.084226172	1.128488295	0.00005957
EIF2AK3	ILMN_26832	NM_004836.3	-1.085003976	1.637926145	0.00017908
ITM2C	ILMN_26681	NM_030926.4	-1.090792126	0.871247944	0.00032229
BRWD1	ILMN_28841	NM_001007246.1	-1.091496504	1.464860651	0.00017778
UBE2L3	ILMN_9533	NM_198157.1	-1.095698317	0.905055567	0.00036489
SATB1	ILMN_6836	NM_002971.2	-1.097599208	1.281847843	0.00009024
WWP2	ILMN_7085	NM_199423.1	-1.098543058	1.022921304	0.00013328
ARL4C	ILMN_15416	NM_005737.3	-1.100859167	1.576249216	0.00000041
IER2	ILMN_12423	NM_004907.2	-1.102360836	0.850031142	0.00439957
MC1R	ILMN_25536	NM_002386.2	-1.107207251	0.927711281	0.00209384
HIPK2	ILMN_29690	NM_022740.2	-1.109902186	0.848263301	0.00019985
KIAA0863	ILMN_6906	NM_014913.2	-1.110899409	1.338766228	0.00059178

<i>TRERF1</i>	ILMN_11192	NM_033501.1	-1.111168158	1.381573081	0.00006062
<i>SUSD4</i>	ILMN_139385	NM_017982.1	-1.118672404	1.052960579	0.00022936
<i>PDE3B</i>	ILMN_5085	NM_000922.2	-1.119749363	1.260525562	0.00003540
<i>SFMBT1</i>	ILMN_20774	NM_001005158.1	-1.122680128	1.054502396	0.00301102
<i>SUPT5H</i>	ILMN_15760	NM_003169.2	-1.123627354	1.099088419	0.00044748
<i>RHOF</i>	ILMN_1762	NM_019034.2	-1.126315274	1.375102017	0.00031725
<i>LPHN1</i>	ILMN_12017	NM_014921.3	-1.138476162	1.662119528	0.00000917
<i>PRR8</i>	ILMN_25238	NM_053043.1	-1.142802208	1.880951403	0.00000131
<i>ADORA2A</i>	ILMN_8227	NM_000675.3	-1.145913244	0.930252378	0.00199321
<i>FBXL11</i>	ILMN_12629	NM_012308.1	-1.148612325	1.152483839	0.00010613
<i>KBTBD8</i>	ILMN_23329	NM_032505.1	-1.150383237	0.980994072	0.00298577
<i>C16orf60</i>	ILMN_10665	NM_018455.3	-1.150703459	0.875738978	0.00533009
<i>ARID5A</i>	ILMN_12305	NM_212481.1	-1.153235059	1.005507042	0.00791543
<i>BAG3</i>	ILMN_9420	NM_004281.3	-1.155985342	1.051113868	0.00115372
<i>PLEKHB1</i>	ILMN_2859	NM_021200.1	-1.164061785	1.740371718	0.00000559
<i>TNFRSF13B</i>	ILMN_9141	NM_012452.2	-1.166101521	0.812444288	0.00410135
<i>SLC25A34</i>	ILMN_6699	NM_207348.1	-1.176664306	1.580127428	0.00002748
<i>ATHL1</i>	ILMN_138992	NM_025092.1	-1.180243174	0.927738706	0.00201768
<i>PCK2</i>	ILMN_26008	NM_002595.2	-1.183475914	1.128966884	0.00538235
<i>RNF103</i>	ILMN_17861	NM_005667.2	-1.185091047	1.060017872	0.00079149
<i>RSC1A1</i>	ILMN_3431	NM_006511.1	-1.187594127	1.371416969	0.00063915
<i>ATP2A3</i>	ILMN_6507	NM_174958.1	-1.189495716	1.110979165	0.00436586
<i>PRC1</i>	ILMN_20465	NM_003981.2	-1.190523415	1.021719819	0.00448523
<i>DUSP10</i>	ILMN_14599	NM_144728.1	-1.195047913	1.017629683	0.00887235
<i>ZFAND2A</i>	ILMN_21900	NM_182491.1	-1.205318845	1.015840107	0.00003574
<i>LMTK2</i>	ILMN_18423	NM_014916.2	-1.206957664	1.253180161	0.00047386
<i>P2RY11</i>	ILMN_12237	NM_002566.4	-1.210259935	1.06355304	0.00041398
<i>RNF10</i>	ILMN_14490	NM_014868.3	-1.210970564	1.237971365	0.00020066
<i>AQP3</i>	ILMN_22744	NM_004925.3	-1.211854338	1.043353942	0.00058054
<i>LRIG1</i>	ILMN_3319	NM_015541.2	-1.215707138	0.887627098	0.00096494
<i>P2RY8</i>	ILMN_28691	NM_178129.3	-1.219269472	0.98848837	0.00126480

<i>MLL5</i>	ILMN_9061	NM_018682.2	-1.223435851	1.970466771	0.00001201
<i>NGFRAP1</i>	ILMN_7162	NM_014380.1	-1.232227015	1.206946971	0.00003357
<i>TKTL1</i>	ILMN_23315	NM_012253.2	-1.234316429	0.966661273	0.00017305
<i>C6orf105</i>	ILMN_10287	NM_032744.1	-1.239896797	0.885246225	0.00101737
<i>RAB33A</i>	ILMN_2535	NM_004794.2	-1.241055838	1.260240271	0.00047052
<i>SPRY2</i>	ILMN_19344	NM_005842.2	-1.241885867	1.021584875	0.00382667
<i>CXCR3</i>	ILMN_2029	NM_001504.1	-1.244115035	0.979138466	0.00777972
<i>PIM3</i>	ILMN_19535	NM_001001852.2	-1.246301965	0.788206936	0.00461466
<i>PLEKHF1</i>	ILMN_25787	NM_024310.2	-1.250552556	1.09224994	0.00017933
<i>ZNF335</i>	ILMN_9501	NM_022095.3	-1.251403176	1.416122752	0.00000374
<i>TIPARP</i>	ILMN_4419	NM_015508.2	-1.252940769	0.785601153	0.00628327
<i>PAPD5</i>	ILMN_11715	NM_022447.1	-1.25411808	1.168275365	0.00090546
<i>GJA12</i>	ILMN_6786	NM_020435.2	-1.257644209	1.320134633	0.00016783
<i>CRSP7</i>	ILMN_14940	NM_004831.3	-1.261907049	1.49395962	0.00002501
<i>C1orf21</i>	ILMN_26434	NM_030806.3	-1.265697427	1.169849	0.00014912
<i>MIDN</i>	ILMN_6472	NM_177401.4	-1.266404108	0.946703753	0.00048229
<i>PASK</i>	ILMN_19873	NM_015148.2	-1.276320058	0.912776289	0.00129334
<i>CAMK4</i>	ILMN_5327	NM_001744.3	-1.277241788	1.681851719	0.00001813
<i>LOC90826</i>	ILMN_17873	NM_138364.2	-1.27785886	1.15131075	0.00042332
<i>ATXN7L2</i>	ILMN_6796	NM_153340.2	-1.280663545	1.891153588	0.00000392
<i>PTP4A1</i>	ILMN_27315	NM_003463.3	-1.280755813	0.981037923	0.00088222
<i>OVGP1</i>	ILMN_7829	NM_002557.3	-1.280833537	2.145648028	0.00000006
<i>SMPD1</i>	ILMN_8257	NM_001007593.1	-1.28381406	1.165957203	0.00027206
<i>CHD7</i>	ILMN_29669	NM_017780.2	-1.285175635	1.611575053	0.00000132
<i>ZHX2</i>	ILMN_21703	NM_014943.3	-1.289399266	1.042646216	0.00479687
<i>TSEN54</i>	ILMN_8569	NM_207346.1	-1.291774	1.143237204	0.00080973
<i>KTN1</i>	ILMN_29637	NM_182926.1	-1.292563877	1.679784537	0.00002236
<i>RWDD1</i>	ILMN_29174	NM_016104.2	-1.295908497	1.158676772	0.00112686
<i>NXT1</i>	ILMN_26865	NM_013248.2	-1.303466657	1.103790462	0.00006758
<i>IRF4</i>	ILMN_12414	NM_002460.1	-1.304331316	2.190738858	0.00000044
<i>UAP1</i>	ILMN_7007	NM_003115.3	-1.304761251	1.006944977	0.00035277

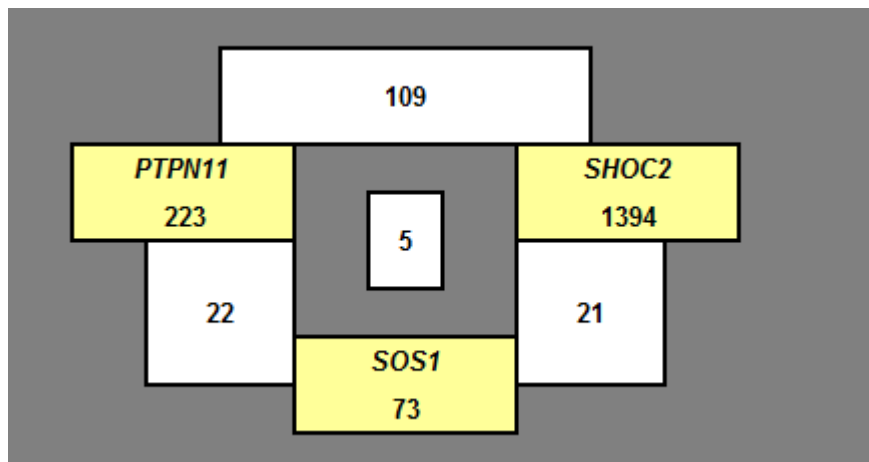
ANKRD37	ILMN_2423	NM_181726.1	-1.308150345	0.937315673	0.00117745
DDX6	ILMN_25649	NM_004397.3	-1.309650532	2.155651735	0.00000030
LOC285513	ILMN_8803	NM_198281.1	-1.313429509	1.546964677	0.00004860
TAF5L	ILMN_6399	NM_001025247.1	-1.32305886	1.278931108	0.00002693
CMTM8	ILMN_19577	NM_178868.3	-1.325376459	0.983647445	0.00014993
SLC16A10	ILMN_10556	NM_018593.3	-1.327387377	1.108265763	0.00009461
FYTTD1	ILMN_5513	NM_001011537.1	-1.329127617	1.018346452	0.00030597
PBX4	ILMN_11004	NM_025245.1	-1.333943281	0.986938102	0.00304411
PTGDS	ILMN_19248	NM_000954.5	-1.334379734	0.752694849	0.00189346
TNFSF9	ILMN_18030	NM_003811.2	-1.335068602	1.026974042	0.00016772
CNN3	ILMN_15358	NM_001839.2	-1.338292839	1.112524436	0.00048147
ZNF295	ILMN_12236	NM_020727.3	-1.353598502	1.304194049	0.00116404
CCR7	ILMN_21335	NM_001838.2	-1.359887042	0.918007418	0.00010383
BCL9L	ILMN_27555	NM_182557.1	-1.360587969	1.095800517	0.00209233
IRF2BP2	ILMN_5645	NM_182972.1	-1.370069134	0.969007786	0.00052119
RASA3	ILMN_19501	NM_007368.2	-1.3738673	1.455515605	0.00002815
ARRDC2	ILMN_7560	NM_015683.1	-1.379096994	1.114271453	0.00156368
SCML1	ILMN_138894	NM_006746.3	-1.381562596	1.167403576	0.00101569
KIAA1754	ILMN_13119	NM_033397.2	-1.38432219	1.12747861	0.00001941
MAL	ILMN_3411	NM_002371.2	-1.393195146	2.207099447	0.00000002
MCM6	ILMN_15791	NM_005915.4	-1.39751721	1.334945131	0.00049304
H2AFX	ILMN_23585	NM_002105.2	-1.40589861	1.466002611	0.00007136
ZFPM1	ILMN_15190	NM_153813.1	-1.407664057	0.875418487	0.00457871
EIF2C2	ILMN_25413	NM_012154.2	-1.417512796	1.665176969	0.00023257
BHLHB2	ILMN_24095	NM_003670.1	-1.418174041	0.889047464	0.00057911
BRD1	ILMN_19562	NM_014577.1	-1.428483553	1.226958019	0.00098546
CTH	ILMN_4045	NM_153742.3	-1.429744393	0.844427128	0.00829306
FLT3LG	ILMN_4754	NM_001459.2	-1.440491375	1.580411425	0.00003438
SLC5A6	ILMN_880	NM_021095.1	-1.45459924	1.033310371	0.00195215
DYNLL2	ILMN_28971	NM_080677.1	-1.455649083	1.2977239	0.00000465
GMEB2	ILMN_7174	NM_012384.2	-1.456946954	1.247345988	0.00010064

GADD45B	ILMN_138334	NM_015675.1	-1.45927016	0.890864982	0.00134377
PRR7	ILMN_17178	NM_030567.2	-1.459895146	1.238910411	0.00004716
NR1D2	ILMN_17981	NM_005126.2	-1.463555459	1.152704022	0.00084447
CD69	ILMN_13491	NM_001781.1	-1.467514074	0.767635098	0.00431058
FASN	ILMN_16128	NM_004104.4	-1.474522935	0.834416803	0.00868356
LOC158830	ILMN_10937	NM_001025265.1	-1.492231983	1.659484712	0.00001229
K6IRS2	ILMN_14872	NM_080747.1	-1.494649542	0.857170698	0.00873840
BTG3	ILMN_27215	NM_006806.3	-1.49479515	1.027933063	0.00054222
BZRAP1	ILMN_11647	NM_004758.1	-1.502581736	1.509465143	0.00001428
OCIAD2	ILMN_18246	NM_152398.2	-1.50757606	1.074604795	0.00011990
MN1	ILMN_3720	NM_002430.2	-1.509096037	1.199838716	0.00627720
CASZ1	ILMN_27214	NM_017766.2	-1.513362235	1.067663278	0.00068936
MGAT4A	ILMN_139237	NM_012214.1	-1.516364202	1.43878649	0.00001522
DHCR7	ILMN_2138	NM_001360.1	-1.521006311	1.09154978	0.00456684
FLJ20152	ILMN_139301	NM_019000.2	-1.529809004	1.570604078	0.00000028
VPS37B	ILMN_18457	NM_024667.1	-1.535202738	1.386660943	0.00053514
MGC17330	ILMN_15026	NM_052880.3	-1.549289306	2.615593431	0.00000000
ICOS	ILMN_9996	NM_012092.2	-1.55851009	0.844005633	0.00079917
HIVEP1	ILMN_6517	NM_002114.1	-1.565011369	1.269386062	0.00098464
DUSP5	ILMN_12928	NM_004419.3	-1.568760545	0.926620188	0.00027977
CCRN4L	ILMN_2730	NM_012118.2	-1.57585378	0.676954674	0.00941115
DDIT3	ILMN_16748	NM_004083.4	-1.580473683	0.904339432	0.00035640
SFXN1	ILMN_16398	NM_022754.4	-1.584214832	1.584567288	0.00000684
IL23A	ILMN_20797	NM_016584.2	-1.592231591	1.093073096	0.00085884
CD248	ILMN_25766	NM_020404.2	-1.593596823	1.03796568	0.00063579
TMEM119	ILMN_30233	NM_181724.1	-1.610801334	1.060679622	0.00207322
ICOSLG	ILMN_28135	NM_015259.4	-1.614784424	1.230937184	0.00073267
IL21R	ILMN_12364	NM_181078.1	-1.616207162	1.128564536	0.00074184
DDX39	ILMN_23076	NM_138998.1	-1.658427147	1.367587877	0.00016648
FHIT	ILMN_15082	NM_002012.1	-1.673448104	1.828433492	0.00000036
MTP18	ILMN_13393	NM_016498.3	-1.68269229	1.49713298	0.00000170

BRD4	ILMN_22169	NM_058243.1	-1.683630214	1.449106676	0.00043360
SPRY1	ILMN_23549	NM_199327.1	-1.685777091	1.00030247	0.00128713
PPP1R16B	ILMN_26824	NM_015568.2	-1.718794599	1.300533176	0.00009419
NAP1L5	ILMN_5355	NM_153757.1	-1.728193379	1.563329697	0.00001555
TNF	ILMN_24087	NM_000594.2	-1.730636109	0.817723797	0.00871514
RGC32	ILMN_14549	NM_014059.1	-1.735045244	1.070386047	0.00010195
ZC3H12A	ILMN_18682	NM_025079.1	-1.735762717	0.908241129	0.00147260
MXRA7	ILMN_628	NM_001008528.1	-1.748431483	0.973613834	0.00291921
SC5DL	ILMN_24287	NM_006918.3	-1.750481592	1.151071938	0.00272999
UBE2D2	ILMN_27792	NM_181838.1	-1.757736084	1.428181422	0.00001760
FGF9	ILMN_1771	NM_002010.1	-1.760403535	1.428823821	0.00010647
YES1	ILMN_1505	NM_005433.3	-1.764392963	1.318925488	0.00039148
ZNF165	ILMN_8007	NM_003447.2	-1.773928105	1.218351034	0.00025979
CCNT1	ILMN_1033	NM_001240.2	-1.786747551	1.130941224	0.00097410
PLK3	ILMN_8968	NM_004073.2	-1.790107415	1.123509115	0.00033397
JOSD1	ILMN_21647	NM_014876.3	-1.797931989	1.466413364	0.00000333
SOCS1	ILMN_3038	NM_003745.1	-1.807780801	0.953587459	0.00028092
AVP11	ILMN_9920	NM_021732.1	-1.844873323	0.793664838	0.00101944
TSPYL2	ILMN_26999	NM_022117.1	-1.845460576	1.080002715	0.00158472
GPR132	ILMN_19860	NM_013345.2	-1.858180805	1.009628034	0.00276606
FGFRL1	ILMN_28273	NM_001004358.1	-1.86348235	1.136549742	0.00251797
AXUD1	ILMN_6524	NM_033027.2	-1.865941039	1.074402426	0.00002134
DBH	ILMN_25962	NM_000787.2	-1.875893893	1.358238144	0.00199035
GADD45G	ILMN_4884	NM_006705.2	-1.883200245	1.092648505	0.00159004
ELL2	ILMN_15317	NM_012081.3	-1.895230568	1.054802224	0.00923017
JUN	ILMN_7746	NM_002228.3	-1.93716324	1.35200957	0.00128284
CD5	ILMN_29547	NM_014207.2	-1.969005232	1.472172181	0.00001058
CCL4L1	ILMN_4819	NM_001001435.2	-1.972847504	0.777562423	0.00687597
DLL1	ILMN_1802	NM_005618.2	-1.981683353	1.243856495	0.00029039
TP53INP2	ILMN_28839	NM_021202.1	-1.987037329	0.803135548	0.00674516
GADD45A	ILMN_17355	NM_001924.2	-2.011561809	1.213085063	0.00005108

<i>USP36</i>	ILMN_23872	NM_025090.2	-2.045788282	1.389118043	0.00005194
<i>DUSP2</i>	ILMN_21154	NM_004418.2	-2.049331375	0.994473822	0.00002824
<i>GRASP</i>	ILMN_11141	NM_181711.1	-2.181045645	0.887808594	0.00177700
<i>JMY</i>	ILMN_18491	NM_152405.1	-2.214065556	1.559103931	0.00008945
<i>SMAD7</i>	ILMN_10011	NM_005904.2	-2.21499091	1.138519775	0.00041631
<i>DUSP8</i>	ILMN_21272	NM_004420.1	-2.243733266	1.648409441	0.00000576
<i>K6IRS3</i>	ILMN_13180	NM_175068.2	-2.248575123	1.805083434	0.00001610
<i>FOSB</i>	ILMN_13603	NM_006732.1	-2.312871227	0.610878937	0.00583158
<i>GALR2</i>	ILMN_4188	NM_003857.2	-2.318004128	1.295873257	0.00007526
<i>NR4A2</i>	ILMN_28405	NM_006186.2	-2.375127134	0.693171084	0.00105245
<i>CXCL2</i>	ILMN_29078	NM_002089.1	-2.384946205	0.672530598	0.00878350
<i>SEC14L2</i>	ILMN_9607	NM_012429.1	-2.389587687	1.369976121	0.00048088
<i>CD83</i>	ILMN_16705	NM_004233.2	-2.400607006	1.029167736	0.00012951
<i>PHACTR1</i>	ILMN_17425	NM_030948.1	-2.411791103	1.475392994	0.00001304
<i>LYPD3</i>	ILMN_23267	NM_014400.1	-2.421971695	1.147458967	0.00050112
<i>GJB2</i>	ILMN_26343	NM_004004.3	-2.549537207	0.975329581	0.00657606
<i>ZNF331</i>	ILMN_28697	NM_018555.4	-2.578337112	1.033044629	0.00014144
<i>RGS16</i>	ILMN_16445	NM_002928.2	-2.807399525	0.923543594	0.00132862
<i>PHLDA1</i>	ILMN_138322	NM_007350.2	-2.954967361	0.995309086	0.00237317
<i>SLC7A5</i>	ILMN_25446	NM_003486.5	-3.70325022	1.269118167	0.00008773

Supp. Table S2E. probe-level intersections between the *PTPN11*, *SOS1* and *SHOC2* signatures



Supp. Table S3. False Discovery rate analysis				
	NS Signature	<i>PTPN11</i> Signature	<i>SOS1</i> Signature	<i>SHOC2</i> Signature
True positives	125	225	73	1407
Median false positives in 2000 permutations	0	1	4	5
FDR (Median)	0.0%	0.4%	5.5%	0.4%
Median false positives in 2000 permutations	0.227	3.203	12.082	15.514
FDR (Average)	0.2%	1.4%	16.6%	1.1%

Supp. Table S4A.
Functional annotation analysis (DAVID EASE) of the *PTPN11* Signature

***PTPN11* SIGNATURE (up-regulated & downregulated genes)**

Category	Term	Pvalue	n° of Genes	Fold Enrichment	Benjamini-corrected p-value
SP_PIR_KEYWORDS	receptor	1.06E-05	24	2.805	3.97E-04
SP_PIR_KEYWORDS	SH2 domain	9.38E-06	11	5.971	4.01E-04
SP_PIR_KEYWORDS	tyrosine-specific protein kinase	2.88E-04	5	13.570	7.80E-03
SP_PIR_KEYWORDS	disulfide bond	1.22E-18	57	3.683	3.65E-16
UP_SEQ_FEATURE	disulfide bond	2.96E-18	55	3.740	2.00E-15
SP_PIR_KEYWORDS	signal	2.06E-14	58	2.958	3.09E-12
UP_SEQ_FEATURE	signal peptide	2.11E-14	58	2.956	7.12E-12
GOTERM_CC_FAT	GO:0005886~plasma membrane	5.24E-13	71	2.258	1.24E-10
SP_PIR_KEYWORDS	Secreted	3.60E-11	30	4.236	3.59E-09
UP_SEQ_FEATURE	topological domain:Extracellular	2.97E-11	45	2.993	6.69E-09
GOTERM_CC_FAT	GO:0005576~extracellular region	1.14E-10	36	3.335	1.35E-08
SP_PIR_KEYWORDS	glycoprotein	3.72E-10	61	2.275	2.78E-08
GOTERM_CC_FAT	GO:0044421~extracellular region part	1.37E-08	22	4.316	1.08E-06
GOTERM_CC_FAT	GO:0005615~extracellular space	2.03E-08	20	4.669	1.20E-06
SP_PIR_KEYWORDS	Immunoglobulin domain	5.04E-08	17	5.393	3.01E-06
GOTERM_CC_FAT	GO:0031226~intrinsic to plasma membrane	6.69E-08	29	3.106	3.17E-06
INTERPRO	IPR013783:Immunoglobulin-like fold	9.09E-09	19	5.258	4.46E-06
UP_SEQ_FEATURE	glycosylation site:N-linked (GlcNAc...)	3.81E-08	54	2.158	6.44E-06
SP_PIR_KEYWORDS	cell membrane	4.06E-07	35	2.567	2.03E-05
GOTERM_CC_FAT	GO:0005887~integral to plasma membrane	5.93E-07	27	2.959	2.34E-05

UP_SEQ_FEATURE	topological domain:Cytoplasmic	2.57E-07	51	2.099	3.47E-05
GOTERM_CC_FAT	GO:0044459~plasma membrane part	6.18E-06	41	2.045	2.09E-04
INTERPRO	IPR013106:Immunoglobulin V-set	3.28E-06	10	7.611	8.05E-04
INTERPRO	IPR000980:SH2 motif	7.60E-06	11	6.089	1.24E-03
INTERPRO	IPR003599:Immunoglobulin subtype	1.19E-05	12	5.219	1.46E-03
GOTERM_CC_FAT	GO:0009986~cell surface	5.32E-05	14	3.801	1.58E-03
INTERPRO	IPR007110:Immunoglobulin-like	2.75E-05	13	4.397	2.70E-03
GOTERM_CC_FAT	GO:0009897~external side of plasma membrane	1.03E-04	10	5.075	2.72E-03
SP_PIR_KEYWORDS	transmembrane protein	9.42E-05	17	3.099	3.13E-03
GOTERM_CC_FAT	GO:0016021~integral to membrane	2.35E-04	72	1.428	5.57E-03
GOTERM_BP_FAT	GO:0002684~positive regulation of immune system process	3.89E-06	15	4.456	6.37E-03
SP_PIR_KEYWORDS	transmembrane	2.86E-04	66	1.505	8.51E-03
SP_PIR_KEYWORDS	membrane	3.99E-04	86	1.381	9.88E-03
<i>PTPN11</i> SIGNATURE (up-regulated genes)					
Category	Term	Pvalue	n° Gene	Fold Enrich	Benjamini p-value
UP_SEQ_FEATURE	disulfide bond	1.72E-10	27	4.271	6.50E-08
SP_PIR_KEYWORDS	disulfide bond	5.34E-10	27	4.059	1.08E-07
GOTERM_CC_FAT	GO:0005886~plasma membrane	6.49E-09	36	2.589	1.11E-06
SP_PIR_KEYWORDS	signal	3.32E-07	26	3.084	3.37E-05
UP_SEQ_FEATURE	signal peptide	3.35E-07	26	3.083	6.32E-05
SP_PIR_KEYWORDS	glycoprotein	3.29E-06	29	2.516	2.23E-04
SP_PIR_KEYWORDS	Secreted	7.51E-06	14	4.598	3.81E-04
GOTERM_CC_FAT	GO:0005615~extracellular space	1.20E-05	11	5.806	6.83E-04
GOTERM_CC_FAT	GO:0005576~extracellular region	9.63E-06	17	3.561	8.23E-04
UP_SEQ_FEATURE	glycosylation site:N-linked (GlcNAc...)	9.17E-06	27	2.510	1.15E-03

GOTERM_CC_FAT	GO:0044421~extracellular region part	5.57E-05	11	4.879	2.38E-03
GOTERM_CC_FAT	GO:0044459~plasma membrane part	2.14E-04	21	2.368	7.30E-03
PTPN11 SIGNATURE (down-regulated genes)					
Category	Term	Pvalue	n° of Genes	Fold Enrichment	Benjamini-corrected p-value
SP_PIR_KEYWORDS	disulfide bond	4.79E-09	30	3.400	1.01E-06
UP_SEQ_FEATURE	topological domain:Extracellular	1.07E-08	29	3.383	4.05E-06
UP_SEQ_FEATURE	disulfide bond	2.83E-08	28	3.340	5.33E-06
SP_PIR_KEYWORDS	signal	7.35E-08	32	2.862	7.71E-06
UP_SEQ_FEATURE	signal peptide	7.44E-08	32	2.860	9.35E-06
SP_PIR_KEYWORDS	Secreted	8.81E-06	16	3.962	6.17E-04
UP_SEQ_FEATURE	topological domain:Cytoplasmic	8.12E-06	32	2.311	7.65E-04
GOTERM_CC_FAT	GO:0009986~cell surface	2.60E-05	11	5.354	1.02E-03
SP_PIR_KEYWORDS	cell membrane	2.03E-05	22	2.830	1.07E-03
GOTERM_CC_FAT	GO:0005576~extracellular region	1.53E-05	19	3.156	1.20E-03
GOTERM_CC_FAT	GO:0005886~plasma membrane	2.32E-05	35	1.996	1.22E-03
GOTERM_CC_FAT	GO:0009897~external side of plasma membrane	8.74E-06	9	8.190	1.37E-03
SP_PIR_KEYWORDS	SH2 domain	6.59E-05	8	7.616	2.30E-03
SP_PIR_KEYWORDS	glycoprotein	5.89E-05	32	2.093	2.47E-03
GOTERM_CC_FAT	GO:0031226~intrinsic to plasma membrane	1.35E-04	16	3.072	4.24E-03
GOTERM_BP_FAT	GO:0042110~T cell activation	7.26E-06	10	7.115	4.31E-03
GOTERM_BP_FAT	GO:0046649~lymphocyte activation	4.17E-06	12	5.831	4.95E-03
SP_PIR_KEYWORDS	transmembrane protein	2.43E-04	12	3.837	7.27E-03
GOTERM_BP_FAT	GO:0045321~leukocyte activation	1.97E-05	12	4.980	7.77E-03
GOTERM_CC_FAT	GO:0044421~extracellular region part	4.12E-04	11	3.870	9.21E-03
SP_PIR_KEYWORDS	Immunoglobulin domain	3.64E-04	9	5.007	9.52E-03

GOTERM_CC_FAT	GO:0005887~integral to plasma membrane	3.76E-04	15	2.948	9.79E-03
---------------	--	----------	----	-------	----------

Supp. Table S4B.
Functional annotation analysis (DAVID EASE) of the *SHOC2* signature

***SHOC2* Signature (up-regulated & downregulated genes)**

Category	Term	Pvalue	n° of Genes	Fold Enrichment	Benjamini-corrected p-value
UP_SEQ_FEATURE	topological domain:Cytoplasmic	8.09E-07	203	1.333	2.48E-03
UP_SEQ_FEATURE	topological domain:Extracellular	2.15E-06	134	1.422	3.30E-03
GOTERM_CC_FAT	GO:0005886~plasma membrane	1.03E-05	237	1.248	5.64E-03
GOTERM_CC_FAT	GO:0044459~plasma membrane part	2.62E-05	159	1.314	7.14E-03
UP_SEQ_FEATURE	glycosylation site:N-linked (GlcNAc...)	8.53E-06	203	1.294	8.69E-03

***SHOC2* Signature (up-regulated genes)**

Category	Term	Pvalue	n° of Genes	Fold Enrichment	Benjamini-corrected p-value
SP_PIR_KEYWORDS	transmembrane	2.16E-10	183	1.510	9.23E-08
UP_SEQ_FEATURE	transmembrane region	1.05E-10	183	1.522	1.52E-07
SP_PIR_KEYWORDS	membrane	2.30E-08	232	1.348	4.91E-06
UP_SEQ_FEATURE	topological domain:Cytoplasmic	8.36E-08	109	1.623	6.06E-05
SP_PIR_KEYWORDS	glycoprotein	1.36E-06	113	1.524	1.94E-04
UP_SEQ_FEATURE	glycosylation site:N-linked (GlcNAc...)	4.15E-07	109	1.575	2.01E-04
GOTERM_CC_FAT	GO:0031224~intrinsic to membrane	6.23E-06	197	1.280	1.23E-03
GOTERM_CC_FAT	GO:0016021~integral to membrane	4.19E-06	193	1.293	1.65E-03
SP_PIR_KEYWORDS	immune response	2.13E-05	22	2.738	2.27E-03

SP_PIR_KEYWORDS	transport	2.81E-05	93	1.502	2.40E-03
UP_SEQ_FEATURE	topological domain:Extracellular	8.20E-06	70	1.684	2.97E-03
GOTERM_CC_FAT	GO:0005773~vacuole	6.96E-05	28	2.207	9.13E-03
UP_SEQ_FEATURE	binding site:Substrate	3.21E-05	29	2.286	9.27E-03
SHOC2 Signature (down-regulated genes)					
Category	Term	Pvalue	n° of Genes	Fold Enrichment	Benjamini-corrected p-value
SP_PIR_KEYWORDS	Transcription	2.71E-11	168	1.592	1.18E-08
SP_PIR_KEYWORDS	transcription regulation	5.48E-11	161	1.600	1.19E-08
SP_PIR_KEYWORDS	nucleus	4.28E-10	318	1.313	6.20E-08
SP_PIR_KEYWORDS	dna-binding	1.94E-09	129	1.635	2.11E-07
GOTERM_BP_FAT	GO:0006350~transcription	1.25E-10	171	1.533	3.40E-07
GOTERM_BP_FAT	GO:0045449~regulation of transcription	1.87E-09	188	1.448	2.54E-06
SP_PIR_KEYWORDS	zinc-finger	3.15E-07	131	1.504	2.74E-05
INTERPRO	IPR007087:Zinc finger, C2H2-type	3.54E-08	65	1.969	3.92E-05
INTERPRO	IPR015880:Zinc finger, C2H2-like	2.02E-07	65	1.887	1.12E-04
UP_SEQ_FEATURE	zinc finger region:C2H2-type 2	7.01E-07	52	1.997	1.38E-03
UP_SEQ_FEATURE	zinc finger region:C2H2-type 4	3.43E-06	47	1.980	3.38E-03
UP_SEQ_FEATURE	zinc finger region:C2H2-type 3	5.81E-06	49	1.914	3.81E-03
UP_SEQ_FEATURE	zinc finger region:C2H2-type 5	2.78E-05	42	1.921	1.36E-02
UP_SEQ_FEATURE	zinc finger region:C2H2-type 1	3.68E-05	45	1.851	1.44E-02
SP_PIR_KEYWORDS	zinc	2.02E-04	140	1.316	1.46E-02
UP_SEQ_FEATURE	zinc finger region:C2H2-type 7	4.55E-05	35	2.028	1.48E-02
UP_SEQ_FEATURE	compositionally biased region:Pro-rich	6.13E-05	61	1.644	1.71E-02
GOTERM_BP_FAT	GO:0006355~regulation of transcription, DNA-dependent	2.33E-05	113	1.426	2.08E-02
GOTERM_BP_FAT	GO:0051252~regulation of RNA metabolic process	3.73E-05	114	1.409	2.50E-02

Supp. Table S5.					
Modulation of transcription factors and their putative target genes					
Transcription Factor (TF)	TF Modulation	TF binding site enrichment	Opossum Z-Score	Opossum p-value	Hypergeometric analysis p-value
<i>GFI1</i>	Downregulated in <i>PTPN11</i> and <i>SOS1</i> mutation group	Enriched in <i>PTPN11</i>-downmodulated genes	5.033	0.0003142	p<0.0001
<i>GABPA</i>	Upregulated in <i>SOS1</i> and <i>SHOC2</i> mutation group	Enriched in <i>SOS1</i>-downmodulated genes	8.295	0.02257	p<0.05
<i>CREB1</i>	Upregulated in <i>SHOC2</i> mutation group	Enriched in <i>SHOC2</i>-downmodulated genes	14.32	0.00144	p<0.00001
<i>SPI1</i>	Upregulated in <i>SHOC2</i> mutation group	Enriched in <i>SHOC2</i>-downmodulated genes	7.007	0.007963	p<0.00001