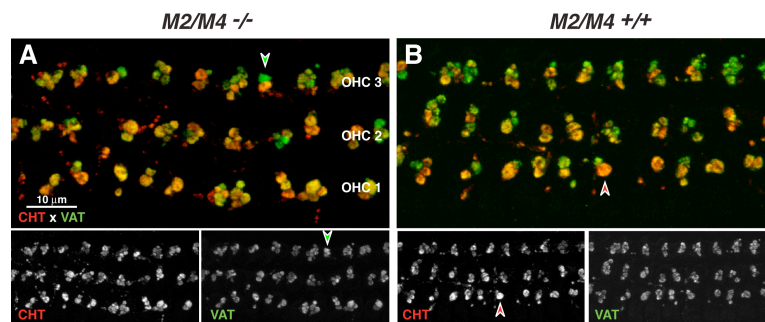


Supplementary Figure 1: RT-PCR shows an M₃ band when the microdissected tissue from the adult cochlea includes the spiral ganglion, the modiolus, the cochlear nerve trunk and other contents of the internal auditory meatus. Other conventions for data display are as described for Figure 1.



Supplementary Figure 2: Expression of the high-affinity choline transporter (CHT) is unchanged in *M2/M4* null mice. CHT and vesicular acetylcholine transporter (VAT) co-localize in the clusters of efferent terminals under the three rows of outer hair cells (OHCs) in a knockout (A) and a wildtype (B) cochlea. Although relative expression of the two markers varies, with some terminals dominated by VAT signal (arrowhead in A) and others by CHT (arrowhead in B), all terminals show signal from both antibodies: component channels are shown beneath each merged image. Both sets of images are maximum projections of confocal z-stacks from the 16 kHz region.