

Supplementary webappendix

This webappendix formed part of the original submission and has been peer reviewed. We post it as supplied by the authors.

Supplement to: Launer LJ, Miller ME, Williamson JD, et al, for the ACCORD MIND investigators. Effects of intensive glucose lowering on brain structure and function in people with type 2 diabetes (ACCORD MIND): a randomised open-label substudy. *Lancet Neurol* 2011; published online Sept 28. DOI:10.1016/S1474-4422(11)70188-0.

Members of the Action to Control Cardiovascular Risk in Diabetes (ACCORD) Memory in Diabetes (MIND) Study Group

National Institute on Aging Intramural Research Program, Bethesda, MD: L.J. Launer (PI), R. Kramer

MIND Coordinating Center: Wake Forest University School of Medicine, Winston-Salem, NC: J.D. Williamson (PI), M. Miller, L. Coker, J. Lovato, L. Lovato, J. Hepler, D. Felton, L. Andrews, S. Mayer, C. Carter, N. Woolard

MIND MR Reading Center: Department of Radiology, University of Pennsylvania, Hospital of the University of Pennsylvania, Philadelphia, PA: R.N. Bryan (PI), L. Desiderio, C. Davatzikos, M. Bilello, E. Melhem, D. Koka, E. Parmpi, H. Battapady, G. Erus

ACCORD Clinical center networks (CCNs) and clinical sites:

Canadian CCN: Population Health Research Institute, Hamilton Health Sciences/McMaster University, Canadian Diabetes Outcome Researchers (CANDOR Network), Hamilton, Ontario, Canada: H.C. Gerstein, S. Yusuf, S. Capes, Z. Punthakee, T. Cukierman-Yaffe, M. Vallis, S. Hall, P. Mackie, V. Reiding, R. Russo, B. Tadeson, K. Thompson

MIND: H.C. Gerstein (PI), T. Cukierman-Yaffe

Canadian clinical sites:

McMaster Medical Centre, Hamilton, Ontario, Canada: S. Capes, Z. Punthakee, A. Smith, T. Valla
Memorial University of Newfoundland, St. John's, Newfoundland, Canada: C. Joyce, M. Parsons, B. Rowe
St. Joseph's Health Care London, London, Ontario, Canada: I. Hramiak, M. Gehring, S. Tereschyn
Ottawa Hospital, Division of Endocrinology and Metabolism, Ottawa, Ontario, Canada: H. Lochnan, J. Maranger, M. McLean, R. Sigal

Winnipeg Regional Health Authority, Health Science Center, Diabetes Research Group, Winnipeg, Manitoba, Canada: V. Woo, L. Berard, T. Anderlic, A. Bernard, A. Mawani

Queen Elizabeth II Health Sciences Centre, Halifax, Nova Scotia, Canada: C. Abbott, E. Ur, G. McCarthy, M. Yuille, H. Murdock, T. Palmer, A. M. Patterson

ACCORD Minnesota-Iowa CCN: Berman Center for Outcomes & Clinical Research, Minneapolis, MN: R.H. Grimm, Jr, B.R. Kirpach, M.M. Bartkoske, C.M. Boyce, N. Druckman, A.M. Gillett, J.A. Levin, G.J. Livingston, A.M. Murray, K.L. Margolis, C. Truwit

MIND: A.M. Murray (PI), G.J. Livingston, K.L. Margolis

MIND MRI: C. Truwit

Minnesota-Iowa clinical sites:

Hennepin ACCORD Clinic, Minneapolis, MN: S. Kempainen, M. Madden, K. Hall, K. Wood.

International Diabetes Center, Minneapolis, MN: R. Bergenstal, R. Cuddihy, B. Davick, S. List, D. Whipple, C. Ashanti, D. Kendall

University of Minnesota, Minneapolis, MN: E.R. Seaquist, M.V. Mech, L.E. Benedict, D.J. Demmon, A.F. Kumar, S.M. Martinson, S.A. Miller, C. Pease, J.P. Rao, J.B. Redmon, J.E. Swanson, J.K. Wimmer, Y. Okorochoa, M. Stiles, C. Kodl, C. Chadha

University of Minnesota, Phalen Village Clinic, St. Paul, MN: KA. Peterson, L.A. Seaquist, C. Boese, T.J. Mendenhall, A.M. Peterson, A. Rudelt, T.M. Schrock

Riverside Health Partners Clinic, Department of Endocrinology, Minneapolis, MN: J.M. Sperl-Hillen, P.J. O'Connor, M.E. Busch, A. Chung, B.K. Klein, N. Krugen, T. Bunkers-Lawson, H.L. Ekstrom, H.S. Gunderson,

B.M. Johnson, J.H. MacIndoe, D.J. Prewedo, J.L. Rawl, C.M. Roethke, Mary Quinlan, C.R. Fox, B.M. Bate, Q.T. Cao, M.M. Ohnstad, P.J. Meyers
University of Iowa, Health Care Diabetes Clinical Research and Programs, Iowa City, IA: W.I. Sivitz, S.M. Wayson, T.A. Lower, K.A. Ochs, D. Wells

ACCORD Northeastern CCN: *Columbia University College of Physicians and Surgeons, New York, NY: J.T. Bigger, C.R. Lopez-Jimenez, R. Bornholdt, L. Busaca, H.N. Ginsberg, P. Gonzales, D. Gosh, P. Love, A. Kosok, E. Robinson, R. Steinman, C. Watson, G. Reyes*

MIND: R.M. Lazar (PI), K. Slane, C.R. Lopez-Jimenez, J. Hirsch, T. Brown

MIND MRI: *Columbia University Medical Center, New York, NY: J. Hirsch, T.R. Brown, S.M. Dashnaw, J. Cruz-Lobo*

Northeastern clinical sites:

Jacobi Medical Center, Bronx, NY: U.K. Schubart, J. Russo, N. Vincenty, K. Ibarando

Albert Einstein General Clinical Research Center, Bronx, NY: M.H. Alderman, L. Carroll, M.J. Sanguily, A.C. Mayer, L. Ramos

Cornell Internal Medicine Associates, New York, NY: D. Brillon, J. Cordero, R. Chiong, K. Hyams, C. Charles
The Cooper Health System, Cherry Hill, NJ: A. Bastien, S. Grudzinski, P. Niblack, L. Abreu, K. Brown, M. Casale, D. Dougherty, D. Linneman, M.A. Salvador, P. Zee, D. Hyman, D. Atabek, J. Miranda, I. Kumar, C. Baker

Great Lakes Medical Clinic Research, Westfield, NY: D.F. Brautigam, R. Fischer, D.M. Scharf, E. Brautigam, B. Nunn, J.M. Chiarot, C. Flanders

Naomi Berrie Diabetes Center, New York, NY: R. Goland, P. Kringas, J. Montes, J. Belle

Ambulatory Care Network at Columbia University, New York, NY: A. Getaneh, J. Ramirez, G. Kranwinkel, E. Vasquez

Irving Diabetes Research Unit, New York, NY: D.S. Donovan, G. Febres, C. Hernandez, M.A. Jonaitis, C. Lopez-Jimenez

State University of New York Downstate Medical Center, Brooklyn, NY: M.A. Banerji, M. Norton, P. Patel, S. Hirsch

Kings County, Brooklyn, NY: M.A. Banerji, M. Norton, P. Patel, S. Hirsch

ACCORD Ohio-Michigan CCN: *Case Western Reserve University, Division of Clinical and Molecular Endocrinology, Cleveland, OH: S. Genuth, F. Ismail-Beigi, M. Thibonnier, L. Vargo, C. Kelly, T. Bongorno, A. Dolish, L. Pavlik, M. Tiktin, S. Isteitieh, A. Bartlett, K. Yee, T. Kulow*

MIND: K. Horowitz (PI), L. Pavlik, A. Dolish, M. Tiktin

MIND MRI: *University Hospitals of Cleveland, Department of Radiology, Cleveland, OH: J. Sunshine, M. Clampitt*

Ohio-Michigan clinical sites:

University Hospitals of Cleveland, Division of Endocrinology, and University Hospitals Westlake Medical, Cleveland, OH: F. Ismail-Beigi, A. Krikorian, L. Moore, L. Richardson, E. Coles-Herman, J. Frankino, A. Sood, L. Hustak, M. Julius, L. Pavlik, T. Ross, L. Long, M.K. Sullivan, L. Strauss, K. Behm, F. Eskandari, C. Hall, D. Hayes, K. Horowitz, S. Isteitieh, Z. Madhun, E. Seeholzer, J. Shina, H. Taylor, A. Schnall

St. Vincent Charity Hospital, Lipid Research Center, Cleveland, OH: L.S. Sadler, M. Griffith, A. Hornsby, K. Klyn, E. Ospelt, L. Long, M. DeSmit, P. McCann, N.P. Schmidt, T. Kulow, J. Zaletal

University Suburban Health Center, South Euclid, OH: A.M. Schnall, L. Dragmen, R. Ellert, J. Smith, J. Leksan, T. Sussman

Cleveland Veterans Affairs (VA) Medical Center (VAMC), Department of Medicine, and Ravenna Community Based Outpatient Clinic, Cleveland, OH: F. Ismail-Beigi, L. Hustak, M. Julius, W. Schwing, C.

Hall, K. Horowitz, S. Isteitieh, C. Johnson, E. Kern, M.A. Richmond, L. Richardson, K. Roberts, J. Shina, P. Suhan, H. Taylor, S. Watts, J. Martin, G.J. Strauss
Medical University of Ohio, Department of Medicine, Ruppert Health Center, Toledo, OH: B. Akpunonu, R. Franco-Saenz, J. Gilmore, M. Gilmore, P. Ross, B. Bauer, R. Pop-Busui, J. Roman, Z. Blust
Henry Ford Health System–New Center One, Detroit, MI: A. Thomas, D.M. Kahkonen, T. Cushman, M. Roman, A.M. Stys, K. White, M. Austin, C. Chatterton, J.K. Francis, C. Jones, D. Kruger, A. McLellan, F. Whitehouse, E. Higgins, S. Levy, A. Schoenherr

ACCORD Southeastern CCN: *Wake Forest University School of Medicine, Department of Public Health Sciences, Winston-Salem, NC:* D.C. Goff, Jr, J.H. Summerson, L. Crago, C.S. Blackwell, A. Bertoni, R.L. Blaine, J.K. Kirk, R.L. Spach, J. Williamson, J. Calles, J. Katula, D.B. Wishnietsky, N. Woolard, S. Mayer, L. Gordineer

MIND: J. Williamson (PI), N. Woolard, Jingzhong Ding

MIND MRI: *Wake Forest University School of Medicine, Center for Biomolecular Imaging, Winston-Salem, NC:* J. Maldjian, S. Kaminsky, D. Fuller

Southeastern clinical sites:

Duke University Medical Center, Durham, NC: M.N. Feinglos, J. Jones, G. Gedon-Lipscomb

Wake Forest University School of Medicine, Department of Geriatrics/Gerontology, Winston-Salem, NC: H.H. Atkinson, J. Stanfield, T. Delvalle-Fagan

Downtown Health Plaza, Winston-Salem, NC: C.F. Pedley, S. Mauney

University of North Carolina, Diabetes Care Center, Chapel Hill, NC: J.B. Buse, M.D. Duclos, R.E. Kirby, A. Goley, K. Vukojcic

Holston Medical Group, Kingsport, TN: J.L. Miller, W. Besterman, S.M. Norton, M. Surgener

Carolinas Medical Center Family Practice, Charlotte, NC: M. Dulin, T. Barringer, C. Morris, S. Norton

Robeson Health Care Corporation, Fairmont Clinic, Fairmont, NC: R. Peace, D.O. Stuart, J. Strickland, L. Cummings, J. Stanfield

Robeson Health Care Corporation, Julian T. Pierce Clinic, Pembroke, NC: R. Peace, J. Strickland, L. Cummings, J. Stanfield

Wake Forest University School of Medicine, Departments of Internal Medicine and Endocrinology, Winston-Salem, NC: J.R. Crouse, J. Ellis

Tulane University Health Science Center, New Orleans, LA: V. Fonseca, J. John-Kalarickal, S.M. Leger, K. Munshi

Kaiser Permanente, Crescent Medical Center, Tucker, GA: J. Barzilay, K. Bader, M. Elay

ACCORD Western CCN: *University of Washington, Seattle, WA:* J.L. Probstfield, M.D. Sullivan, C. Kingry, J.M. Johnson, A.S. Line, M.A. Corson, R. Knopp, E. Lipkin, C. Griswold, K. Liebert, A. Brown, D. Juliano, E.M. Kurashige, S. Moberg, J. Leader

MIND: *University of Washington, Seattle:* M.D. Sullivan (PI), J.M. Johnson

Western MIND sites:

Northridge Hospital Medical Center, Cardiovascular Center, Northridge, CA: M. Ariani, H. Gutierrez

University of Washington Medical Center at Roosevelt, Family Medical Center, Seattle, WA: R. Failor, A. Ellsworth, N. Jackson, K. Capoccia

Idaho State University, Department of Family Medicine, Pocatello, ID: R. Force, M. Macdonald, S. Koester, K. Pettingill

Naval Medical Center San Diego, Cardiology Division, San Diego, CA: P. Linz, P. Pepper, S. Griffin, J. Kozlowski, M. Engle, P. Gutierrez

Oregon Health & Science University, Section of Diabetes, Portland, OR: M. Riddle, P.A. McDaniel, S.C. Gammell-Matthews, B. MacNeil, S. DesRochers, R. Swift

Washington State University, Spokane, WA: C. Wysham, D. Weeks, L. Kuntsmann

Kaiser Endocrine Clinic, San Diego, CA: J. Dudl, P. Wu, L. Lyons, B. House, M. Murray, A. Palma, R. Stevenson

Whittier Institute for Diabetes, Clinical Trials Department, La Jolla, CA: G. Dailey, A. Philas-Tsimikas, A. Giannella, A. Bravo-Medina, M. Jacobson, E. Farro, S. Cruz, N. Juarez, C. Dadkhah

Supplementary Material Figure and Table Legends

eTable 1. Baseline Characteristics in the ACCORD-MIND Cohort Compared to the Rest of ACCORD Eligible for MIND

eTable 2. Baseline Characteristics of the ACCORD-MIND MRI Cohort Compared to the Rest of ACCORD MIND

eTable 3. Reasons for a Missing Follow-Up MRI Scans

eFigure 1. Data shown are for the results for the primary cognitive outcome, the Digit Symbol Substitution Test. The horizontal bars represent 95% confidence intervals, and the vertical dashed line indicates the least square mean difference. The size of each square is proportional to the number of patients. P values are for tests for interaction.

eFigure 2. Data shown are for the results for a secondary cognitive outcome, the Rey Auditory Verbal Learning Test. The horizontal bars represent 95% confidence intervals, and the vertical dashed line indicates the least square mean difference. The size of each square is proportional to the number of patients. P values are for tests for interaction.

eFigure 3. Data shown are for the results for a secondary cognitive outcome, the Stroop Test. The horizontal bars represent 95% confidence intervals, and the vertical dashed line indicates the least square mean difference. The size of each square is proportional to the number of patients. P values are for tests for interaction. A positive difference reflects poorer performance.

eTable 1

	ACCORD-MIND	Rest of ACCORD Eligible for MIND
Number Enrolled (%)	2977 (53)	2598 (47)
Age – mean (sd) years	62.5 (5.8)	63.0 (6.0)
Sex: Female, %	46.6	46.2
Education, %		
Less than HS graduate	13.2	18.3
HS graduate/GED	25.8	26.4
Some college/tech	34.5	30.6
College graduate or more	26.5	24.7
Network, %		
Canada	10.1	13.2
Western	20.5	16.6
Minn/Iowa	22.6	14.4
Ohio/Mi	12.1	14.1
Northeast	12.6	19.9
Southeast	22.2	21.8
VA	0	0
Race, %		
White, Non-Hispanic	69.7	65.1
Black, Non-Hispanic	16.3	20.6
Hispanic	7.1	8.0
Other	6.9	6.3
Smoking Status, %		
Current	11.8	13.3
Former	43.5	41.9
Never	44.6	44.8
Self-reported history of depression	26.4	24.0
Systolic BP – mean (sd) mm Hg	135.5 (17.8)	137.4 (17.3)
Diastolic BP – mean (sd) mm Hg	74.8 (10.7)	75.3 (10.6)
Duration of Diabetes – mean (sd) years	10.4 (7.4)	11.1 (7.8)
HbA1c – mean (sd)	8.3 (1.1)	8.2 (1.0)
Total Cholesterol (mg/dl)*	183.4 (42.0)	186.1 (42.2)
Low-density lipoprotein (mg/dl)*	103.5 (33.7)	107.5 (34.6)
High-density lipoprotein (mg/dl)*		
Women	47.1 (12.1)	47.5 (13.2)
Men	38.6 (9.3)	39.3 (10.0)
BMI – mean (sd)	33.0 (5.4)	32.3 (5.6)
History of CVD, %	29.2	30.3

* To convert to millimoles per liter, multiply by 0.02586.

eTable 2

	MIND-MRI*	MIND w/o MRI*
Age (yrs)	62.4 (5.7)	62.5 (5.9)
Female %	44.4	47.2
Race %		
White, Non-Hispanic	69.1	70.5
Black, Non-Hispanic	16.7	16.2
Hispanic	6.5	7.3
Other/Missing	7.7	6.0
Education %		
Less than HS graduate	10.3	13.9
HS graduate/GED	24.0	26.3
Some college/tech	34.2	34.6
College graduate or more	31.5	25.2
History of CVD %	25.7	30.1
Smoking Status %		
Never	44.8	44.6
Former	42.1	43.9
Current	13.1	11.5
Hyperlipidemia %	68.6	63.1
Hypertension %	80.6	81.5
Systolic Blood Pressure (mmHG)	134.7 (17.9)	135.7 (17.7)
Duration of Diabetes (yrs)	9.9 (7.2)	10.5 (7.4)
HbA1c %	8.2 (1.0)	8.3 (1.1)
Serum glucose: mg/dl	173.1 (54.3)	176.1 (55.2)
Depression [PHQ % > 10]†	15.2	18.5
Baseline DSST†	53.4 (16.1)	52.3 (15.8)
Baseline RAVLT†	7.5 (2.5)	7.5 (2.6)
Baseline Stroop†	31.0 (15.5)	32.3 (17.0)
Baseline Mini Mental†*	28 (27 – 29)	28 (26 – 29)

* For continuous variables, mean (sd)

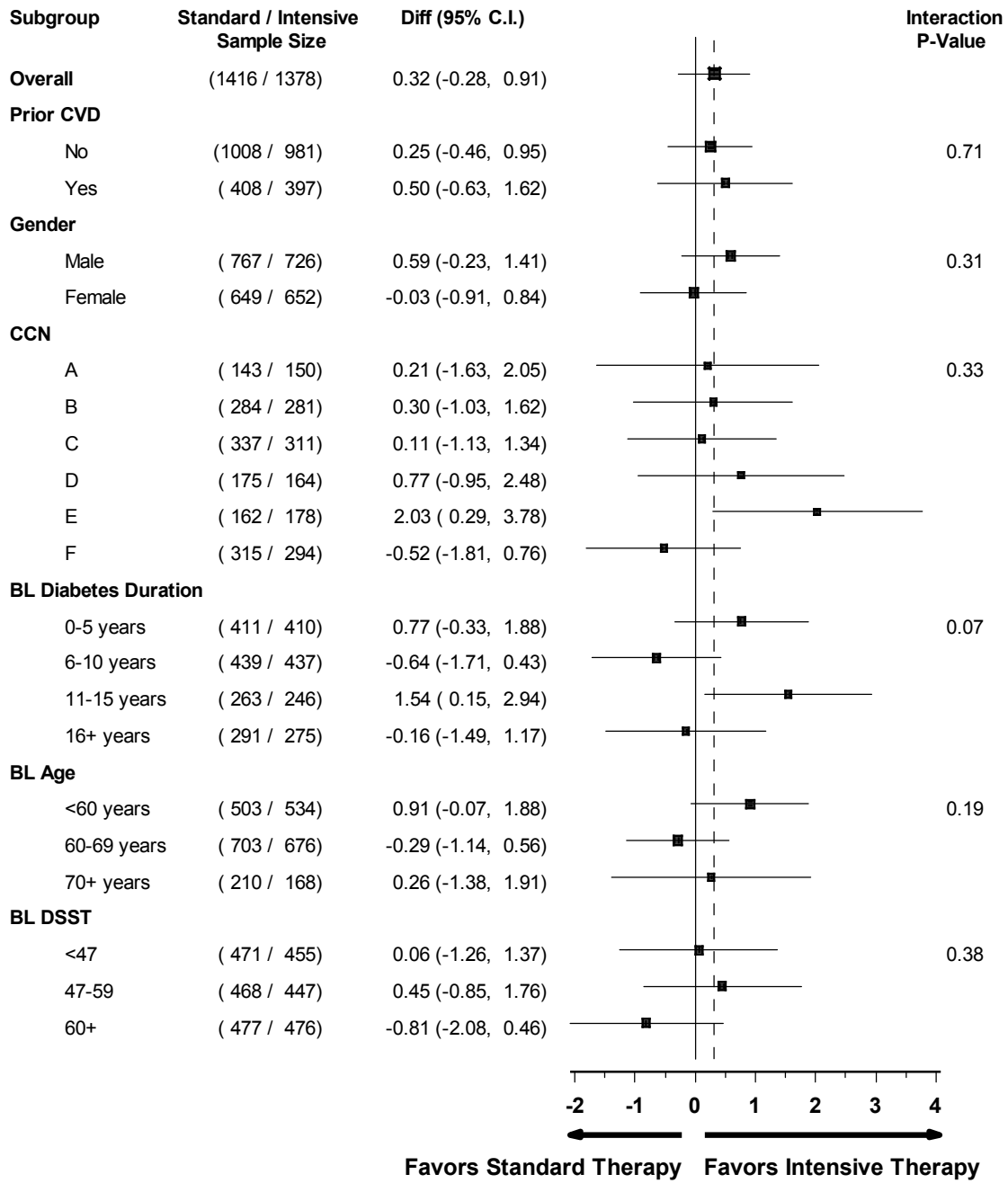
† DSST: number of correct cells (possible range 0 – 90); RAVLT: total number of words recalled (possible range 0 to 15); Stroop: Interference score; MMSE: possible range 0 – 30; PHQ: possible range 0 – 27

eTable 3

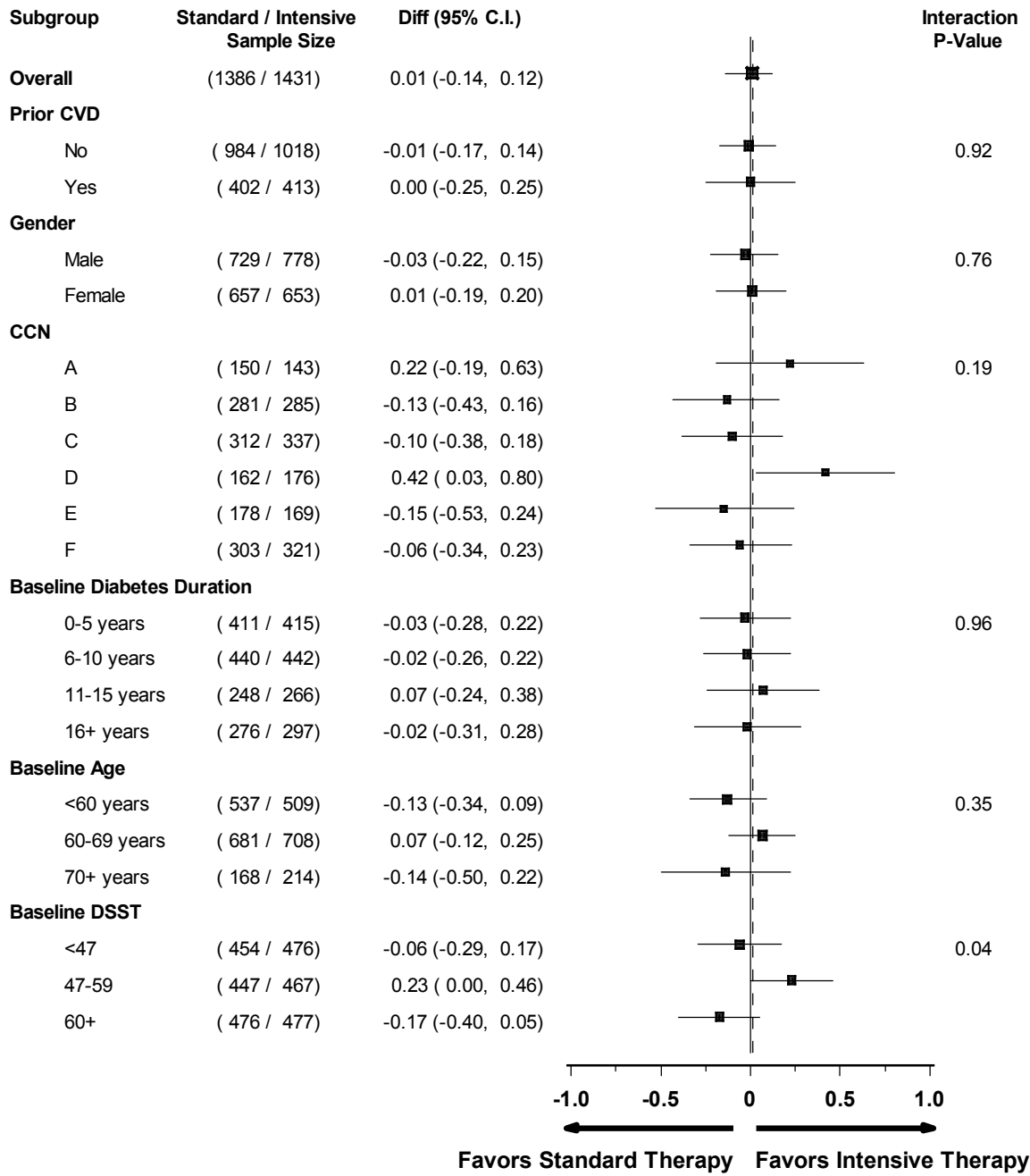
Reason	Glycemia Intervention*	
	Intensive (n=294)	Standard (n=320)
Death before 40 month visit	11 (3.7)	7 (2.2)
Poor image quality	6 (2.0)	3 (0.9)
MRI exclusion	8 (2.7)	5 (1.6)
Claustrophobic / very high BMI	3 (1.0)	2 (0.6)
Refused / Withdrew Consent	11 (3.7)	6 (1.9)
Moved	7 (2.4)	5 (1.6)
Unknown	18 (6.1)	19 (5.9)
Total	64 (21.8)	47 (14.7)

* Data shown are N (percent of total available baseline scans)

eFigure 1



eFigure 2



eFigure 3

