

Excision of Nonpalpable Breast Cancer with Indocyanine Green Fluorescence-Guided Occult Lesion Localization (IFOLL)

Fatih Aydogan^a Volkan Ozben^b Erman Aytac^a Halit Yilmaz^c Ali Cercel^a Varol Celik^a

^aDepartment of General Surgery, Istanbul University Cerrahpasa Medical School, Istanbul

^bGeneral Surgery Clinic, Surmene State Hospital, Surmene, Trabzon,

^cDepartment of Radiology, Istanbul University Cerrahpasa Medical School, Istanbul, Turkey

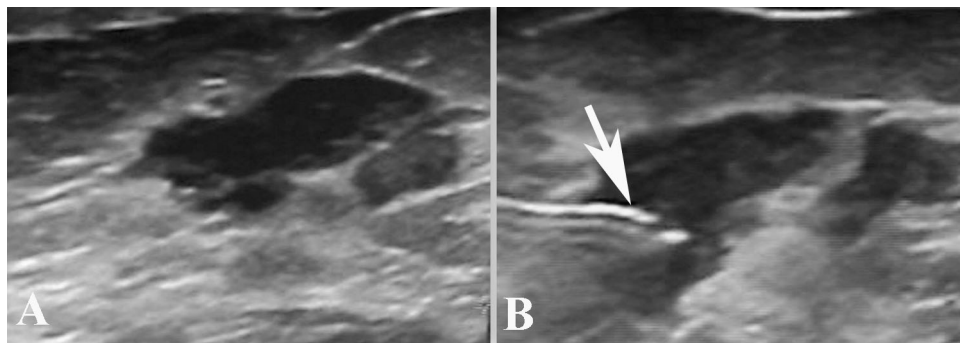


Fig. 1. Ultrasonographic appearance of a nonpalpable breast lesion: **A** hypoechoic mass with irregular margins; **B** intralesional injection of indocyanine green (ICG) solution with a spinal needle under ultrasound guidance (arrow).

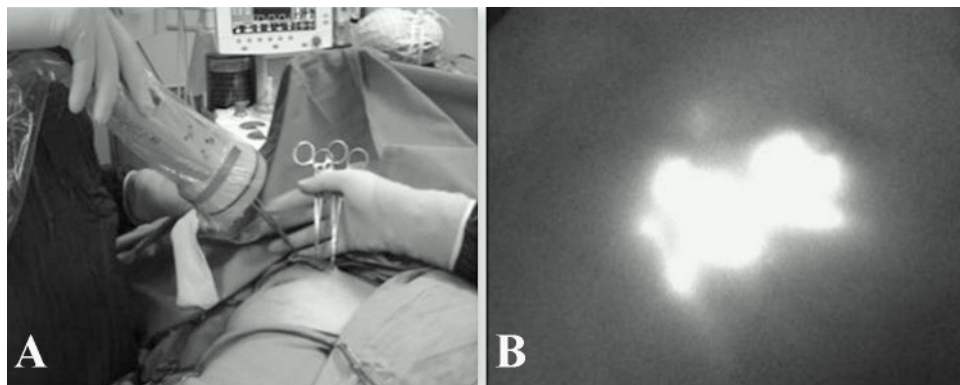


Fig. 2. **A** During surgery, a near-infrared-sensitive imaging system was used to observe **B** the area of indocyanine green (ICG)-derived fluorescence.

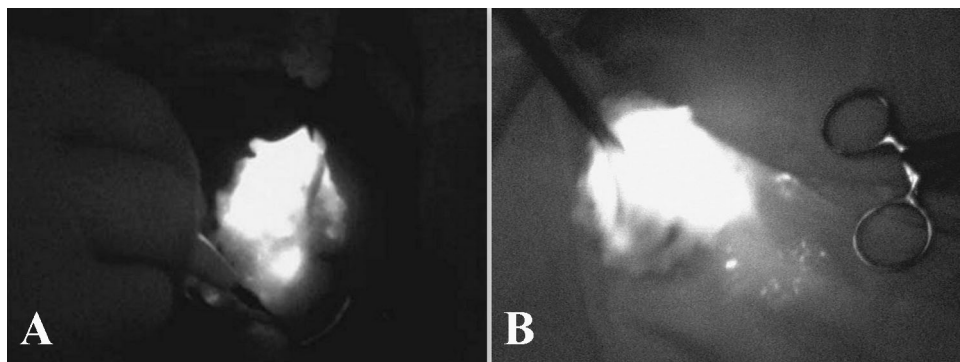


Fig. 3. **A** The resection margins were defined under the guidance of fluorescence imaging; **B** appearance of the specimen after excision.