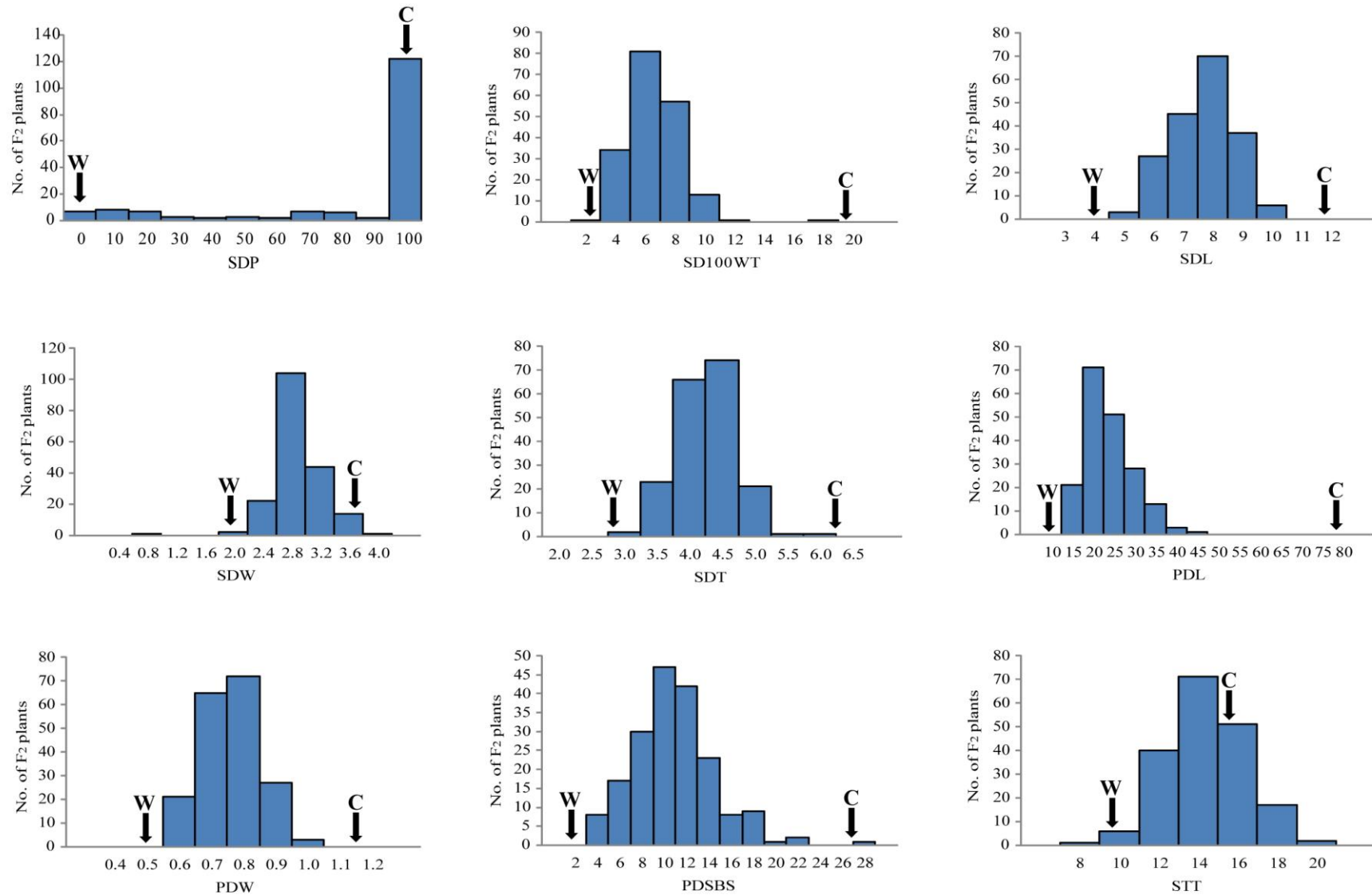


SUPPLEMENTARY DATA

FIG. S1. Domestication-related traits examined in F_2 population (JP81610 \times TVnu457). JP81610 is a cultivated (C) accession and TVnu457 is a wild (W) accession.



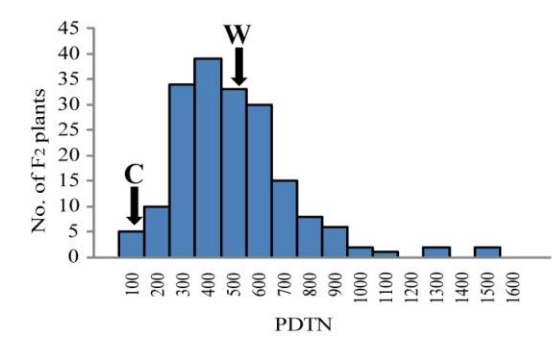
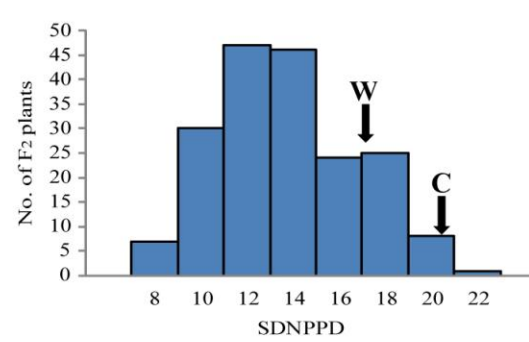
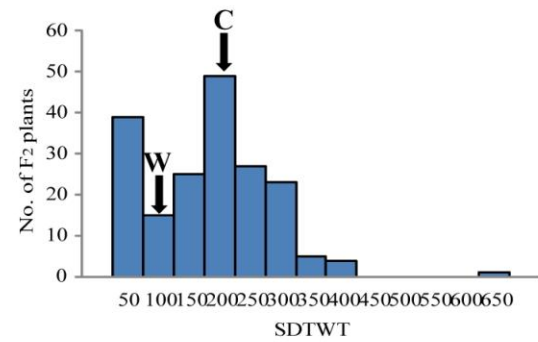
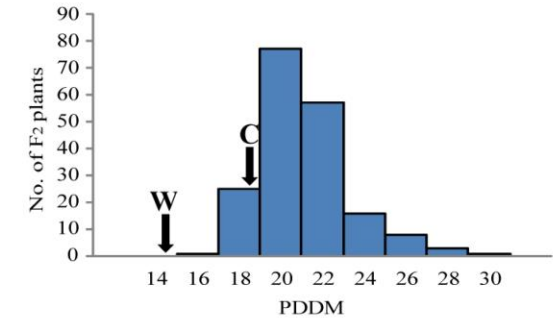
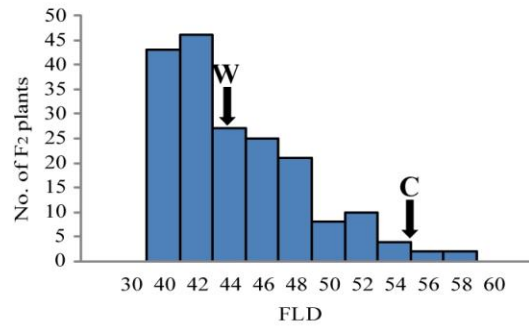
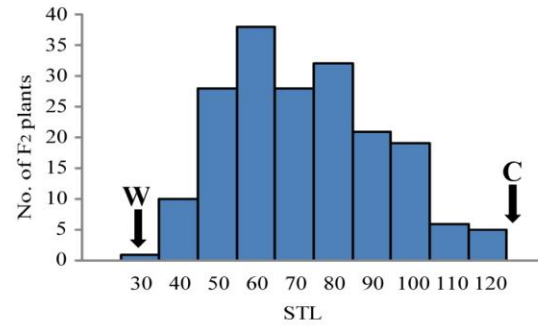
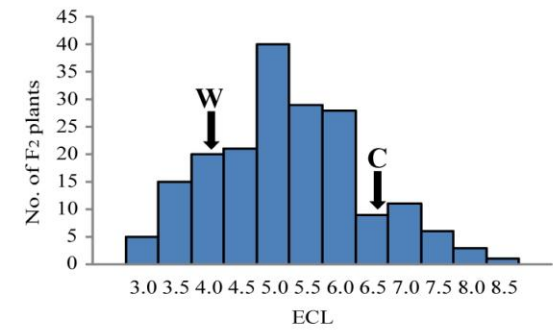
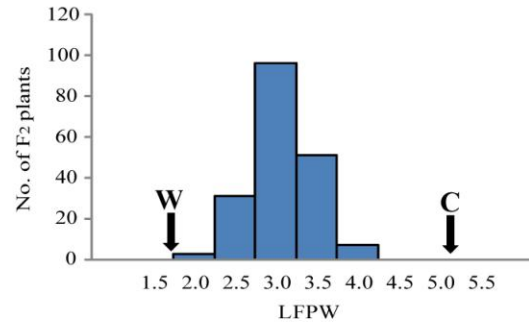
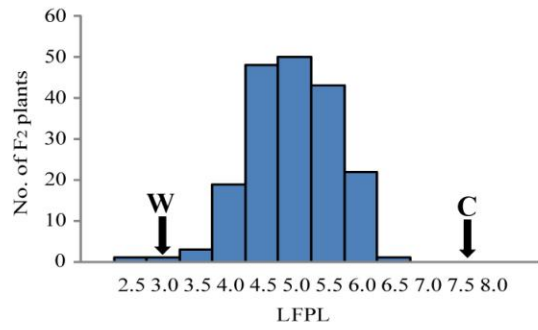


FIG. S2. Domestication-related traits examined in BC_1F_1 population [(JP81610 \times TVnu457) \times JP81610]. JP81610 is a cultivated (C) accession and TVnu457 is a wild (W) accession.

