

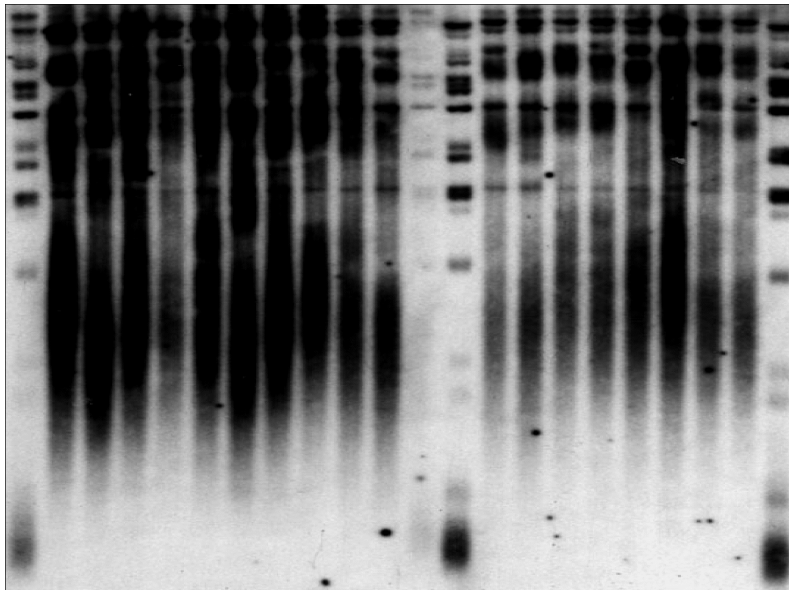
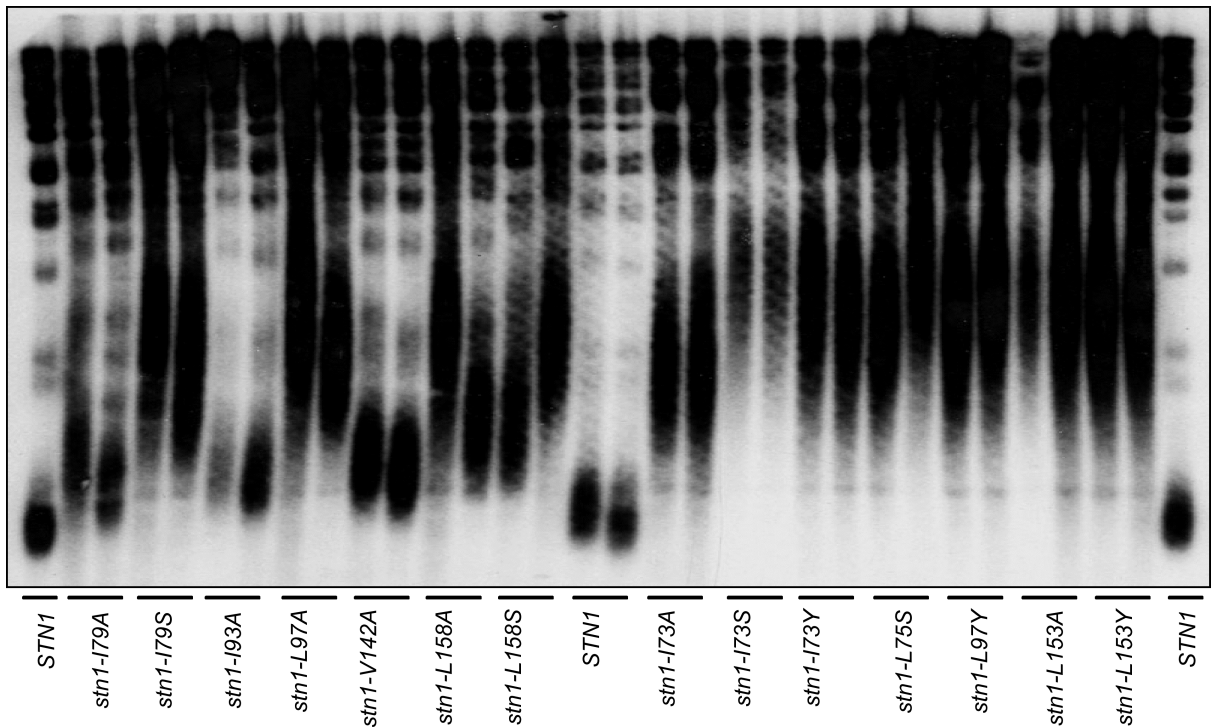
A**B**

Figure S4 Telomere length of strains expressing *stn1*⁻ missense mutations in residues selected for reverse mutagenesis based on either (A) Evolutionary Trace or (B) position of the side-chain relative to the interior of the β -barrel of the essential N-terminal OB-fold domain of Stn1; *stn1* Δ strains with *CEN* plasmids expressing the indicated mutations were grown at 23° prior to preparing genomic DNA for telomere length analysis.