

Supplementary Figure 1

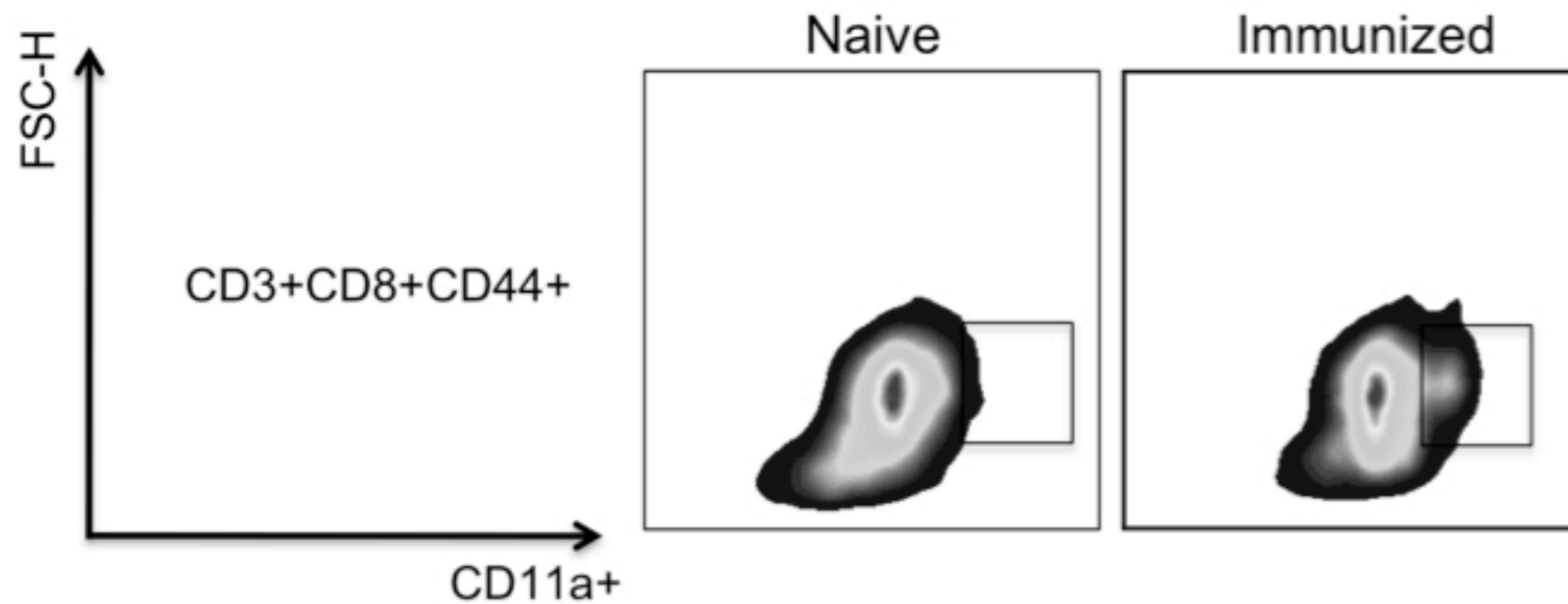
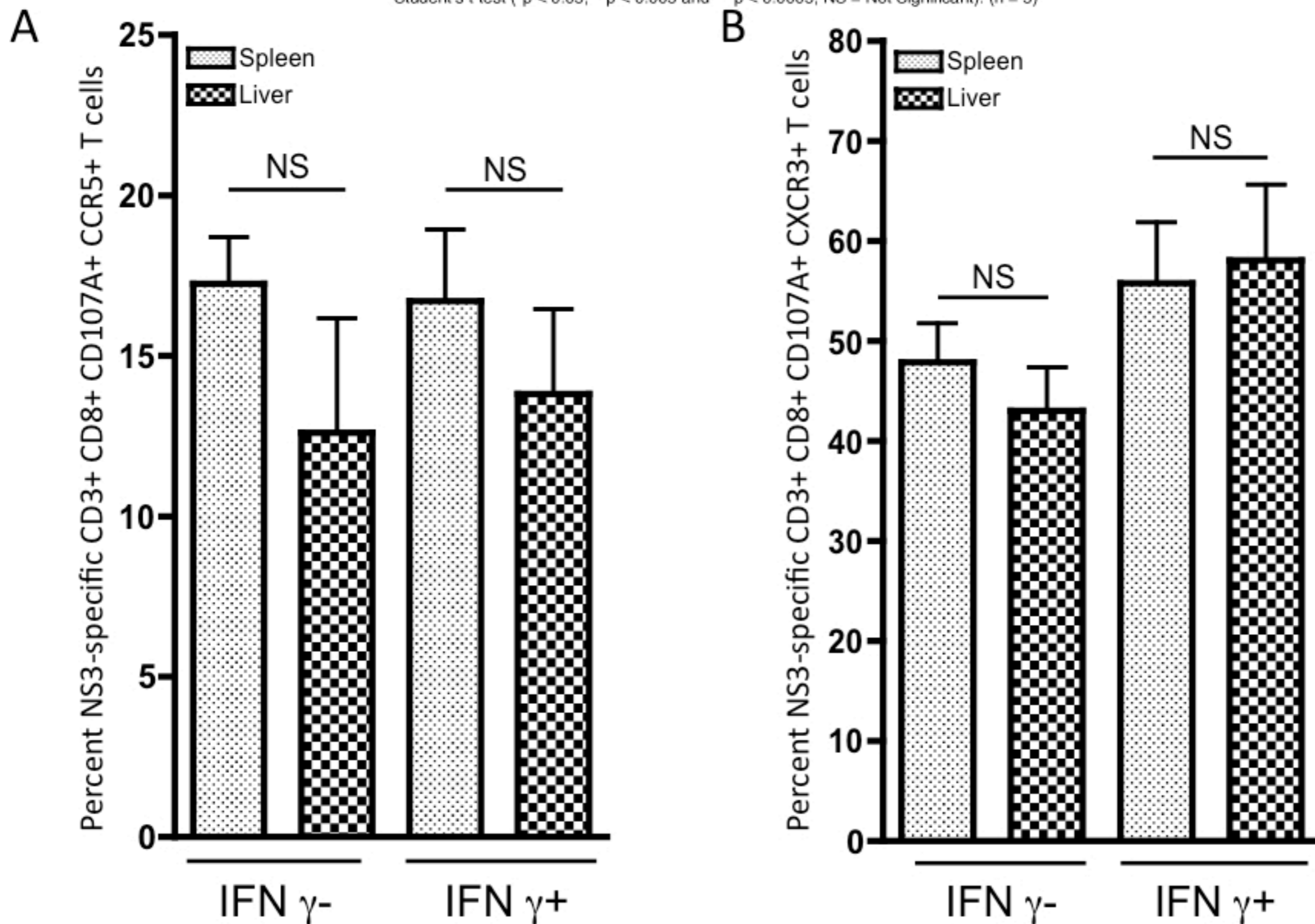


Figure S1. HCV-specific effector CD8⁺ T cells. Representative HCV NS3-specific CD8⁺ effector T-cell staining in both the naïve and immunized group. HCV NS3-specific CD8⁺ effector T cells were defined as positive staining for CD3, CD8, CD11a and CD44.

Supplementary Figure 2

Figure S2. CCR5+ and CXCR3+ expression on HCV NS3-specific CD8+ T cells. (A) Percentage of CCR5+ CD8+ CD107A+ IFN- γ - or CCR5+ CD8+ CD107A+ IFN- γ + T cells present within the spleen as compared with the liver. (B) Percentage of CXCR3+ CD8+ CD107A+ IFN- γ - or CXCR3+ CD8+ CD107A+ IFN- γ + T cells present within the spleen as compared with the liver. Significance was determined by Student's t-test (* $p < 0.05$, ** $p < 0.005$ and *** $p < 0.0005$, NS = Not Significant). (n = 5)



Supplementary Figure 3

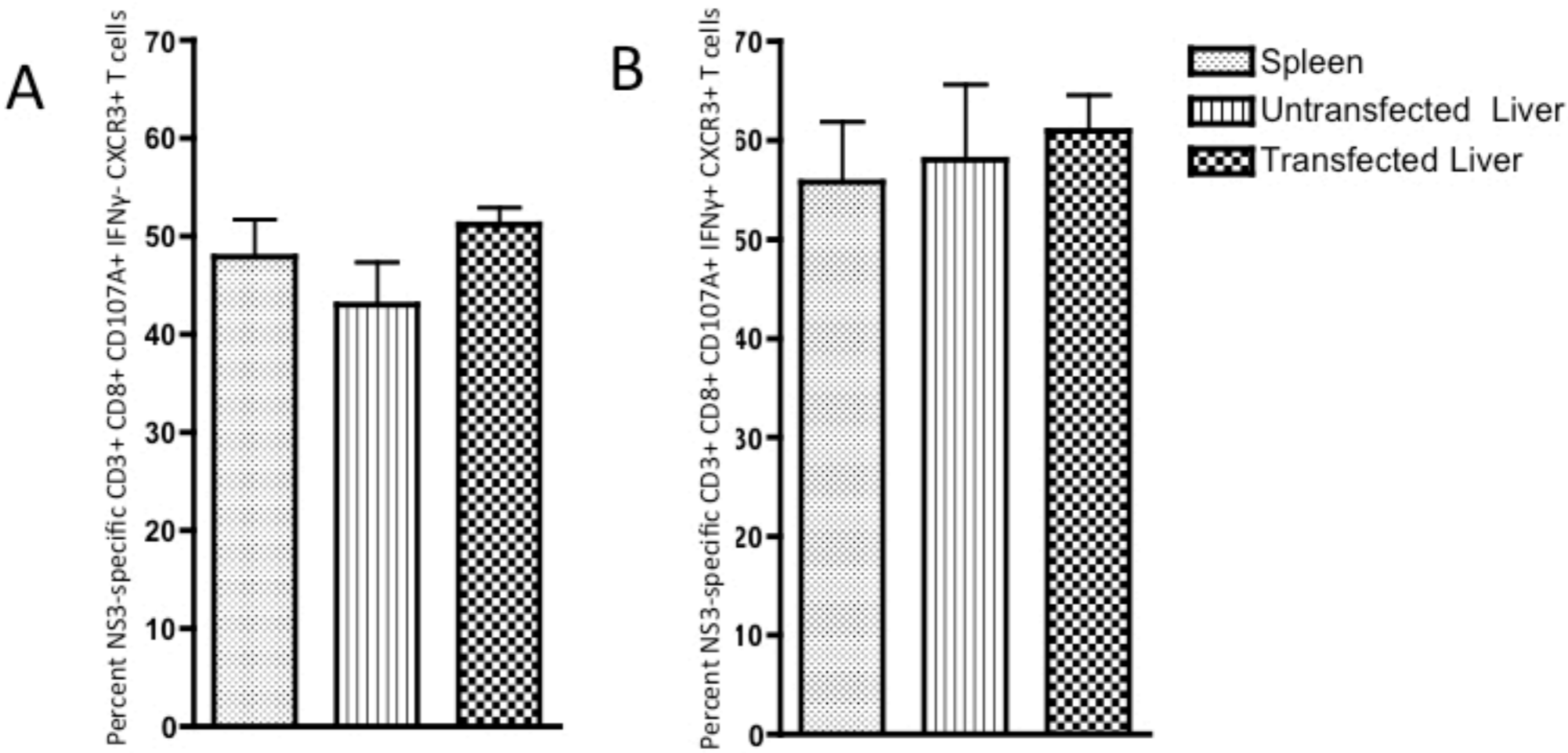


Figure S3. CXCR3+ expression on intrahepatic HCV NS3-specific CD8+ T cells following HCV NS3 transfection within the liver. Percentage of: A) CXCR3+ CD8+ CD107A+ IFN- γ - B) CXCR3+ CD8+ CD107A+ IFN- γ +. Significance was determined by Student's t-test (*p < 0.05, **p < 0.005 and ***p < 0.0005; NS, Not Significant). (n = 5)