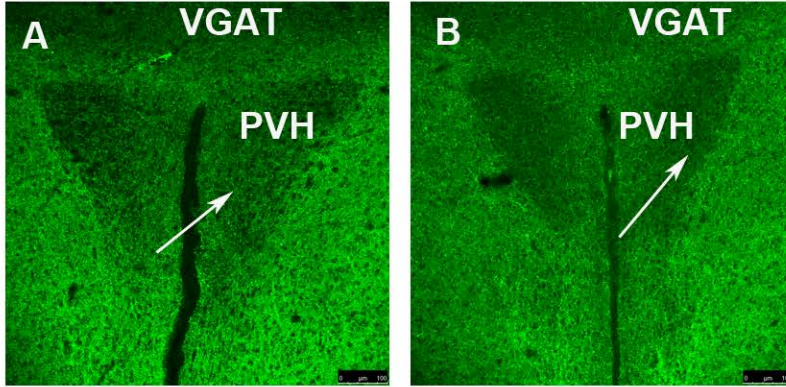


Supplemental Figure 1. VGAT immunoreactivity in the hypothalamus of *Lox-Vgat* mice (A) and *LepR-Ires-Cre:lox-Vgat* mice (B). Great reduction of VGAT positive punctate structures in Arc, VMH and DMH in B compared to A, whereas that in ME retained. Arc: arcuate nucleus; VHM: ventral medial hypothalamus; DMH: dorsal medial hypothalamus; LH: lateral hypothalamus and ME: median eminence. Scale bar=100 microm)



Supplemental Figure 2. VGAT immunoreactivity in the PVH of Lox-Vgat mice (A) and LepR-Ires-Cre:lox-Vgat mice (B). Punctate VGAT positive structures were observed in A (arrow), which was reduced in B (arrow). PVH: paraventricular hypothalamus.