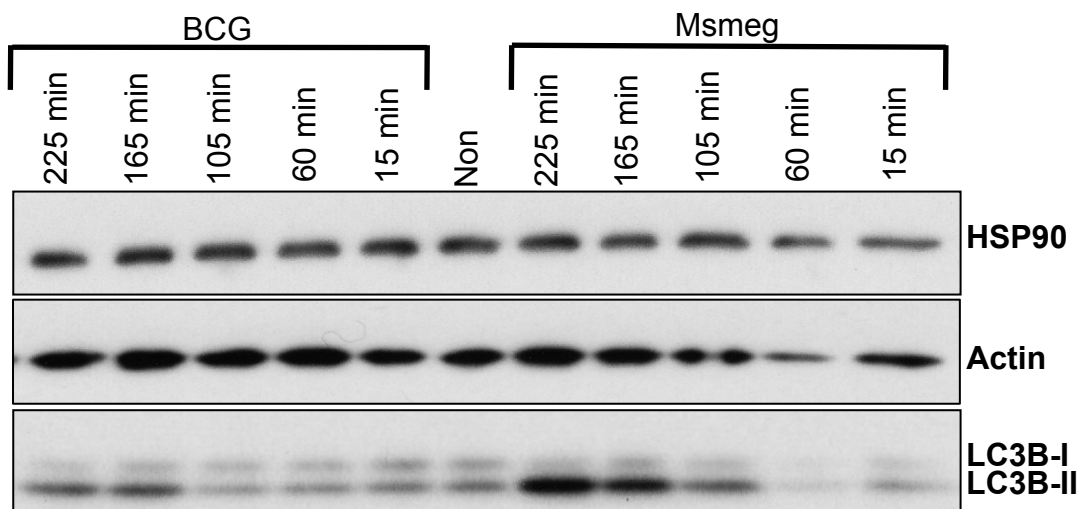


**Supplemental Figure 1.** RAW cells were infected with *M. smegmatis* and BCG. Protein lysates were harvested at the indicated time points

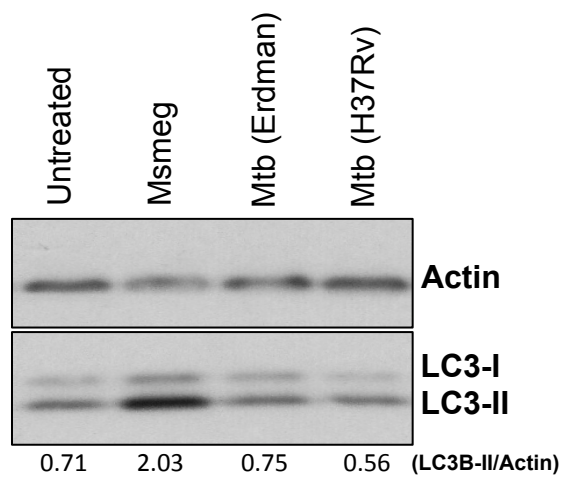
**Supplemental Figure 2.** Comparison of autophagy responses elicited by pathogenic mycobacteria after 24 hours of infection. RAW cells were infected with the indicated mycobacteria for 24 hours and Western Blots were performed. Shown is the LC3-II/Actin ratio for each sample obtained from one experiment.

**Supplemental Figure 3. (A)** RAW cells were infected with BCG +/- Rapamycin and Western blot for eIF4B and phosphorylated eIF4B were performed. **(B)** RAW cells were either left untreated, starved in HBSS, infected with *M.smegmatis*, or infected with *M.smegmatis* and starved in HBSS.

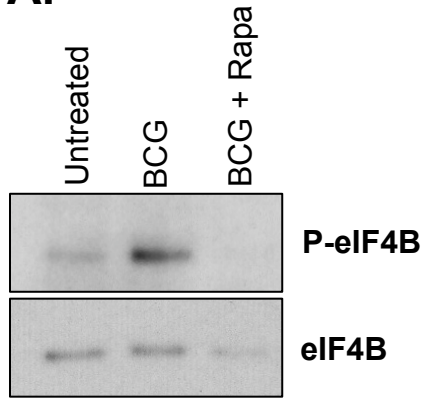
**Supplemental Figure 4.** RAW cells loaded with DQ-BSA were treated overnight with either heat killed *M. smegmatis* or BCG and flow cytometry was used to measure the percentage of DQ-BSA+ cells.



Supplemental Figure 1



**A.**



**B.**

