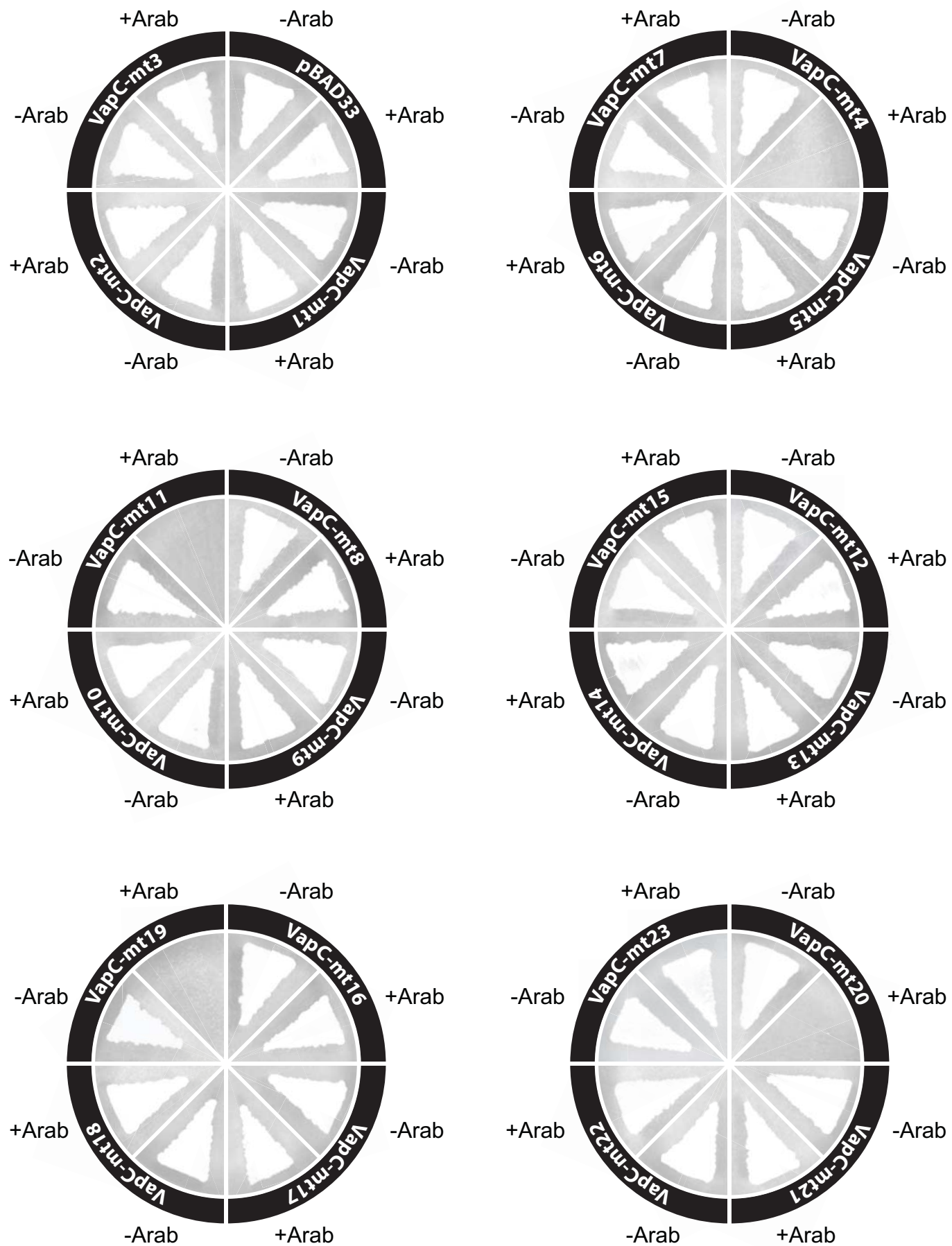
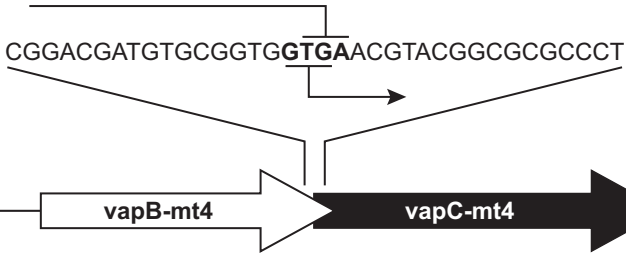


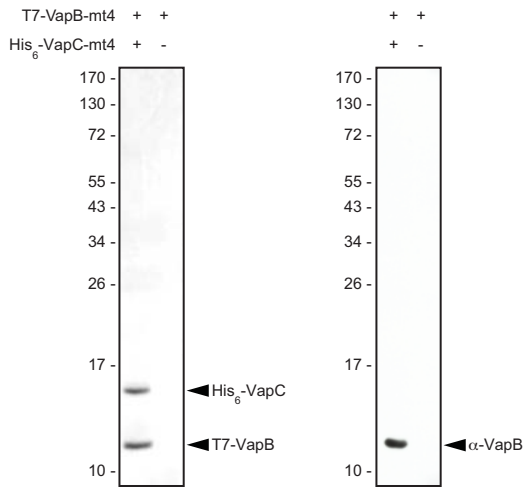
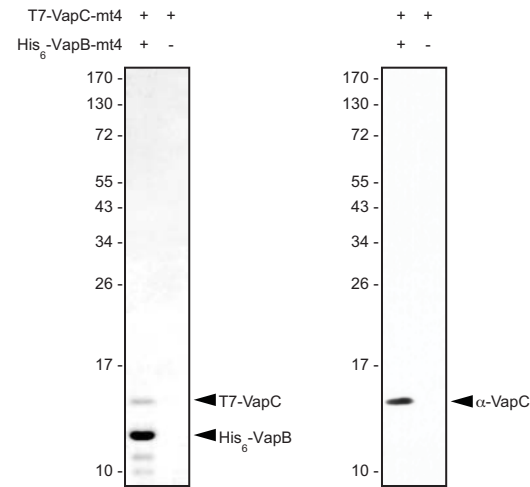
Supplemental Figure 1



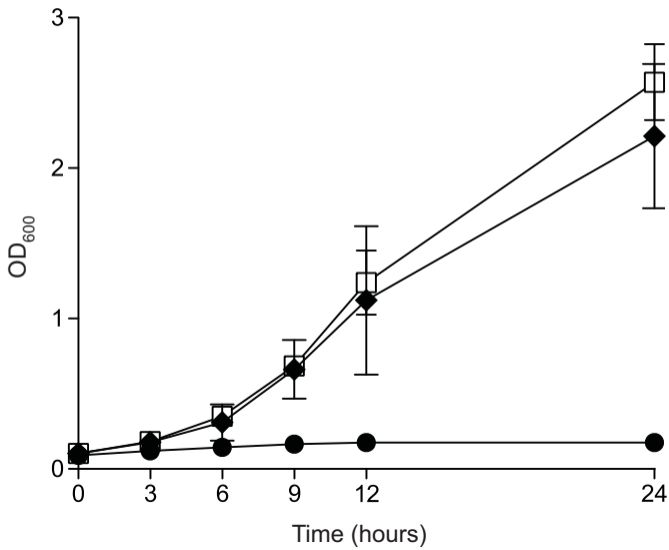
Supplemental Figure 2



Supplemental Figure 3

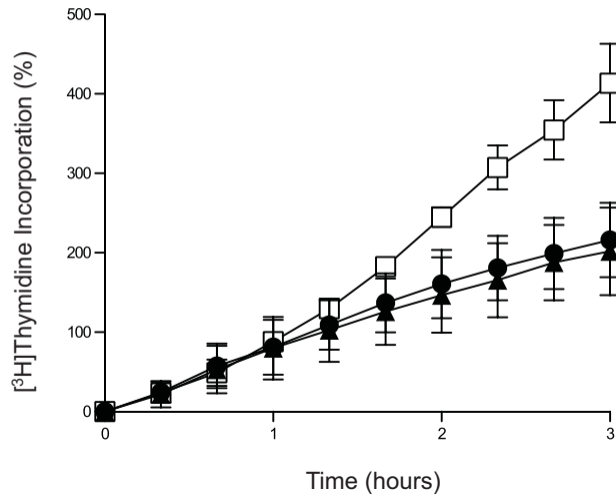
A**B**

Supplemental Figure 4

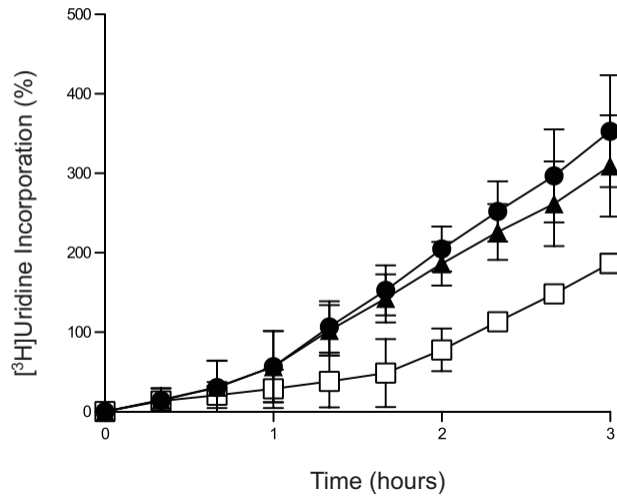


Supplemental Figure 5

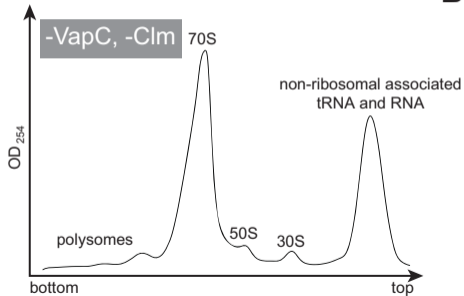
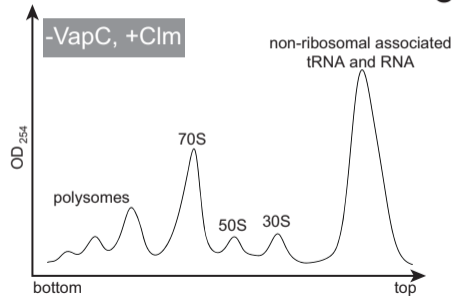
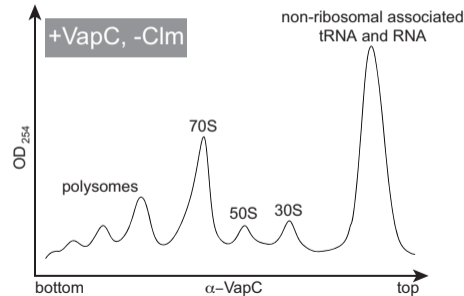
A



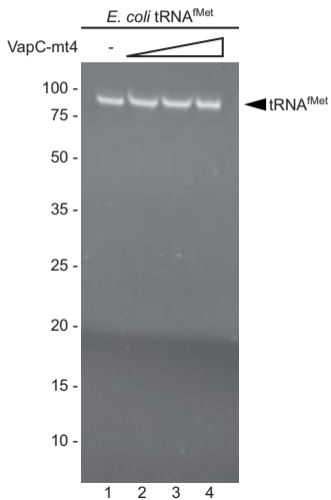
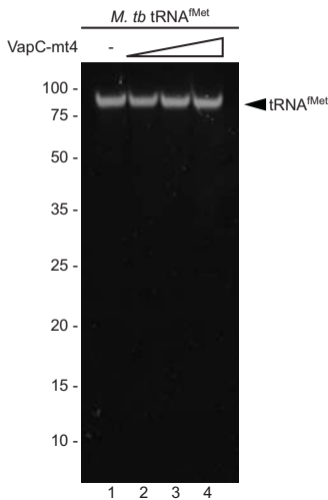
B



Supplemental Figure 6

A**B****C**

Supplemental Figure 7

A**B**

Supplemental Figure 8

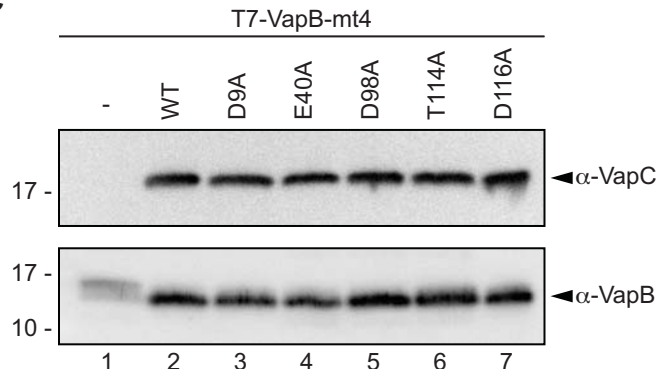
A

VapC-mt4	RALADTSVFIGIEATRFDP-----DRFAGYEWGVSVVTLGELRLGVL (49) INDSWIAATAVAH-GIAILFIQNDYA 5-116
PAE2754	EYLVDASALYAL-AAHYDK-WIKH-----REKLAILHLTIYEAGNALW (45) FYDASYAYVAES-SGLVLVFIQDRELL 4-114
AF0591	CAVVDTNVLMYVYLNKAD--VVGQLREFGFSRFLITASVKRELEKLEM (27) EGDPSLIEAAEK-YGCILIFMDKELK 13-110
FitB	MILLDTNVISEPLRPQPNERVVAWLDSLILEDEVYLSAITVAELRLGVA (53) AADGYIAATAKQH-SLTVAFIRDTGSF 1-122
SMG-5	YVLMQYDVIVDKIRIALKIWDI----DDFICILPSTVLDELQYQKTKN (41) AEDHKHIVAF (8) KEMEGVTFYIDIDQF 427-543
NMD4p	NFIIDASAFEKGLGNIKRWCSDCTEAVTLNFYIPTFTLNELDFLQRR (57) KRLKNLLKSC (13) HWFLIIS-EDPQIR 5-143
anon34Ea	FVVVDSKALTEYNGIVKSLVR----TKKCIVLIPNAVLNELDLKKRS (39) KMDRDASVFL (24) VVTYLS-GDNLHE 1013-1141
PolI	LFVIDASGFIFRAYFALPEMK (17) NKLIKEFSPEYMISVFDGPNKQ (46) EADDVIASIA (9) YKVYVCF-ADKDLL 4-138
RNase H	ICLIDFSQIALSTALVNFPDK (19) VKKAKTLGYTKIVLCIDNAKSGY (52) EADDHIAVLV (7) HKILIIIS-SDGDFT 15-159
FENI	KVAIDGMNALYQFLTISRRLD (20) KTIHLLENDITPIWVFDGPEPKL (65) EGEAQASYMAKKGDVWAVVSIQDYDAL 23-177

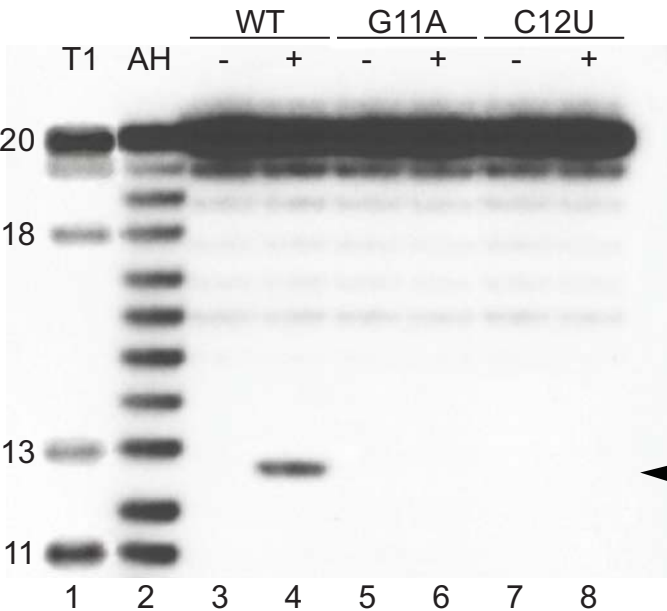
B



C



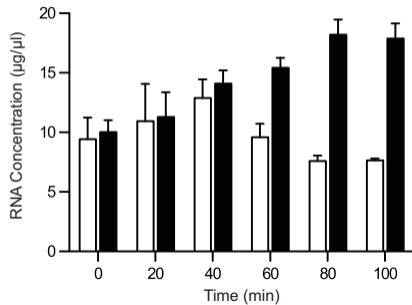
Supplemental Figure 9



5' AGGAAGAU**ACGCG**GAUAUGAA 3'

2 3 6 11 13 18

Supplemental Figure 10

A**B**