

Figure S1

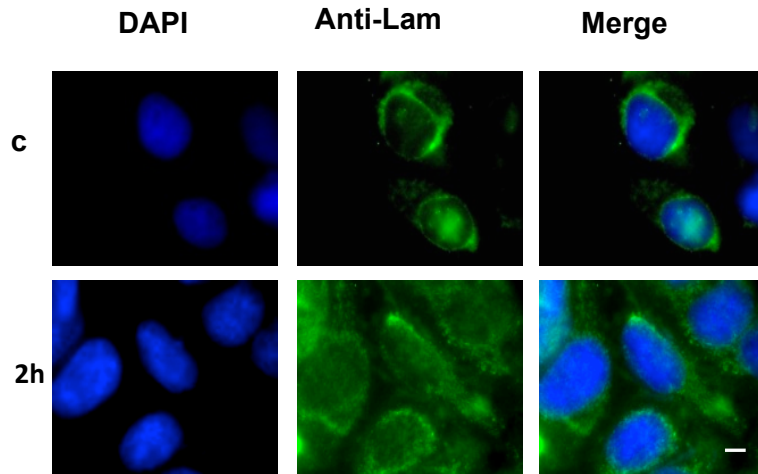


FIGURE S1. Disintegration of nuclear lamin following treatment with C7H2 peptide. HeLa cells were treated with 0.3 mM C7H2 for 2 h. Left column: DAPI nuclear staining; middle column: anti-lamin B1 + B2 antibody, secondary biotinylated anti-mouse IgG and streptavidin-FITC conjugate; right column: merge. C, untreated control cells. Deconvolution microscopy, bar 20 μm .