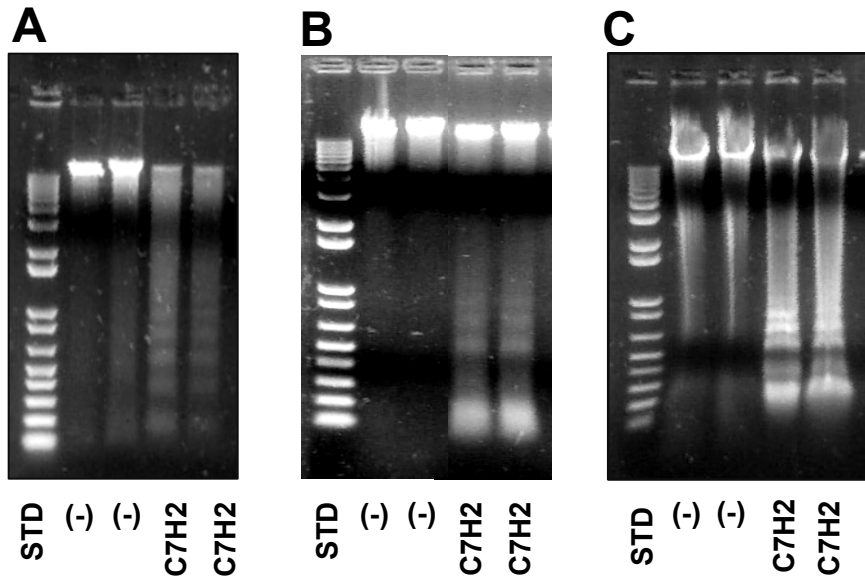


Figure S2



**FIGURE S2.** C7H2 peptide induces DNA degradation in tumor cells. DNA degradation in HeLa (A), U87-MG (B) and SKBR3 (C) cells, induced by C7H2 at 0.3 mM for 20 h; the experiments were run in duplicate. Controls (-) are shown and also the standard (STD) DNA ladder fragments.