

Figure S4

Actin-binding tumor-cell apoptotic C7H2 peptide

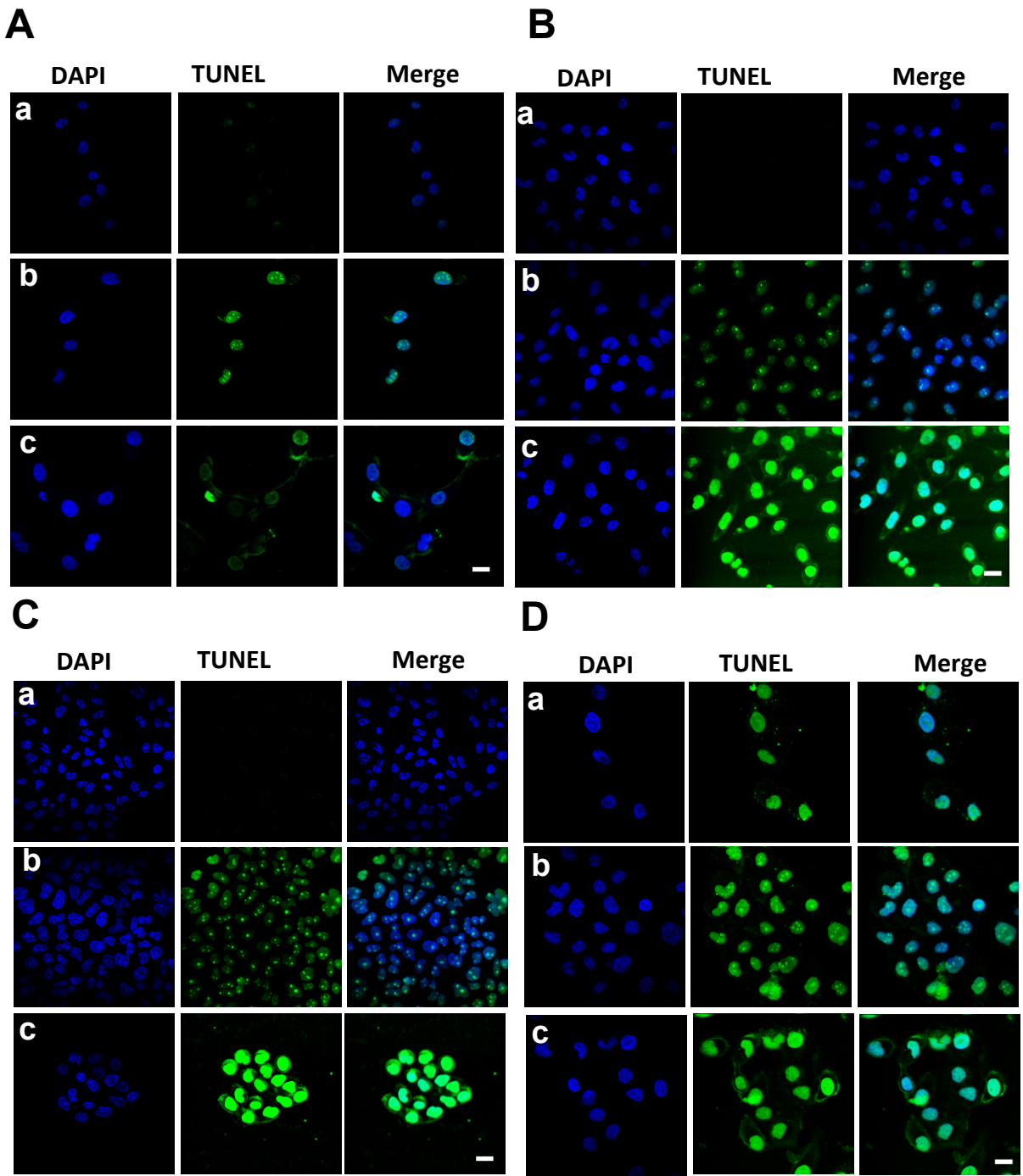


FIGURE S4. TUNEL assay in C7H2-treated tumor cells. TUNEL assay, showing untreated (a), positive control with 1 µg/ml actinomycin-treated (b), and 0.3 mM C7H2-treated (c), U87-MG (A), SKBR3 (B), HCT (C) and HeLa (D) cells for 2 h. Cells were analyzed by confocal microscopy. Bar, 20 µm.