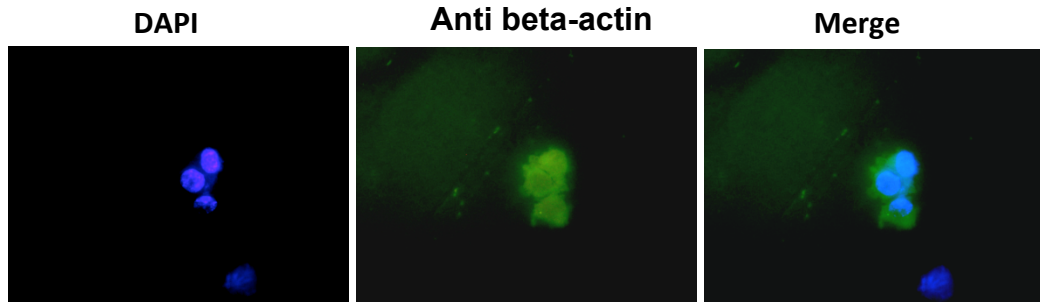


Figure S6

A



B

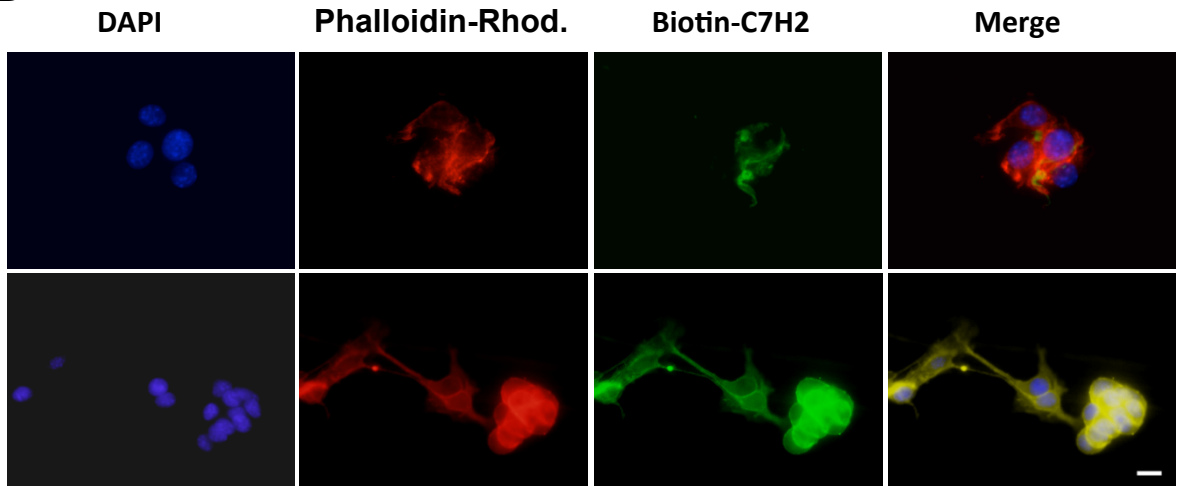


FIGURE S6. Surface expression of β -actin in murine melanoma cells. Reactivity with anti-actin antibody and C7H2. (A) Live B16F10-Nex2 tumor cells were stained with anti- β -actin antibody, secondary biotinylated anti-mouse IgG and streptavidin-FITC conjugate. Cells were also stained with DAPI and examined by fluorescence microscopy. (B) B16F10-Nex2 tumor cells were fixed with paraformaldehyde (a) or fixed with paraformaldehyde and permeabilized with Triton X-100 (b). Cells were treated with 0.15 mM biotinylated-C7H2 and stained with DAPI, phalloidin-rhodamine and streptavidin-FITC. Cells were examined by fluorescence microscopy. First column (left): DAPI nuclear staining; second column: phalloidin-rhodamine; third column: streptavidin-FITC and fourth column merge, suggesting colocalization. Bar, 20 μ m.