

Supplementary data

Figure 1. Unique LC-MS/MS spectra indentifying PC1/3

Representation of the three unique spectra indentifying PC1/3 with their ion fragmentation sequences.

Figure 2. TEM on peritoneal macrophages.

A. General aspect of WT and KO macrophages under control (PBS) or LPS (8h) condition. B. Mean area of cells. C. Mean number of vacuoles by cells.

Figure 3. Immunohistology of B-cells markers.

Parafilm embedded spleen from WT and KO mice were analyzed for B-cell markers (IgM, CD20, CD22) by immunohistology.

Figure 4 Immunohistology of T-cells markers.

Parafilm embedded spleen from WT and KO mice were analyzed for B-cell markers (CD3, CD4, CD7) by immunohistology.

Figure 5 Immunohistology of Natural Killer cells markers.

Parafilm embedded spleen from WT and KO mice were analysed for B-cell markers (CD56, CD57) by immunohistology.

Supplementary data
Fig. 1

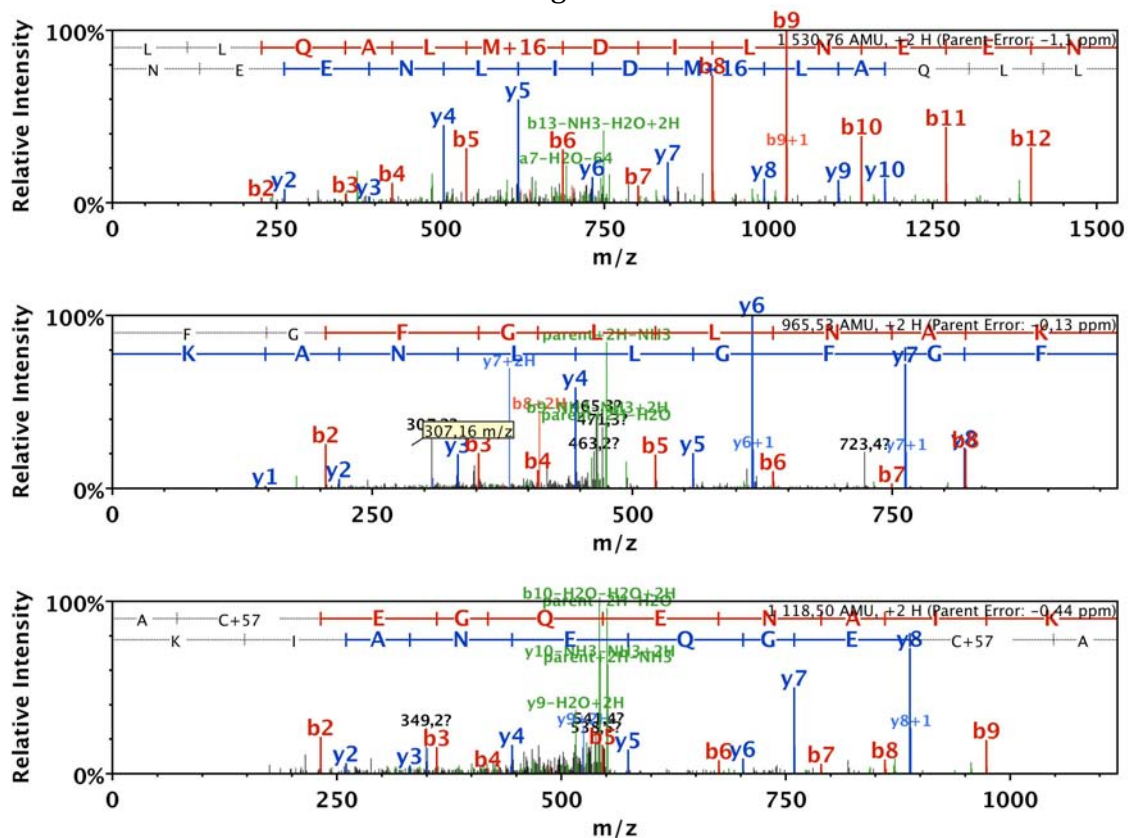
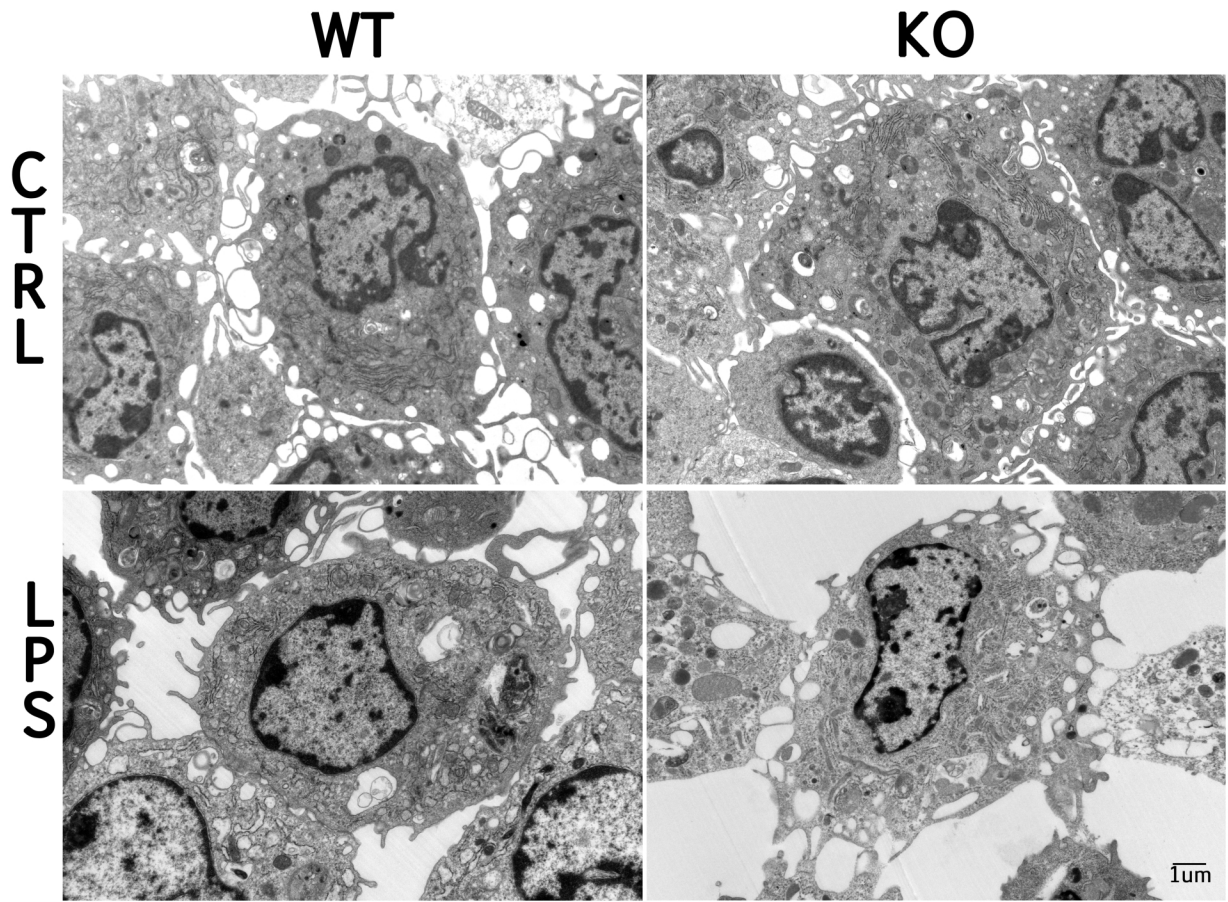
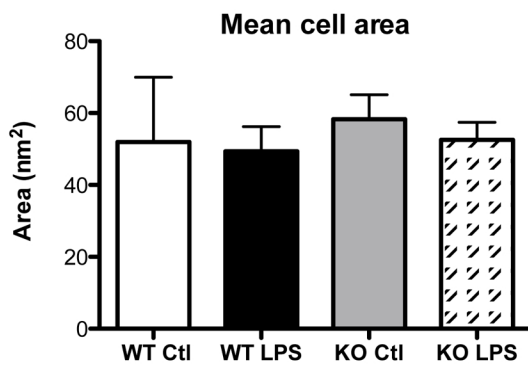


Fig.2

A



B



C

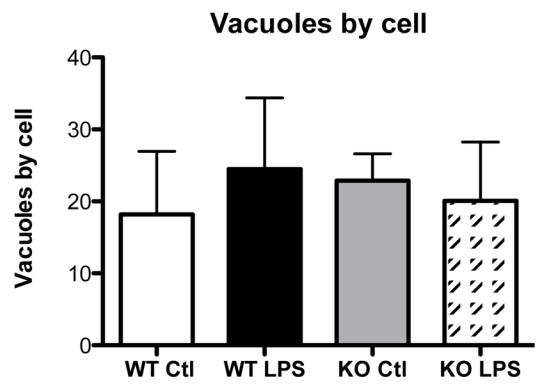


Fig. 3

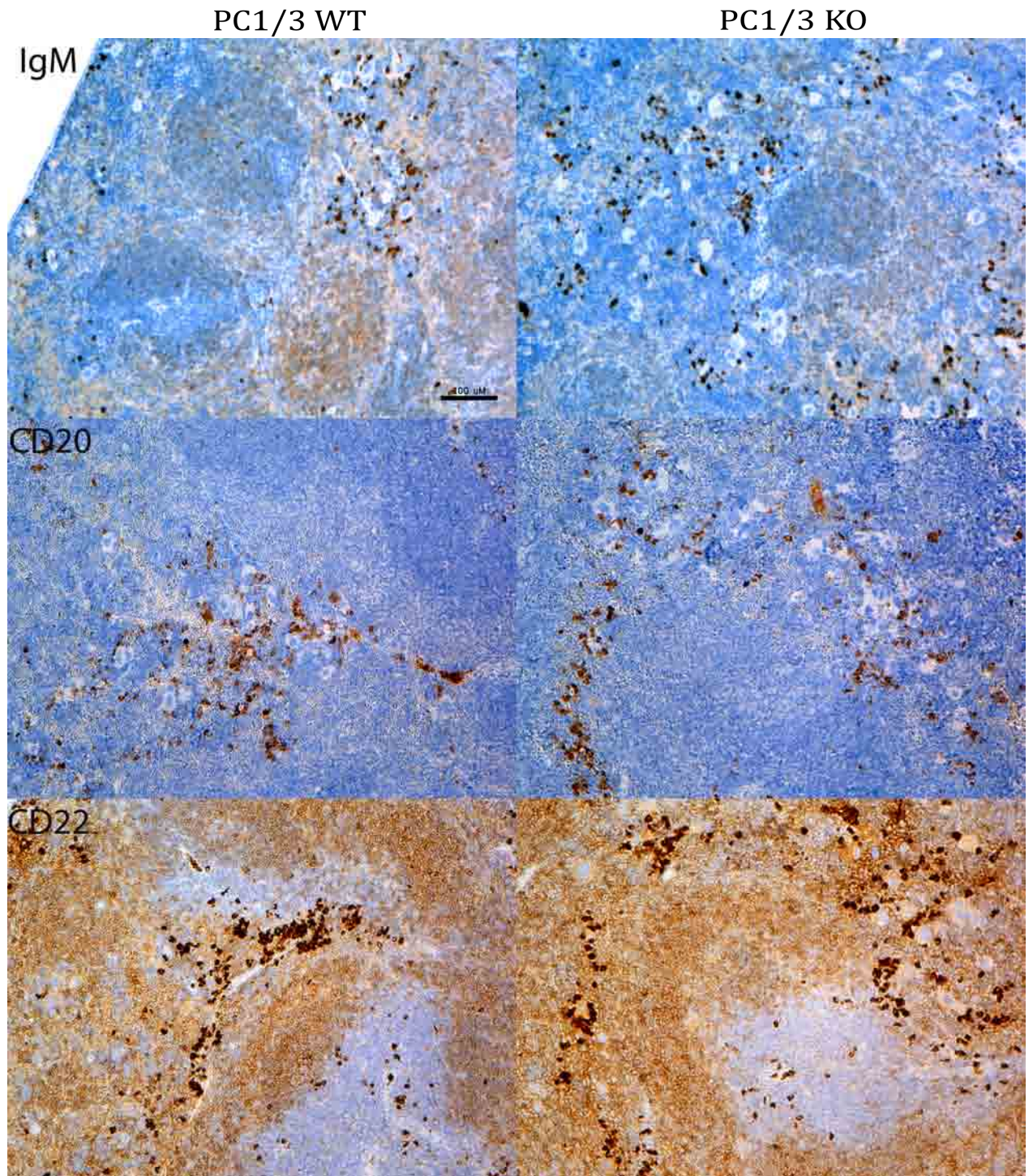


Fig. 4

PC1/3 WT

PC1/3 KO

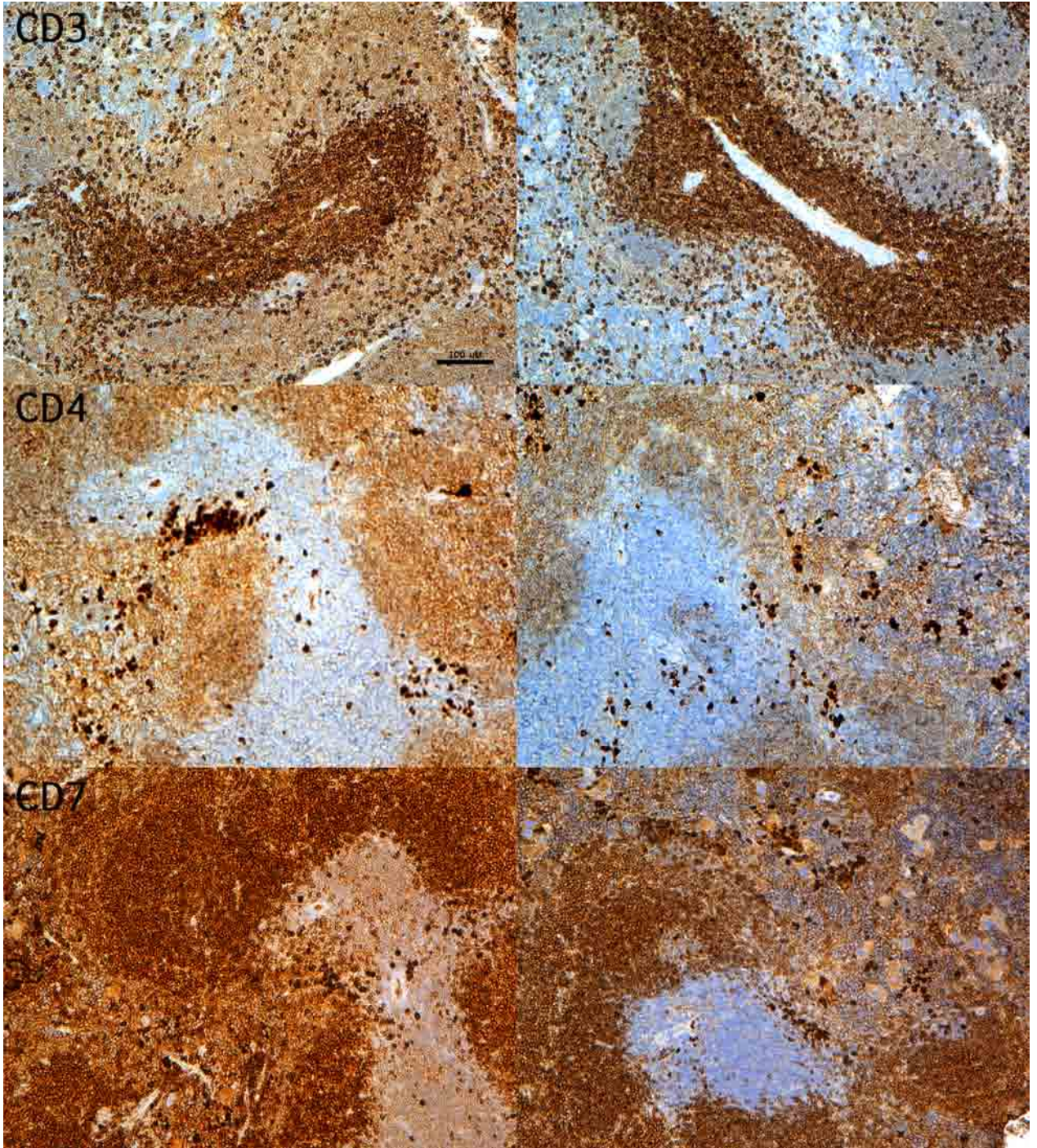


Fig. 5

