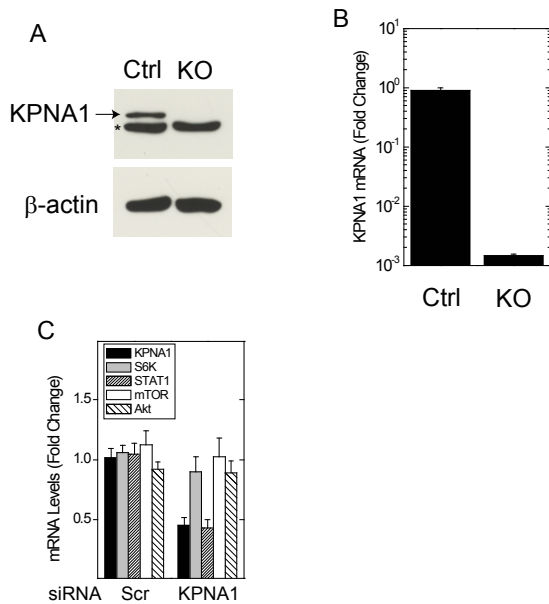


Supplementary Figure 1: Expression of KPNA1 in KPNA1-deficient cells:



Supplementary Figure 1: A. Proteins in whole cell lysates prepared from KPNA1  $-/-$  knockout (KO) or KPNA1  $+/-$  (Ctrl) cells were separated by SDS-PAGE, and KPNA1 was detected by Western blot analysis. The arrow indicates KPNA1, and the asterisk indicates a protein other than KPNA1 that is detected by the anti-KPNA1 antibody. RNA was prepared from B. KPNA1 control or knockout MEFs, or C. A549 cells transfected with scrambled control (Scr) or anti-KPNA1 siRNA, before real-time PCR detection of the indicated mRNAs. Data in B. and C. are means of fold change in mRNA levels (untransfected controls = 1) from biological triplicates  $\pm$  SEM as determined by the  $\Delta\Delta$ CT method, and are representative of 3 individual experiments.