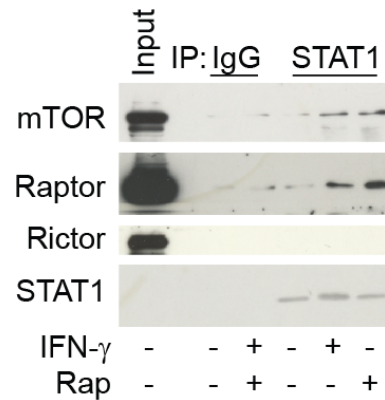


Supplementary Figure 2: STAT1 associates with raptor, but not rictor:



Supplementary Figure 2: HEK 293T cells were incubated with vehicle, rapamycin, 50 ng/ml, or IFN- $\gamma$ , 100 U/ml for 1 h, before preparation of whole cell lysates and immunoprecipitation with normal IgG or anti-STAT1 antibody. After separation by SDS-PAGE, the indicated immunoprecipitated proteins were detected by Western blot analysis. The gels shown are representative of 3 separate experiments.