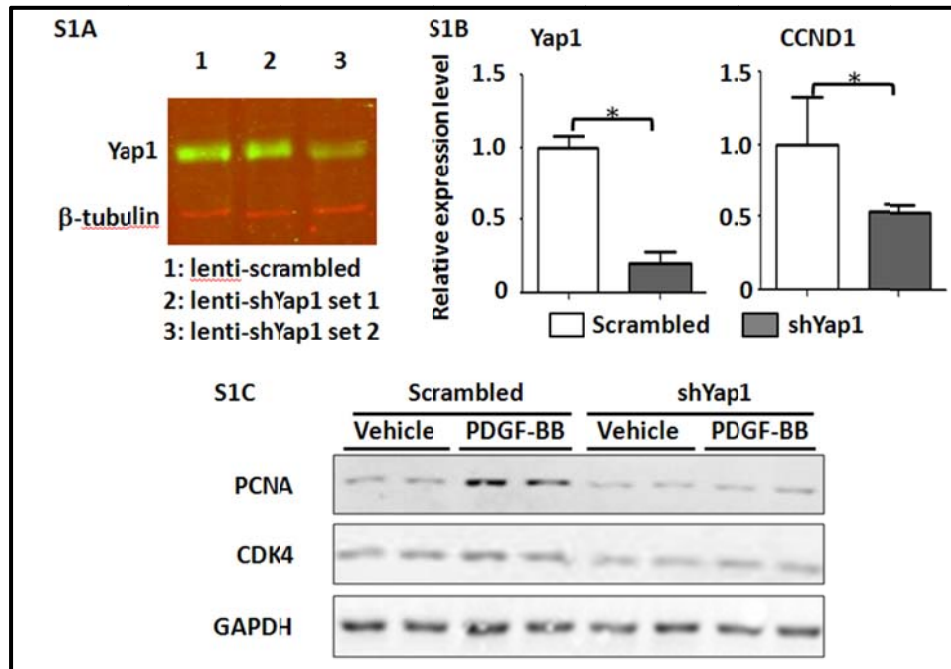


## Supplemental Figures and Legends



**Supplemental Figure S1. Knockdown of Yap1.** **S1A.** RASMCs were infected with two sets of lentiviruses carrying Yap1 shRNA targeting different Yap1 mRNA sequences, separately. The knockdown efficiency was confirmed by Western blotting for Yap1 (Green).  $\beta$ -tubulin served as internal control (Red). **S1B.** RASMCs after being infected with lentiviruses as described in the methods were harvested for qRT-PCR to detect gene expression as indicated. 18S served as internal control. Data is expressed as mean  $\pm$  SD. N=3. \*  $p < 0.05$ . **S1C.** Representative Western blot analysis of total protein lysates. Scrambled and shYap1 RASMCs after being subjected to serum starvation for 48hrs were treated with 10ng/ml PDGF-BB or vehicle respectively for 24hrs and harvested for Western blot analysis as indicated.

### Supplemental Table S1: Primers Used for qRT-PCR and ChIP assay

Gene	Primer Sequence	Sequence ID
18S RNA	forward: 5'-ggaagggcaccaccaggagt-3' reverse: 5'-tgcagccccggacatctaag-3'	NR_003278
MyoCD	forward: 5'-gggcccagcattttcaacat-3' reverse: 5'-tccccatttttctcccctttat-3'	NM_182667
SRF	forward: 5'-ccggaggagggtgtgattc-3' reverse: 5'-acacccccagagccacttagg-3'	NM_001109302
SMA	forward: 5'-accctcttcagccatctttca-3' reverse: 5'-gcgttctggaggagcaataatc-3'	NM_031004
SMMHC	forward: 5'-atgctgggaaggtggactacaa-3' reverse: 5'-tgtgcagggctgtggttga-3'	NM_001170600
Smoothelin B	forward: 5'-aaggccatgattgagaaacta-3' reverse: 5'-gcaccagggcacagaaag-3'	NM_001013049
SM22a	forward: 5'-cggcagatcatcagttagaaag-3' reverse: 5'-gggctgaggctgaggataggt-3'	NM_031549
Yap1	Forward:5'- tcggcaggcaatacgaata-3' Reverse:5'- catgctgaggccactgtctgt-3'	NM_001034002
CCND1	Forward:5'-attgcggctggctttacattag-3' Reverse:5'-gccttcatttgatctgggacat-3'	NM_171992
CCND2	Forward:5'-gtgcgggatgttgacctgt-3' Reverse:5'-aactatatggcctttcctctc-3'	NM_022267
SMA ChIP	Forward:5'-agcagaacagaggaatgcagtggaagagac-3' Reverse:5'- cctcccactcgctcccaacaaggagc-3'	
SMMHC ChIP	Forward:5'- ctgcgcgggaccatatttagtcagggggag-3' Reverse:5'- ctgggcgggagacaacccaaaaggccagg-3'	
<i>c-fos</i> ChIP	Forward:5'- cggttccccctgcgctgcaccctcagag-3' Reverse:5'- agaacaacagggaccggccgtggaacctg-3'	