

## Supplementary Material

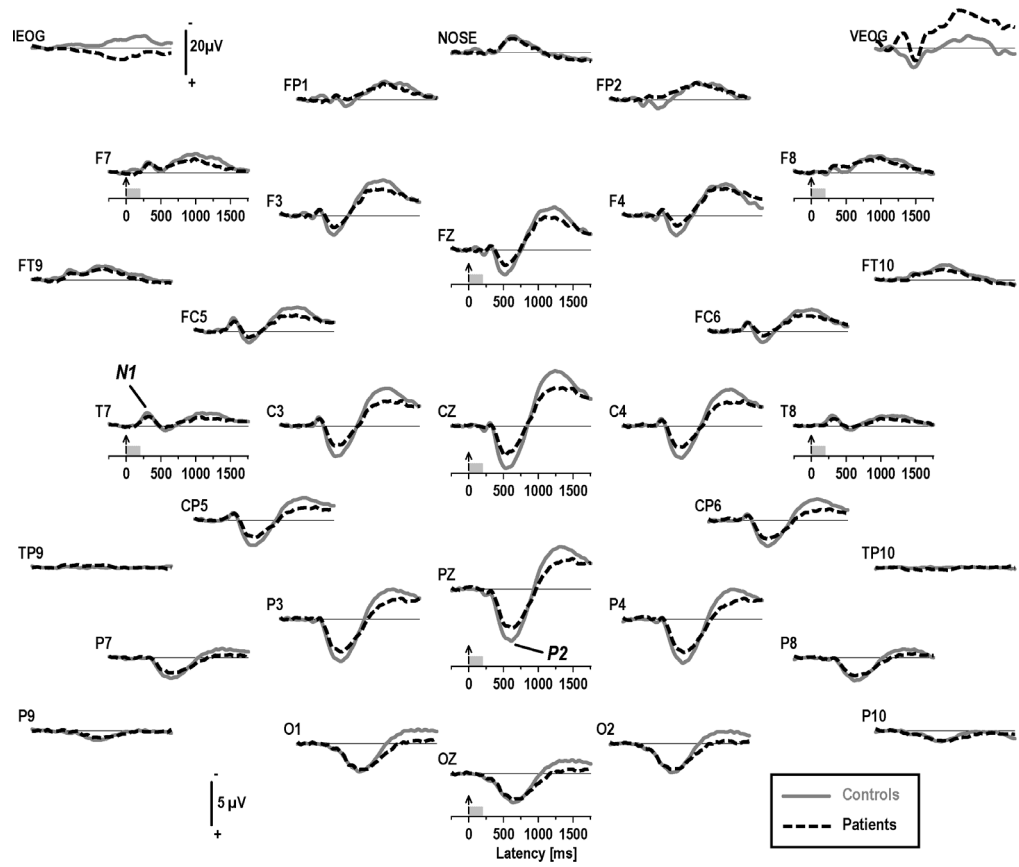
**Table A1.** Means ( $\pm$ SD) of N1 sink (factor 305)

		Sink activity at lateral centrotemporal sites (T7/8, C3/4, FC5/6, CP5/6)			
Odor Intensity		High		Low	
Hemisphere		Left	Right	Left	Right
Controls ( <i>n</i> = 35)	Male ( <i>n</i> = 18)	-0.95 $\pm$ 0.94	-0.99 $\pm$ 0.92	0.07 $\pm$ 0.48	0.17 $\pm$ 0.58
	Female ( <i>n</i> = 17)	-1.50 $\pm$ 1.84	-1.35 $\pm$ 1.26	-0.19 $\pm$ 0.85	-0.08 $\pm$ 0.70
Patients ( <i>n</i> = 32)	Male ( <i>n</i> = 18)	-0.91 $\pm$ 0.97	-0.98 $\pm$ 1.08	0.05 $\pm$ 0.57	0.15 $\pm$ 0.64
	Female ( <i>n</i> = 14)	-0.55 $\pm$ 0.97	-0.48 $\pm$ 0.94	-0.11 $\pm$ 0.80	0.07 $\pm$ 0.59
		Accompanying source activity at frontopolar sites (Fp1/2)			
Odor Intensity		High		Low	
Hemisphere		Left	Right	Left	Right
Controls ( <i>n</i> = 35)	Male ( <i>n</i> = 18)	0.97 $\pm$ 0.87	1.28 $\pm$ 1.05	-0.24 $\pm$ 0.70	0.09 $\pm$ 0.67
	Female ( <i>n</i> = 17)	1.03 $\pm$ 1.80	1.46 $\pm$ 1.23	-0.01 $\pm$ 1.48	0.18 $\pm$ 0.65
Patients ( <i>n</i> = 32)	Male ( <i>n</i> = 18)	0.33 $\pm$ 1.11	0.70 $\pm$ 0.74	0.01 $\pm$ 1.35	-0.05 $\pm$ 1.17
	Female ( <i>n</i> = 14)	0.36 $\pm$ 1.08	0.29 $\pm$ 0.85	-0.09 $\pm$ 1.13	0.35 $\pm$ 1.59

**Table A2.** Means ( $\pm$ SD) of P2 source (factor 630)

		Source activity at medial-lateral centroparietal sites (P3/4, P7/8, CP5/6, C3/4)			
Odor Intensity		High		Low	
	Hemisphere	Left	Right	Left	Right
Controls ( <i>n</i> = 35)	Male ( <i>n</i> = 18)	0.67 $\pm$ 0.81	0.73 $\pm$ 0.91	0.08 $\pm$ 0.63	0.13 $\pm$ 0.62
	Female ( <i>n</i> = 17)	0.94 $\pm$ 1.06	1.08 $\pm$ 0.95	0.38 $\pm$ 0.79	0.44 $\pm$ 0.71
Patients ( <i>n</i> = 32)	Male ( <i>n</i> = 18)	0.42 $\pm$ 0.83	0.42 $\pm$ 0.80	0.15 $\pm$ 0.62	0.25 $\pm$ 0.57
	Female ( <i>n</i> = 14)	0.42 $\pm$ 0.84	0.60 $\pm$ 0.88	0.19 $\pm$ 0.63	0.33 $\pm$ 0.68
		Accompanying sink activity at lateral frontotemporal sites (FT9/10, F7/8)			
Odor Intensity		High		Low	
	Hemisphere	Left	Right	Left	Right
Controls ( <i>n</i> = 35)	Male ( <i>n</i> = 18)	-0.62 $\pm$ 0.92	-0.69 $\pm$ 0.93	-0.25 $\pm$ 0.82	-0.36 $\pm$ 0.67
	Female ( <i>n</i> = 17)	-1.28 $\pm$ 0.85	-1.62 $\pm$ 0.89	-0.73 $\pm$ 0.66	-0.95 $\pm$ 0.67
Patients ( <i>n</i> = 32)	Male ( <i>n</i> = 18)	-0.48 $\pm$ 0.95	-0.70 $\pm$ 0.90	-0.24 $\pm$ 0.58	-0.41 $\pm$ 0.77
	Female ( <i>n</i> = 14)	-0.84 $\pm$ 1.07	-0.97 $\pm$ 0.94	-0.56 $\pm$ 0.68	-0.66 $\pm$ 0.90

**Figure A1.** Grand mean olfactory ERP [ $\mu\text{V}$ ] waveforms referenced to linked mastoids for 35 healthy adults and 32 schizophrenia patients at all 31 recording sites (averaged across intensity). Horizontal and vertical electrooculograms (EOG), which are shown at a smaller scale before blink correction, indicate no eye artifact concerns. Two prominent ERP components are labeled at sites T7 (N1) and Pz (P2).



**Figure A2.** Reference-free CSD [ $\mu\text{V}/\text{cm}^2$ ] waveforms for 35 healthy adults and 32 schizophrenia patients at all 31 recording sites (averaged across intensity). Two prominent CSD components are labeled at sites T7 (N1 sink) and Pz (P2 source).

