

Figure S1

Representative amplification and melt-curve profiles of Real-Time qPCR assays

Candidate reference genes for microRNA normalization

Candidate reference genes for mRNA normalization

Amplification plots

Melting Curves

Amplification plots

Melting Curves

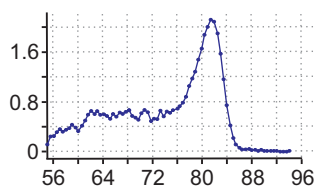
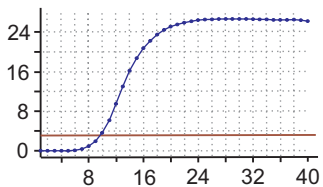
F (dR) x1000 vs. Cycle

F (-R'(T)) x1000 vs. T(°C)

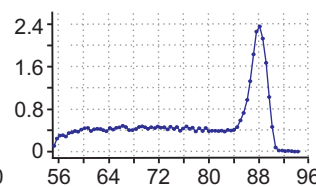
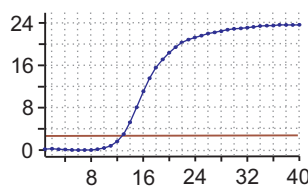
F (dR) x1000 vs. Cycle

F (-R'(T)) x1000 vs. T(°C)

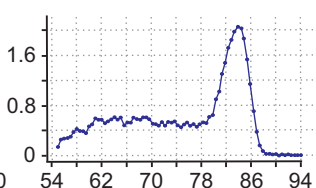
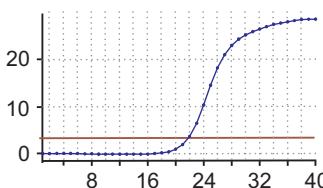
5S



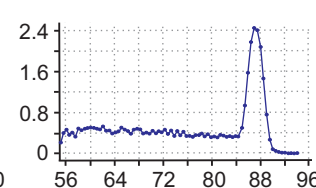
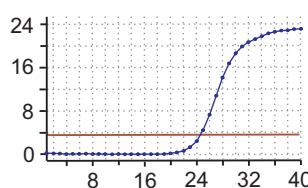
18S



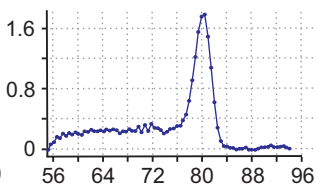
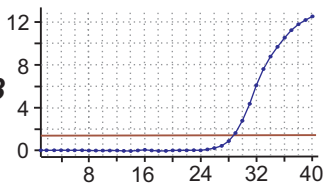
miR-16



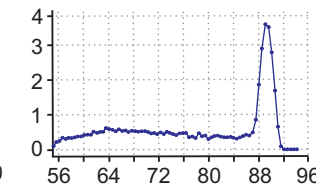
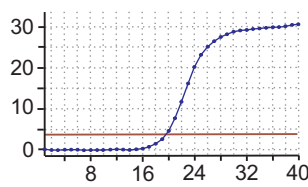
ACTB



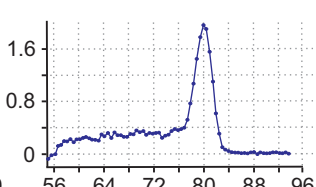
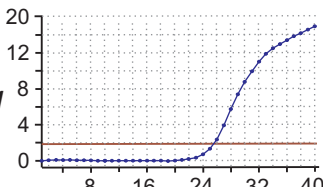
miR-103



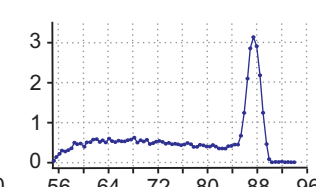
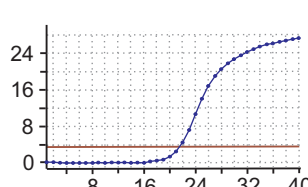
ALB



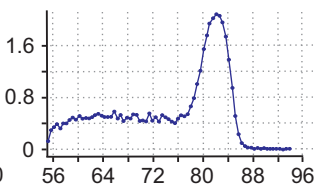
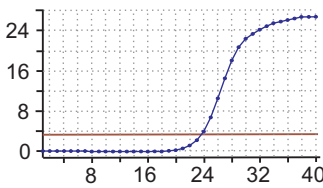
miR-191



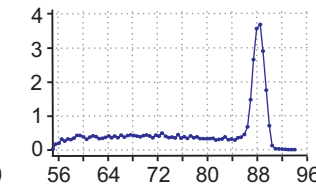
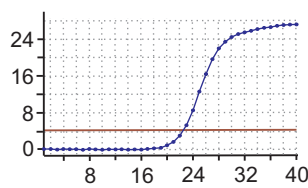
B2M



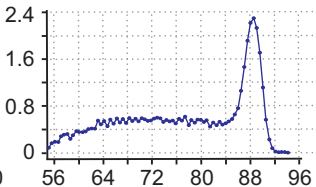
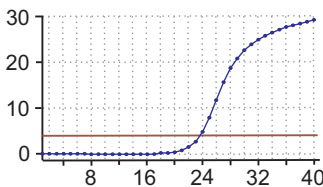
miR-Let7a



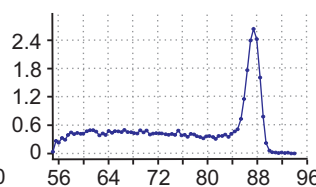
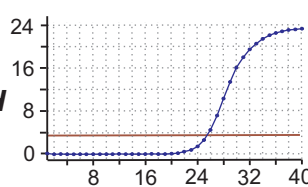
CYCA



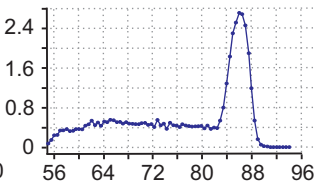
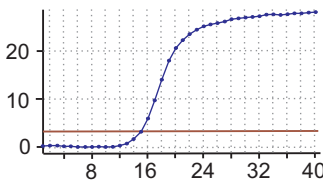
RNU48



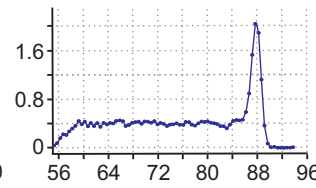
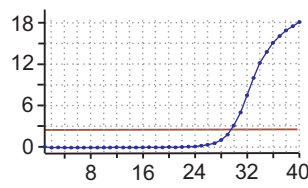
GAPDH



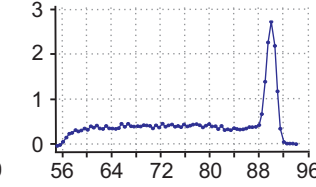
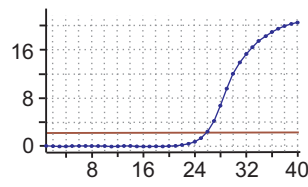
U6



HPRT1



SDHA

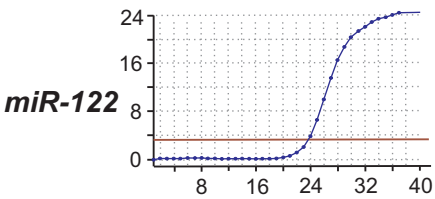


Representative amplification and melt-curve profiles of Real-Time qPCR assays

Genes of interest

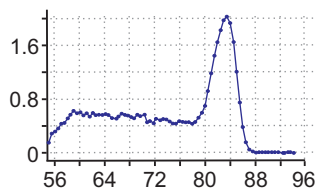
Amplification plots

F (dR) x1000 vs. Cycle



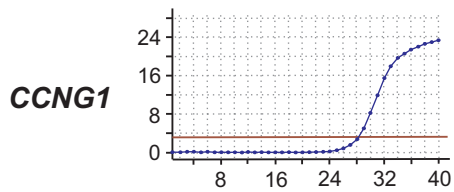
Melting Curves

F (-R'(T)) x1000 vs. T(°C)



Amplification plots

F (dR) x1000 vs. Cycle



Melting Curves

F (-R'(T)) x1000 vs. T(°C)

