

Figure S1. Yu et al.

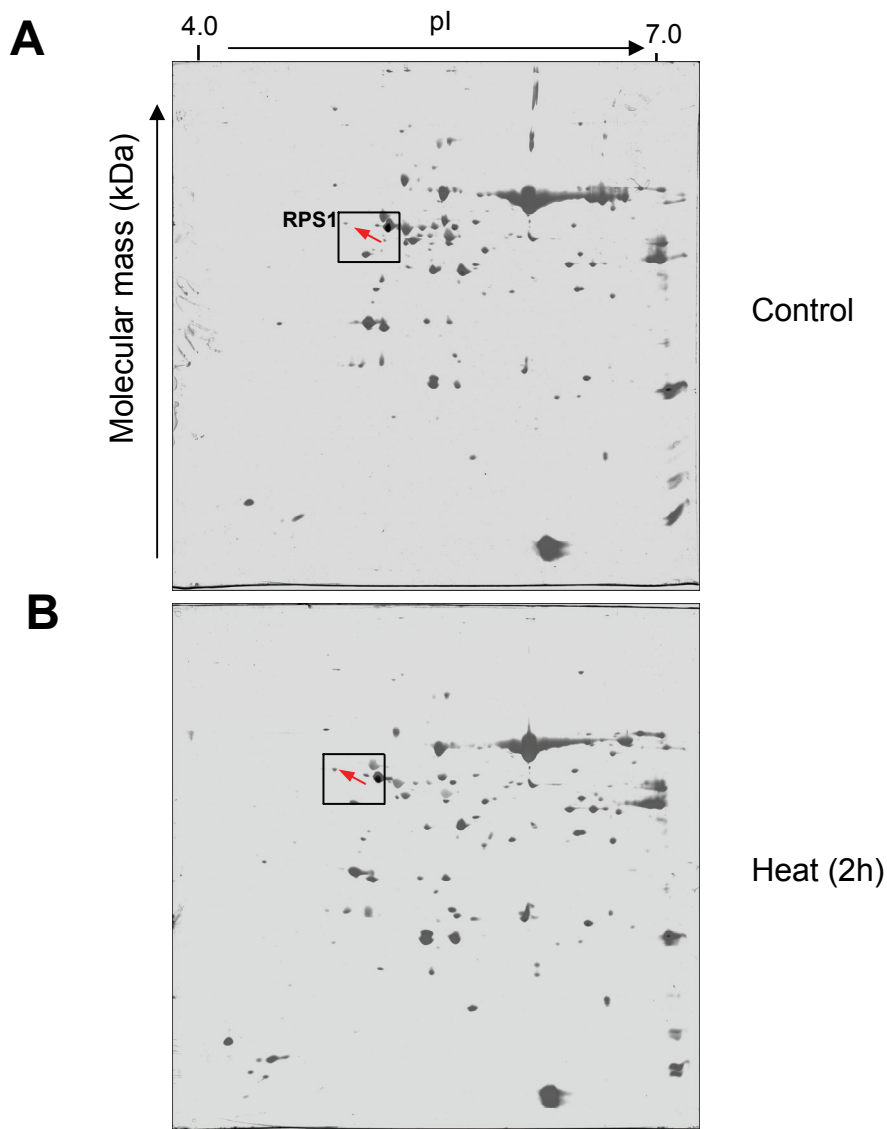


Figure S1. Silver stains of 2D-PAGE electrophoresis separation of proteins in response to heat treatment.

Proteins were extracted from control leaves (A) and the challenged leaves (B) at 38°C for 2 h in dark. The fully-expanded leaves were excised from 21-d-old wild type plants for control or heat treatment. Arrows indicate the RPS1 spot. Three independent experiments were performed and showed similar patterns.