

Figure S12. Yu et al.

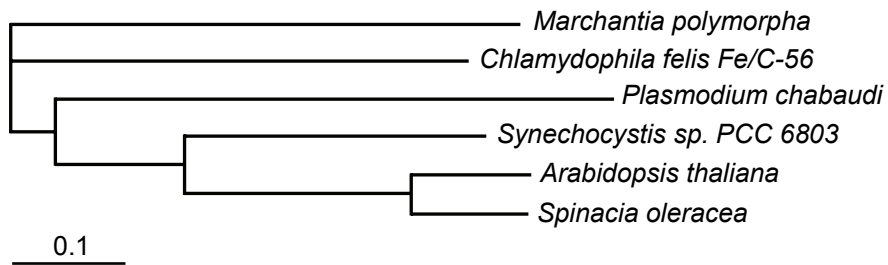


Figure S12. Phylogenetic relationships of RPS1s in *Arabidopsis thaliana* (At5g30510), *Spinacia oleracea* (accession number: M82923), *Synechocystis sp. PCC 6803* (accession number: gj|1652650), *Marchantia polymorpha* (accession number: gj|786212), *Chlamydomonas reinhardtii* (accession number: AJ585191) and *Plasmodium chabaudi* (accession number: gj|70945988).

A rooted phylogenetic tree was constructed using TreeView version 1.6.6 software with the neighbor-joining method based on ClustalW multiple alignments of the possible RPS1s. Bar = 0.1 amino acid substitutions per site.