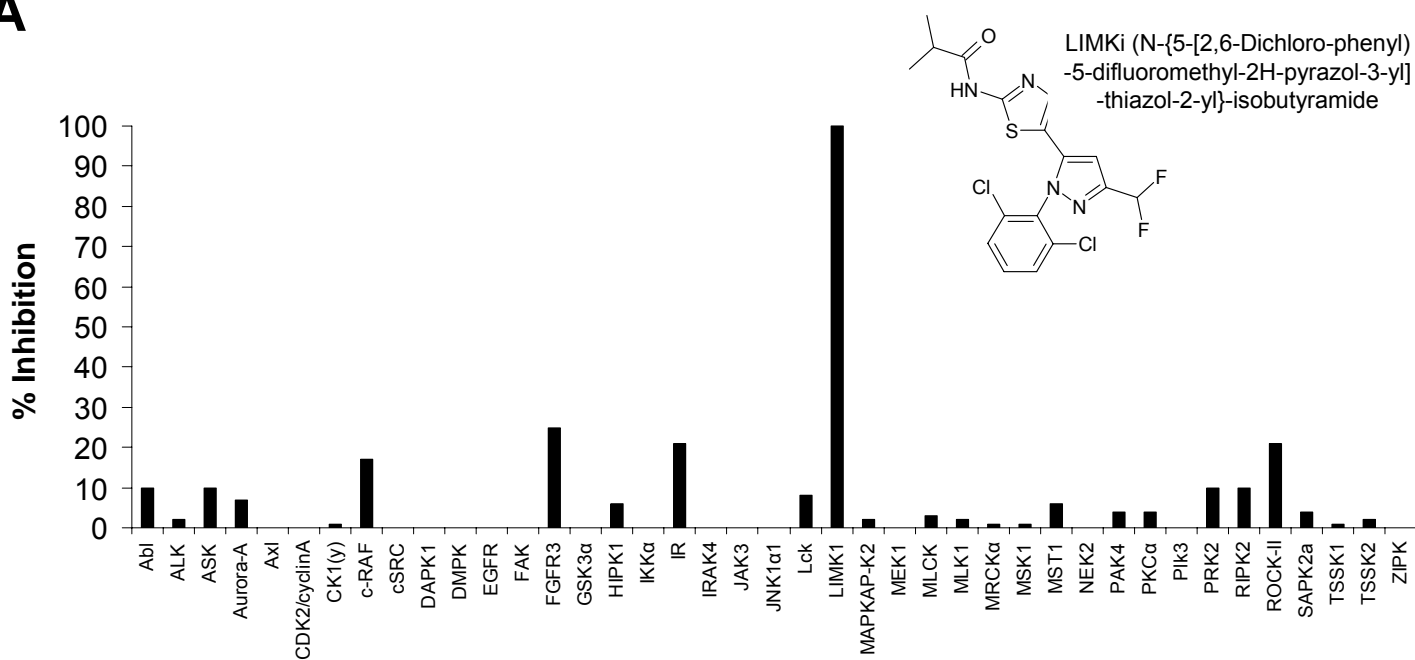


Fig. S1

A



B

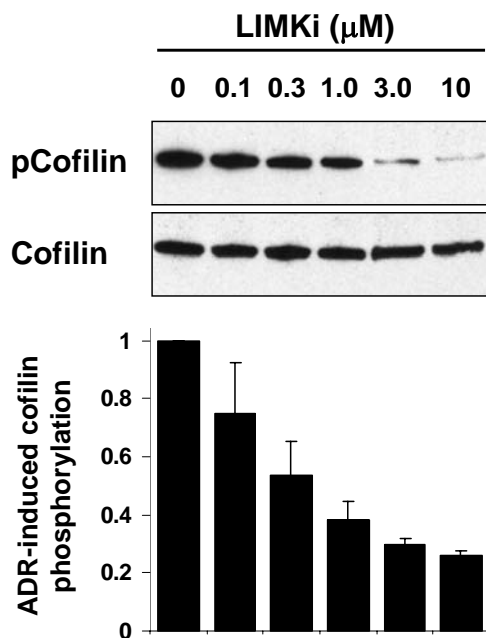


Figure S1 LIMK inhibition by a selective small-molecule inhibitor. **(A)** LIMK inhibitor (LIMKi) selectivity against a panel of human kinases. Percentage inhibition of *in vitro* kinase activity in the presence of 1 μ M LIMKi, assayed at the corresponding ATP K_m for each kinase determined by the Millipore kinase profiler service. **(B)** Dose-dependent inhibition of adriamycin-induced cofilin phosphorylation. Increasing concentrations of LIMKi produced corresponding inhibition of cofilin phosphorylation. Representative quantitative western blot showing lysates of MCF-7 cells treated with Adr (0.2 μ g/ml) in the presence of LIMKi at the concentrations indicated for 24 hours. Graph represents mean \pm SEM (n=3).